



Date: May 31, 2016

To: Patrick H. West, City Manager *T.M.*

From: *AJB*
Amy J. Bodek, Director of Development Services

For: Mayor and Members of the City Council

Subject: **Electric Vehicle Charge Ready Participation**

Please consider this memo a response to the City Council's May 3, 2016 request for an update on Southern California Edison's (SCE) Electric Vehicle (EV) Charge Ready Pilot Program. In January 2016, SCE approached the City with the opportunity to participate in the EV Charge Ready Pilot Program. The \$22 million pilot program aims to install as many as 1,500 EV charging stations within SCE's service area in publicly accessible locations, multi-unit residential buildings, and workplaces. At the completion of the pilot, SCE will seek authority from the California Public Utilities Commission to expand the program to approximately 30,000 charging stations for a total estimated cost of \$355 million.

The EV Charge Ready Program (Program) is designed to deploy the infrastructure needed to install charging stations at locations where vehicles are typically parked for four hours or more. The program covers all costs related to the new circuitry needed to install charging stations. After the participating location purchases the charging stations, additional support is provided by the Program to coordinate installation and monitor station use for 10 years. SCE aims to install at least 10 percent of charging stations in disadvantaged communities.

City staff believes the Program serves City efforts to expand its EV infrastructure and has begun efforts to participate in the initial pilot of the program. Extensive research has been conducted by the Office of Sustainability identifying several City-owned properties that would benefit from the installation of EV charging stations. By participating in the pilot, the City will be pursuing the opportunity to install at least 40 new EV charging stations over the course of two years, with four City-owned properties each potentially receiving at least 10 new stations. City staff is currently working on confirming the four locations. The installation of these additional EV charging stations will support the increasing usage of EV's by Long Beach residents and visitors.

If you would like any further information, please contact Larry Rich, Sustainability Coordinator, at (562) 570-5839 or via email at larry.rich@longbeach.gov.

AJB:LR
P:\Sustainability\Highlights & Communication\Memos & TFF\EV Charge Ready Participation v4.docx
ATTACHMENTS

CC: CHARLES PARKIN, CITY ATTORNEY
LAURA L. DOUD, CITY AUDITOR
TOM MODICA, ASSISTANT CITY MANAGER
ARTURO SANCHEZ, DEPUTY CITY MANAGER
REBECCA JIMENEZ, ASSISTANT TO THE CITY MANAGER
CRAIG BECK, DIRECTOR OF PUBLIC WORKS



SCE Launches Charge Ready Electric Vehicle Charging Pilot Program

Hundreds of stations to be added for area workers, customers, residents and students

May 16, 2016 11:00 AM Eastern Daylight Time

ROSEMEAD, Calif.—(BUSINESS WIRE)—Southern California Edison's Charge Ready program will bring representatives of local businesses and other organizations together on Wednesday in Irwindale to learn how they can take part in the pilot program that will add as many as 1,500 electric vehicle charging stations to SCE's service area.

The \$22-million Charge Ready pilot aims to get more electric vehicle charging stations installed at locations where cars are parked for extended periods — for example, at workplaces, apartment and condo complexes, fleet vehicle parking lots, campuses and recreational areas.

"We are excited to partner with employers, landlords, universities and other organizations to make it more convenient to charge electric vehicles in Southern California," said Caroline Choi, SCE's vice president for Energy and Environmental Policy. Under the Charge Ready program, participants, or site hosts, will own, operate and maintain electric vehicle charging stations, and SCE will install and maintain the supporting electrical infrastructure at no cost to participants.

As an additional incentive to participate, SCE will offer rebates to offset some or all of the cost of the charging stations and their installation, depending on the location and type of establishment. The program also calls for at least 10 percent of the charging stations to be installed in disadvantaged communities.

"What separates Charge Ready from other electric vehicle charging programs is that it encourages broad market participation, customer choice and technology innovation," Choi said. "Participants will have the ability to select equipment suppliers and charging services based on their site's needs."

Charge Ready will also help support state environmental improvement goals and make better use of the power grid, she said. Additionally, the program provides funding for education and outreach to develop awareness about the benefits of driving electric vehicles and charging from the power grid.

At the pilot's conclusion, SCE plans to seek authority from the California Public Utilities Commission to expand the program to about 30,000 charging stations.

The event will be held at 1:30 p.m. on Wednesday at SCE's Energy Education Center, 6090 North Irwindale Ave., Irwindale. Parking is available in the center's lot, which has eight EV chargers available for public use.

About Southern California Edison

An Edison International (NYSE:EIX) company, Southern California Edison is one of the nation's largest electric utilities, serving a population of nearly 14 million via 5 million customer accounts in a 50,000-square-mile service area within Central, Coastal and Southern California.

Contacts

Southern California Edison

Media Contact:

Paul Griffo, (626) 302-2255

Charge Ready Program Fact Sheet



We're revving up Charge Ready: Our program to help increase the availability of electric vehicle (EV) charging stations at certain locations where cars are typically parked for four hours or more. We'll be working with local government agencies, employers, multi-unit dwellings, and charging equipment manufacturers to roll out the program.

The program is designed to deploy the infrastructure needed to serve qualified charging stations at participating locations. You may also qualify for a rebate to cover some or all of the costs of procuring and installing charging stations that you will own, operate, and maintain.

Participation is subject to all program terms and conditions, including availability of funding and timely delivery of all required documents.

Program Eligibility

You are eligible to participate if you or your site:

1. Qualify as a non-residential customer (including bundled service, direct access, community aggregator, and community choice aggregator customers)
2. Meet the program's guidelines for existing and future EV adoption
3. Own, lease, or operate a site that provides long dwell-time parking (including workplaces, fleet, multi-unit dwellings, and other destination centers, such as sports venues or hotels)
4. Provide an easement granted to SCE by the property owner
5. Deliver proof of purchase of qualified charging equipment

Charging Station Deployment

Some of the key elements to deploying charging stations through Charge Ready include the following:

1. We will support the deployment of a **minimum of 10 charging stations** per site (five in disadvantaged communities¹). The actual number of charging stations approved through the program will be determined based on several criteria, including current and near-term EV adoption and the number of parking spaces available at your site.
2. You may select and procure charging stations among a **broad selection of Level 1 (120v) and Level 2 (240v) charging stations** (you may only choose qualified charging station models from approved vendors).
3. All charging stations must be installed on a **new dedicated circuit** deployed by us (with its own panel, meter, and service), separately from any existing panel, meter or service.
4. The program covers **all electric infrastructure costs** related to the new circuit.
5. We also offer a **rebate** to offset some or all of the costs for the charging stations and their installation; however, a limited number of sites with significant deployment costs, based on our estimates, may not be eligible to participate in the program.
6. All permits and inspections are obtained by SCE or Charge Ready vendors.

¹A disadvantaged community is an area identified by the [California Environmental Protection Agency](#) based on geographic, socioeconomic, public health, and environmental criteria in accordance to the Health and Safety Code § 39711.

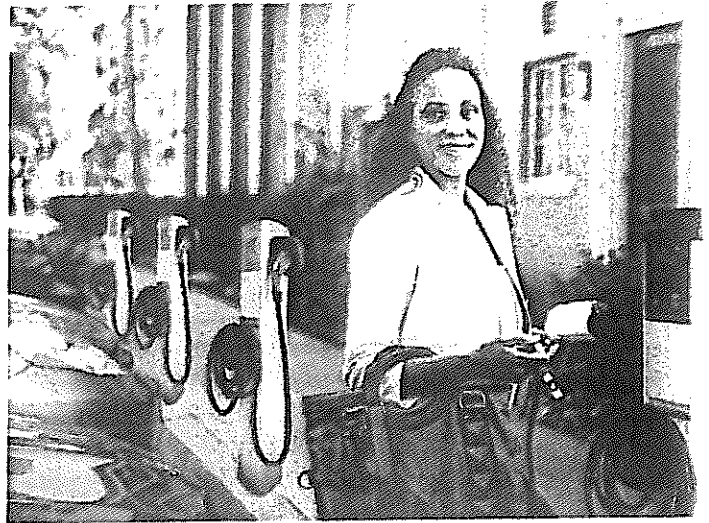
Charge Ready Program Fact Sheet

Key Players

You: Upon enrollment in the Charge Ready Program, you are responsible for procuring qualified charging stations through approved vendors within 30 days. Participation in the program is required for 10 years, and charging stations must be maintained in working order during that period. You must also subscribe to a data management plan with an approved EV charging network service provider and share non-personally identifiable information (PII) charging data at a transactional level with us². Finally, you must participate in future Demand Response (DR) programs².

SCE: We provide a turnkey approach to deploying your EV charging installation with a focus on reducing costs and complexity. To do so, we install and maintain the complete electric infrastructure serving charging stations at participating locations at no cost to you. We also qualify vendors and charging station models based on several key technical requirements, and we coordinate installation with the vendor(s) you select to complete deployment. Finally, we provide a rebate to offset some or all of the costs for the charging stations and their installations. Operating costs, including equipment repairs and maintenance, EV charging network subscription, and electricity costs will be your responsibility.

Charge Ready Approved Vendor: Approved third-party vendors supply, deliver, and install charging stations at the participating site. Vendors also provide technical support, as well as communication services, including data management and DR services. Some approved vendors also provide repair and maintenance services.



Visit [on.sce.com/chargeready](https://www.sce.com/chargeready) to enroll.

²This requirement does not apply to Level 1 charging stations