



City of Long Beach

Working Together to Serve

Memorandum

Date: August 15, 2017

To: Patrick H. West, City Manager *PHW*

From: Jess L. Romo, Director, Long Beach Airport *JLR*

For: Mayor and Members of the City Council

Subject: **Long Beach Airport Monthly Noise Report – June 2017**

Attached is the Long Beach Airport Monthly Noise Report for June 2017. If you have any questions or require additional information, please contact Airport Director Jess L. Romo at (562) 570-2605.

ATTACHMENT

CC: CHARLES PARKIN, CITY ATTORNEY
LAURA L. DOUD, CITY AUDITOR
DOUGLAS HAUBERT, CITY PROSECUTOR
TOM MODICA, ASSISTANT CITY MANAGER
KEVIN J. JACKSON, DEPUTY CITY MANAGER
REBECCA JIMENEZ, ASSISTANT TO THE CITY MANAGER

Airport Advisory Commission

Wayne Chaney Sr.
Chair

Jeffrey Anderson
Vice Chair

Alvaro Castillo

Hal Gosling

Phil Ramsdale

Jeff Rowe

Roland B. Scott, Jr.

Karen Sherman

Airport Management

Jess L. Romo, A.A.E.
Airport Director

Juan López-Rios
Deputy Airport Director

Ken Mason
Executive Assistant

Claudia Lewis
Manager of Administration
& Finance

Fred Pena
Airport Operations Manager

Ambi Thurai
Engineering Officer

Dale Worsham
Administrative Officer

Karl Zittel
Airside Operations Officer

Stephanie Montuya-Morisky
Public Affairs Officer

Ron Reeves
Noise & Environmental Affairs
Officer



Long Beach Airport Monthly Noise Report June 2017

COMMERCIAL AIRCRAFT LATE NIGHT ACTIVITY
LGB Current Month & Calendar Year-To-Date Statistics (10 PM- 7AM)
June 2017

#	June			CY-T-D 2017		
	2017	2016	Change	2017	2016	Change
10PM - 11PM Activity						
Air Carrier & Commuter Operations	2,911	2,339	24.5%	17,716	11,977	47.9%
American/Mesa Airlines	0	2	200.0%	7	7	0.0%
Delta/SkyWest Airlines	1	0	100.0%	14	16	-12.5%
FedEx	0	0		0	0	
JetBlue Airways	48	13	269.2%	228	130	75.4%
Southwest Airlines	4	1	300.0%	14	1	1,300%
UPS	0	0		0	0	
Subtotal 10PM-11PM	53	16	231.3%	263	154	70.8%
11PM- 7AM Activity						
American/Mesa Airlines	0	2	-200.0%	8	17	-52.9%
Delta/SkyWest Airlines	0	1	-100.0%	5	3	66.7%
FedEx	0	0		0	0	
JetBlue Airways	31	7	342.9%	125	64	95.3%
Southwest Airlines	0	0		5	0	500.0%
UPS	0	0		0	0	
Subtotal 11PM-7AM	31	10	210.0%	143	84	70.2%
TOTAL	84	26	223.1%	406	238	70.6%

Notes:

2.9% (84 of 2,911) of total commercial operations occurred between 10pm - 7am.

2.8 flights - Nightly average for all late night (10:00 PM—7:00 AM) commercial flights, includes unanticipated delays.

1.0 flights - Nightly average for commercial flights after 11 PM.

Of the 84 Late-Night Operations, 45% were due to mechanical issues, 23% were due to poor-weather conditions, 13% were due to air traffic control-related issues, 10% occurred during the 5-minute grace period, 4% were due to crew-related issues, 2% were due to medical issues, 2% were due to unknown reasons and 1% were due to late arriving customers from a connecting flight.

AIRPORT OPERATIONS & AIRCRAFT NOISE VIOLATIONS

LGB Current Month & Calendar Year-To-Date Statistics

June 2017

June				CY-T-D 2017		
Air Carrier Noise Violations	2017	2016	Change	2017	2016	Change
American/Mesa Airlines	0	1	-100.0%	2	2	0.0%
Delta/SkyWest Airlines	0	1	-100.0%	3	4	-25.0%
FedEx	0	0		0	0	
JetBlue Airways	31	5	520.0%	125	69	81.2%
Southwest Airlines	0	0		2	0	200.0%
UPS	0	0	-100.0%	0	1	-100.0%
Subtotal	31	7	342.9%	132	76	73.7%
Commuter Noise Violations	2017	2016	Change	2017	2016	Change
American/Mesa Airlines	0	0		0	0	
Delta/SkyWest Airlines	0	0		0	1	-100.0%
Subtotal	0	0		0	1	-100.0%
Non-Commercial Noise Violations	2017	2016	Change	2017	2016	Change
All GA, Charter & Other	16	17	-5.9%	93	94	-1.1%
TOTAL	47	24	95.8%	225	171	31.6%
Monetary Fines						
Airport Surcharges	\$1,800	\$1,300		\$13,000	\$9,600	
Consent Decree	\$168,000	\$30,000		\$636,000	\$312,000	
TOTAL	\$169,800	\$31,300		\$649,000	\$321,600	
Airport Operations (FAA)	2017	2016	Change	2017	2016	Change
Air Carrier + Commuter Carriers	2,911	2,339	24.5%	17,716	11,977	47.9%
Air Taxi + General Aviation	22,875	22,810	0.3%	135,329	140,512	-3.7%
Military Operations	123	88	39.8%	745	780	-4.5%
Total Aircraft Operations	25,909	25,237	2.7%	153,790	153,269	0.3%

Notes:

0.2% (47 of 25,909) of the Airport's total aircraft operations (Commercial & GA) resulted in an aircraft noise violation.

1.1% (31 of 2,911) the Airports Commercial operations (Commercial & Commuter) resulted in an aircraft noise violation.

AIRCRAFT NOISE VIOLATORS

June 2017

OWNERNAME	DATE	TIME	A/D	RWY	A/C TYPE	SEL	LIMIT	STATUS
NetJets Inc.	6/1/2017	6:28:07	A	30	C56X	93	90.0	VIO
JetBlue Airways Corporation	6/1/2017	22:12:51	A	30	A320	94	90.0	VIO
Private	6/2/2017	0:53:55	D	30	PA44	83	79.0	VIO
K & B Aviation GP LLC	6/2/2017	5:01:52	A	30	C56X	88	79.0	VIO
JetBlue Airways Corporation	6/3/2017	0:04:19	A	30	A320	93	79.0	VIO + Alt Enf
JetBlue Airways Corporation	6/6/2017	0:38:25	A	30	A320	94	79.0	VIO + Alt Enf
JetBlue Airways Corporation	6/7/2017	0:45:35	D	30	A320	89	79.0	VIO + Alt Enf
JetBlue Airways Corporation	6/7/2017	5:24:16	A	30	A320	94	79.0	VIO + Alt Enf
JetBlue Airways Corporation	6/7/2017	23:07:48	A	30	A320	94	79.0	VIO + Alt Enf
JetBlue Airways Corporation	6/7/2017	23:52:16	A	30	A320	94	79.0	VIO + Alt Enf
JetBlue Airways Corporation	6/8/2017	23:23:52	A	30	A320	94	79.0	VIO + Alt Enf
JetBlue Airways Corporation	6/8/2017	23:38:50	A	30	A320	94	79.0	VIO + Alt Enf
RDH Air LLC	6/10/2017	23:51:42	D	30	LJ45	90	79.0	VIO
JetBlue Airways Corporation	6/11/2017	23:20:51	D	30	A320	95	79.0	VIO + Alt Enf
JetBlue Airways Corporation	6/11/2017	23:26:56	A	30	A320	94	79.0	VIO + Alt Enf
JetBlue Airways Corporation	6/11/2017	23:50:48	A	30	A320	92	79.0	VIO + Alt Enf
JetBlue Airways Corporation	6/12/2017	22:10:48	A	30	A320	94	90.0	VIO
JetBlue Airways Corporation	6/13/2017	23:15:31	A	30	A320	94	79.0	VIO + Alt Enf
MCS Leasing Inc	6/15/2017	23:28:52	D	30	CL60	85	79.0	VIO
NetJets Inc.	6/16/2017	0:15:14	A	30	E55P	89	79.0	VIO
Colonial Management Company Inc	6/16/2017	10:14:40	D	25R	BE55	95	92.0	VIO
NBJTT LLC	6/16/2017	23:13:13	A	30	CL60	89	79.0	VIO
JetBlue Airways Corporation	6/16/2017	23:15:04	A	30	A320	93	79.0	VIO + Alt Enf
Private	6/16/2017	23:24:08	D	30	P28A	85	79.0	VIO
JetBlue Airways Corporation	6/16/2017	23:41:28	A	30	A320	94	79.0	VIO + Alt Enf
Private	6/18/2017	5:50:50	D	30	BE35	86	79.0	VIO
JetBlue Airways Corporation	6/18/2017	23:39:40	A	30	A320	94	79.0	VIO + Alt Enf
McColee Partners LLC	6/18/2017	23:43:16	D	30	G150	88	79.0	VIO
JetBlue Airways Corporation	6/18/2017	23:49:02	A	30	A320	93	79.0	VIO + Alt Enf

AIRCRAFT NOISE VIOLATORS

June 2017

OWNERNAME	DATE	TIME	A/D	RWY	A/C TYPE	SEL	LIMIT	STATUS
JetBlue Airways Corporation	6/19/2017	23:21:17	D	30	A320	89	79.0	VIO + Alt Enf
JetBlue Airways Corporation	6/20/2017	1:21:10	A	30	A320	94	79.0	VIO + Alt Enf
JetBlue Airways Corporation	6/20/2017	2:15:30	A	30	A320	94	79.0	VIO + Alt Enf
JetBlue Airways Corporation	6/20/2017	22:40:12	A	30	A320	95	90.0	VIO
JetBlue Airways Corporation	6/20/2017	23:09:44	D	30	A320	89	79.0	VIO + Alt Enf
Altitude Aviation LLC	6/21/2017	11:23:17	A	25R	SR22	92	88.0	VIO
JetBlue Airways Corporation	6/23/2017	1:21:33	A	30	A320	94	79.0	VIO + Alt Enf
Meruelo Group LLC	6/24/2017	0:17:13	A	30	GLF5	89	79.0	VIO
JetBlue Airways Corporation	6/24/2017	0:23:00	A	30	A320	95	79.0	VIO + Alt Enf
JetBlue Airways Corporation	6/24/2017	0:41:02	A	30	A320	94	79.0	VIO + Alt Enf
Metro-Jet LLC	6/24/2017	0:47:48	A	30	SW3	85	79.0	VIO
JetBlue Airways Corporation	6/25/2017	23:06:40	D	30	A320	95	79.0	VIO + Alt Enf
JetBlue Airways Corporation	6/25/2017	23:09:00	A	30	A320	94	79.0	VIO + Alt Enf
JetBlue Airways Corporation	6/26/2017	0:39:10	A	30	A320	94	79.0	VIO + Alt Enf
Catalina Flying Boats	6/26/2017	6:44:51	A	30	C208	94	90.0	VIO
JetBlue Airways Corporation	6/26/2017	23:46:29	D	30	A320	88	79.0	VIO + Alt Enf
C400LS LLC	6/29/2017	23:23:37	A	30	B350	92	79.0	VIO
JetBlue Airways Corporation	6/30/2017	23:16:50	D	30	A320	90	79.0	VIO + Alt Enf

DEFINITIONS:

A/C Type — Aircraft Type

A/D/G — Arrival / Departure / Ground Operation

ALT ENF — Alternative Enforcement

RWY — Runway

SEL — SENEL — Single Event Noise Exposure Level (dBA)

VIO — Violation

AIR CARRIER NOISE BUDGET PERFORMANCE

July 2016 - June 2017

RMT #	NOISE BUDGET	ACTUAL	PERCENT BUDGET USED
9	70.7	58.7	83%
10	84.6	73.8	87%

DEFINITIONS:

RMT — Remote Monitoring Terminal

TOTAL NOISE BUDGET PERFORMANCE

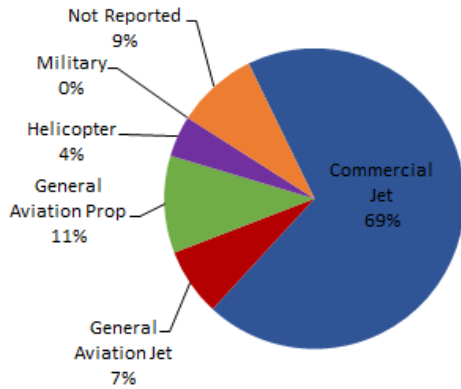
July 2016 - June 2017

RMT #	NOISE BUDGET	ACTUAL	PERCENT BUDGET USED
9	102.7	68.3	67%
10	120.9	87.4	72%

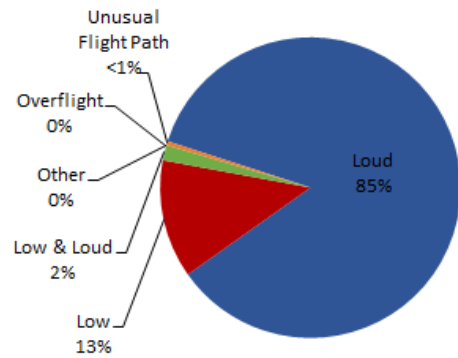
LGB AIRCRAFT NOISE COMPLAINTS

June 2017

Complaints by Aircraft Types



Complaints by Concern



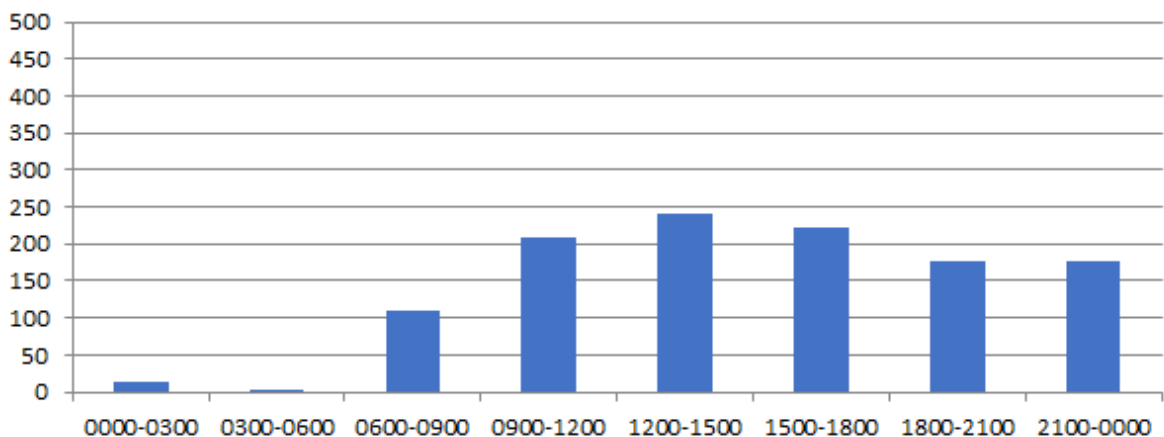
Complaints by Zip Code ¹		
Zip Code	Complaints	Units
90266	1	1
90277	2	2
90712	1	1
90713	1	1
90803	1	1
90804	2	1
90807	44	15
90808	8	7
90815	16	4
92612	89	1
92626	575	4
92648	206	6
92649	202	4
Not Reported	7	4
Grand Total	1,155	52

Long Beach Residents' Helicopter Complaints Submitted to FAA ²				
Zip Code	Individual Complaints	Number of Individuals	Anonymous Complaints	Total Complaints
90802	8	3	4	12
90803	135	13	70	205
90804	5	1	1	6
90807	0	n/a	22	22
90808	0	n/a	32	32
90813	0	n/a	2	2
90814	119	11	68	187
Grand Total	267	28	199	466

¹ These data include data submitted directly to Long Beach Airport and does not include data submitted to FAA.

² These data reflect helicopter noise complaints submitted directly to FAA.

Complaints by Time





long beach airport



Long Beach Airport

4100 E. Donald Douglas Drive, Long Beach, CA 90808

www.lgb.org • lgbapt@longbeach.gov

Administration • (562) 570-2619