



City of Long Beach

Working Together to Serve

Memorandum

Date: February 12, 2018

To: Patrick H. West, City Manager *PLW*

From: Jess L. Romo, Director, Long Beach Airport *JLR*

For: Mayor and Members of the City Council

Subject: Long Beach Airport Monthly Noise Report – December 2017

Attached is the Long Beach Airport Monthly Noise Report for December 2017. If you have any questions or require additional information, please contact Airport Director Jess L. Romo at (562) 570-2605.

ATTACHMENT

CC: CHARLES PARKIN, CITY ATTORNEY
LAURA L. DOUD, CITY AUDITOR
DOUGLAS HAUBERT, CITY PROSECUTOR
TOM MODICA, ASSISTANT CITY MANAGER
KEVIN J. JACKSON, DEPUTY CITY MANAGER
REBECCA GARNER, ASSISTANT TO THE CITY MANAGER

Airport Advisory Commission

Wayne Chaney Sr.
Chair

Jeffrey Anderson
Vice Chair

Alvaro Castillo

Hal Gosling

Phil Ramsdale

Jeff Rowe

Roland B. Scott, Jr.

Karen Sherman

Airport Management

Jess L. Romo, A.A.E.
Airport Director

Juan López-Rios
Deputy Airport Director

Ken Mason
Executive Assistant

Claudia Lewis
Manager of Administration
& Finance

Fred Pena
Airport Operations Manager

Ambi Thurai
Engineering Officer

Dale Worsham
Administrative Officer

Karl Zittel
Airside Operations Officer

Stephanie Montuya-Morisky
Public Affairs Officer

Steve Spurlock
Superintendent of Safety and
Security

Ron Reeves
Noise & Environmental Affairs
Officer



long beach
airport



Long Beach Airport Monthly Noise Report December 2017

COMMERCIAL AIRCRAFT LATE NIGHT ACTIVITY
LGB Current Month & Calendar Year-To-Date Statistics (10 PM- 7AM)
December 2017

| | December | | | CY-T-D 2017 | | |
|--|--------------|--------------|---------------|---------------|---------------|---------------|
| 10PM - 11PM Activity | 2017 | 2016 | Change | 2017 | 2016 | Change |
| Air Carrier & Commuter Operations | 3,123 | 2,659 | 17.5% | 36,013 | 26,951 | 33.6% |
| American/Mesa/SkyWest Airlines | 3 | 5 | -40.0% | 22 | 25 | -12.0% |
| Delta/SkyWest Airlines | 6 | 2 | 200.0% | 31 | 21 | 47.6% |
| FedEx | 0 | 0 | | 0 | 0 | |
| JetBlue Airways | 19 | 33 | -42.4% | 429 | 251 | 70.9% |
| Southwest Airlines | 0 | 4 | -400.0% | 17 | 7 | 142.9% |
| UPS | 0 | 0 | | 0 | 1 | -100.0% |
| Subtotal 10PM-11PM | 28 | 44 | -36.4% | 499 | 305 | 63.6% |
| 11PM- 7AM Activity | 2017 | 2016 | Change | 2017 | 2016 | Change |
| American/Mesa/SkyWest Airlines | 0 | 2 | -200.0% | 11 | 25 | -56.0% |
| Delta/SkyWest Airlines | 0 | 0 | | 6 | 4 | 50.0% |
| FedEx | 0 | 0 | | 0 | 0 | |
| JetBlue Airways | 14 | 15 | -6.7% | 247 | 133 | 85.7% |
| Southwest Airlines | 0 | 0 | | 5 | 1 | 400.0% |
| UPS | 0 | 0 | | 0 | 0 | |
| Subtotal 11PM-7AM | 14 | 17 | -17.6% | 269 | 163 | 65.0% |
| TOTAL | 42 | 61 | -31.1% | 768 | 468 | 64.1% |

Notes:

1.3% (42 of 3,123) of total commercial operations occurred between 10pm - 7am.

1.4 flights - Nightly average for all late night (10:00 PM—7:00 AM) commercial flights, includes unanticipated delays.

0.5 flights - Nightly average for commercial flights after 11 PM.

Of the 42 Late-Night Operations, 48% were due to poor weather conditions, 19% were due to unknown reasons, 14% were due to maintenance issues, 7% occurred during the five-minute grace period, 5% were due to staffing-related issues, 2% were due to air traffic control-related issues, 2% were due to the operation of ferry flights and 2% were due to customer-related issues.

| AIRPORT NOISE VIOLATIONS | | | | | | |
|---|-----------------|-----------------|---------------|--------------------|------------------|----------------|
| LGB Current Month & Calendar Year-To-Date Statistics | | | | | | |
| December 2017 | | | | | | |
| December | | | | CY-T-D 2017 | | |
| Air Carrier Noise Violations | 2017 | 2016 | Change | 2017 | 2016 | Change |
| American/Mesa Airlines | 2 | 0 | 200.0% | 9 | 4 | 125.0% |
| Delta/SkyWest Airlines | 0 | 0 | | 4 | 4 | 0.0% |
| FedEx | 0 | 0 | | 0 | 0 | |
| JetBlue Airways | 14 | 16 | -12.5% | 247 | 126 | 96.0% |
| Southwest Airlines | 0 | 0 | | 3 | 0 | 300.0% |
| UPS | 0 | 0 | | 0 | 1 | -100.0% |
| Subtotal | 16 | 16 | 0.0% | 263 | 135 | 94.8% |
| Commuter Noise Violations | 2017 | 2016 | Change | 2017 | 2016 | Change |
| American/SkyWest Airlines | 0 | 0 | | 0 | 0 | |
| Delta/SkyWest Airlines | 0 | 0 | | 0 | 1 | -100.0% |
| Subtotal | 0 | 0 | | 0 | 1 | -100.0% |
| Non-Commercial Noise Violations | 2017 | 2016 | Change | 2017 | 2016 | Change |
| All GA, Charter & Other | 9 | 19 | -52.6% | 172 | 176 | -2.3% |
| TOTAL | 25 | 35 | -28.6% | 435 | 312 | 39.4% |
| Monetary Fines | | | | | | |
| Airport Surcharges | \$1,400 | \$1,500 | | \$24,500 | \$18,600 | |
| Consent Decree | \$78,000 | \$90,000 | | \$1,284,000 | \$600,000 | |
| TOTAL | \$79,400 | \$91,500 | | \$1,308,500 | \$618,600 | |

| AIRPORT OPERATIONS | | | | | | |
|---|---------------|---------------|---------------|--------------------|----------------|---------------|
| LGB Current Month & Calendar Year-To-Date Statistics | | | | | | |
| December 2017 | | | | | | |
| December | | | | CY-T-D 2017 | | |
| Airport Operations (FAA) | 2017 | 2016 | Change | 2017 | 2016 | Change |
| Air Carrier + Commuter Carriers | 3,123 | 2,659 | 17.5% | 36,013 | 26,951 | 33.6% |
| Air Taxi + General Aviation | 22,759 | 18,683 | 21.8% | 284,432 | 285,166 | -0.3% |
| Military Operations | 90 | 73 | 23.3% | 1,352 | 1,304 | 3.7% |
| Total Aircraft Operations | 25,972 | 21,415 | 21.3% | 321,797 | 313,421 | 2.7% |

Notes:

0.1% (25 of 25,972) of the Airport's total aircraft operations (Commercial & GA) resulted in an aircraft noise violation.

0.5% (16 of 3,123) of the Airport's Commercial operations (Commercial & Commuter) resulted in an aircraft noise violation.

AIRCRAFT NOISE VIOLATORS

December 2017

| OWNERNAME | DATE | TIME | A/D | RWY | FLIGHT # | A/C TYPE | ORIG/DEST | SEL | LIMIT | STATUS |
|--------------------|------------|----------|-----|-----|----------|----------|-----------|-------|-------|---------------|
| Emprise Air LLC | 12/2/2017 | 23:39:03 | D | 30 | | DA40 | | 81.1 | 79.0 | VIO |
| JetBlue Airways | 12/8/2017 | 1:16:15 | A | 30 | JBU1417 | A320 | AUS | 90.9 | 79.0 | VIO + Alt Enf |
| JetBlue Airways | 12/10/2017 | 0:41:06 | A | 30 | JBU943 | A320 | FLL | 91.0 | 79.0 | VIO + Alt Enf |
| Swift Air LLC | 12/11/2017 | 23:06:55 | D | 30 | | B734 | | 91.8 | 79.0 | VIO |
| Elite Aircraft LLC | 12/14/2017 | 14:57:50 | D | 25R | | C172 | | 94.5 | 92.0 | VIO |
| NPM Equipment | 12/17/2017 | 0:08:39 | A | 30 | | CL30 | | 91.4 | 79.0 | VIO |
| American Airlines | 12/18/2017 | 22:19:43 | A | 30 | ASH5965 | CRJ9 | PHX | 92.9 | 90.0 | VIO |
| Island Express | 12/18/2017 | 23:10:26 | A | 30 | | S-76 | | 86.0 | 79.0 | VIO |
| Private | 12/20/2017 | 14:00:40 | D | 30 | | TBM3 | | 106.0 | 102.5 | VIO |
| Private | 12/21/2017 | 12:13:29 | D | 25R | | C210 | | 95.3 | 92.0 | VIO |
| Mammoth Beach LLC | 12/22/2017 | 18:21:09 | A | 25R | | B350 | | 91.3 | 88.0 | VIO |
| JetBlue Airways | 12/23/2017 | 0:28:27 | A | 30 | JBU405 | A320 | SLC | 93.7 | 79.0 | VIO + Alt Enf |
| JetBlue Airways | 12/24/2017 | 23:20:41 | D | 30 | JBU1436 | A320 | SFO | 87.1 | 79.0 | VIO + Alt Enf |
| JetBlue Airways | 12/25/2017 | 0:02:10 | A | 30 | JBU405 | A320 | BOS | 92.7 | 79.0 | VIO + Alt Enf |
| JetBlue Airways | 12/25/2017 | 0:45:43 | D | 30 | JBU726 | A320 | SJC | 87.2 | 79.0 | VIO + Alt Enf |
| JetBlue Airways | 12/26/2017 | 2:13:43 | A | 30 | JBU405 | A320 | BOS | 93.7 | 79.0 | VIO + Alt Enf |
| American Airlines | 12/26/2017 | 22:49:53 | A | 30 | ASH5965 | CRJ9 | PHX | 92.7 | 90.0 | VIO |
| JetBlue Airways | 12/26/2017 | 23:45:50 | D | 30 | JBU14 | A320 | JFK | 93.1 | 79.0 | VIO + Alt Enf |
| JetBlue Airways | 12/28/2017 | 22:08:30 | A | 30 | JBU405 | A320 | BOS | 93.4 | 90.0 | VIO |
| Private | 12/30/2017 | 0:18:47 | A | 30 | | FA7X | | 90.1 | 79.0 | VIO |
| JetBlue Airways | 12/30/2017 | 23:23:36 | A | 30 | JBU1013 | A320 | PHX | 94.0 | 79.0 | VIO + Alt Enf |
| JetBlue Airways | 12/31/2017 | 23:20:17 | D | 30 | JBU180 | A320 | LAS | 88.6 | 79.0 | VIO + Alt Enf |
| JetBlue Airways | 12/31/2017 | 23:22:23 | D | 30 | JBU944 | A320 | FLL | 91.1 | 79.0 | VIO + Alt Enf |
| JetBlue Airways | 12/31/2017 | 23:25:32 | D | 30 | JBU2132 | A320 | SLC | 90.9 | 79.0 | VIO + Alt Enf |
| JetBlue Airways | 12/31/2017 | 23:38:22 | D | 30 | JBU1436 | A320 | SFO | 90.5 | 79.0 | VIO + Alt Enf |

DEFINITIONS:

A/C Type — Aircraft Type

RWY — Runway

A/D/G — Arrival / Departure / Ground Operation

SEL — SENEL — Single Event Noise Exposure Level (dBA)

ALT ENF — Alternative Enforcement

VIO — Violation

AIR CARRIER NOISE BUDGET PERFORMANCE

January 2017 - December 2017

| RMT # | NOISE BUDGET | ACTUAL | PERCENT BUDGET USED |
|-------|--------------|--------|---------------------|
| 9 | 70.7 | 63.6 | 89.9% |
| 10 | 84.6 | 87.6 | 103.5% |

DEFINITIONS:

RMT — Remote Monitoring Terminal

TOTAL NOISE BUDGET PERFORMANCE

January 2017 - December 2017

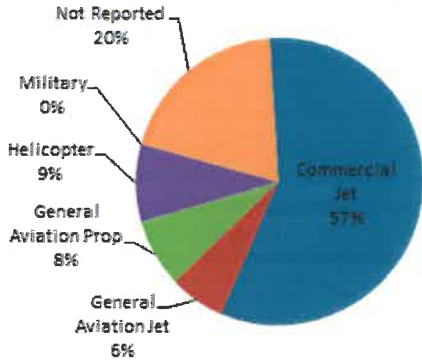
| RMT # | NOISE BUDGET | ACTUAL | PERCENT BUDGET USED |
|-------|--------------|--------|---------------------|
| 9 | 102.7 | 71.4 | 69.5% |
| 10 | 120.9 | 101.4 | 83.8% |

Source: LGB staff calculations

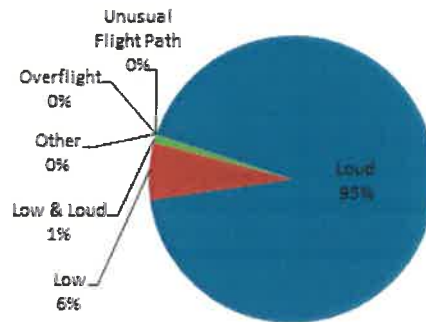
LGB AIRCRAFT NOISE COMPLAINTS

December 2017

Complaints by Aircraft Types



Complaints by Concern



Complaints by Zip Code¹

| Zip Code | Complaints | Units |
|--------------------|------------|-----------|
| 90740 | 12 | 2 |
| 90744 | 1 | 1 |
| 90803 | 1 | 1 |
| 90805 | 20 | 1 |
| 90807 | 15 | 7 |
| 90808 | 4 | 2 |
| 90815 | 1 | 1 |
| 92612 | 12 | 1 |
| 92626 | 521 | 2 |
| 92647 | 13 | 2 |
| 92648 | 52 | 5 |
| 92649 | 125 | 1 |
| Grand Total | 777 | 26 |

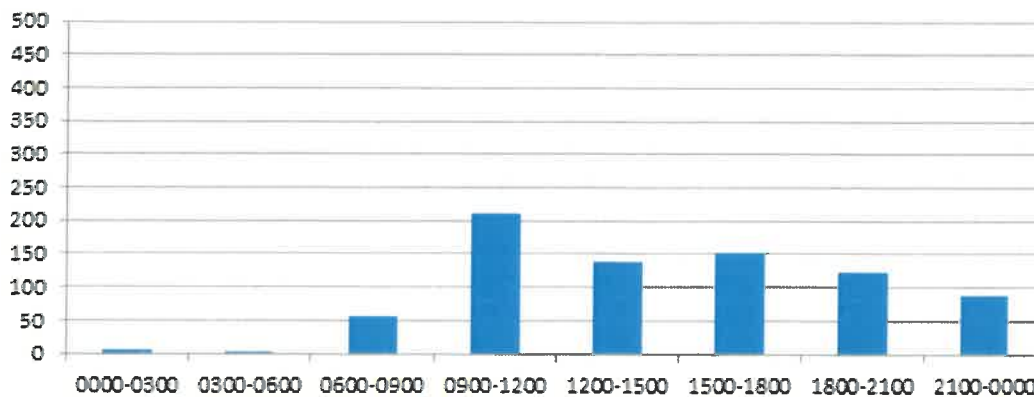
Long Beach Residents' Helicopter Complaints Submitted to FAA²

| Zip Code | Individual Complaints | Number of Individuals | Anonymous Complaints | Total Complaints |
|--------------------|-----------------------|-----------------------|----------------------|------------------|
| 90802 | 0 | n/a | 14 | 14 |
| 90803 | 135 | 8 | 41 | 176 |
| 90804 | 3 | 1 | 1 | 4 |
| 90808 | 0 | n/a | 3 | 3 |
| 90814 | 2 | 1 | 105 | 107 |
| 90815 | 1 | 1 | 0 | 1 |
| Grand Total | 141 | 11 | 164 | 305 |

¹ These data include data submitted directly to Long Beach Airport and does not include data submitted to FAA.

² These data reflect helicopter noise complaints submitted directly to FAA.

Complaints by Time





long beach airport



Long Beach Airport

4100 E. Donald Douglas Drive, Long Beach, CA 90808

www.lgb.org • lgbarpt@longbeach.gov

Administration • (562) 570-2619