



**EVERYONE HOME
LONG BEACH**

Everyone Home Long Beach

July 20, 2018



LONG BEACH
DEPARTMENT OF HEALTH
AND HUMAN SERVICES

Federal Definition of Prevention

Homeless “But For” Assistance

- No appropriate subsequent housing options have been identified;
- The household lacks the financial resources to obtain immediate housing or remain in its existing housing; and
- The household lacks support networks needed to obtain immediate housing or remain in its existing housing.
- At or below 30% Area Median Income (AMI)

Historical Prevention Approach

- Emergency Solutions Grant
- Supportive Services for Veterans and their Families
- HOME Security Deposit
- Community Partnerships
- Faith Based Community
- Self Resolution

FY2018 Funding

\$288,229

housing assistance

rental arrears

security deposits

utility deposits

utility payments



Serves 115 people

Causes of Homelessness



- Insufficient Income/Wages
- Low vacancy rate
- Increasing costs of living and rentals
- Inadequate Social Safety Net
- Health/Mental Health Conditions
- Untreated Substance Abuse
- Domestic Violence
- History of Incarceration
- History of Child Abuse

As it Stands

- The current prevention definition limits the ability to address the causes of homelessness
- We propose a more inclusive definition of prevention, to include:
 - The precariously housed
 - Entitlement dependent households
 - Factors that lead to housing instability
 - Poorly resourced neighborhoods

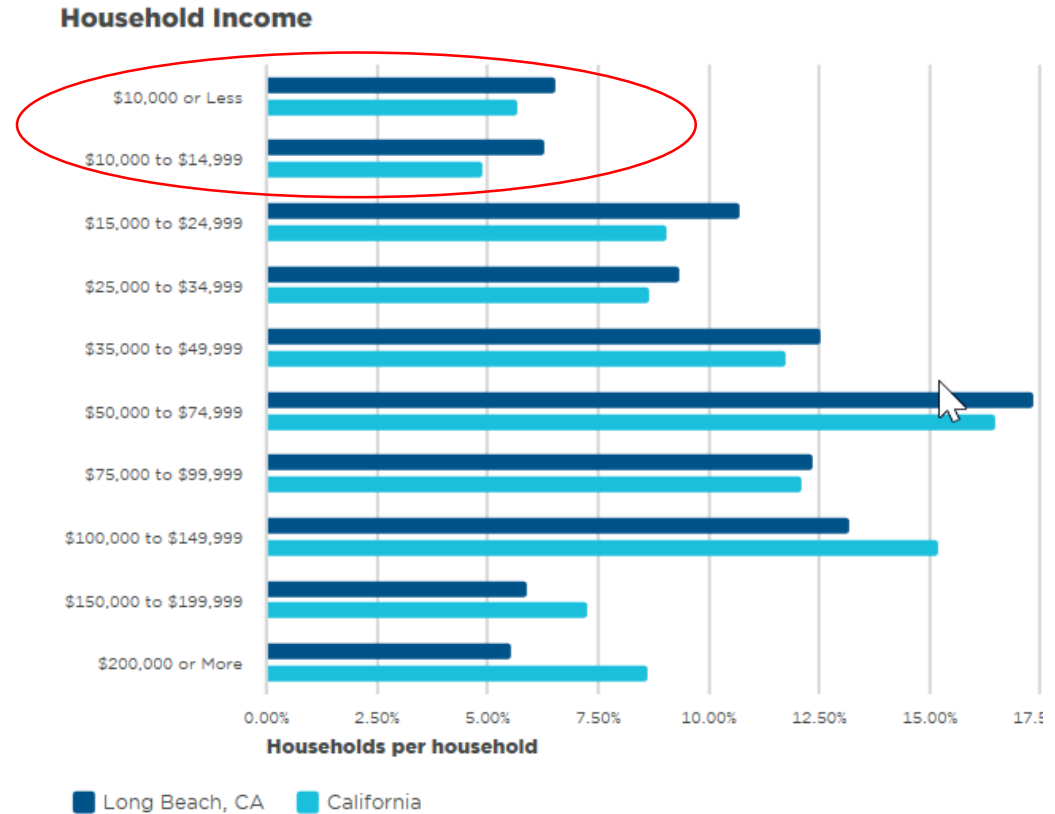
Precariously Housed

- 30% AMI (\$16,545)

and/or

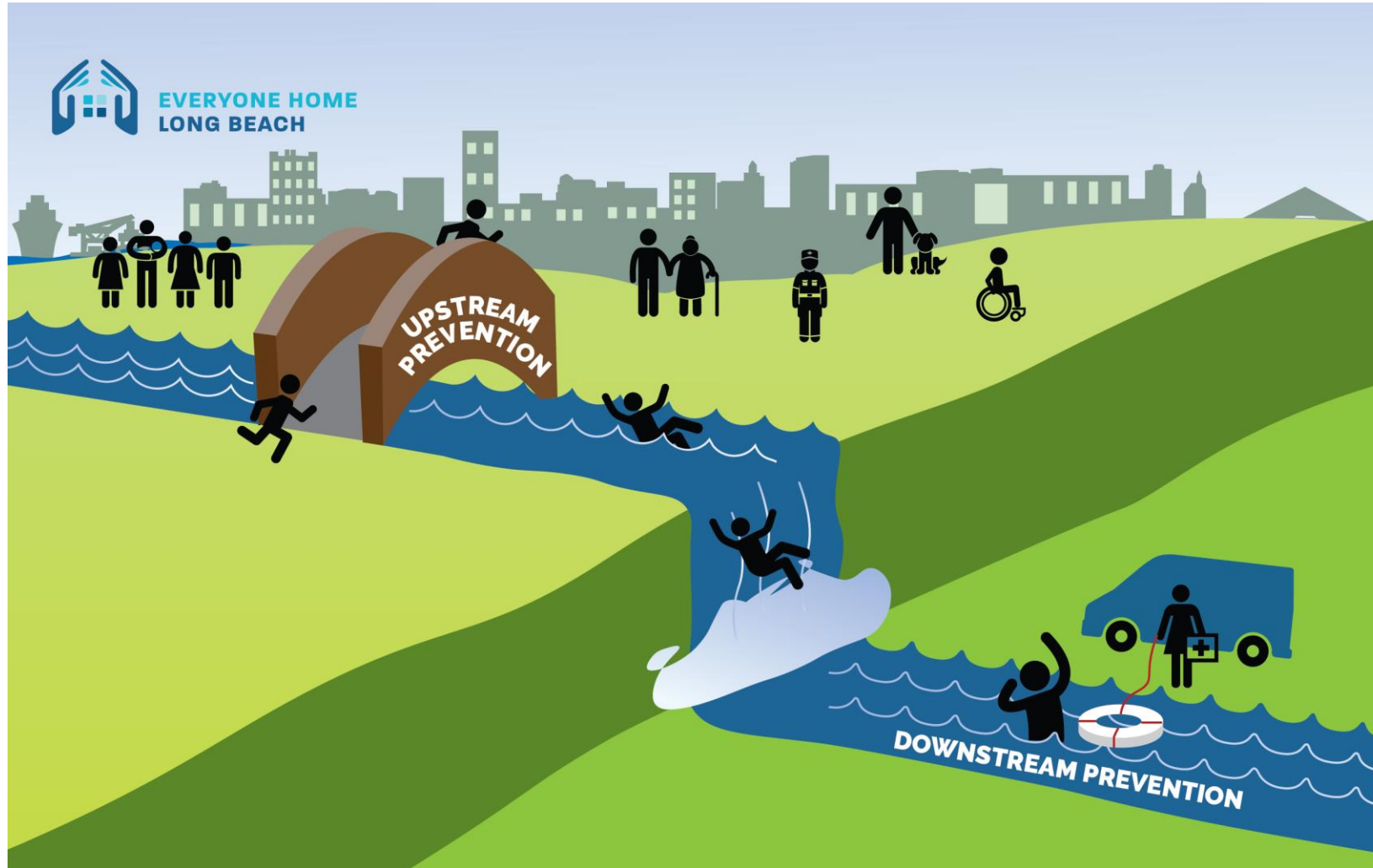
- Pay 90% of income

**12.8% of Long Beach Households
Over 20,000 Households**



Sources: US Census 2012-2016 ACS

A Model that Works!



Prevention Continuum

UPSTREAM PREVENTION
Reducing the Risk of Homelessness

- Building financial stability through Job Skills/Employment Opportunities
- Strengthening family relationships/reducing domestic violence
- Increasing Health/Behavioral Health Services Access and Education
- Increasing Affordable Housing Opportunities for Precariously Housed

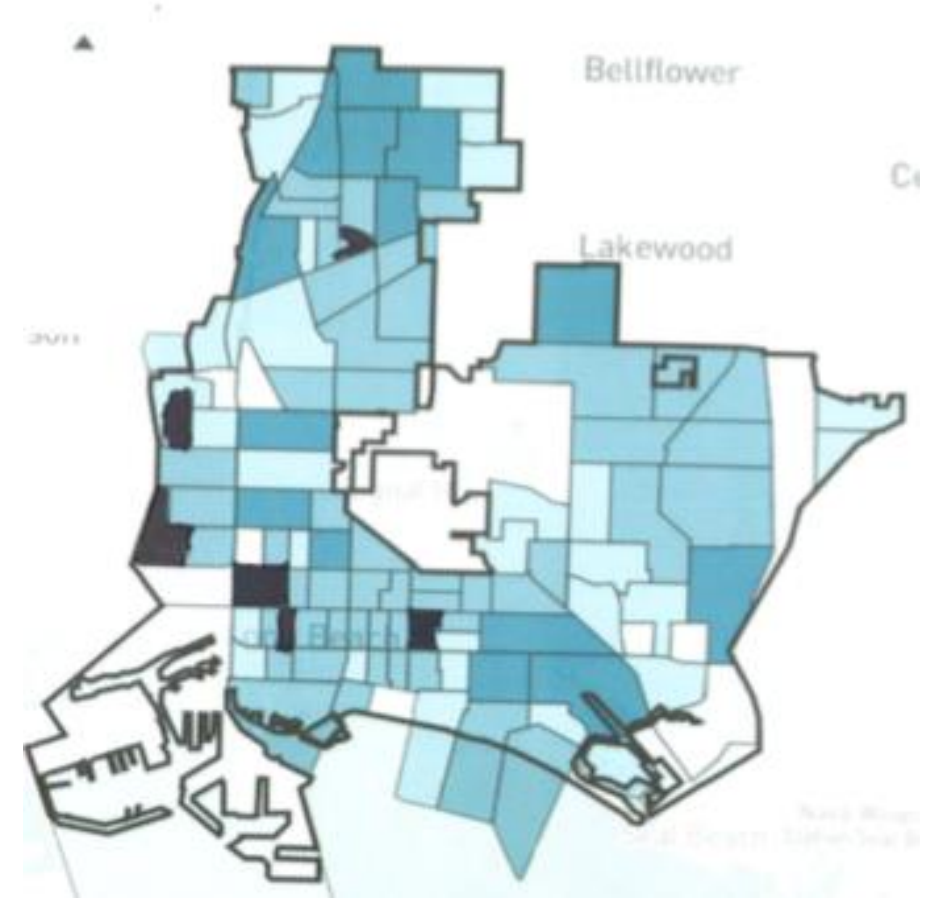
DOWNSTREAM PREVENTION
Keeping People Housed

- Rental Supports
- Moving Supports
- Utility Assistance
- Landlord Incentives
- Legal Support
- Wrap around services

Place-Based Approach

Based on Community Assessment:

- Focus on areas of high need
- Align existing programs to create an upstream focused model
- Better coordinate resources
- Engage community for resident decision making



Recommendations

Design and implement a robust, coordinated system supporting job readiness, employment and financial stability in priority areas.

- Build income and financial capacities among the precariously housed.
- Access to child care
- Educational connections and improved results

Recommendations

Strengthen families to reduce family conflict and domestic violence leading to homelessness.

- Family strengthening opportunities
- Fatherhood programs
- Domestic violence programs
- Coordination between workforce development programs and strengthening families opportunities

Recommendations

Design and implement a coordinated health system (including physical, behavioral and community health) to increase the overall health of communities.

- Health education programs
- Health insurance enrollment
- Education on effective utilization of the health care system
- Continuum of mental health and substance use services
- Hospital and jail discharge planning and connection to services

Recommendations

Build the capacity to maintain housing and increase access to existing housing supports.

- Tenant protections and legal supports
- Emergency rental and utility payments
- Security Deposits
- Access to apartment units for Section 8 voucher holders
- Supports for people utilizing housing subsidies to remain housed
- Housing navigation services

Expected Funding

- State Emergency Solutions Grant \$287,000
 - Measure H \$197,500
 - SHARE Utility Arrears (no limit per household)
- \$484,500**

Serves approximately **195 people**



**EVERYONE HOME
LONG BEACH**

Thank you

**Shannon Parker, Homeless Services Officer
Kelly Colopy, Director of Health & Human Services**

**2525 Grand Avenue
Long Beach, CA 90815
Phone: (562) 570-4000
www.longbeach.gov/health**