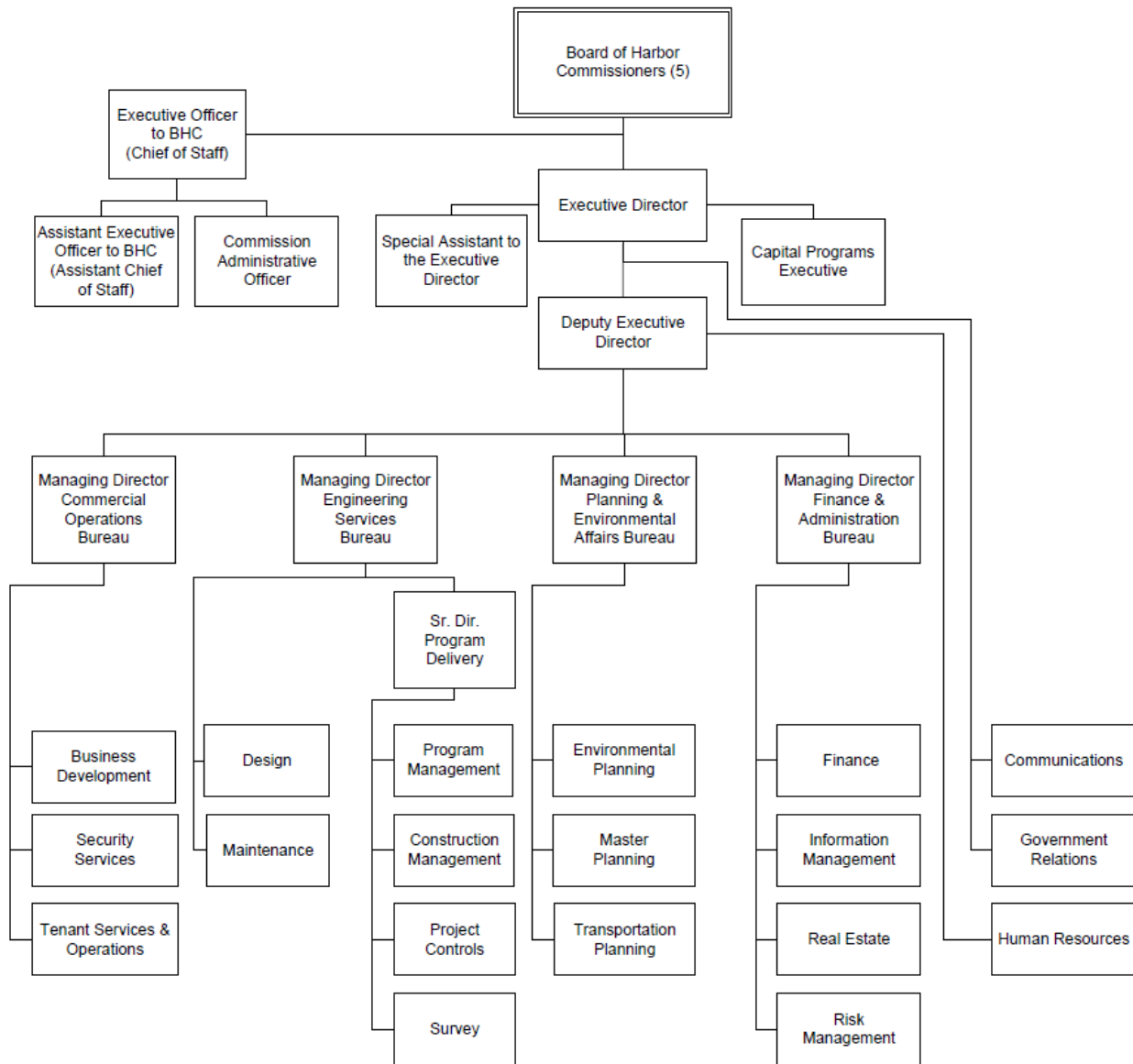


Harbor



Mission Statement

The Port of Long Beach is an international gateway for the reliable, efficient and sustainable movement of goods for the benefit of our local and global economies.

Financial Summary

	Actual	Adopted*	Adjusted**	Adopted*
	FY 17	FY 18	FY 18	FY 19
Revenues:				
Property Taxes	-	-	-	-
Other Taxes	-	-	-	-
Franchise Fees	-	-	-	-
Licenses and Permits	38,087	-	-	-
Fines and Forfeitures	-	-	-	-
Use of Money & Property	3,988,526	8,536,000	8,536,000	14,107,000
Revenue from Other Agencies	70,365,350	106,362,000	106,362,000	68,900,000
Charges for Services	383,246,659	381,874,000	381,874,000	401,605,000
Other Revenues	12,107,134	26,000,000	26,000,000	1,000,000
Interfund Services - Charges	-	-	-	-
Intrafund Services - General Fund Charges	-	-	-	-
Harbor & Water P/R Rev Trsfs	-	-	-	-
Other Financing Sources	-	225,000,000	225,000,000	358,121,000
Operating Transfers	-	-	-	-
	-----	-----	-----	-----
Total Revenues	469,745,755	747,772,000	747,772,000	843,733,000
Expenditures:				
Salaries, Wages and Benefits	66,602,403	84,958,183	84,958,183	84,558,147
Overtime	1,431,064	1,901,088	1,901,088	1,511,789
Materials, Supplies and Services	348,054,980	48,180,675	48,180,675	62,015,653
Internal Support	31,223,429	34,069,129	34,069,129	35,501,880
Capital Purchases	3,750,058	443,555,284	443,555,284	682,135,803
Debt Service	72,186,271	95,211,400	95,211,400	93,602,219
Transfers to Other Funds	19,448,131	18,661,550	18,661,550	19,959,900
	-----	-----	-----	-----
Total Expenditures	542,696,337	726,537,309	726,537,309	979,285,391
Personnel (Full-time Equivalent)	583.80	583.50	583.50	593.50

* Amounts exclude all-years carryover. See budget ordinance in the back of this document.

** Amounts as published in the FY 19 Proposed Budget released July 3, 2018.

Personnel Summary

	FY 17 Adopt FTE	FY 18 Adopt FTE	FY 19 Adopt FTE	FY 18 Adopted Budget	FY 19 Adopted Budget
Executive Director	1.00	1.00	1.00	364,140	358,373
Accountant II	1.00	1.00	1.00	75,274	76,780
Accountant III	3.00	3.00	1.00	239,778	87,085
Accounting Clerk II	1.00	1.00	1.00	44,542	47,885
Accounting Clerk III	1.00	1.00	1.00	53,036	54,097
Accounting Technician	4.00	4.00	4.00	235,529	240,210
Administrative Aide I	3.00	3.00	5.00	171,366	271,389
Administrative Aide II	7.00	7.00	7.00	420,004	418,741
Administrative Analyst I	4.00	5.00	9.00	355,414	670,524
Administrative Analyst II	7.00	5.00	4.00	418,176	345,936
Administrative Analyst III	9.00	11.00	14.00	1,029,072	1,291,517
Administrative Analyst II-NC	-	-	0.50	-	33,668
Administrative Intern-NC/H36	7.50	3.50	-	132,052	-
Administrative Intern-NC/H38	0.50	1.00	-	42,050	-
Administrative Intern-NC/H39	4.00	4.50	-	197,261	-
Administrative Intern-NC/H40	0.50	1.00	-	45,644	-
Administrative Intern-NC/H43	-	-	10.50	-	512,603
Assistant Administrative Analyst I	3.00	2.00	2.00	116,300	116,784
Assistant Administrative Analyst II	14.00	12.00	13.00	832,044	910,963
Assistant Director of Business Development	1.00	1.00	1.00	146,217	149,141
Assistant Director of Communications	1.00	1.00	1.00	145,656	148,569
Assistant Director of Construction Management	1.00	1.00	1.00	160,839	164,056
Assistant Director of Engineering Design	1.00	1.00	1.00	151,439	161,263
Assistant Director of Environmental Planning	1.00	1.00	1.00	146,960	149,899
Assistant Director of Finance	1.00	1.00	1.00	151,439	154,468
Assistant Director of Homeland Security	1.00	1.00	1.00	156,659	159,792
Assistant Director of Human Resources	1.00	1.00	1.00	146,217	146,000
Assistant Director of Information Management	1.00	1.00	1.00	157,496	160,140
Assistant Director of Program Management	1.00	1.00	1.00	151,439	153,000
Assistant Director of Real Estate	1.00	1.00	1.00	146,217	149,141
Assistant Director of Security Support	1.00	1.00	1.00	156,659	159,792
Assistant Executive Officer to the Board	1.00	1.00	1.00	114,444	116,733
Assistant Marketing Manager III	2.00	2.00	2.00	189,225	193,010
Assistant Terminal Services Manager	1.00	1.00	1.00	85,378	87,085
Assistant to the Executive Director	1.00	1.00	1.00	91,715	96,352
Building Maintenance Engineer	3.00	4.00	3.00	304,572	237,658
Capital Programs Executive	1.00	1.00	1.00	260,100	265,302
Capital Projects Coordinator II	1.00	1.00	1.00	83,285	84,951
Capital Projects Coordinator III	6.00	5.00	4.00	551,958	450,667
Capital Projects Coordinator IV	1.00	2.00	3.00	231,155	366,526
Carpenter	1.00	1.00	1.00	62,254	64,769
Chief Construction Inspector	1.00	1.00	1.00	103,874	115,630
Chief Surveyor	-	1.00	1.00	103,433	120,629
Civil Engineer	15.00	12.00	12.00	1,249,823	1,326,201

Personnel Summary

Classification	FY 17 Adopt FTE	FY 18 Adopt FTE	FY 19 Adopt FTE	FY 18 Adopted Budget	FY 19 Adopted Budget
Civil Engineering Assistant	8.00	6.00	6.00	445,286	455,058
Civil Engineering Associate	8.00	11.00	13.00	991,475	1,262,282
Clerk Typist II	4.00	2.00	2.00	93,090	94,952
Clerk Typist III	16.00	18.00	15.00	877,722	761,244
Clerk Typist III-NC	-	1.00	1.00	42,692	43,541
Clerk Typist II-NC	1.00	1.00	-	39,948	-
Clerk Typist IV	2.00	2.00	1.00	100,263	55,446
Commercial Diver II	6.00	6.00	6.00	497,243	527,216
Commission Administrative Officer	1.00	1.00	1.00	104,440	106,531
Communications Officer	3.00	4.00	5.00	385,245	516,547
Construction Inspector I	2.00	1.00	1.00	64,223	68,153
Construction Inspector II	14.00	13.00	13.00	1,119,779	1,206,745
Construction Supervisor	1.00	1.00	1.00	75,274	62,846
Contract Administrator II	1.00	-	-	-	-
Contract Compliance Analyst II	1.00	1.00	-	76,454	-
Contract Compliance Analyst III	-	-	1.00	-	89,736
Deputy Chief Harbor Engineer II	8.00	9.00	9.00	1,269,488	1,372,267
Deputy Executive Director	-	1.00	1.00	306,918	313,056
Director of Business Development	1.00	1.00	1.00	167,106	170,447
Director of Communications	1.00	1.00	1.00	171,666	163,972
Director of Construction Management	1.00	1.00	1.00	169,444	172,001
Director of Engineering Design	1.00	1.00	1.00	169,444	172,832
Director of Environmental Services	1.00	1.00	1.00	163,763	167,039
Director of Finance	1.00	1.00	1.00	167,104	170,445
Director of Governmental Affairs	1.00	1.00	1.00	163,763	167,039
Director of Human Resources	1.00	1.00	1.00	171,666	170,447
Director of Information Management	1.00	1.00	1.00	177,549	181,100
Director of Maintenance	1.00	1.00	1.00	163,763	172,832
Director of Master Planning	1.00	1.00	1.00	163,763	167,039
Director of Program Management	1.00	1.00	1.00	171,666	170,447
Director of Project Controls	1.00	1.00	1.00	167,106	168,300
Director of Real Estate	1.00	1.00	1.00	171,820	175,258
Director of Risk Management	1.00	1.00	1.00	163,763	167,039
Director of Security	1.00	1.00	1.00	182,478	186,128
Director of Surveys	1.00	1.00	1.00	163,763	167,039
Director of Tenant Services & Operations	1.00	1.00	1.00	163,763	167,039
Director of Transportation Planning	1.00	1.00	1.00	163,763	167,039
Electrical Engineer	1.00	1.00	1.00	114,274	121,268
Electrical Supervisor	1.00	1.00	1.00	77,271	78,816
Electrician	3.00	3.00	4.00	196,483	260,118
Engineering Tech II	1.00	1.00	1.00	72,790	77,245
Environmental Remediation Specialist II	1.00	1.00	1.00	126,495	134,237
Environmental Specialist Assistant	3.00	3.00	3.00	227,787	248,401
Environmental Specialist Associate	2.00	2.00	3.00	174,125	280,519

Personnel Summary

Classification	FY 17 Adopt FTE	FY 18 Adopt FTE	FY 19 Adopt FTE	FY 18 Adopted Budget	FY 19 Adopted Budget
Environmental Specialist I	5.00	5.00	4.00	556,302	462,920
Environmental Specialist II	2.00	2.00	2.00	229,928	231,295
Equipment Mechanic I	-	-	1.00	-	64,769
Equipment Mechanic II	3.00	3.00	2.00	193,255	125,258
Equipment Operator III	5.00	5.00	5.00	278,182	282,827
Executive Officer to the Board	1.00	1.00	1.00	187,993	191,753
Executive Secretary - Harbor	4.00	4.00	4.00	303,000	309,060
Garage Service Attendant II	2.00	2.00	2.00	99,343	103,356
Garage Service Attendant I-NC	0.20	0.40	0.40	13,822	14,381
Garage Supervisor	1.00	1.00	1.00	80,777	93,079
Gardener II	2.00	2.00	2.00	90,130	103,356
General Maintenance Assistant	5.00	4.00	4.00	200,600	204,662
Geographic Information Systems Analyst II	3.00	3.00	3.00	253,391	268,899
Geographic Information Systems Analyst III	1.00	1.00	1.00	93,394	99,110
Geographic Information Systems Tech I	1.00	1.00	1.00	58,255	62,544
Geographic Information Systems Tech II	2.00	2.00	2.00	136,281	139,006
Harbor Control Center Supervisor	1.00	1.00	1.00	94,613	91,529
Harbor Maintenance Mechanic I	1.00	-	3.00	-	156,619
Harbor Maintenance Mechanic II	6.00	7.00	4.00	387,815	243,654
Harbor Marine Engineer	-	1.00	1.00	103,433	109,763
Intermodal Operations Coordinator	-	2.00	2.00	210,253	227,696
Intermodal Operations Manager	2.00	1.00	1.00	151,439	154,467
Maintenance Assistant I	8.00	8.00	8.00	301,401	320,674
Maintenance Assistant II	1.00	1.00	1.00	42,482	44,199
Maintenance Assistant III	6.00	6.00	6.00	273,600	283,075
Maintenance Assistant I-NC	1.50	1.50	1.50	49,776	51,790
Maintenance Planner I	-	-	1.00	-	66,086
Maintenance Planner II	4.00	3.00	3.00	235,032	235,164
Maintenance Supervisor	2.00	2.00	2.00	146,744	149,609
Manager of Accounting	1.00	1.00	1.00	130,552	140,994
Manager of Air Quality Practices	1.00	1.00	1.00	134,688	141,363
Manager of Business Applications	1.00	1.00	1.00	148,263	151,228
Manager of Business Development	1.00	1.00	1.00	130,552	133,163
Manager of Business Development-FTZ	1.00	1.00	1.00	130,552	133,163
Manager of CEQA/NEPA Projects	1.00	1.00	1.00	134,571	138,907
Manager of Commercial Trade - Import Cargo	1.00	1.00	1.00	130,552	133,163
Manager of Commercial Trade - Ocean Carriers	1.00	1.00	1.00	130,550	133,161
Manager of Contract Compliance	1.00	1.00	1.00	140,454	143,814
Manager of Cyber Information Security	-	1.00	1.00	150,858	153,875
Manager of Emergency Management	1.00	1.00	1.00	136,858	139,595
Manager of Engineering Technology	1.00	1.00	1.00	140,995	143,814
Manager of Environmental Remediation	1.00	1.00	1.00	138,651	141,425
Manager of Facilities Maintenance	1.00	1.00	1.00	130,552	133,163
Manager of Financial Planning & Analysis	1.00	1.00	1.00	145,005	147,905
Manager of Fleet/Utilities	1.00	1.00	1.00	130,552	133,163
Manager of Grants Administration	1.00	1.00	1.00	130,552	133,163
Manager of Harbor Maintenance Administration	-	-	1.00	-	133,163

Personnel Summary

Classification	FY 17 Adopt FTE	FY 18 Adopt FTE	FY 19 Adopt FTE	FY 18 Adopted Budget	FY 19 Adopted Budget
Manager of Harbor Marine	1.00	1.00	1.00	146,634	130,000
Manager of Infrastructure Maintenance	1.00	1.00	1.00	130,552	130,559
Manager of Labor Compliance Administration	1.00	1.00	1.00	119,646	133,161
Manager of Master Planning	1.00	1.00	1.00	134,625	137,700
Manager of Network Operations	1.00	1.00	1.00	150,858	153,875
Manager of Procurement	1.00	-	-	-	-
Manager of Project Controls	1.00	1.00	1.00	135,252	151,439
Manager of Safety/Business Continuity	1.00	1.00	1.00	138,653	141,427
Manager of Security Operations	2.00	2.00	2.00	266,326	271,653
Manager of Sustainable Practices	1.00	1.00	1.00	138,648	141,420
Manager of Technical Security	1.00	1.00	1.00	141,203	144,027
Manager of Transportation Planning	1.00	1.00	1.00	131,154	138,458
Manager of Water Quality	1.00	1.00	1.00	138,651	141,425
Managing Director	6.00	5.00	4.00	1,196,223	966,896
Marketing Manager	-	-	2.00	-	183,454
Mechanical Supervisor	1.00	1.00	1.00	71,632	89,359
Members - Boards / Commissions	-	-	-	26,000	26,000
Motor Sweeper Operator	1.00	1.00	1.00	57,585	60,046
Office Automation Analyst I	1.00	1.00	2.00	65,354	144,992
Office Automation Analyst II	2.00	2.00	1.00	154,509	80,804
Office Automation Analyst III	2.00	2.00	2.00	170,756	174,171
Office Automation Analyst IV	1.00	1.00	1.00	73,412	74,880
Office Services Assistant III	1.00	1.00	1.00	47,389	49,304
Office Systems Analyst I	2.00	2.00	1.00	199,079	101,530
Office Systems Analyst II	6.00	6.00	6.00	667,278	684,229
Office Systems Analyst III	11.00	11.00	14.00	1,386,167	1,769,987
Painter II	1.00	1.00	1.00	59,209	61,601
Painter Supervisor	1.00	1.00	1.00	70,556	71,919
Park Maintenance Supervisor	1.00	1.00	1.00	63,904	68,554
Payroll Personnel Assistant III	1.00	1.00	-	55,686	-
Plumber	6.00	6.00	6.00	398,180	414,479
Plumber Supervisor	1.00	1.00	1.00	77,271	78,816
Port Commercial Appraiser	1.00	1.00	1.00	118,928	121,306
Port Communications Specialist II	0.20	0.20	0.20	11,206	11,431
Port Communications Specialist III	4.00	4.00	3.00	289,283	242,886
Port Communications Specialist IV	3.00	3.00	4.00	225,173	310,744
Port Communications Specialist V	7.00	7.00	5.00	635,220	448,957
Port Financial Analyst I	-	-	1.00	-	82,893
Port Financial Analyst II	-	1.00	1.00	92,216	102,934
Port Financial Analyst III	4.00	3.00	3.00	332,311	347,776
Port Leasing Sales Officer I	1.00	1.00	1.00	58,910	63,152
Port Leasing Sales Officer V	3.00	3.00	4.00	330,298	428,515
Port Planner I	-	-	1.00	-	78,954
Port Planner II	2.00	2.00	1.00	180,767	82,852
Port Planner III	1.00	2.00	1.00	195,036	107,474

Personnel Summary

Classification	FY 17 Adopt FTE	FY 18 Adopt FTE	FY 19 Adopt FTE	FY 18 Adopted Budget	FY 19 Adopted Budget
Port Planner IV	1.00	1.00	2.00	116,030	226,300
Port Planner V	3.00	2.00	2.00	233,645	257,409
Port Risk Manager II	1.00	1.00	1.00	102,075	104,116
Port Security System Operator II	9.00	9.00	9.00	623,486	653,774
Port Security System Operator III	4.00	4.00	4.00	319,800	317,175
Port Security Systems Oper I-NC	2.00	2.00	-	95,138	-
Port Senior Crane Operator	-	2.00	-	121,112	-
Port Trade Analyst	1.00	1.00	1.00	92,197	94,041
Principal Construction Inspector	4.00	4.00	4.00	398,968	424,011
Project Budget Analyst	2.00	3.00	3.00	231,857	219,195
Project Scheduler I	1.00	1.00	1.00	101,080	107,266
Project Scheduler II	1.00	3.00	2.00	336,200	254,634
Records Center Supervisor II	1.00	1.00	1.00	71,618	73,051
Revenue Manager	-	1.00	1.00	130,552	133,163
Safety Specialist	-	-	2.00	-	195,609
Safety Specialist II	2.00	2.00	-	170,756	-
Secretary	9.00	10.00	8.00	502,734	437,472
Senior Accountant	1.00	1.00	1.00	85,430	91,743
Senior Civil Engineer	24.00	25.00	24.00	3,122,072	3,140,395
Senior Director of Design/Maintenance	1.00	1.00	-	190,081	-
Senior Director of Engineering Program Delivery	1.00	1.00	1.00	189,353	193,883
Senior Electrical Engineer	1.00	1.00	2.00	126,495	219,527
Senior Electrical Inspector	1.00	1.00	1.00	88,333	93,643
Senior Engineering Tech I	2.00	2.00	2.00	172,105	182,638
Senior Engineering Tech II	1.00	1.00	1.00	90,552	96,094
Senior Equipment Operator	3.00	1.00	2.00	68,330	140,917
Senior Estimator	-	-	1.00	-	124,725
Senior Executive of Supply Chain Optimization	1.00	-	-	-	-
Senior Port Leasing Officer	1.00	1.00	1.00	118,928	121,306
Senior Program Manager	5.00	5.00	5.00	699,631	743,019
Senior Scheduler	4.00	3.00	3.00	379,486	402,710
Senior Secretary	7.00	8.00	10.00	443,743	581,839
Senior Structural Engineer	1.00	1.00	1.00	132,640	140,758
Senior Survey Technician	6.00	5.00	6.00	389,674	506,659
Senior Surveyor	4.00	4.00	3.00	404,220	321,719
Senior Traffic Engineer	1.40	1.40	1.40	141,945	175,107
Special Assistant to the Executive Director	-	-	1.00	-	135,000
Special Services Officer II	5.00	5.00	5.00	300,390	308,764
Special Services Officer III	39.00	39.00	51.00	2,281,541	3,039,542
Special Services Officer II-NC	10.00	10.00	-	458,200	-
Special Services Officer IV	9.00	9.00	9.00	653,206	658,564
Stock & Receiving Clerk	1.00	1.00	1.00	44,199	38,896
Storekeeper	1.00	1.00	1.00	57,122	48,899
Supervisor of Commercial Diving	1.00	1.00	1.00	104,168	99,833
Supervisor-Stores/Property	1.00	1.00	1.00	61,336	65,780

Key Contacts

Mario Cordero, Executive Director

Duane Kenagy, Interim Deputy Executive Director

Sam Joumbat, Managing Director, Finance & Administration Bureau

Sean Gamette, Managing Director, Engineering Services Bureau

Rick Cameron, Managing Director, Planning and Environmental Affairs Bureau

Noel Hacegaba, Managing Director, Commercial Operations Bureau

Don Kwok, Acting Director of Finance

4801 Airport Plaza Dr.
Long Beach, CA 90815
Phone: (562) 283-7550
www.polb.com

