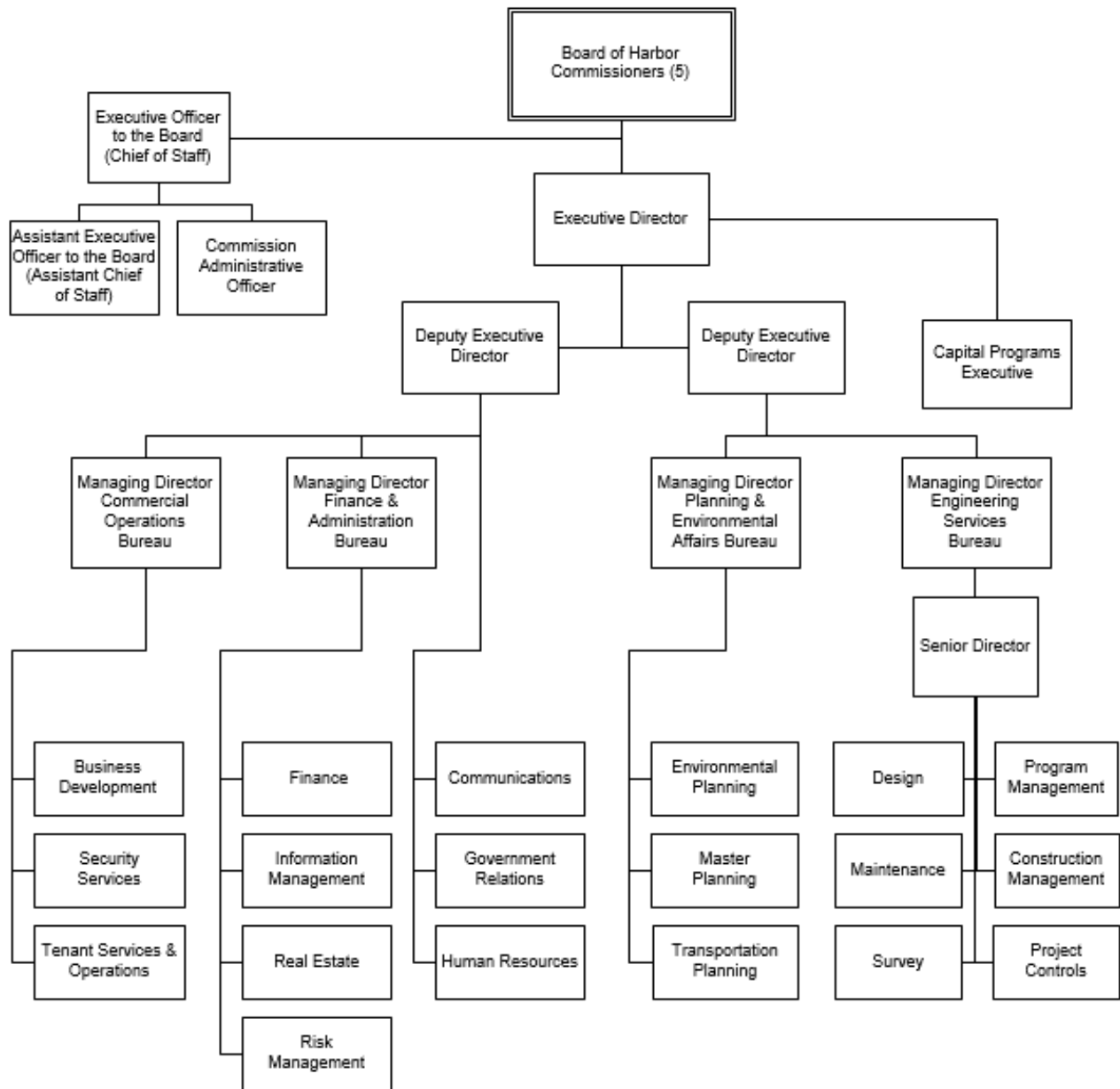


Harbor



Mission Statement

The Port of Long Beach is an international gateway for the reliable, efficient and sustainable movement of goods for the benefit of our local and global economies.

Financial Summary

	Actual FY 18	Adopted* FY 19	Adjusted** FY 19	Adopted* FY 20
Revenues:				
Property Taxes	-	-	-	-
Other Taxes	-	-	-	-
Franchise Fees	-	-	-	-
Licenses and Permits	57,590	-	-	-
Fines and Forfeitures	-	-	-	-
Use of Money & Property	6,898,990	14,107,000	14,107,000	12,427,000
Revenue from Other Agencies	67,133,785	68,900,000	68,900,000	59,448,000
Charges for Services	403,583,580	401,605,000	401,605,000	404,538,198
Other Revenues	3,622,137	1,000,000	1,000,000	21,000,000
Interfund Services - Charges	-	-	-	-
Intrafund Services - General Fund Charges	-	-	-	-
Harbor & Water P/R Rev Trsfs	-	-	-	-
Other Financing Sources	-	358,121,000	358,121,000	48,430,000
Operating Transfers	-	-	-	-
	-----	-----	-----	-----
Total Revenues	481,296,081	843,733,000	843,733,000	545,843,198
Expenditures:				
Salaries, Wages and Benefits	70,490,731	84,558,147	84,558,147	86,484,750
Overtime	2,227,644	1,511,789	1,511,789	1,576,064
Materials, Supplies and Services	369,367,136	62,015,653	62,015,653	61,670,602
Internal Support	34,128,227	35,501,880	35,501,880	37,822,953
Capital Purchases	3,476,294	682,135,803	682,135,803	377,473,228
Debt Service	75,642,659	93,602,219	93,602,219	89,408,000
Transfers to Other Funds	20,083,903	19,959,900	19,959,900	20,135,600
	-----	-----	-----	-----
Total Expenditures	575,416,592	979,285,391	979,285,391	674,571,197
Personnel (Full-time Equivalents)	583.50	593.50	593.50	593.50

* Amounts exclude all-years carryover. See budget ordinance in the back of this document.

** Amounts as published in the FY 20 Proposed Budget released July 3, 2019.

Personnel Summary

	FY 18 Adopt FTE	FY 19 Adopt FTE	FY 20 Adopt FTE	FY 19 Adopted Budget	FY 20 Adopted Budget
Executive Director	1.00	1.00	1.00	358,373	351,346
Accountant I	-	-	1.00	-	64,426
Accountant II	1.00	1.00	1.00	76,780	76,780
Accountant III	3.00	1.00	1.00	87,085	82,529
Accounting Clerk II	1.00	1.00	1.00	47,885	50,290
Accounting Clerk III	1.00	1.00	1.00	54,097	54,097
Accounting Technician	4.00	4.00	3.00	240,210	180,523
Administrative Aide I	3.00	5.00	5.00	271,389	276,589
Administrative Aide II	7.00	7.00	7.00	418,741	423,722
Administrative Analyst I	5.00	9.00	10.00	670,524	759,299
Administrative Analyst II	5.00	4.00	5.00	345,936	439,717
Administrative Analyst III	11.00	14.00	12.00	1,291,517	1,142,963
Administrative Analyst II-NC	-	0.50	-	33,668	-
Administrative Intern-NC/H36	3.50	-	-	-	-
Administrative Intern-NC/H38	1.00	-	-	-	-
Administrative Intern-NC/H39	4.50	-	-	-	-
Administrative Intern-NC/H40	1.00	-	-	-	-
Administrative Intern-NC/H43	-	10.50	9.00	512,603	439,351
Assistant Administrative Analyst I	2.00	2.00	2.00	116,784	124,272
Assistant Administrative Analyst II	12.00	13.00	14.00	910,963	968,065
Assistant Director of Business Development	1.00	1.00	1.00	149,141	149,141
Assistant Director of Communications	1.00	1.00	1.00	148,569	145,000
Assistant Director of Construction Management	1.00	1.00	1.00	164,056	164,411
Assistant Director of Engineering Design	1.00	1.00	1.00	161,263	165,000
Assistant Director of Environmental Planning	1.00	1.00	1.00	149,899	149,899
Assistant Director of Finance	1.00	1.00	1.00	154,468	160,000
Assistant Director of Homeland Security	1.00	1.00	1.00	159,792	160,000
Assistant Director of Human Resources	1.00	1.00	1.00	146,000	149,495
Assistant Director of Information Management	1.00	1.00	1.00	160,140	160,615
Assistant Director of Program Management	1.00	1.00	1.00	153,000	153,000
Assistant Director of Real Estate	1.00	1.00	1.00	149,141	145,000
Assistant Director of Security Support	1.00	1.00	1.00	159,792	159,793
Assistant Executive Officer to the Board	1.00	1.00	1.00	116,733	127,992
Assistant Marketing Manager III	2.00	2.00	2.00	193,010	177,361
Assistant Terminal Services Manager	1.00	1.00	1.00	87,085	87,085
Assistant to the Executive Director	1.00	1.00	1.00	96,352	96,353
Building Maintenance Engineer	4.00	3.00	3.00	237,658	237,658
Capital Programs Executive	1.00	1.00	1.00	265,302	296,135
Capital Projects Coordinator II	1.00	1.00	2.00	84,951	172,131
Capital Projects Coordinator III	5.00	4.00	3.00	450,667	297,943
Capital Projects Coordinator IV	2.00	3.00	5.00	366,526	626,741
Carpenter	1.00	1.00	1.00	64,769	64,769
Chief Construction Inspector	1.00	1.00	1.00	115,630	121,488
Chief Surveyor	1.00	1.00	1.00	120,629	126,906

Personnel Summary

Classification	FY 18 Adopt FTE	FY 19 Adopt FTE	FY 20 Adopt FTE	FY 19 Adopted Budget	FY 20 Adopted Budget
Civil Engineer	12.00	12.00	14.00	1,326,201	1,536,451
Civil Engineering Assistant	6.00	6.00	7.00	455,058	557,481
Civil Engineering Associate	11.00	13.00	13.00	1,262,282	1,278,126
Clerk Typist II	2.00	2.00	1.00	94,952	47,476
Clerk Typist III	18.00	15.00	12.00	761,244	619,311
Clerk Typist III-NC	1.00	1.00	-	43,541	-
Clerk Typist II-NC	1.00	-	-	-	-
Clerk Typist IV	2.00	1.00	1.00	55,446	55,446
Commercial Diver II	6.00	6.00	6.00	527,216	541,058
Commission Administrative Officer	1.00	1.00	1.00	106,531	98,002
Communications Officer	4.00	5.00	5.00	516,547	523,504
Community Program Specialist III	-	-	1.00	-	72,808
Construction Inspector I	1.00	1.00	1.00	68,153	75,303
Construction Inspector II	13.00	13.00	13.00	1,206,745	1,225,555
Construction Supervisor	1.00	1.00	1.00	62,846	62,846
Contract Compliance Analyst II	1.00	-	-	-	-
Contract Compliance Analyst III	-	1.00	1.00	89,736	94,436
Deputy Chief Harbor Engineer II	9.00	9.00	9.00	1,372,267	1,315,363
Deputy Executive Director	1.00	1.00	2.00	313,056	532,064
Director of Business Development	1.00	1.00	1.00	170,447	170,447
Director of Communications	1.00	1.00	1.00	163,972	177,090
Director of Construction Management	1.00	1.00	1.00	172,001	176,117
Director of Engineering Design	1.00	1.00	1.00	172,832	172,832
Director of Environmental Services	1.00	1.00	1.00	167,039	167,039
Director of Finance	1.00	1.00	1.00	170,445	180,000
Director of Governmental Affairs	1.00	1.00	1.00	167,039	167,000
Director of Human Resources	1.00	1.00	1.00	170,447	170,448
Director of Information Management	1.00	1.00	1.00	181,100	181,101
Director of Maintenance	1.00	1.00	1.00	172,832	172,832
Director of Master Planning	1.00	1.00	1.00	167,039	167,040
Director of Program Management	1.00	1.00	1.00	170,447	170,448
Director of Project Controls	1.00	1.00	1.00	168,300	168,948
Director of Real Estate	1.00	1.00	1.00	175,258	164,054
Director of Risk Management	1.00	1.00	1.00	167,039	167,040
Director of Security	1.00	1.00	1.00	186,128	179,188
Director of Surveys	1.00	1.00	1.00	167,039	165,000
Director of Tenant Services & Operations	1.00	1.00	1.00	167,039	167,040
Director of Transportation Planning	1.00	1.00	1.00	167,039	167,040
Electrical Engineer	1.00	1.00	1.00	121,268	121,268
Electrical Supervisor	1.00	1.00	1.00	78,816	78,816
Electrician	3.00	4.00	4.00	260,118	260,118
Engineering Tech II	1.00	1.00	-	77,245	-
Environmental Remediation Specialist II	1.00	1.00	1.00	134,237	134,237
Environmental Specialist Assistant	3.00	3.00	-	248,401	-

Personnel Summary

Classification	FY 18 Adopt FTE	FY 19 Adopt FTE	FY 20 Adopt FTE	FY 19 Adopted Budget	FY 20 Adopted Budget
Environmental Specialist Associate	2.00	3.00	8.00	280,519	745,058
Environmental Specialist I	5.00	4.00	2.00	462,920	242,535
Environmental Specialist II	2.00	2.00	2.00	231,295	265,864
Equipment Mechanic I	-	1.00	3.00	64,769	188,902
Equipment Mechanic II	3.00	2.00	1.00	125,258	68,140
Equipment Operator III	5.00	5.00	4.00	282,827	226,017
Executive Officer to the Board	1.00	1.00	1.00	191,753	191,754
Executive Secretary - Harbor	4.00	4.00	4.00	309,060	326,543
Garage Service Attendant II	2.00	2.00	1.00	103,356	51,678
Garage Service Attendant I-NC	0.40	0.40	0.40	14,381	14,380
Garage Supervisor	1.00	1.00	1.00	93,079	96,129
Gardener II	2.00	2.00	2.00	103,356	93,771
General Maintenance Assistant	4.00	4.00	3.00	204,662	163,077
Geographic Information Systems Analyst II	3.00	3.00	3.00	268,899	268,899
Geographic Information Systems Analyst III	1.00	1.00	1.00	99,110	99,110
Geographic Information Systems Tech I	1.00	1.00	1.00	62,544	62,834
Geographic Information Systems Tech II	2.00	2.00	2.00	139,006	127,769
Harbor Control Center Supervisor	1.00	1.00	1.00	91,529	96,339
Harbor Maintenance Mechanic I	-	3.00	3.00	156,619	159,744
Harbor Maintenance Mechanic II	7.00	4.00	4.00	243,654	245,998
Harbor Marine Engineer	1.00	1.00	1.00	109,763	109,763
Intermodal Operations Coordinator	2.00	2.00	2.00	227,696	233,262
Intermodal Operations Manager	1.00	1.00	1.00	154,467	154,468
Maintenance Assistant I	8.00	8.00	8.00	320,674	311,897
Maintenance Assistant II	1.00	1.00	1.00	44,199	44,199
Maintenance Assistant III	6.00	6.00	7.00	283,075	330,085
Maintenance Assistant I-NC	1.50	1.50	1.50	51,790	51,787
Maintenance Planner I	-	1.00	1.00	66,086	69,508
Maintenance Planner II	3.00	3.00	3.00	235,164	227,472
Maintenance Supervisor	2.00	2.00	2.00	149,609	135,088
Manager of Accounting	1.00	1.00	1.00	140,994	140,994
Manager of Air Quality Practices	1.00	1.00	1.00	141,363	141,364
Manager of Business Applications	1.00	1.00	1.00	151,228	151,228
Manager of Business Development	1.00	1.00	1.00	133,163	133,164
Manager of Business Development-FTZ	1.00	1.00	1.00	133,163	133,164
Manager of CEQA/NEPA Projects	1.00	1.00	1.00	138,907	138,906
Manager of Commercial Trade - Import Cargo	1.00	1.00	1.00	133,163	133,164
Manager of Commercial Trade - Ocean Carriers	1.00	1.00	1.00	133,161	133,160
Manager of Contract Compliance	1.00	1.00	1.00	143,814	135,000
Manager of Cyber Information Security	1.00	1.00	1.00	153,875	153,875
Manager of Emergency Management	1.00	1.00	1.00	139,595	139,595
Manager of Engineering Technology	1.00	1.00	1.00	143,814	143,815
Manager of Environmental Remediation	1.00	1.00	1.00	141,425	141,623
Manager of Facilities Maintenance	1.00	1.00	1.00	133,163	133,164
Manager of Financial Planning & Analysis	1.00	1.00	1.00	147,905	147,906
Manager of Fleet/Utilities	1.00	1.00	1.00	133,163	130,000
Manager of Grants	-	-	1.00	-	135,000

Personnel Summary

Classification	FY 18 Adopt FTE	FY 19 Adopt FTE	FY 20 Adopt FTE	FY 19 Adopted Budget	FY 20 Adopted Budget
Manager of Grants Administration	1.00	1.00	1.00	133,163	133,164
Manager of Harbor Maintenance Administration	-	1.00	1.00	133,163	133,163
Manager of Harbor Marine	1.00	1.00	1.00	130,000	144,456
Manager of Infrastructure Maintenance	1.00	1.00	1.00	130,559	127,992
Manager of Labor Compliance Administration	1.00	1.00	1.00	133,161	133,160
Manager of Master Planning	1.00	1.00	1.00	137,700	143,350
Manager of Network Operations	1.00	1.00	1.00	153,875	150,000
Manager of Project Controls	1.00	1.00	1.00	151,439	151,438
Manager of Pump Station Supervisor	-	-	1.00	-	76,795
Manager of Safety/Business Continuity	1.00	1.00	1.00	141,427	141,427
Manager of Security Operations	2.00	2.00	2.00	271,653	268,164
Manager of Sustainable Practices	1.00	1.00	1.00	141,420	141,420
Manager of Technical Security	1.00	1.00	1.00	144,027	144,028
Manager of Transportation Planning	1.00	1.00	1.00	138,458	138,457
Manager of Water Quality	1.00	1.00	1.00	141,425	141,623
Managing Director	5.00	4.00	4.00	966,896	939,425
Marketing Manager	-	2.00	2.00	183,454	183,471
Mechanical Supervisor	1.00	1.00	1.00	89,359	89,359
Members - Boards / Commissions	-	-	-	26,000	26,000
Motor Sweeper Operator	1.00	1.00	1.00	60,046	61,215
Office Automation Analyst I	1.00	2.00	2.00	144,992	148,592
Office Automation Analyst II	2.00	1.00	2.00	80,804	146,881
Office Automation Analyst III	2.00	2.00	2.00	174,171	174,171
Office Automation Analyst IV	1.00	1.00	-	74,880	-
Office Services Assistant III	1.00	1.00	-	49,304	-
Office Systems Analyst I	2.00	1.00	-	101,530	-
Office Systems Analyst II	6.00	6.00	7.00	684,229	817,879
Office Systems Analyst III	11.00	14.00	14.00	1,769,987	1,730,189
Painter II	1.00	1.00	1.00	61,601	61,601
Painter Supervisor	1.00	1.00	1.00	71,919	71,919
Park Maintenance Supervisor	1.00	1.00	1.00	68,554	69,398
Payroll Personnel Assistant III	1.00	-	2.00	-	109,817
Plumber	6.00	6.00	6.00	414,479	414,479
Plumber Supervisor	1.00	1.00	1.00	78,816	78,816
Port Commercial Appraiser	1.00	1.00	1.00	121,306	121,306
Port Communications Specialist II	0.20	0.20	0.20	11,431	11,430
Port Communications Specialist III	4.00	3.00	4.00	242,886	298,257
Port Communications Specialist IV	3.00	4.00	3.00	310,744	234,799
Port Communications Specialist V	7.00	5.00	7.00	448,957	609,084
Port Financial Analyst I	-	1.00	-	82,893	-
Port Financial Analyst II	1.00	1.00	2.00	102,934	201,811
Port Financial Analyst III	3.00	3.00	4.00	347,776	429,766
Port Leasing Sales Officer I	1.00	1.00	1.00	63,152	64,413
Port Leasing Sales Officer V	3.00	4.00	4.00	428,515	428,515
Port Planner I	-	1.00	1.00	78,954	85,086

Personnel Summary

Classification	FY 18 Adopt FTE	FY 19 Adopt FTE	FY 20 Adopt FTE	FY 19 Adopted Budget	FY 20 Adopted Budget
Port Planner II	2.00	1.00	1.00	82,852	91,336
Port Planner III	2.00	1.00	-	107,474	-
Port Planner IV	1.00	2.00	3.00	226,300	348,499
Port Planner V	2.00	2.00	2.00	257,409	264,769
Port Risk Manager II	1.00	1.00	1.00	104,116	104,116
Port Security System Operator II	9.00	9.00	9.00	653,774	660,359
Port Security System Operator III	4.00	4.00	4.00	317,175	320,847
Port Security Systems Oper I-NC	2.00	-	-	-	-
Port Senior Crane Operator	2.00	-	-	-	-
Port Trade Analyst	1.00	1.00	2.00	94,041	208,232
Principal Construction Inspector	4.00	4.00	4.00	424,011	403,856
Project Budget Analyst	3.00	3.00	2.00	219,195	208,232
Project Scheduler I	1.00	1.00	1.00	107,266	107,266
Project Scheduler II	3.00	2.00	2.00	254,634	254,634
Records Center Supervisor II	1.00	1.00	1.00	73,051	73,051
Revenue Manager	1.00	1.00	1.00	133,163	133,164
Safety Specialist	-	2.00	2.00	195,609	203,061
Safety Specialist II	2.00	-	-	-	-
Secretary	10.00	8.00	7.00	437,472	388,122
Senior Accountant	1.00	1.00	1.00	91,743	78,831
Senior Civil Engineer	25.00	24.00	21.00	3,140,395	2,744,063
Senior Director of Design/Maintenance	1.00	-	-	-	-
Senior Director of Engineering Program Delivery	1.00	1.00	1.00	193,883	193,883
Senior Electrical Engineer	1.00	2.00	2.00	219,527	219,526
Senior Electrical Inspector	1.00	1.00	1.00	93,643	77,270
Senior Engineering Tech I	2.00	2.00	2.00	182,638	182,638
Senior Engineering Tech II	1.00	1.00	1.00	96,094	96,094
Senior Equipment Operator	1.00	2.00	2.00	140,917	143,255
Senior Estimator	-	1.00	-	124,725	-
Senior Port Leasing Officer	1.00	1.00	1.00	121,306	121,306
Senior Program Manager	5.00	5.00	5.00	743,019	743,019
Senior Scheduler	3.00	3.00	3.00	402,710	402,710
Senior Secretary	8.00	10.00	12.00	581,839	685,246
Senior Structural Engineer	1.00	1.00	1.00	140,758	140,758
Senior Survey Technician	5.00	6.00	5.00	506,659	400,879
Senior Surveyor	4.00	3.00	4.00	321,719	428,958
Senior Traffic Engineer	1.40	1.40	1.40	175,107	175,105
Special Assistant to the Executive Director	-	1.00	-	135,000	-
Special Services Officer II	5.00	5.00	5.00	308,764	307,302
Special Services Officer III	39.00	51.00	51.00	3,039,542	3,077,092
Special Services Officer II-NC	10.00	-	-	-	-
Special Services Officer IV	9.00	9.00	8.00	658,564	611,536
Stock & Receiving Clerk	1.00	1.00	1.00	38,896	42,296
Storekeeper I	-	-	1.00	-	48,983
Storekeeper II	1.00	1.00	-	48,899	-

Key Contacts

Mario Cordero, Executive Director

Rick Cameron, Deputy Executive Director, Planning & Development

Noel Hacegaba, Deputy Executive Director, Administration & Operations

Sam Joumblat, Managing Director, Finance & Administration Bureau

Sean Gamette, Managing Director, Engineering Services Bureau

Heather Tomley, Managing Director, Planning and Environmental Affairs Bureau

Don Snyder, Acting Managing Director, Commercial Operations Bureau

Duane Kenagy, Capital Programs Executive

Wei Chi, Director of Finance

415 W. Ocean Blvd.
Long Beach, CA 90802
Phone: (562) 283-7550
www.polb.com

