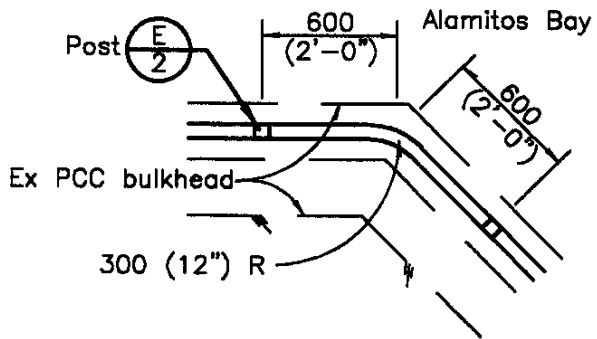
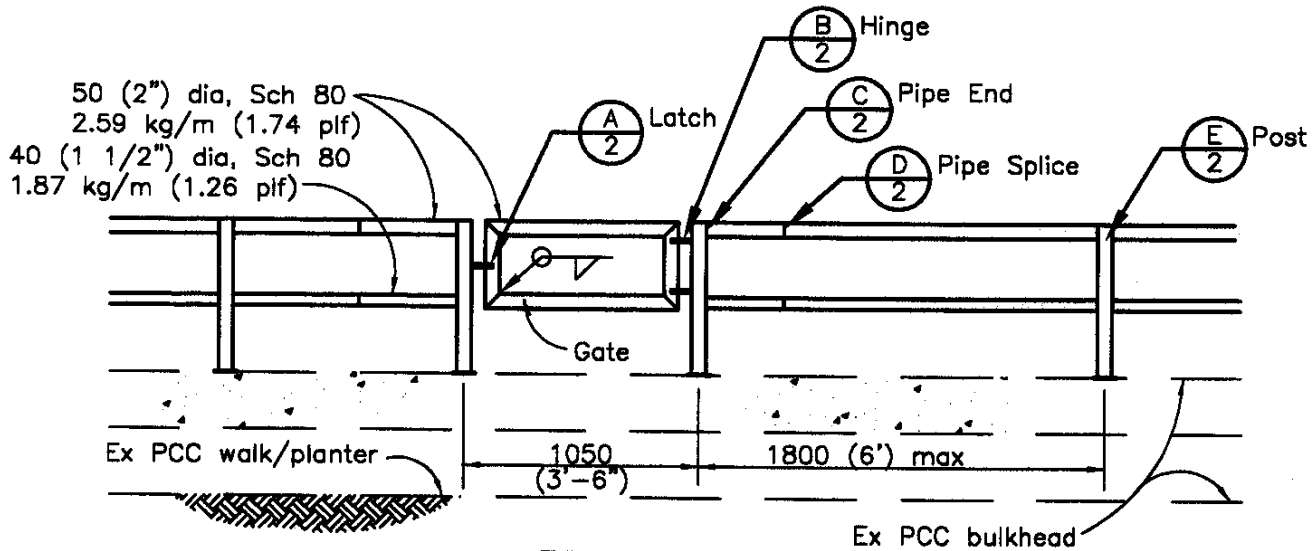


SECTION



**DETAIL AT BULKHEAD CORNER
PLAN VIEW**



TYPICAL ELEVATION

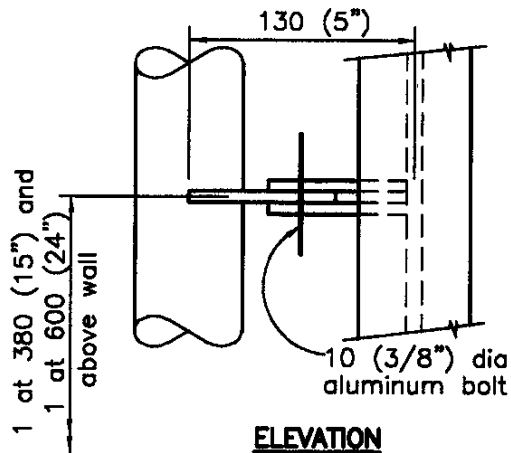
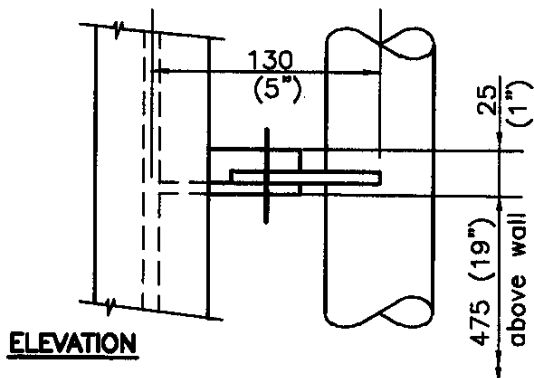
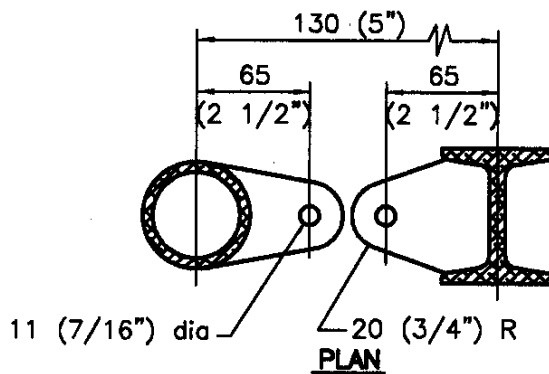
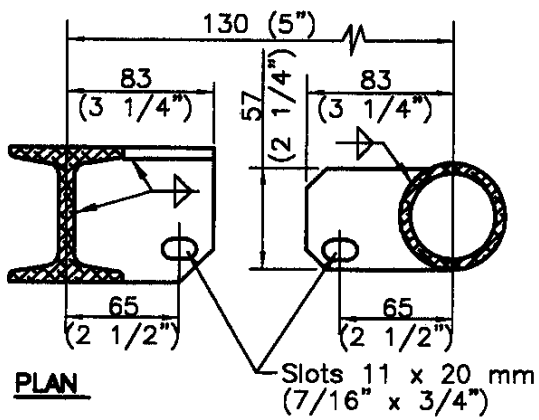
NOTES:

1. All handrail shall be aluminum, type 6063-T6, anodized after fabrication.
2. Aluminum shall be isolated from direct contact with concrete by fiber gaskets or approved coatings.
3. Gates shall be constructed to open landward.
4. Hinges, latches and post bases shall be 6 mm (1/4") aluminum plate. Posts may be weld fabricated, as shown.
5. Anodizing shall conform to Aluminum Association specification C22 and A42, Type 3, architectural Class I hard coat, 0.02 mm (0.7 mil) thick. Color shall match existing (ALCOA Duranodic Medium Bronze).

Ref: B-2202, Sht. 7

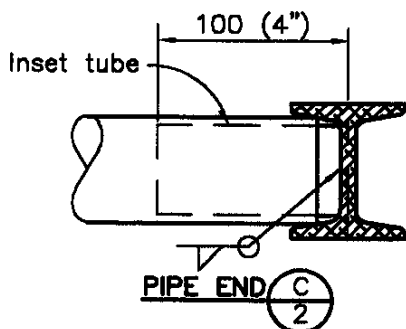
All dimensions are millimeters except as noted.

REVISIONS		CITY OF LONG BEACH, CALIFORNIA DEPARTMENT OF PUBLIC WORKS	STANDARD PLAN NO. METRIC 801
NO.	DATE		
1	05/06/98	NAPLES ISLAND BULKHEAD HANDRAIL	SHEET 1 OF 2
2	12/23/02		
3			
4			
APPROVED BY: <i>Mark Antifol</i>		DATE: 1/10/03	
CITY ENGINEER R.E. No. 40589		EX. DATE 03/31/03	

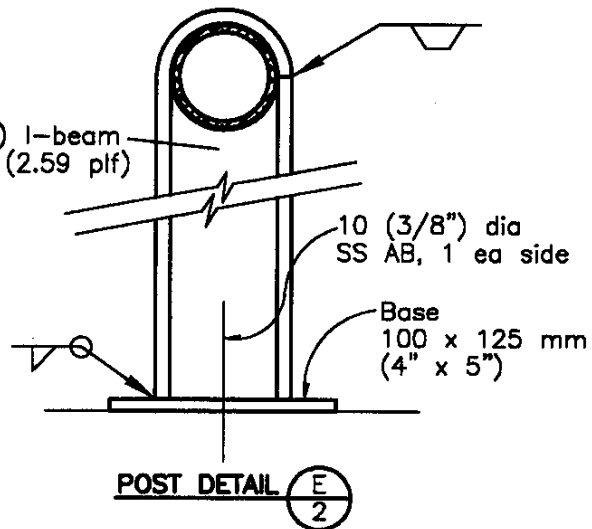
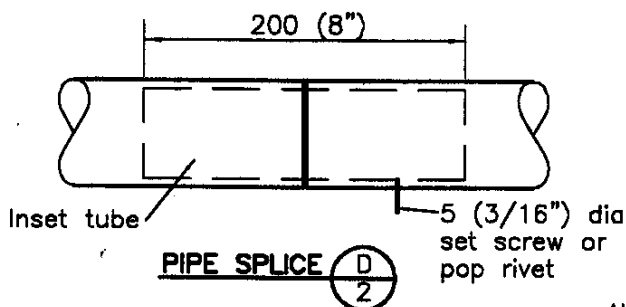


LATCH DETAIL (A/2)

HINGE DETAIL (B/2)



75 mm (3") I-beam
3.86 kg/m (2.59 plf)



All dimensions are in millimeters, except as noted

REVISIONS		CITY OF LONG BEACH, CALIFORNIA DEPARTMENT OF PUBLIC WORKS	STANDARD PLAN NO.
NO.	DATE		
1	05/06/98	NAPLES ISLAND BULKHEAD HANDRAIL	801
2	12/23/02		SHEET
3			2 OF 2
4			
APPROVED BY: <i>Max Christoffel</i>		DATE: <i>11/10/03</i>	
CITY ENGINEER R.E. No. <i>40599</i>		EX. DATE: <i>03/31/03</i>	