




City of Long Beach
Working Together to Serve

Memorandum

Date: July 11, 2017

To: Mayor and Members of the City Council

From: Patrick H. West, City Manager 

Subject: Invitation to "Party at The Cove"

You are cordially invited to an evening of celebrations hosted by the Long Beach Convention and Visitors Bureau to commemorate the latest additions to the Long Beach skyline on Thursday, July 20, 2017 at 5:30 p.m. The event will include celebrations for the iconic Rainbow Bridge connecting the Convention Center to the Terrace Theater; The Cove indoor/outdoor mezzanine space at the Convention Center; The Sonata mixed-use complex; and the latest Pow! Wow! Long Beach outdoor artistry. (See attached invitation.)

Please RSVP by Friday, July 14 to reply@longbeachcvb.org or call (562) 436-3645. Parking will be available in the Terrace Theater parking lot. Entrance to the event will be on the street level under the Terrace Theater outside the Seaside Ballroom.

Attachment

CC: Tom Modica, Assistant City Manager
Kevin Jackson, Deputy City Manager
Rebecca Jimenez, Assistant to the City Manager

A Special Invitation



Party at The Cove

Join us for an evening of celebrations.

We're launching our latest additions to Long Beach's skyline – The Cove's dynamic indoor/outdoor SoCal mezzanine; the iconic Rainbow Bridge; the groundbreaking of The Sonata, a new mixed-use complex and the completion of our newest Pow! Wow! Long Beach outdoor artistry.

Thursday, July 20, 2017 • 5:30-9:30 in the evening.

Guest Speaker Mayor Garcia

Local Food Truck Gastronomy • Drinks • DJ • Fun and Games

(Please, no backpacks, large bags/handbags)

Please RSVP by Friday, July 14

Click here or contact us at reply@longbeachcvb.org or call (562) 436-3645

Long Beach Convention & Entertainment Center

Long Beach Convention & Visitors Bureau

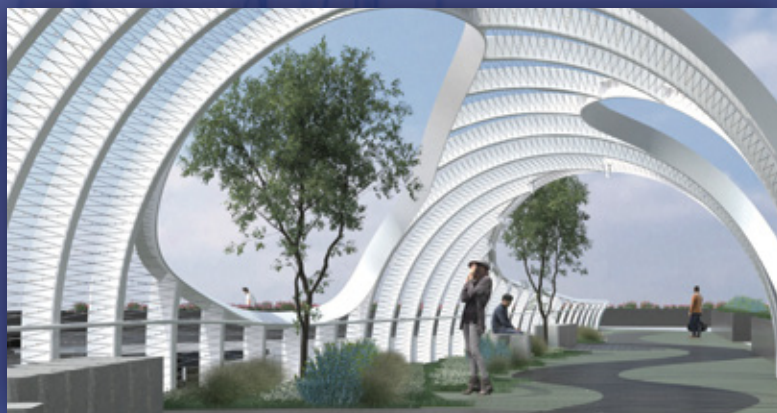
Pow! Wow! LONG BEACH

Mingle with the world-renowned artists of Pow! Wow! Long Beach and celebrate the culmination of Long Beach's newest gigantic outdoor murals.



Rainbow Bridge

The opening of our iconic, modern Rainbow Bridge now connects you from ocean view to city view – creating a vibrant walkway that's experiential magic.



The Sonata

A kick-off of the newest development project in the centerpiece of downtown, this 112 unit with 2,000 sq. ft. of retail, embraces our vibrant downtown lifestyle.

