



**long beach**  
**airport**

where the going is easy®

**Date:** June 18, 2021  
**To:** Thomas B. Modica, City Manager *TBM*  
**From:** Cynthia Guidry, Director, Long Beach Airport *CG*  
**For:** Mayor and Members of the City Council  
**Subject:** **Long Beach Airport Monthly Noise Report for April 2021**

---

Attached is the Long Beach Airport Monthly Noise Report for the month of April 2021.

If you have any questions or require additional information, please contact me at (562) 570-2605.

ATTACHMENT

CC: CHARLES PARKIN, CITY ATTORNEY  
LAURA L. DOUD, CITY AUDITOR  
DOUGLAS HAUBERT, CITY PROSECUTOR  
LINDA TATUM, ASSISTANT CITY MANAGER  
KEVIN J. JACKSON, DEPUTY CITY MANAGER  
TERESA CHANDLER, DEPUTY CITY MANAGER  
REBECCA GUZMAN GARNER, ADMINISTRATIVE DEPUTY CITY MANAGER

## Airport Advisory Commission

**Alvaro Castillo**  
Chair

**Wayne Chaney Sr.**  
Vice Chair

**Jeffrey Anderson**

**Christine Bos**

**Robert L. Duarte Jr.**

**Katie Larson**

**Rita Nayak**

**Miles Nevin**

**Geetanjali Reuben**



## Airport Management

**Cynthia Guidry**  
Director

**Juan López-Ríos**  
Deputy Airport Director

**Ken Mason**  
Executive Assistant

**Claudia Lewis**  
Manager of Administration  
& Finance

**Ron Reeves**  
Airport Operations & Facilities  
Manager

**Ambi Thurai**  
Engineering Officer

**Dale Worsham**  
Administrative Officer

**Karl Zittel**  
Airside Operations Officer

**Matthew Brookes**  
Airport Properties Officer

**Scott Garrett**  
Facilities Management Officer

**Mony Chhey**  
Financial Services Officer

**Scott Korobkin**  
Superintendent of Safety and  
Security

**Kate Kuykendall**  
Public Affairs Officer

**Ryan McMullan**  
Noise & Environmental Affairs  
Officer



# Long Beach Airport Monthly Noise Report April 2021

**COMMERCIAL AIRCRAFT LATE NIGHT ACTIVITY**  
**LGB Current Month & Calendar Year-To-Date Statistics (10 PM- 7AM)**  
**April 2021**

April				Calendar Year-To-Date		
10PM - 11PM Activity	2021	2020	Change	2021	2020	Change
<b>Air Carrier &amp; Commuter Operations</b>	<b>2,074</b>	<b>610</b>	<b>240.0%</b>	<b>6,524</b>	<b>8,792</b>	<b>-25.8%</b>
American/Mesa/SkyWest/Envoy	0	0		0	0	
Delta/SkyWest Airlines	3	0	100.0%	4	7	-42.9%
FedEx	0	0		0	0	
Hawaiian Airlines	0	0		1	1	0.0%
JetBlue Airways	0	0		0	21	-100.0%
Southwest Airlines	1	0	100.0%	2	0	100.0%
UPS	0	0		1	0	100.0%
<b>Subtotal 10PM-11PM</b>	<b>4</b>	<b>0</b>	<b>100.0%</b>	<b>8</b>	<b>29</b>	<b>-72.4%</b>
11PM- 7AM Activity	2021	2020	Change	2021	2020	Change
American/Mesa/SkyWest/Envoy	0	0		0	0	
Delta/SkyWest Airlines	0	0		0	0	
FedEx	0	0		0	0	
Hawaiian Airlines	0	0		0	2	-100.0%
JetBlue Airways	0	0		0	16	-100.0%
Southwest Airlines	0	0		0	0	
UPS	0	0		1	0	100.0%
<b>Subtotal 11PM-7AM</b>	<b>0</b>	<b>0</b>		<b>1</b>	<b>18</b>	<b>-94.4%</b>
<b>TOTAL</b>	<b>4</b>	<b>0</b>	<b>100.0%</b>	<b>9</b>	<b>47</b>	<b>-80.9%</b>

Notes:

0.2% (4 of 2,074) of total commercial operations occurred between 10pm - 7am.

0.1 flights - Nightly average for all late night (10:00 PM—7:00 AM) commercial flights, includes unanticipated delays.

0..0 flights - Nightly average for commercial flights after 11 PM.

<b>AIRPORT NOISE VIOLATIONS</b> <b>LGB Current Month &amp; Calendar Year-To-Date Statistics</b> <b>April 2021</b>						
April				Calendar Year-To-Date		
Air Carrier Noise Violations	2021	2020	Change	2021	2020	Change
American/Mesa/SkyWest/Envoy	0	0		0	0	
Delta/SkyWest Airlines	0	0		0	1	-100.0%
FedEx	0	0		0	0	
Hawaiian Airlines	0	0		0	2	-100.0%
JetBlue Airways	0	0		0	14	-100.0%
Southwest Airlines	0	0		0	0	
UPS	0	0		1	0	100.0%
<b>Subtotal</b>	<b>0</b>	<b>0</b>		<b>1</b>	<b>17</b>	<b>-94.1%</b>
Commuter Noise Violations	2021	2020	Change	2021	2020	Change
American/Mesa/SkyWest/Envoy	0	0		0	0	
Delta/SkyWest Airlines	0	0		0	0	
<b>Subtotal</b>	<b>0</b>	<b>0</b>		<b>0</b>	<b>0</b>	
Non-Commercial Noise Violations	2021	2020	Change	2021	2020	Change
All GA, Charter & Other	8	7	14.3%	34	36	-5.6%
<b>TOTAL</b>	<b>8</b>	<b>7</b>	<b>14.3%</b>	<b>35</b>	<b>53</b>	<b>-34.0%</b>
Monetary Fines	2021	2020		2021	2020	
Airport Surcharges	\$300	\$300		\$600	\$6,500	
Consent Decree	\$0	\$0		\$0	\$72,000	
<b>TOTAL</b>	<b>\$300</b>	<b>\$300</b>		<b>\$600</b>	<b>\$78,500</b>	

<b>AIRPORT OPERATIONS</b> <b>LGB Current Month &amp; Calendar Year-To-Date Statistics</b> <b>April 2021</b>						
April				Calendar Year-To-Date		
Airport Operations (FAA)	2021	2020	Change	2021	2020	Change
Air Carrier + Commuter Carriers	2,074	610	240.0%	6,524	8,792	-25.8%
Air Taxi + General Aviation	28,003	11,965	134.0%	101,958	78,440	30.0%
Military Operations	73	119	-38.7%	384	411	-6.6%
<b>Total Aircraft Operations</b>	<b>30,150</b>	<b>12,694</b>	<b>137.5%</b>	<b>108,866</b>	<b>87,643</b>	<b>24.2%</b>

Notes:

0.03% (8 of 30,077) of the Airport's total aircraft operations (Commercial & GA) resulted in an aircraft noise violation.

0.1% (0 of 2,074) of the Airport's Commercial operations (Commercial & Commuter) resulted in an aircraft noise violation.

# AIRCRAFT NOISE VIOLATORS

## April 2021

OWNERNAME	DATE	TIME	A/D	RWY	FLIGHT #	A/C TYPE	ORIG/DEST	SEL	LIMIT	STATUS
Private	4/5/2021	20:23:13	T	26R		P32R				VIO
Private	4/6/2021	23:18:39	A	30		PA44		82.7	79.0	VIO
Wilmington Trust Company Trustee	4/8/2021	6:02:41	D	26R		CL30				VIO
Wayne Mogg Inc.	4/12/2021	23:25:33	M	30		P28A				VIO
Private	4/18/2021	2:25:46	A	30		PA44		82.5	79.0	VIO
Evergreen Executive Holdings LLC	4/18/2021	5:35:24	A	30		GLF4		88.8	79.0	VIO
Four Brothers 2 LLC	4/20/2021	5:51:45	D	30		GLEX		83.1	79.0	VIO
D&I Transportation LLC	4/28/2021	6:48:00	D	30		BE18		92.8	90.0	VIO

### DEFINITIONS:

**A/C Type** — Aircraft Type

**A/D** — Arrival/Departure

**M** — Missed Approach

**RWY** — Runway

**SEL** — SENEL — Single Event Noise Exposure Level (dBA)

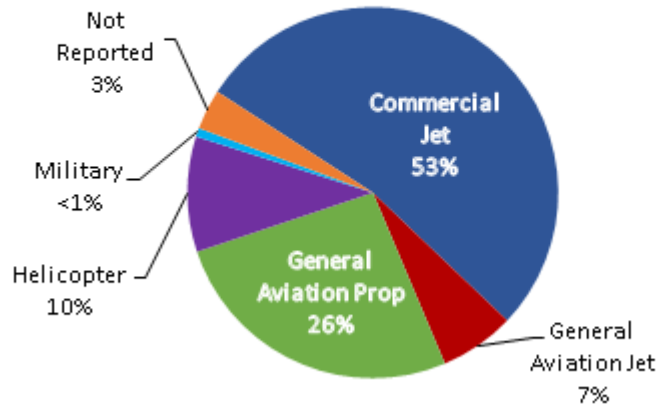
**T**—Touch and Go

**V**—Violation

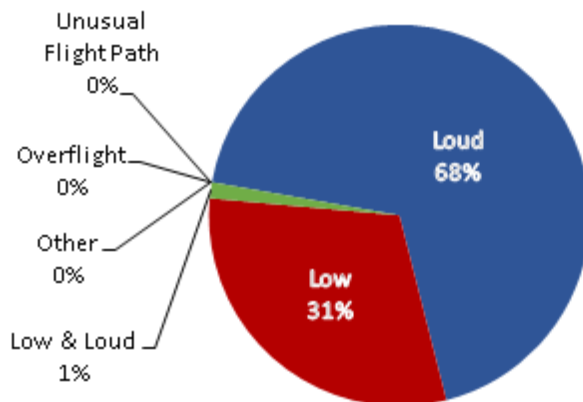
# LGB AIRCRAFT NOISE COMPLAINTS

April 2021

## Complaints by Aircraft Types



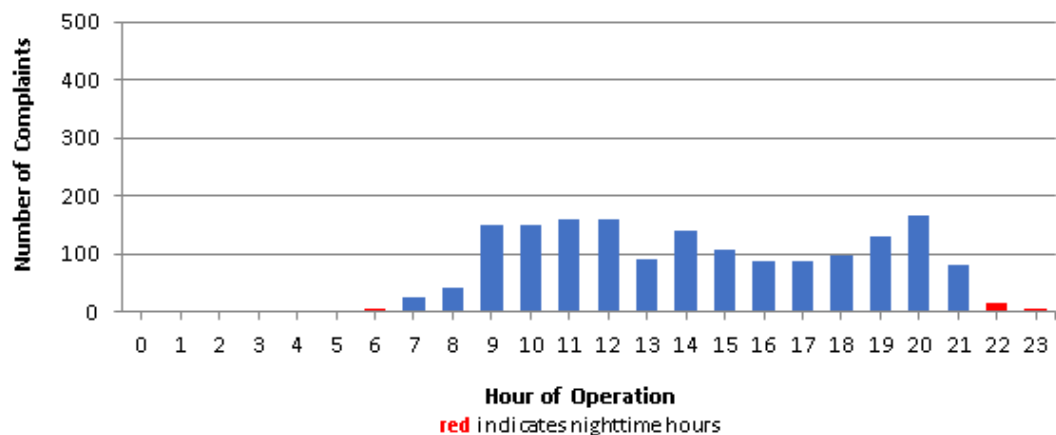
## Complaints by Concern



## Complaints by Zip Code

Zip Code	Complaints	Units
90242	9	1
90278	35	1
90505	1	1
90731	1	1
90746	16	1
90755	1	1
90804	9	1
90805	32	5
90807	129	19
90808	8	3
90815	9	6
91364	3	1
92612	135	1
92615	7	1
92626	426	2
92627	10	1
92646	27	1
92647	719	2
92648	100	10
92649	8	4
92653	5	1
92656	5	1
92660	6	1
92661	2	1
92676	4	1
92705	1	1
Not Reported	2	2
<b>Grand Total</b>	<b>1,710</b>	<b>71</b>

## Complaints by Time of Operation





# long beach airport



## Long Beach Airport

4100 E. Donald Douglas Drive, Long Beach, CA 90808

[www.lgb.org](http://www.lgb.org) • [lgbapt@longbeach.gov](mailto:lgbapt@longbeach.gov)

Administration • (562) 570-2619