

Airport Advisory Commission

Miles Nevin
Chair

Katie Larson
Vice Chair

Jeffrey Anderson

Christine Bos

Wayne Chaney Sr.

Robert L. Duarte Jr.

Mireya LaFarga

Geetanjali Reuben

Dede Rossi

Airport Management

Cynthia Guidry
Director

Juan López-Rios
Deputy Airport Director

Ken Mason
Executive Assistant

Claudia Lewis
Manager of Administration
& Finance

Ron Reeves
Airport Operations & Facilities
Manager

Stephan Lum
Acting Engineering Officer

Dale Worsham
Development Services Officer

Karl Zittel
Airside Operations Officer

Matthew Brookes
Airport Properties Officer

Scott Garrett
Facilities Management Officer

Mony Chhey
Financial Services Officer

Scott Korobkin
Superintendent of Safety and
Security

Kate Kuykendall
Public Affairs Officer

Ryan McMullan
Noise & Environmental Affairs
Officer



long beach
airport



Long Beach Airport Monthly Noise Report April 2022

COMMERCIAL AIRCRAFT LATE NIGHT ACTIVITY
LGB Current Month & Calendar Year-To-Date Statistics (10 PM- 7AM)
April 2022

April				Calendar Year-To-Date		
10PM - 11PM Activity	2022	2021	Change	2022	2021	Change
Air Carrier & Commuter Operations	2,638	2,074	27.2%	10,518	6,524	61.2%
American/Mesa/SkyWest/Envoy	0	0		0	0	
Delta/SkyWest Airlines	1	3	-66.7%	8	4	100.0%
Hawaiian Airlines	0	0		1	1	0.0%
Southwest Airlines	6	1	500.0%	12	2	500.0%
UPS	0	0		1	1	0.0%
Subtotal 10PM-11PM	7	4	75.0%	22	8	175.0%
11PM- 7AM Activity	2022	2021	Change	2022	2021	Change
American/Mesa/SkyWest/Envoy	0	0		0	0	
Delta/SkyWest Airlines	0	0		0	0	
Hawaiian Airlines	0	0		2	0	100.0%
Southwest Airlines	0	0		1	0	100.0%
UPS	0	0		0	1	-100.0%
Subtotal 11PM-7AM	0	0		3	1	200.0%
TOTAL	7	4	75.0%	25	9	177.8%

Notes:

0.03% (7 of 2,638) of total commercial operations occurred between 10pm - 7am.

0.02 flights - Nightly average for all late night (10:00 PM—7:00 AM) commercial flights, includes unanticipated delays.

0.0 flights - Nightly average for commercial flights after 11 PM.

AIRPORT NOISE VIOLATIONS						
LGB Current Month & Calendar Year-To-Date Statistics						
April 2022						
April				Calendar Year-To-Date		
Air Carrier Noise Violations	2022	2021	Change	2022	2021	Change
American/Mesa/SkyWest/Envoy	0	0		0	0	
Delta/SkyWest Airlines	0	0		0	0	
Hawaiian Airlines	0	0		1	0	100.0%
Southwest Airlines	0	0		0	0	
UPS	0	0		0	1	-100.0%
Subtotal	0	0		1	1	0.0%
Commuter Noise Violations	2022	2021	Change	2022	2021	Change
American/Mesa/SkyWest/Envoy	0	0		0	0	
Delta/SkyWest Airlines	0	0		0	0	
Subtotal	0	0		0	0	
Non-Commercial Noise Violations	2022	2021	Change	2022	2021	Change
All GA, Charter & Other	9	8	12.5%	25	34	-26.5%
TOTAL	9	8	12.5%	26	35	-25.7%
Monetary Fines	2022	2021		2022	2021	
Airport Surcharges	\$300	\$300		\$400	\$600	
Consent Decree	\$0	\$0		\$0	\$0	
TOTAL	\$300	\$300		\$400	\$600	

AIRPORT OPERATIONS						
LGB Current Month & Calendar Year-To-Date Statistics						
April 2022						
April				Calendar Year-To-Date		
Airport Operations (FAA)	2022	2021	Change	2022	2021	Change
Air Carrier + Commuter Carriers	2,638	2,074	27.2%	10,518	6,524	61.2%
Air Taxi + General Aviation	26,608	28,003	-5.0%	107,684	101,958	5.6%
Military Operations	98	73	34.2%	426	384	10.9%
Total Aircraft Operations	29,344	30,150	-2.7%	118,628	108,866	9.0%

Notes:

0.03% (9 of 29,344) of the Airport's total aircraft operations (Commercial & GA) resulted in an aircraft noise violation.

0.00% (0 of 2,638) of the Airport's Commercial operations (Commercial & Commuter) resulted in an aircraft noise violation.

AIRCRAFT NOISE VIOLATORS

April 2022

OWNERNAME	DATE	TIME	A/D	RWY	FLIGHT #	A/C TYPE	ORIG/DEST	SEL	LIMIT	STATUS
Private	4/2/2022	16:35:18	M	30		P28A		n/a	n/a	VIO
Private	4/7/2022	19:33:52	T	26L		C172		n/a	n/a	VIO
V1VR LLC	4/10/2022	1:29:24	A	12		FA10		89.5	79.0	VIO
Zero Gravity Corp	4/15/2022	14:30:07	D	30		B722		109.8	102.5	VIO
Unable Direct LLC	4/16/2022	10:18:00	D	26R		C170		94.1	92.0	VIO
Private	4/18/2022	5:47:32	D	30		BE58		82.2	79.0	VIO
Private	4/23/2022	14:40:06	T	26R		M7		94.8	92.0	VIO
Sling Rental Aviation	4/24/2022	15:06:22	T	26L		SLG2		n/a	n/a	VIO
Southern Airways Express, LLC	4/30/2022	6:41:20	A	30		C208		95.3	90.0	VIO

DEFINITIONS:

A/C Type — Aircraft Type

A/D — Arrival/Departure

M—Missed Approach Operation

RWY — Runway

SEL — SENEL — Single Event Noise Exposure Level (dBA)

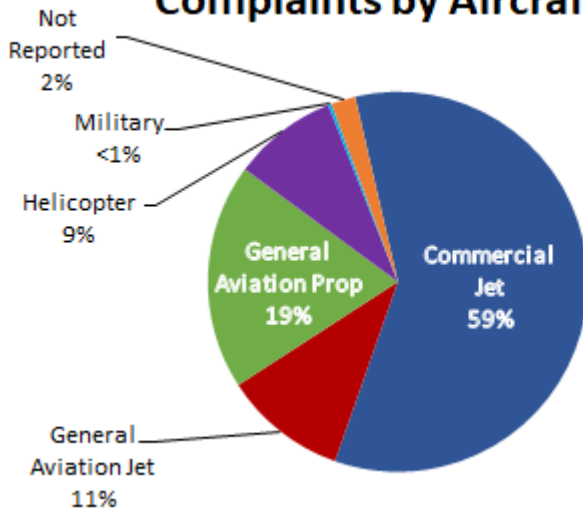
T—Touch and Go Operation

VIO —Violation

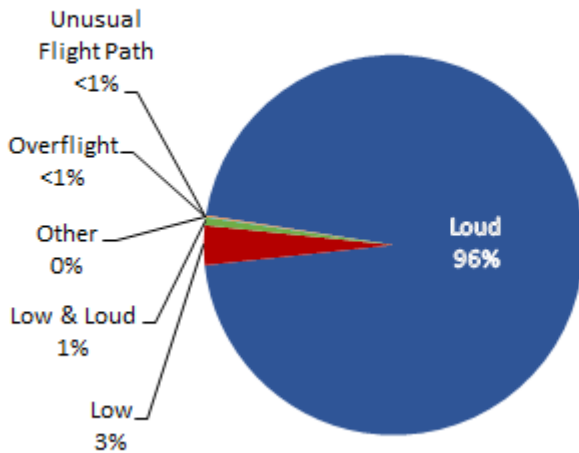
LGB AIRCRAFT NOISE COMPLAINTS

February 2022

Complaints by Aircraft Types



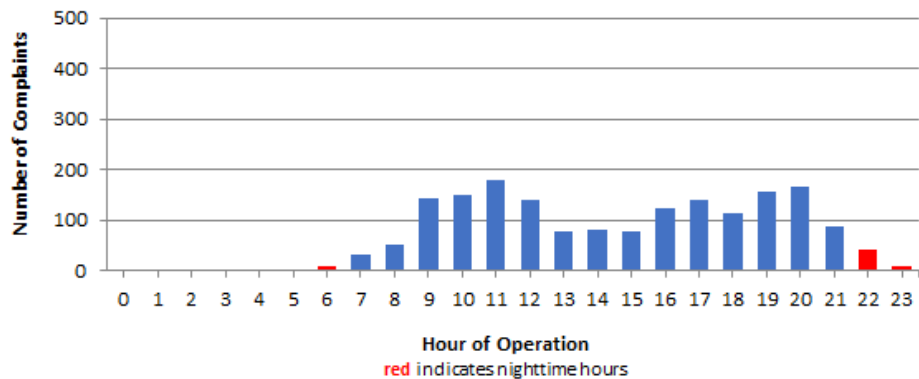
Complaints by Concern



Complaints by Zip Code

Zip Code	Complaints	Units
90242	7	1
90254	1	1
90278	42	1
90713	1	1
90732	1	1
90740	1	1
90746	19	3
90805	2	1
90807	74	18
90808	25	6
90815	2	2
91364	6	1
92626	424	1
92627	9	1
92646	2	1
92647	755	1
92648	388	11
92649	1	1
92651	1	1
92656	11	1
92660	1	1
92661	9	1
Grand Total	1,782	57

Complaints by Time of Operation





long beach airport



Long Beach Airport

4100 E. Donald Douglas Drive, Long Beach, CA 90808

www.lgb.org • lgbapt@longbeach.gov

Administration • (562) 570-2619