

Airport Advisory Commission

Katie Larson
Chair

Robert L. Allarte
Vice Chair

Christine Bos

Kenneth Brown

Wayne Chaney Sr.

Mireya LaFarga

Miles Nevin

Geetanjali Reuben

Dede Rossi

Airport Management

Cynthia Guidry
Director

Juan López-Rios
Deputy Airport Director

Ken Mason
Executive Assistant

Claudia Lewis
Manager of Administration
& Finance

Ron Reeves
Airport Operations & Facilities
Manager

Stephan Lum
Engineering Officer

Dale Worsham
Development Services Officer

Karl Zittel
Airside Operations Officer

Matthew Brookes
Airport Properties Officer

Scott Garrett
Facilities Management Officer

Mony Chhey
Financial Services Officer

Scott Korobkin
Superintendent of Safety and
Security

Kate Kuykendall
Public Affairs Officer

Ryan McMullan
Noise & Environmental Affairs
Officer



long beach
airport



Long Beach Airport Monthly Noise Report August 2022

COMMERCIAL AIRCRAFT LATE NIGHT ACTIVITY
LGB Current Month & Calendar Year-To-Date Statistics (10 PM- 7AM)
August 2022

August				Calendar Year-To-Date		
10PM - 11PM Activity	2022	2021	Change	2022	2021	Change
Air Carrier & Commuter Operations	2,659	2,172	22.4%	21,212	15,113	40.4%
American/Mesa/SkyWest/Envoy	0	0		0	2	-100.0%
Delta/SkyWest Airlines	2	2	0.0%	22	11	100.0%
Hawaiian Airlines	0	1	-100.0%	2	3	-33.3%
Southwest Airlines	12	8	50.0%	33	29	13.8%
UPS	0	0		1	1	0.0%
Subtotal 10PM-11PM	14	11	27.3%	58	46	26.1%
11PM- 7AM Activity				2022	2021	Change
American/Mesa/SkyWest/Envoy	0	0		0	0	
Delta/SkyWest Airlines	0	0		1	0	100.0%
Hawaiian Airlines	0	0		2	0	100.0%
Southwest Airlines	1	0	100.0%	3	2	50.0%
UPS	0	0		0	1	-100.0%
Subtotal 11PM-7AM	1	0	100.0%	6	3	100.0%
TOTAL	15	11	36.4%	64	49	30.6%

Notes:

0.6% (15 of 2,659) of total commercial operations occurred between 10pm - 7am.

0.5 flights - Nightly average for all late night (10:00 PM—7:00 AM) commercial flights, includes unanticipated delays.

0.03 flights - Nightly average for commercial flights after 11 PM.

AIRPORT NOISE VIOLATIONS						
LGB Current Month & Calendar Year-To-Date Statistics						
August 2022						
August				Calendar Year-To-Date		
Air Carrier Noise Violations	2022	2021	Change	2022	2021	Change
American/Mesa/SkyWest/Envoy	0	0		0	0	
Delta/SkyWest Airlines	0	0		0	0	
Hawaiian Airlines	0	0		1	0	100.0%
Southwest Airlines	0	0		0	1	-100.0%
UPS	0	0		0	1	-100.0%
Subtotal	0	0		1	2	-50.0%
Commuter Noise Violations	2022	2021	Change	2022	2021	Change
American/Mesa/SkyWest/Envoy	0	0		0	0	
Delta/SkyWest Airlines	0	0		0	0	
Subtotal	0	0		0	0	
Non-Commercial Noise Violations	2022	2021	Change	2022	2021	Change
All GA, Charter & Other	3	9	-66.7%	52	98	-46.9%
TOTAL	3	9	-66.7%	53	100	-47.0%
Monetary Fines				2022	2021	
Airport Surcharges	\$0	\$400		\$400	\$2,700	
Consent Decree	\$0	\$0		\$0	\$0	
TOTAL	\$0	\$400		\$400	\$2,700	

AIRPORT OPERATIONS						
LGB Current Month & Calendar Year-To-Date Statistics						
August 2022						
August				Calendar Year-To-Date		
Airport Operations (FAA)	2022	2021	Change	2022	2021	Change
Air Carrier + Commuter Carriers	2,659	2,172	22.4%	21,212	15,113	40.4%
Air Taxi + General Aviation	29,367	29,792	-1.4%	203,408	217,423	-6.4%
Military Operations	92	124	-25.8%	753	840	-10.4%
Total Aircraft Operations	32,118	32,088	0.1%	225,373	233,376	-3.4%

Notes:

0.01% (3 of 32,026) of the Airport's total aircraft operations (Commercial & GA) resulted in an aircraft noise violation.
0.00% (0 of 2,659) of the Airport's Commercial operations (Commercial & Commuter) resulted in an aircraft noise violation.

AIRCRAFT NOISE VIOLATORS

August 2022

OWNERNAME	DATE	TIME	A/D	RWY	FLIGHT #	A/C TYPE	ORIG/DEST	SEL	LIMIT	STATUS
124 North LLC	8/5/2022	11:33:40	A	26R		PC12		91.8	88.0	VIO
BIZAV Aircraft Management LLC	8/12/2022	22:25:30	D	30		GALX		94.3	90.0	VIO
A & E Hawker LP	8/18/2022	14:50:40	A	26R		BE40		90.8	88.0	VIO

DEFINITIONS:

A/C Type — Aircraft Type

A/D — Arrival/Departure

RWY — Runway

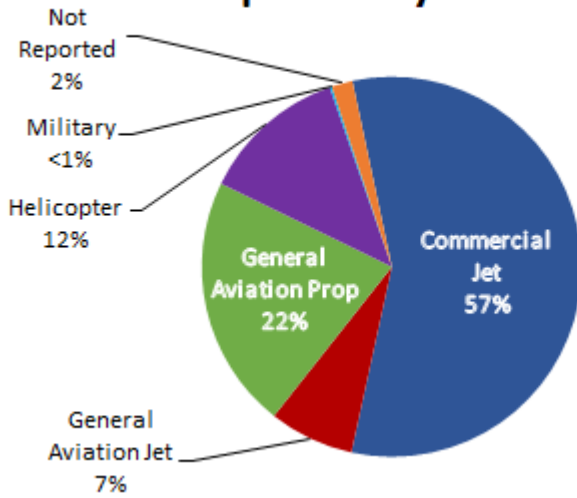
SEL — SENEL — Single Event Noise Exposure Level (dBA)

VIO — Violation

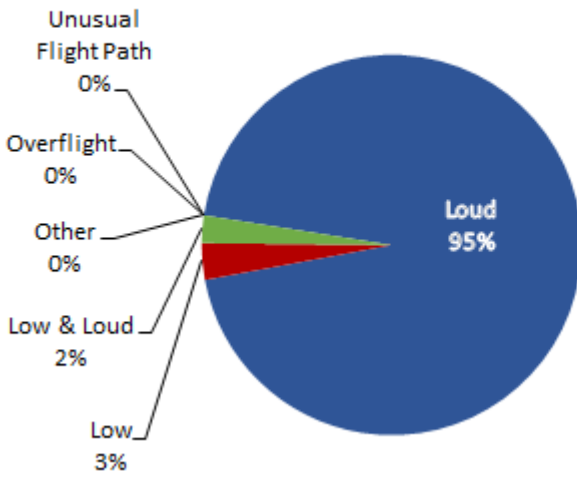
LGB AIRCRAFT NOISE COMPLAINTS

August 2022

Complaints by Aircraft Types



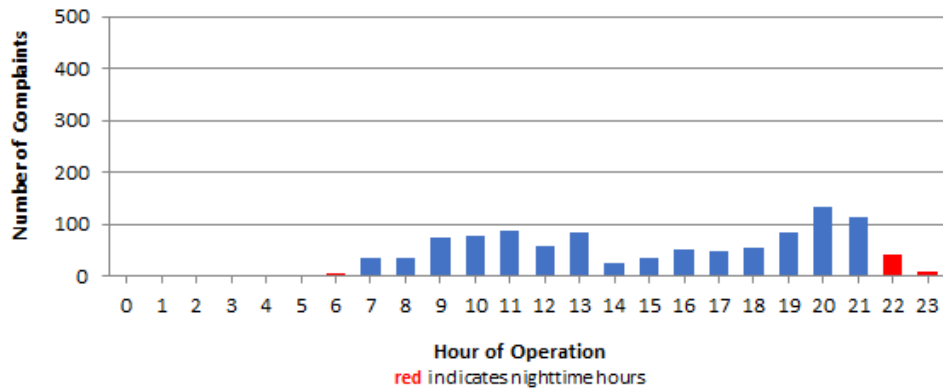
Complaints by Concern



Complaints by Zip Code

Zip Code	Complaints	Units
90242	41	1
90254	4	1
90277	3	1
90278	84	2
90712	1	1
90746	3	1
90755	3	1
90803	2	2
90805	1	1
90807	64	14
90808	56	1
90813	1	1
90815	5	2
91364	1	1
92626	279	1
92627	2	1
92647	324	1
92648	133	9
92649	35	3
92651	9	1
92660	2	1
92661	8	1
92677	1	1
Not Reported	4	3
Grand Total	1,066	52

Complaints by Time of Operation





long beach airport



Long Beach Airport

4100 E. Donald Douglas Drive, Long Beach, CA 90808

www.lgb.org • lgbapt@longbeach.gov

Administration • (562) 570-2619