

Airport Advisory Commission

Katie Larson
Chair

Robert L. Allarte
Vice Chair

Kenneth Brown

Wayne Chaney Sr.

Mireya LaFarga

Miles Nevin

Geetanjali Reuben

Dede Rossi

Airport Management

Cynthia Guidry
Director

Juan López-Rios
Deputy Airport Director

Ken Mason
Executive Assistant

Claudia Lewis
Manager of Administration &
Finance

Ron Reeves
Airport Operations & Facilities
Manager

Stephan Lum
Engineering Officer

Dale Worsham
Development Services Officer

Karl Zittel
Airside Operations Officer

Terry Ward
Operations Liaison Officer

Matthew Brookes
Airport Properties Officer

Scott Garrett
Facilities Management Officer

Mony Chhey
Financial Services Officer

Scott Korobkin
Superintendent of Safety & Security

Kate Kuykendall
Public Affairs Officer

Ryan McMullan
Noise & Environmental Affairs Officer



long beach
airport



Long Beach Airport Monthly Noise Report January 2023

COMMERCIAL AIRCRAFT LATE NIGHT ACTIVITY
LGB Current Month & Calendar Year-To-Date Statistics (10 PM- 7AM)
January 2023

January				Calendar Year-To-Date		
10PM - 11PM Activity	2023	2022	Change	2023	2022	Change
Air Carrier & Commuter Operations	2,846	2,769	2.8%	2,846	2,769	2.8%
American/Mesa/SkyWest/Envoy	0	0		0	0	0
Delta/SkyWest Airlines	4	1	300.0%	4	1	300.0%
Hawaiian Airlines	0	1	-100.0%	0	1	-100.0%
Southwest Airlines	3	4	-25.0%	3	4	-25.0%
UPS	0	0		0	0	
Subtotal 10PM-11PM	7	6	16.7%	7	6	16.7%
11PM- 7AM Activity	2023	2022	Change	2023	2022	Change
American/Mesa/SkyWest/Envoy	0	0		0	0	
Delta/SkyWest Airlines	0	0		0	0	
Hawaiian Airlines	0	2	-100.0%	0	2	-100.0%
Southwest Airlines	0	0		0	0	
UPS	1	0	100.0%	1	0	100.0%
Subtotal 11PM-7AM	1	2	-50.0%	1	2	-50.0%
TOTAL	8	8	0.0%	8	8	0.0%

Notes:

0.3% (8 of 2,846) of total commercial operations occurred between 10pm - 7am.

0.3 flights - Nightly average for all late night (10:00 PM—7:00 AM) commercial flights, includes unanticipated delays.

0.03 flights - Nightly average for commercial flights after 11 PM.

AIRPORT NOISE VIOLATIONS						
LGB Current Month & Calendar Year-To-Date Statistics						
January 2023						
January				Calendar Year-To-Date		
Air Carrier Noise Violations	2023	2022	Change	2023	2022	Change
American/Mesa/SkyWest/Envoy	0	0		0	0	
Delta/SkyWest Airlines	0	0		0	0	
Hawaiian Airlines	0	1	-100.0%	0	1	-100.0%
Southwest Airlines	0	0		0	0	
UPS	1	0	100.0%	1	0	100.0%
Subtotal	1	1	0.0%	1	1	0.0%
Commuter Noise Violations	2023	2022	Change	2023	2022	Change
American/Mesa/SkyWest/Envoy	0	0		0	0	
Delta/SkyWest Airlines	0	0		0	0	
Subtotal	0	0		0	0	
Non-Commercial Noise Violations	2023	2022	Change	2023	2022	Change
All GA, Charter & Other	11	3	266.7%	11	3	266.7%
TOTAL	12	4	200.0%	12	4	200.0%
Monetary Fines		2023	2022	2023	2022	
Airport Surcharges		\$200	\$100	\$200	\$100	
Consent Decree		\$0	\$0	\$0	\$0	
TOTAL		\$200	\$100	\$200	\$100	

AIRPORT OPERATIONS						
LGB Current Month & Calendar Year-To-Date Statistics						
January 2023						
January				Calendar Year-To-Date		
Airport Operations (FAA)	2023	2022	Change	2023	2022	Change
Air Carrier + Commuter Carriers	2,846	2,769	2.8%	2,846	2,769	2.8%
Air Taxi + General Aviation	22,843	23,293	-1.9%	22,843	23,293	-1.9%
Military Operations	61	104	-41.3%	61	104	-41.3%
Total Aircraft Operations	25,750	26,166	-1.6%	25,750	26,166	-1.6%

Notes:

0.05% (12 of 25,750) of the Airport's total aircraft operations (Commercial & GA) resulted in an aircraft noise violation.

0.04% (1 of 2,846) of the Airport's Commercial operations (Commercial & Commuter) resulted in an aircraft noise violation.

AIRCRAFT NOISE VIOLATORS

January 2023

OWNERNAME	DATE	TIME	A/D	RWY	FLIGHT #	A/C TYPE	ORIG/DEST	SEL	LIMIT	STATUS
Central Valley Development LLC	1/7/2023	23:34:45	D	30		C550		86.6	79.0	VIO
Skyservice Business Aviation Inc.	1/9/2023	0:22:18	A	30		GLFV		86.7	79.0	VIO
Private	1/11/2023	19:09:58	T	26L		C172		n/a	n/a	VIO
Boeing Co.	1/11/2023	22:49:32	A	30		B737		93.7	90.0	VIO
Four Brothers 2 LLC	1/12/2023	0:21:04	A	30		GALX		88.4	79.0	VIO
Handshake Management LLC	1/15/2023	5:28:57	A	30		F2TH		91.2	79.0	VIO
Cirrus Design Corp	1/15/2023	10:16:40	T	26R		SR22		96.3	92.0	VIO
Targaryen LLC	1/19/2023	23:37:53	A	30		PC12		90.6	79.0	VIO
Excelsis LLC	1/21/2023	0:13:25	A	30		F2TH		86.0	79.0	VIO
Private	1/22/2023	23:15:20	A	30		TB21		81.6	79.0	VIO
UPS	1/26/2023	4:52:15	A	30	UPS918	B763	SDF	93.9	79.0	VIO
Pac EL Technology Inc	1/31/2023	9:37:25	T	26R		P210		94.1	92.0	VIO

DEFINITIONS:

A/C Type — Aircraft Type

A/D — Arrival/Departure

RWY — Runway

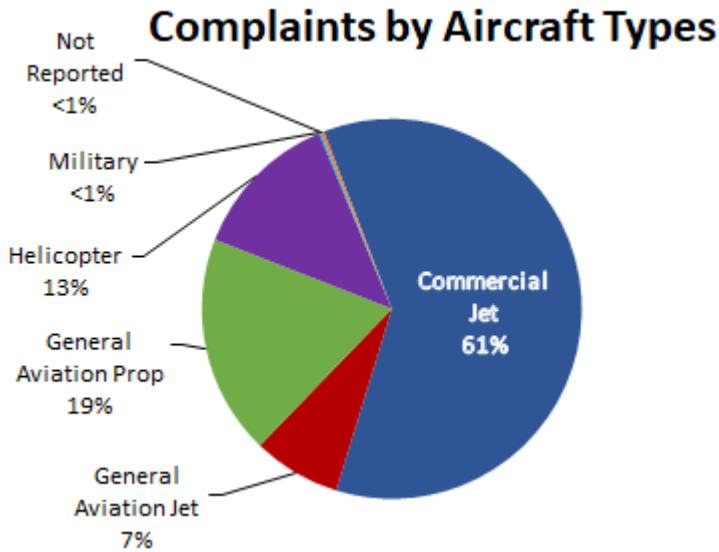
SEL — SENEL — Single Event Noise Exposure Level (dBA)

T—Touch and Go Operation

VIO —Violation

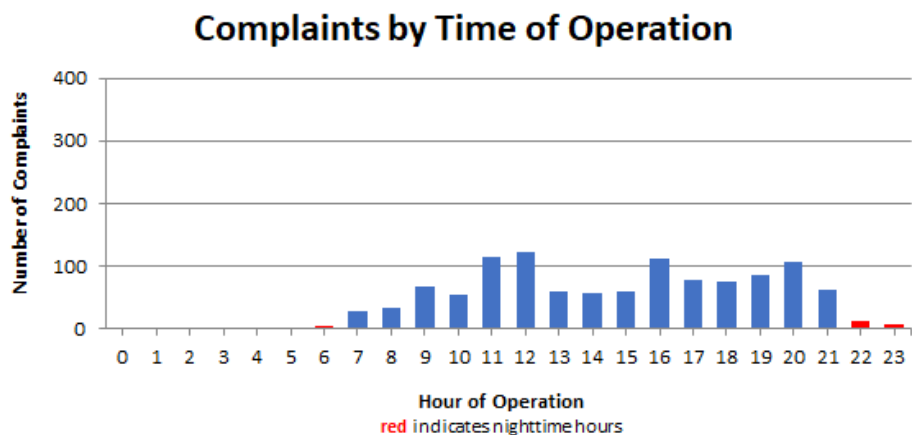
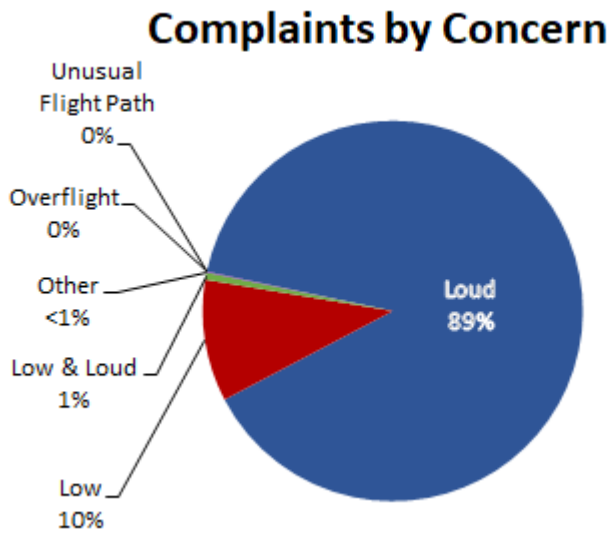
LGB AIRCRAFT NOISE COMPLAINTS

January 2023



Complaints by Zip Code

Zip Code	Complaints	Units
90242	56	1
90254	1	1
90278	7	1
90505	1	1
90731	1	1
90740	6	1
90755	1	1
90805	4	1
90807	41	7
90808	15	3
90815	7	2
92626	399	2
92647	531	3
92648	56	4
92649	11	1
92651	3	1
92660	3	1
92677	4	1
92705	1	1
Not Reported	1	1
Grand Total	1,149	35





long beach airport



Long Beach Airport

4100 E. Donald Douglas Drive, Long Beach, CA 90808

www.lgb.org • lgbapt@longbeach.gov

Administration • (562) 570-2619