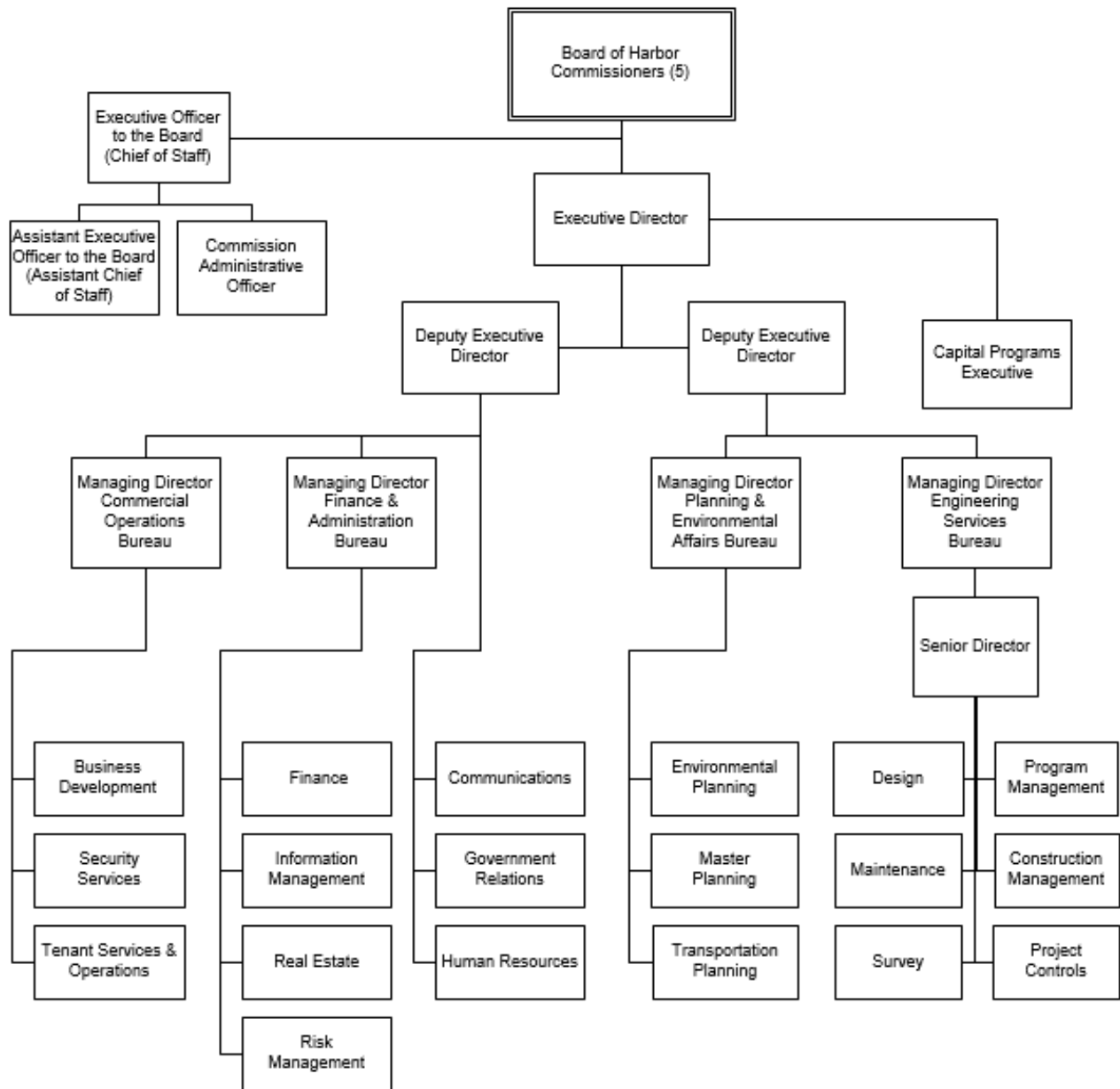


Harbor



Mission Statement

The Port of Long Beach is an international gateway for the reliable, efficient and sustainable movement of goods for the benefit of our local and global economies.

Financial Summary

	Actual FY 19	Adopted* FY 20	Adjusted** FY 20	Adopted* FY 21
Revenues:				
Property Taxes	-	-	-	-
Sales and Use Taxes	-	-	-	-
Other Taxes	-	-	-	-
Utility Users Tax	-	-	-	-
Franchise Fees	-	-	-	-
Licenses, Permits and Fees	63,111	-	-	-
Fines and Forfeitures	-	-	-	-
Use of Money & Property	47,045,170	44,610,997	44,610,997	35,540,000
Revenue from Other Agencies	82,416,516	59,448,000	59,448,000	37,728,000
Charges for Services	382,641,479	372,354,201	372,354,201	359,118,000
Other Revenues	3,814,408	21,000,000	21,000,000	2,136,425
Intrafund Services	156,883	-	2,827,500	-
Intrafund Transfers	(181,091,145)	-	-	-
Interfund Services	-	-	-	-
Interfund Transfers	-	-	-	-
Other Financing Sources	-	48,430,000	48,430,000	-
Total Revenues	335,046,422	545,843,198	548,670,698	434,522,425
Expenditures:				
Salaries and Wages	47,890,333	56,009,117	12,447,076	56,944,972
Employee Benefits	24,588,636	30,475,633	13,028,137	32,924,167
Overtime	2,270,168	1,576,064	(1,109,384)	1,669,109
Materials, Supplies and Services	348,470,358	63,121,119	(292,687,419)	63,489,622
Interfund Support	34,244,513	36,051,436	32,413,877	36,199,694
Intrafund Support	-	-	-	-
Capital Purchases	9,488,985	377,473,228	1,881,001,415	366,505,334
Insurance Premiums and Losses	418,008	321,000	16,000	226,000
Other Non-Operational Expenditures	49,240,624	89,408,000	89,408,000	70,335,400
Operating Transfers	20,961,781	20,135,600	8,807,798	18,809,414
Intrafund Transfers Out	(181,091,145)	-	-	-
Purchase of Gas & Water	-	-	(31,144)	-
Depreciation and Non Cash Expenditures	-	-	-	-
Total Expenditures	356,482,262	674,571,197	1,743,294,355	647,103,713
Personnel (Full-time Equivalents)	593.50	593.50	593.50	595.60

* Amounts exclude all-years carryover. See budget ordinance in the back of this document.

**Adjusted Budget as of August 31, 2020

Note: With the conversion to the new financial system, the amounts and character categories have been updated to match the revised Chart of Accounts in the system. The City is still going through a stabilization period with the new system and future reports may have further adjustments.

Personnel Summary

	FY 19 Adopt FTE	FY 20 Adopt FTE	FY 21 Adopt FTE	FY 20 Adopted Budget	FY 21 Adopted Budget
Executive Director	1.00	1.00	1.00	351,346	351,346
Accountant I	-	1.00	1.00	64,426	67,715
Accountant II	1.00	1.00	1.00	76,780	76,780
Accountant III	1.00	1.00	1.00	82,529	86,760
Accounting Clerk II	1.00	1.00	1.00	50,290	50,290
Accounting Clerk III	1.00	1.00	1.00	54,097	54,097
Accounting Technician	4.00	3.00	3.00	180,523	180,523
Administrative Aide I	5.00	5.00	2.00	276,589	116,529
Administrative Aide II	7.00	7.00	10.00	423,722	578,855
Administrative Analyst I	9.00	10.00	10.00	759,299	797,459
Administrative Analyst II	4.00	5.00	9.00	439,717	749,444
Administrative Analyst III	14.00	12.00	15.00	1,142,963	1,420,932
Administrative Analyst II-NC	0.50	-	-	-	-
Administrative Intern-NC/H43	10.50	9.00	8.50	439,351	414,897
Assistant Administrative Analyst I	2.00	2.00	1.00	124,272	62,945
Assistant Administrative Analyst II	13.00	14.00	13.00	968,065	884,094
Assistant Director of Business Development	1.00	1.00	1.00	149,141	149,141
Assistant Director of Communications	1.00	1.00	1.00	145,000	145,559
Assistant Director of Construction Management	1.00	1.00	1.00	164,411	164,411
Assistant Director of Engineering Design	1.00	1.00	1.00	165,000	165,635
Assistant Director of Environmental Planning	1.00	1.00	1.00	149,899	149,899
Assistant Director of Finance	1.00	1.00	1.00	160,000	160,617
Assistant Director of Homeland Security	1.00	1.00	1.00	160,000	159,790
Assistant Director of Human Resources	1.00	1.00	1.00	149,495	149,495
Assistant Director of Information Management	1.00	1.00	1.00	160,615	160,615
Assistant Director of Program Management	1.00	1.00	1.00	153,000	153,000
Assistant Director of Real Estate	1.00	1.00	1.00	145,000	148,570
Assistant Director of Security Support	1.00	1.00	1.00	159,793	159,793
Assistant Executive Officer to the Board	1.00	1.00	1.00	127,992	127,992
Assistant Marketing Manager III	2.00	2.00	2.00	177,361	161,729
Assistant Terminal Services Manager	1.00	1.00	-	87,085	-
Assistant to the Executive Director	1.00	1.00	1.00	96,353	96,353
Building Maintenance Engineer	3.00	3.00	3.00	237,658	252,107
Business Development Analyst	1.00	2.00	2.00	208,232	182,508
Capital Programs Executive	1.00	1.00	1.00	296,135	296,135
Capital Projects Coordinator II	1.00	2.00	2.00	172,131	172,140
Capital Projects Coordinator III	4.00	3.00	3.00	297,943	304,694
Capital Projects Coordinator IV	3.00	5.00	5.00	626,741	654,011
Carpenter	1.00	1.00	1.00	64,769	58,270
Chief Construction Inspector	1.00	1.00	1.00	121,488	124,954
Chief Surveyor	1.00	1.00	1.00	126,906	133,282
Chief Wharfinger	1.00	1.00	-	109,560	-
Civil Engineer	12.00	14.00	14.00	1,536,451	1,573,124
Civil Engineering Assistant	6.00	7.00	7.00	557,481	558,209

Personnel Summary

Classification	FY 19 Adopt FTE	FY 20 Adopt FTE	FY 21 Adopt FTE	FY 20 Adopted Budget	FY 21 Adopted Budget
Civil Engineering Associate	13.00	13.00	13.00	1,278,126	1,285,224
Clerk Typist II	2.00	1.00	-	47,476	-
Clerk Typist III	15.00	12.00	12.00	619,311	611,439
Clerk Typist III-NC	1.00	-	-	-	-
Clerk Typist IV	1.00	1.00	1.00	55,446	55,446
Commercial Diver II	6.00	6.00	6.00	541,058	590,223
Commission Administrative Officer	1.00	1.00	1.00	98,002	98,136
Communications Officer	5.00	5.00	5.00	523,504	523,504
Community Program Specialist III	-	1.00	-	72,808	-
Construction Inspector I	1.00	1.00	1.00	75,303	83,267
Construction Inspector II	13.00	13.00	13.00	1,225,555	1,196,101
Construction Supervisor	1.00	1.00	1.00	62,846	76,780
Contract Compliance Analyst III	1.00	1.00	1.00	94,436	99,389
Deputy Chief Harbor Engineer II	9.00	9.00	9.00	1,315,363	1,350,465
Deputy Executive Director	1.00	2.00	2.00	532,064	532,064
Director of Business Development	1.00	1.00	1.00	170,447	175,000
Director of Communications	1.00	1.00	1.00	177,090	177,090
Director of Construction Management	1.00	1.00	1.00	176,117	176,117
Director of Engineering Design	1.00	1.00	1.00	172,832	172,832
Director of Environmental Planning	1.00	1.00	1.00	167,039	164,889
Director of Finance	1.00	1.00	1.00	180,000	180,691
Director of Government Relations	1.00	1.00	1.00	167,000	179,700
Director of Human Resources	1.00	1.00	1.00	170,448	178,971
Director of Information Management	1.00	1.00	1.00	181,101	181,101
Director of Maintenance	1.00	1.00	1.00	172,832	172,832
Director of Master Planning	1.00	1.00	1.00	167,040	167,040
Director of Program Management	1.00	1.00	1.00	170,448	170,448
Director of Project Controls	1.00	1.00	1.00	168,948	168,948
Director of Real Estate	1.00	1.00	1.00	164,054	167,643
Director of Risk Management	1.00	1.00	1.00	167,040	167,040
Director of Security	1.00	1.00	1.00	179,188	179,188
Director of Survey	1.00	1.00	1.00	165,000	170,654
Director of Tenant Services & Operations	1.00	1.00	1.00	167,040	167,040
Director of Transportation Planning	1.00	1.00	1.00	167,040	167,040
Electrical Engineer	1.00	1.00	2.00	121,268	198,233
Electrical Supervisor	1.00	1.00	1.00	78,816	80,904
Electrician	4.00	4.00	4.00	260,118	288,872
Engineering Tech II	1.00	-	-	-	-
Environmental Remediation Specialist II	1.00	1.00	1.00	134,237	134,237
Environmental Specialist Assistant	3.00	-	-	-	-
Environmental Specialist Associate	3.00	8.00	8.00	745,058	757,228
Environmental Specialist I	4.00	2.00	2.00	242,535	220,384
Environmental Specialist II	2.00	2.00	2.00	265,864	268,473
Equipment Mechanic I	1.00	3.00	3.00	188,902	205,724

Personnel Summary

Classification	FY 19 Adopt FTE	FY 20 Adopt FTE	FY 21 Adopt FTE	FY 20 Adopted Budget	FY 21 Adopted Budget
Equipment Mechanic II	2.00	1.00	1.00	68,140	73,006
Equipment Operator III	5.00	4.00	4.00	226,017	249,593
Executive Officer to the Board	1.00	1.00	1.00	191,754	191,754
Executive Secretary - Harbor	4.00	4.00	4.00	326,543	326,851
Garage Service Attendant II	2.00	1.00	1.00	51,678	54,820
Garage Service Attendant I-NC	0.40	0.40	0.40	14,380	15,253
Garage Supervisor	1.00	1.00	1.00	96,129	96,338
Gardener II	2.00	2.00	2.00	93,771	91,343
General Maintenance Assistant	4.00	3.00	3.00	163,077	175,586
Geographic Information Systems Analyst II	3.00	3.00	3.00	268,899	268,899
Geographic Information Systems Analyst III	1.00	1.00	1.00	99,110	99,110
Geographic Information Systems Tech I	1.00	1.00	1.00	62,834	62,834
Geographic Information Systems Tech II	2.00	2.00	2.00	127,769	127,774
GIS Supervisor	-	-	1.00	-	89,901
Harbor Control Center Supervisor	1.00	1.00	1.00	96,339	94,862
Harbor Maintenance Mechanic I	3.00	3.00	4.00	159,744	227,436
Harbor Maintenance Mechanic II	4.00	4.00	3.00	245,998	203,244
Harbor Marine Engineer	1.00	1.00	1.00	109,763	130,564
Intermodal Operations Coordinator	2.00	2.00	2.00	233,262	239,148
Intermodal Operations Manager	1.00	1.00	1.00	154,468	154,468
Maintenance Assistant I	8.00	8.00	8.00	311,897	331,430
Maintenance Assistant II	1.00	1.00	1.00	44,199	40,095
Maintenance Assistant III	6.00	7.00	6.00	330,085	285,654
Maintenance Assistant I-NC	1.50	1.50	1.50	51,787	55,754
Maintenance Planner I	1.00	1.00	1.00	69,508	77,503
Maintenance Planner II	3.00	3.00	3.00	227,472	234,708
Maintenance Supervisor	2.00	2.00	2.00	135,088	148,669
Manager of Accounting	1.00	1.00	1.00	140,994	140,994
Manager of Air Quality Practices	1.00	1.00	1.00	141,364	135,520
Manager of Business Applications	1.00	1.00	1.00	151,228	151,228
Manager of Business Development	1.00	1.00	1.00	133,164	141,143
Manager of Business Development Strategic Support	1.00	1.00	1.00	133,160	133,160
Manager of Business Development-Export Cargo	1.00	1.00	1.00	133,164	133,164
Manager of Business Development-Import Cargo	1.00	1.00	1.00	133,164	133,164
Manager of CEQA/NEPA Projects	1.00	1.00	1.00	138,906	138,906
Manager of Contract Compliance	1.00	1.00	1.00	135,000	140,539
Manager of Cyber Information Security	1.00	1.00	1.00	153,875	165,641
Manager of Emergency Management	1.00	1.00	-	139,595	-
Manager of Engineering Technology	1.00	1.00	1.00	143,815	143,815
Manager of Environmental Remediation	1.00	1.00	1.00	141,623	141,623
Manager of Facilities Maintenance	1.00	1.00	1.00	133,164	133,164
Manager of Financial Planning & Analysis	1.00	1.00	1.00	147,906	147,906
Manager of Fleet/Utilities	1.00	1.00	1.00	130,000	135,520
Manager of Grants	-	1.00	-	135,000	-

Personnel Summary

Classification	FY 19 Adopt FTE	FY 20 Adopt FTE	FY 21 Adopt FTE	FY 20 Adopted Budget	FY 21 Adopted Budget
Manager of Grants Administration	1.00	1.00	2.00	133,164	278,164
Manager of Harbor Maintenance Administration	1.00	1.00	1.00	133,163	133,163
Manager of Harbor Marine	1.00	1.00	1.00	144,456	144,456
Manager of Infrastructure Maintenance	1.00	1.00	1.00	127,992	135,000
Manager of Labor Compliance Administration	1.00	1.00	1.00	133,160	133,160
Manager of Master Planning	1.00	1.00	1.00	143,350	145,000
Manager of Network Operations	1.00	1.00	1.00	150,000	150,578
Manager of Project Controls	1.00	1.00	1.00	151,438	151,438
Manager of Revenue	1.00	1.00	1.00	133,164	133,164
Manager of Safety/Business Continuity	1.00	1.00	1.00	141,427	141,427
Manager of Security Operations	2.00	2.00	3.00	268,164	413,516
Manager of Sustainable Practices	1.00	1.00	1.00	141,420	141,420
Manager of Technical Security	1.00	1.00	1.00	144,028	153,589
Manager of Tenant Services	-	-	1.00	-	133,511
Manager of Transportation Planning	1.00	1.00	1.00	138,457	138,457
Manager of Water Quality Practices	1.00	1.00	1.00	141,623	141,623
Managing Director	4.00	4.00	4.00	939,425	962,310
Marketing Manager	2.00	2.00	2.00	183,471	219,121
Mechanical Supervisor	1.00	1.00	1.00	89,359	91,447
Members - Boards / Commissions	-	-	-	26,000	-
Motor Sweeper Operator	1.00	1.00	1.00	61,215	55,683
Office Automation Analyst I	2.00	2.00	1.00	148,592	74,865
Office Automation Analyst II	1.00	2.00	3.00	146,881	242,411
Office Automation Analyst III	2.00	2.00	2.00	174,171	174,171
Office Automation Analyst IV	1.00	-	-	-	-
Office Services Assistant III	1.00	-	-	-	-
Office Systems Analyst I	1.00	-	-	-	-
Office Systems Analyst II	6.00	7.00	8.00	817,879	934,227
Office Systems Analyst III	14.00	14.00	13.00	1,730,189	1,641,768
Painter II	1.00	1.00	1.00	61,601	66,327
Painter Supervisor	1.00	1.00	1.00	71,919	71,919
Park Maintenance Supervisor	1.00	1.00	1.00	69,398	72,942
Payroll Personnel Assistant III	-	2.00	2.00	109,817	103,383
Plumber	6.00	6.00	6.00	414,479	433,568
Plumber Supervisor	1.00	1.00	2.00	78,816	147,000
Port Commercial Appraiser	1.00	1.00	1.00	121,306	109,560
Port Communications Specialist II	0.20	0.20	0.20	11,430	11,429
Port Communications Specialist III	3.00	4.00	2.00	298,257	149,674
Port Communications Specialist IV	4.00	3.00	5.00	234,799	407,228
Port Communications Specialist V	5.00	7.00	6.00	609,084	539,648
Port Financial Analyst I	1.00	-	-	-	-
Port Financial Analyst II	1.00	2.00	2.00	201,811	206,893
Port Financial Analyst III	3.00	4.00	5.00	429,766	551,510
Port Leasing Sales Officer I	1.00	1.00	1.00	64,413	64,413

Personnel Summary

Classification	FY 19 Adopt FTE	FY 20 Adopt FTE	FY 21 Adopt FTE	FY 20 Adopted Budget	FY 21 Adopted Budget
Port Leasing Sales Officer V	4.00	4.00	4.00	428,515	428,515
Port Planner I	1.00	1.00	1.00	85,086	89,538
Port Planner II	1.00	1.00	1.00	91,336	96,136
Port Planner III	1.00	-	-	-	-
Port Planner IV	2.00	3.00	3.00	348,499	334,093
Port Planner V	2.00	2.00	2.00	264,769	238,317
Port Records Center Supervisor	1.00	1.00	1.00	73,051	61,290
Port Risk Manager II	1.00	1.00	1.00	104,116	104,116
Port Security System Operator II	9.00	9.00	9.00	660,359	675,995
Port Security System Operator III	4.00	4.00	4.00	320,847	324,766
Principal Construction Inspector	4.00	4.00	4.00	403,856	425,577
Project Budget Analyst II	3.00	-	-	-	-
Project Budget Analyst III	-	2.00	2.00	208,232	208,232
Project Scheduler I	1.00	1.00	1.00	107,266	107,266
Project Scheduler II	2.00	2.00	2.00	254,634	254,634
Pump Station Supervisor	-	1.00	-	76,795	-
Safety Specialist	2.00	2.00	2.00	203,061	186,532
Secretary	8.00	7.00	7.00	388,122	378,978
Senior Accountant	1.00	1.00	1.00	78,831	93,958
Senior Civil Engineer	24.00	21.00	20.00	2,744,063	2,640,319
Senior Director of Engineering Program Delivery	1.00	1.00	1.00	193,883	193,883
Senior Electrical Engineer	2.00	2.00	1.00	219,526	134,237
Senior Electrical Inspector	1.00	1.00	1.00	77,270	77,278
Senior Engineering Tech I	2.00	2.00	2.00	182,638	182,638
Senior Engineering Tech II	1.00	1.00	1.00	96,094	96,094
Senior Equipment Operator	2.00	2.00	3.00	143,255	188,392
Senior Estimator	1.00	-	-	-	-
Senior Port Leasing Officer	1.00	1.00	1.00	121,306	101,595
Senior Program Manager	5.00	5.00	5.00	743,019	715,971
Senior Scheduler	3.00	3.00	3.00	402,710	402,710
Senior Secretary	10.00	12.00	13.00	685,246	741,722
Senior Structural Engineer	1.00	1.00	1.00	140,758	140,758
Senior Survey Technician	6.00	5.00	5.00	400,879	432,457
Senior Surveyor	3.00	4.00	4.00	428,958	428,958
Senior Traffic Engineer	1.40	1.40	1.00	175,105	134,237
Special Assistant to the Executive Director	1.00	-	-	-	-
Special Services Officer II	5.00	5.00	5.00	307,302	308,764
Special Services Officer III	51.00	51.00	51.00	3,077,092	3,115,938
Special Services Officer IV	9.00	8.00	8.00	611,536	582,942
Stock & Receiving Clerk	1.00	1.00	1.00	42,296	37,983
Storekeeper I	-	1.00	1.00	48,983	51,546
Storekeeper II	1.00	-	-	-	-
Supervisor of Commercial Diving	1.00	1.00	1.00	100,696	108,464
Supervisor-Stores/Property	1.00	1.00	1.00	56,877	56,904

Key Contacts

Mario Cordero, Executive Director

Rick Cameron, Deputy Executive Director, Planning & Development

Noel Hacegaba, Deputy Executive Director, Administration & Operations

Sam Joumblat, Managing Director, Finance & Administration Bureau

Sean Gamette, Managing Director, Engineering Services Bureau

Heather Tomley, Managing Director, Planning and Environmental Affairs Bureau

Kenneth Duncan, Managing Director, Commercial Operations Bureau

Duane Kenagy, Capital Programs Executive

Wei Chi, Director of Finance

415 W. Ocean Blvd.
Long Beach, CA 90802
Phone: (562) 283-7550
www.polb.com

