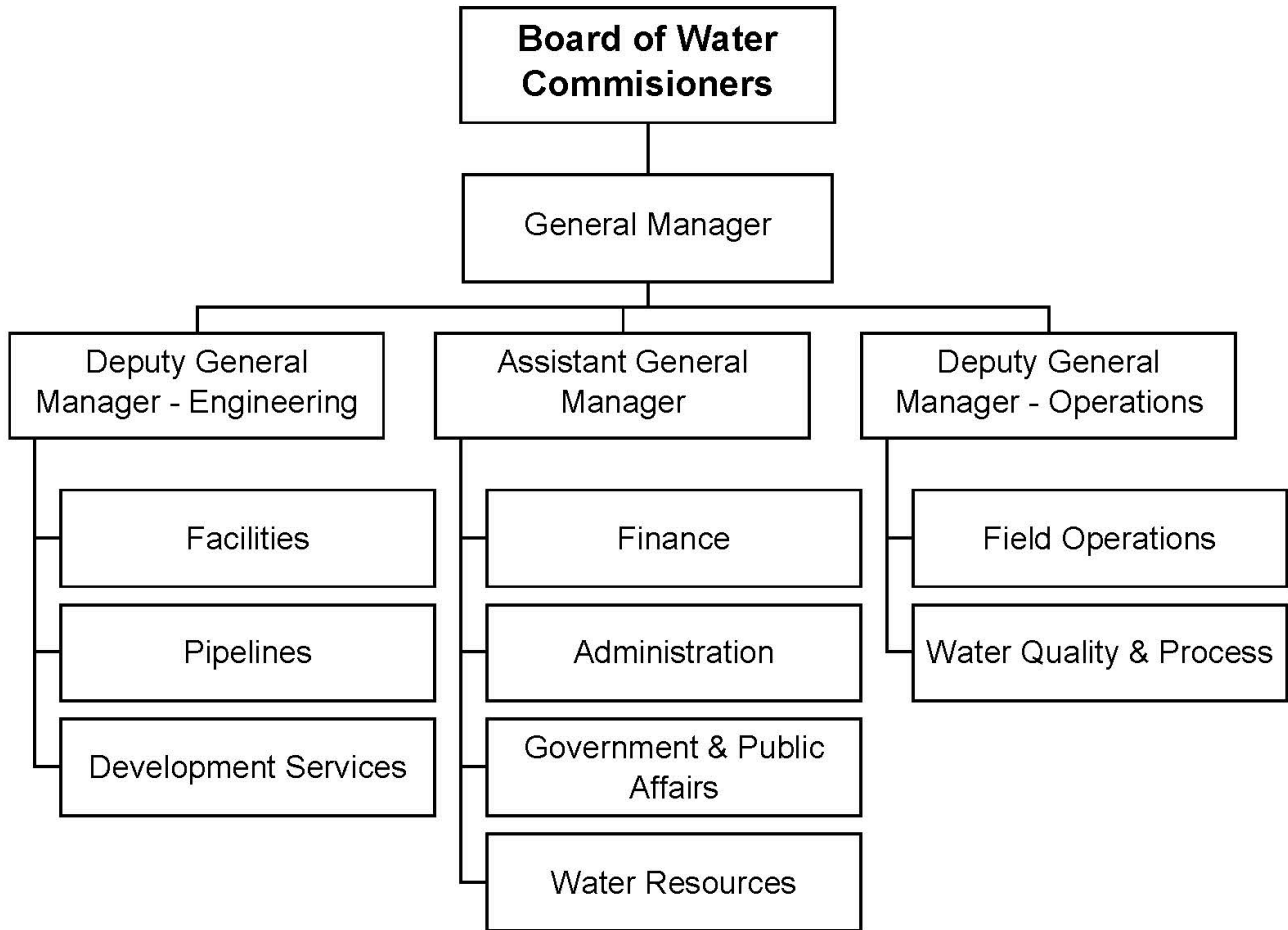


Water



Mission Statement

The Long Beach Water Department is committed to the effective delivery of a reliable supply of quality water and the environmentally responsible disposal of sewage while continually providing exceptional customer service.

Financial Summary by Category

	Actual FY 19	Adopted* FY 20	Adjusted** FY 20	Adopted* FY 21
Revenues:				
Property Taxes	-	-	-	-
Sales and Use Taxes	-	-	-	-
Other Taxes	-	-	-	-
Utility Users Tax	-	-	-	-
Franchise Fees	-	-	-	-
Licenses, Permits and Fees	2,215,581	750,820	750,820	502,000
Fines and Forfeitures	-	-	-	-
Use of Money & Property	2,248,867	1,296,793	1,296,793	1,262,813
Revenue from Other Agencies	10,821	-	-	750,000
Charges for Services	117,093,711	128,430,792	128,430,792	139,189,798
Other Revenues	4,810,177	6,906,153	6,906,153	4,881,404
Intrafund Services	-	-	-	-
Intrafund Transfers	-	-	-	-
Interfund Services	86,400	86,400	86,400	86,400
Interfund Transfers	-	120,822	120,822	-
Other Financing Sources	27,393,970	9,631,140	9,631,140	8,211,833
Total Revenues	153,859,527	147,222,920	147,222,920	154,884,248
Expenditures:				
Salaries and Wages	19,632,304	18,607,245	7,003,816	22,393,217
Employee Benefits	10,447,889	12,121,132	2,557,984	14,062,475
Overtime	2,225,405	1,500,000	(664,934)	1,100,000
Materials, Supplies and Services	62,172,587	41,419,104	55,735,666	41,624,606
Interfund Support	9,148,978	10,180,519	9,664,032	11,082,355
Intrafund Support	-	-	-	-
Capital Purchases	2,945,541	32,894,841	61,512,874	33,322,866
Insurance Premiums and Losses	-	-	-	-
Other Non-Operational Expenditures	5,196,260	6,206,268	6,206,268	6,407,814
Operating Transfers	482,219	-	-	-
Intrafund Transfers Out	-	-	-	-
Purchase of Gas & Water	28,658,826	31,936,364	31,936,364	29,185,344
Depreciation and Non Cash Expenditures	52,638	140,000	140,000	60,000
Total Expenditures	140,962,647	155,005,473	174,092,070	159,238,677
Personnel (Full-time Equivalents)	251.85	270.39	270.39	263.62

* Amounts exclude all-years carryover. See budget ordinance in the back of this document.

**Adjusted Budget as of August 31, 2020

Note: With the conversion to the new financial system, the amounts and character categories have been updated to match the revised Chart of Accounts in the system. The City is still going through a stabilization period with the new system and future reports may have further adjustments.

Personnel Summary

Classification	FY 19 Adopt FTE	FY 20 Adopt FTE	FY 21 Adopt FTE	FY 20 Adopted Budget	FY 21 Adopted Budget
General Manager - Water	1.00	1.00	1.00	284,000	284,145
Accountant I	-	-	1.00	-	58,802
Accountant III	1.00	1.00	1.00	87,085	87,085
Accounting Technician	2.00	2.00	2.00	111,691	114,270
Administrative Aide I	-	1.00	-	47,487	-
Administrative Analyst I	3.00	2.00	1.00	136,190	73,502
Administrative Analyst II	2.00	2.00	6.00	138,820	500,924
Administrative Analyst III	3.00	2.00	2.00	193,010	195,410
Administrative Intern-NC/H36	2.31	2.31	3.85	76,686	127,796
Assistant Administrative Analyst I	3.00	3.00	4.00	167,779	223,566
Assistant Administrative Analyst II	1.00	2.00	2.00	136,124	149,731
Assistant General Manager - Water	1.00	1.00	2.00	239,959	464,451
Business Systems Specialist I	-	1.00	1.00	61,259	64,553
Business Systems Specialist II	1.00	2.00	2.00	135,457	147,378
Business Systems Specialist III	-	2.00	1.00	161,983	91,688
Business Systems Specialist IV	4.00	1.00	2.00	87,103	189,023
Business Systems Specialist VI	-	-	1.00	-	124,342
Business Systems Specialist VII	2.00	2.00	3.00	282,395	423,593
Buyer I	1.00	1.00	-	74,303	-
Capital Projects Coordinator	-	2.00	-	158,469	-
Capital Projects Coordinator III	-	-	3.00	-	338,366
Chief Construction Inspector	1.00	1.00	1.00	121,822	113,585
Civil Engineer	4.00	5.00	8.00	545,809	922,394
Civil Engineer Assistant	2.00	3.00	3.00	219,547	222,566
Civil Engineer Associate	3.00	2.00	1.00	204,268	91,625
Clerk Typist III	2.77	2.77	1.77	142,783	92,362
Clerk Typist IV	1.00	1.00	1.00	56,490	56,490
Construction Inspector I	-	-	1.00	-	76,265
Construction Inspector II	7.00	7.00	6.00	610,971	560,023
Construction Services Officer	1.00	1.00	1.00	156,124	156,124
Customer Service Representative III	-	-	1.00	-	54,161
Deputy General Manager - Engineering	-	-	1.00	-	211,287
Deputy General Manager - Operations	1.00	1.00	-	224,491	-
Director - Water/Sewer Field Operations	-	-	1.00	-	153,063
Director of Administration	1.00	1.00	1.00	143,324	143,324
Director of Engineering	1.00	1.00	1.00	211,200	180,073
Director of Finance	1.00	1.00	1.00	146,570	146,630
Director of Operations	2.00	2.00	1.00	303,000	150,000
Director of Water Resources	1.00	-	-	-	-
Electrical & Instrumentation Supervisor	-	-	1.00	-	109,866
Electrical & Instrumentation Technician I	-	-	5.00	-	376,243
Electrical Supervisor	1.00	1.00	-	67,715	-
Electrician	2.00	2.00	1.00	117,033	72,283
Electrician-NC	-	0.77	-	40,515	-

Personnel Summary

Classification	FY 19 Adopt FTE	FY 20 Adopt FTE	FY 21 Adopt FTE	FY 20 Adopted Budget	FY 21 Adopted Budget
Engineering Technician I	1.00	1.00	-	60,936	-
Equipment Mechanic I	2.00	2.00	2.00	129,538	125,333
Equipment Mechanic II	1.00	1.00	1.00	70,019	61,917
Equipment Operator I	1.00	1.00	1.00	49,304	52,824
Equipment Operator II	-	-	1.00	-	49,880
Executive Assistant	1.00	1.00	1.00	86,669	86,669
Executive Secretary - Water	-	-	1.00	-	78,164
Garage Service Attendant III	1.00	1.00	1.00	61,247	61,247
Garage Supervisor II	1.00	1.00	1.00	98,634	99,094
General Maintenance Assistant	3.00	2.00	2.00	100,357	110,864
General Maintenance Supervisor I	-	1.00	-	58,276	-
General Maintenance Supervisor II	-	-	1.00	-	71,271
Laboratory Analyst I	3.00	3.00	1.00	203,876	68,759
Laboratory Analyst II	1.00	1.00	2.00	75,596	136,124
Laboratory Assistant I	-	1.00	-	43,329	-
Laboratory Assistant II	2.00	2.00	3.00	104,241	148,170
Laboratory Assistant III	1.00	-	1.00	-	57,614
Machinist	1.00	-	-	-	-
Maintenance Assistant I	1.00	1.00	-	34,256	-
Maintenance Assistant III	1.00	1.00	1.00	48,022	51,706
Manager - Budget and Rates	1.00	1.00	1.00	117,348	117,348
Manager - Engineering	3.00	3.00	3.00	493,677	491,739
Manager - Government/Public Affairs	1.00	1.00	-	150,000	-
Manager - Information Services	1.00	1.00	1.00	141,761	141,761
Manager - Security & Emergency Prep	1.00	1.00	1.00	124,211	126,337
Manager - Water Resources	-	1.00	1.00	127,345	126,337
Members - Boards/Commissions	-	-	-	26,000	-
Office Administrator	2.00	2.00	2.00	149,024	137,358
Painter I	-	1.00	1.00	49,950	55,856
Painter Supervisor	1.00	-	-	-	-
Park Maintenance Supervisor	1.00	1.00	-	73,051	-
Payroll/Personnel Assistant III	1.00	1.00	1.00	56,800	56,800
Plumber	1.00	1.00	1.00	69,491	74,850
Principle Construction Inspector	-	1.00	1.00	101,100	104,567
Public Affairs Officer	1.00	1.00	1.00	90,239	90,239
Safety Specialist II	1.00	-	1.00	-	87,085
Safety Specialist III Confidential	-	1.00	-	91,706	-
Secretary	1.00	1.00	2.00	55,446	102,784
Secretary to Board-Water	1.00	1.00	1.00	86,669	86,669
Senior Accountant	2.00	2.00	2.00	193,010	193,010
Senior Civil Engineer	5.00	5.00	3.00	672,645	353,763
Senior Equipment Operator	12.00	12.00	12.00	837,010	920,280
Senior Program Manager	2.00	2.00	5.00	276,476	745,525
Senior Secretary	1.00	1.00	1.00	61,149	61,149

Personnel Summary

Classification	FY 19 Adopt FTE	FY 20 Adopt FTE	FY 21 Adopt FTE	FY 20 Adopted Budget	FY 21 Adopted Budget
Sewer Operations Superintendent	1.00	1.00	1.00	122,505	122,505
Stock & Receiving Clerk	1.00	-	-	-	-
Stock & Receiving Clerk-NC	-	0.77	-	13,810	-
Storekeeper I	-	1.00	1.00	42,229	51,546
Storekeeper II	1.00	2.00	2.00	114,162	110,406
Storekeeper I-NC	-	0.77	-	15,248	-
Superintendent - Support Services	1.00	1.00	1.00	114,750	114,750
Superintendent - Water Construction	1.00	1.00	1.00	130,103	130,103
Supervisor - Facility Management	-	1.00	1.00	85,272	89,718
Telemetry Instrument Technician I	1.00	1.00	-	54,369	-
Telemetry Instrument Technician II	3.00	3.00	-	231,812	-
Water Comm Center Supervisor	1.00	1.00	1.00	86,813	86,813
Water Comm Dispatcher I	2.00	2.00	1.00	103,112	64,295
Water Comm Dispatcher II	1.00	1.00	1.00	69,177	69,177
Water Conservation Specialist	2.00	2.00	-	176,049	-
Water Laboratory Manager	1.00	1.00	1.00	133,699	133,699
Water Operations Superintendent	1.00	1.00	1.00	126,944	126,944
Water Quality Organic Chemist	1.00	1.00	1.00	109,560	109,560
Water Treatment Operator I	5.00	7.00	7.00	363,001	399,967
Water Treatment Operator II	10.00	9.00	10.00	643,882	764,383
Water Treatment Operator III	9.00	8.00	7.00	690,749	652,118
Water Treatment Operator IV	2.00	2.00	2.00	193,610	209,629
Water Treatment Superintendent	1.00	1.00	1.00	147,968	147,968
Water Treatment Supervisor I	3.00	3.00	3.00	316,629	317,067
Water Utility Mechanic I	22.00	36.00	12.00	1,340,700	792,894
Water Utility Mechanic I - NC	1.77	-	-	-	-
Water Utility Mechanic II	26.00	21.00	35.00	1,105,641	2,542,837
Water Utility Mechanic III	13.00	16.00	14.00	1,077,076	1,244,252
Water Utility Supervisor I	15.00	15.00	15.00	1,455,639	1,482,676
Water Utility Supervisor II	6.00	6.00	6.00	618,894	642,653
Welder	1.00	1.00	1.00	65,526	72,736
Subtotal Salaries	251.85	270.39	263.62	20,908,802	23,358,774
Overtime	-	-	-	1,500,000	1,100,000
Fringe Benefits	-	-	-	11,674,571	13,594,888
Administrative Overhead	-	-	-	446,561	503,587
Attrition/Salary Savings	-	-	-	(2,300,000)	(1,000,000)
Expenditure Transfer	-	-	-	(1,557)	(1,557)
Total	251.85	270.39	263.62	32,228,377	37,555,692

Key Contacts

Chris Garner, General Manager

B. Anatole Falagan, Assistant General Manager

Tai Tseng, Assistant General Manager

Sean Crumby, Deputy General Manager, Engineering

Paul T. Fujita, Director of Finance

The Long Beach Water Department Board of Water Commissioners

Harry Saltzgaver, President, Board of Water Commissioners

Frank Martinez, Vice President, Board of Water Commissioners

Arthur M. Levine, Secretary, Board of Water Commissioners

Robert E. Shannon, Member, Board of Water Commissioners

Gloria Cordero, Member, Board of Water Commissioners

1800 East Wardlow Road

Long Beach, CA 90807

Phone: (562) 570-2300

Fax: (562) 570-2305

www.longbeach.gov

www.lbwater.org