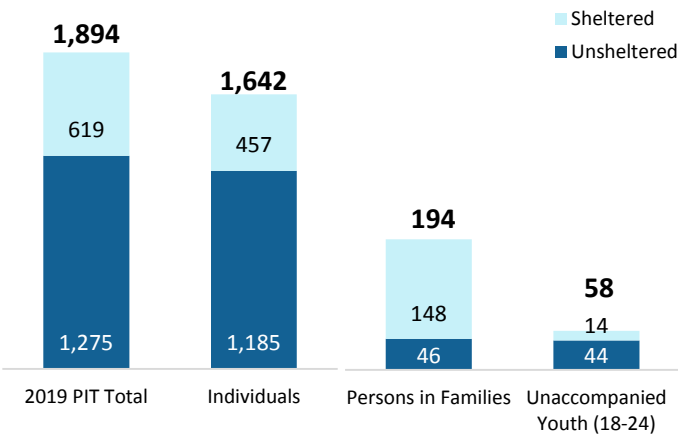


# Long Beach

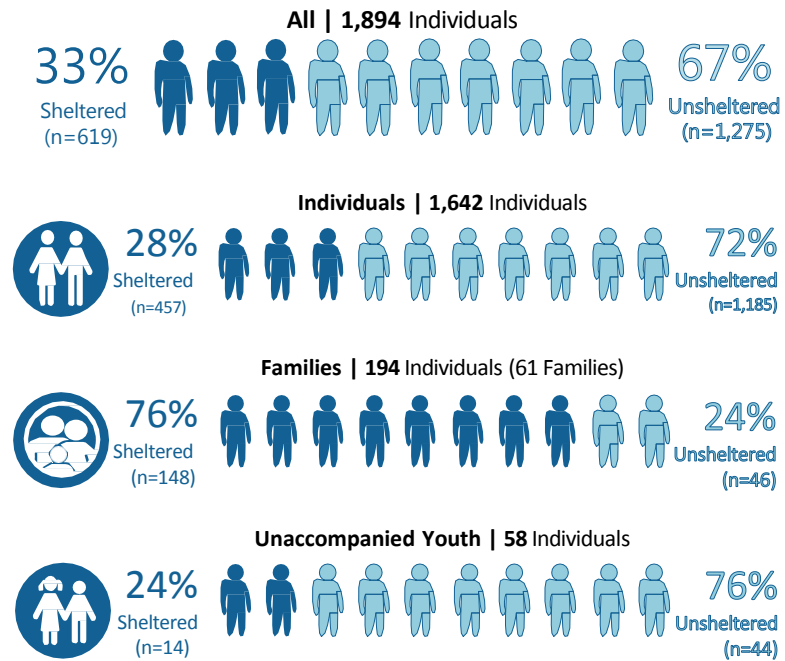
## 2019 HOMELESS POINT-IN-TIME COUNT

On January 24, 2019 the City conducted a Point-in-Time Count (PIT) that accounted for **1,894** people experiencing homelessness in Long Beach. As the lead agency for the Long Beach Continuum of Care (COC), the Department of Health and Human Services is responsible for conducting and reporting the findings of the PIT Count in the annual Continuum of Care funding application to the U.S. Department of Housing and Urban Development (HUD). These findings help communities and the federal government better understand the nature and extent of homelessness nationwide, and inform local strategic planning, capacity building, and advocacy campaigns to make homelessness a rare, brief, and one-time experience in Long Beach.

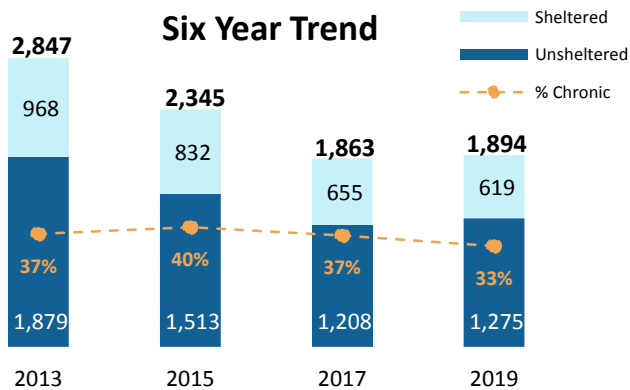
### 2019 PIT Results



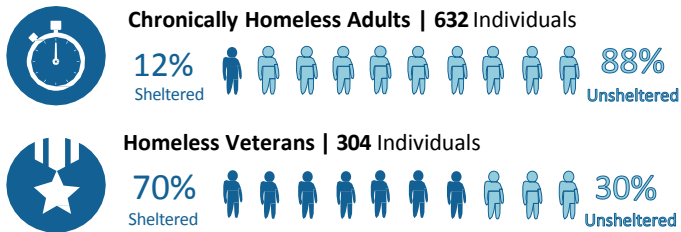
### 2019 Sheltered/Unsheltered Population



### Six Year Trend



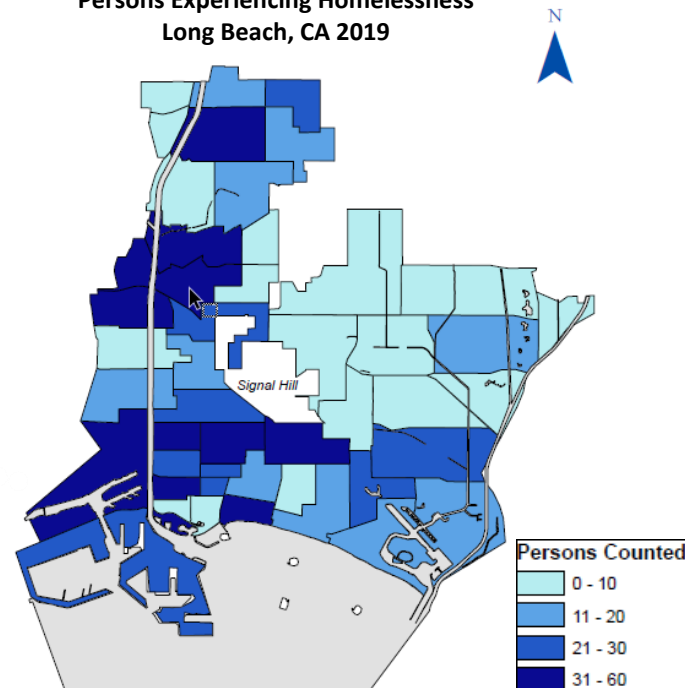
### Subpopulations



First Homelessness Episode: **52% Yes**  
**48% No**

Note: Results based on 1,203 responses

### Persons Experiencing Homelessness Long Beach, CA 2019



Note: Data collected during the PIT is solely based on self-report.



### Duration of Current Episode of Homelessness

Note: Results based on 1,455 responses

8%

30 days or less

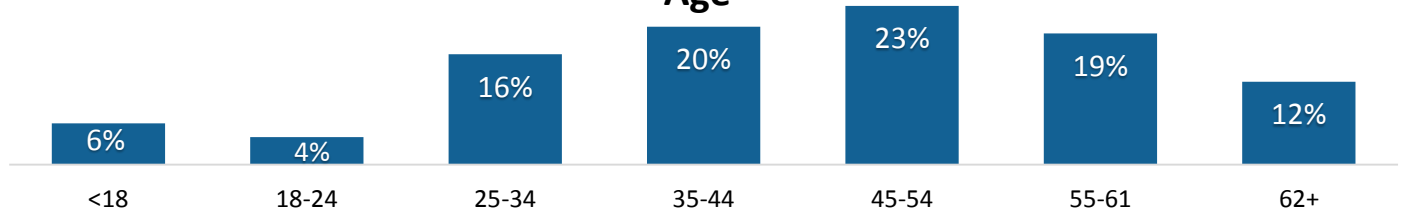
32%

1-11 months

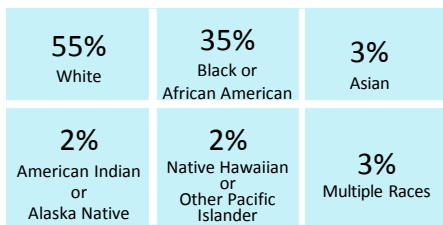
60%

One year or more

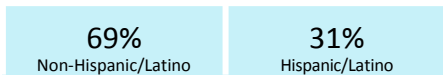
### Age



### Race



### Ethnicity



### Gender



69%  
Male



31%  
Female



<1%  
Transgender



<1%  
Gender Non-conforming

### LGBTQ+



4%  
Of survey respondents are LGBTQ+.

### Foster Care



5%  
of survey respondents have been in the foster care system.

### Students



4%  
Of survey respondents are students.

### Disabling Conditions

The survey included questions related to physical and mental health conditions. The purpose was to understand the challenges and needs across homeless populations. It is important to note that these data are self-reported.

Note: Multiple response question, numbers will not total to 100%.



24%  
Substance Use Disorder



34%  
Serious Mental Illness



3%  
AIDS/HIV



16%  
Survivor of Domestic Violence

### Outreached for Services

1,131

1,131 or 60% of survey respondents said they have been outreached for services.

### Accepted Services

593

593 or 31% of survey respondents said they have previously accepted services from outreach.

### Subpopulation Definitions

#### Chronically Homeless

An individual or a family with a head of household with a disabling condition who (1) has been continuously homeless for 1 year or more and/or (2) has experienced at least four separate episodes of homelessness in the past three years, where the combined episodes total a length of 12 months or more.

#### Veterans

Persons who have served active duty in the Armed Forces of the United States. This does not include inactive military reserves or the National Guard unless the person was called up to active duty.

#### Families

A household with at least one (1) adult member (persons 18 or older) and at least one (1) child member (persons under 18).

#### Unaccompanied Youth

Individuals between the ages of 18 and 24 years old who are homeless and living without a parent or legal guardian.

For more information about the Long Beach Department of Health and Human Services and efforts to address homelessness in Long Beach, please visit <http://www.longbeach.gov/health>