



## LGB DISADVANTAGED BUSINESS ENTERPRISE (DBE) OPPORTUNITIES

At Long Beach Airport (LGB), we are committed to increasing the opportunities to involve disadvantaged, minority and women-owned firms in all Airport business projects. All Airport contracts and concession agreements incorporate policies, procedures and clauses regarding specific Minority/Women Business Enterprise (M/WBE), Small Business Enterprise (SBE), Disadvantaged Business Enterprise (DBE) and Airport Concessionaire DBE (ACDBE) requirements. It is the policy of LGB to ensure that DBEs have an equal opportunity to receive and participate in DOT-assisted contracts.

### ELIGIBILITY

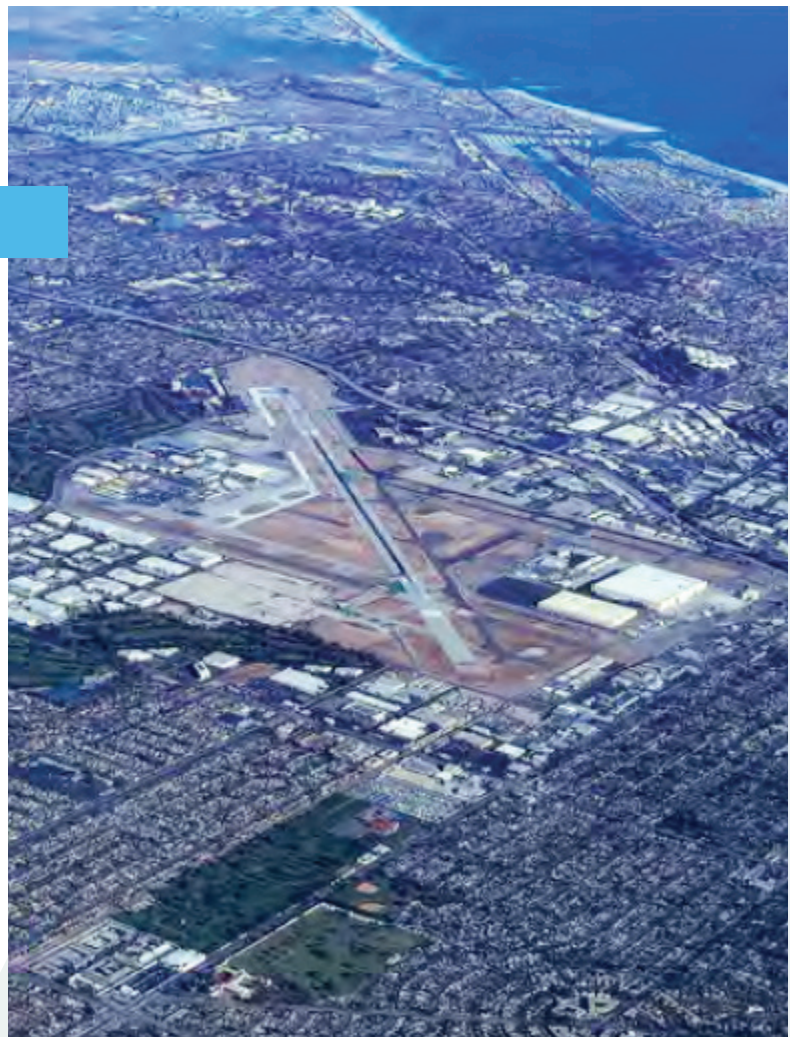
DBE opportunities exist at LGB in professional services or consulting, construction contracting and Airport concessions. To be eligible as a DBE, a business must be for-profit, considered a small business and the controlling member(s) of the business must be socially and economically disadvantaged. DBEs must be certified by a Department of Transportation-governed transit, airport authority or through an agent of the Uniform Certification Program (UCP). To confirm DBE status, your company can visit the State of California DBE directory.

### UPCOMING PROJECTS

- Roadway Improvements
- North Concourse Solar Panels
- Lakewood Access Gate
- Pad 11 Reconstruction
- Taxilane K [Future Taxilane T] Reconstruction
- Construct Taxilane U

## CATEGORIES OF WORK

- Highway, Street and Bridge Construction
- Electrical Contractors and Other Wiring Installation Contractors
- Site Preparation Contractors
- Landscape Architectural Services
- Engineering Services
- Building Inspection Services
- Testing Laboratories
- Administrative Management and General Management Consulting Services
- Structural Steel and Precast Concrete Contractors
- Other Foundation, Structure and Building Exterior Contractors



*LGB encourages DBE and other small businesses to register and receive solicitation notices through the City of Long Beach's new online procurement website: <https://longbeachbuys.buyspeed.com/bsa/>*

*For more information on the City's procurement processes:  
<http://www.longbeach.gov/finance/business-info/purchasing-division/>*

*To learn more about the DBE Plan: <https://www.longbeach.gov/finance/business-info/compliance/dbe/>  
Apply for DBE: <https://dot.ca.gov/programs/civil-rights/dbe>*

*LGB is committed to a program for the participation of Disadvantaged Business Enterprises (DBEs) in contracting opportunities in accordance with 49 Code of Federal Regulations (CFR) Part 23 and 26.*

### **Long Beach Airport Contact:**

**Sokunthea "Soey" Kol**  
**sokunthea.kol@longbeach.gov**  
**562-570-2639**



**long beach**  
**airport**

**Long Beach Airport** | 4100 Donald Douglas Drive, Long Beach, CA 90808 | 562-570-2600