

Airport Advisory Commission

Wayne Chaney Sr.
Chair

Jeffrey Anderson
Vice Chair

Alvaro Castillo

Rita Nayak

Phil Ramsdale

Geetanjali Reuben

Jeff Rowe

Roland B. Scott, Jr.

Mary Sophiea

Airport Management

Jess L. Romo, A.A.E.
Airport Director

Juan López-Ríos
Deputy Airport Director

Ken Mason
Executive Assistant

Claudia Lewis
Manager of Administration
& Finance

Ron Reeves
Airport Operations Manager

Ambi Thurai
Engineering Officer

Dale Worsham
Administrative Officer

Karl Zittel
Airside Operations Officer

Stephanie Montuya-Morisky
Public Affairs Officer

Matthew Brookes
Airport Properties Officer

Scott Garrett
Facilities Management Officer

Mony Chhey
Financial Services Officer

Ryan McMullan
Noise & Environmental Affairs
Officer



long beach
airport



Long Beach Airport Monthly Noise Report October 2018

COMMERCIAL AIRCRAFT LATE NIGHT ACTIVITY
LGB Current Month & Calendar Year-To-Date Statistics (10 PM- 7AM)
October 2018

October				CY-T-D 2018		
10PM - 11PM Activity	2018	2017	Change	2018	2017	Change
Air Carrier & Commuter Operations	2,614	3,112	-16.0%	29,672	29,905	-0.8%
American/Mesa/SkyWest Airlines	0	2	-200.0%	29	18	61.1%
Delta/SkyWest Airlines	1	0	100.0%	18	24	-25.0%
FedEx	0	0		0	0	
Hawaiian Airlines	1	0	100.0%	2	0	200.0%
JetBlue Airways	4	22	-81.8%	283	388	-27.1%
Southwest Airlines	1	1	0.0%	10	16	-37.5%
UPS	0	0		0	0	
Subtotal 10PM-11PM	7	25	-72.0%	342	446	-23.3%
11PM- 7AM Activity	2018	2017	Change	2018	2017	Change
American/Mesa/SkyWest Airlines	0	0		15	11	36.4%
Delta/SkyWest Airlines	0	0		5	6	-16.7%
FedEx	0	0		0	0	
Hawaiian Airlines	2	0	200.0%	3	0	300.0%
JetBlue Airways	7	10	-30.0%	173	219	-21.0%
Southwest Airlines	0	0		0	5	-500.0%
UPS	0	0		0	0	
Subtotal 11PM-7AM	9	10	-10.0%	196	241	-18.7%
TOTAL	16	35	-54.3%	538	687	-21.7%

Notes:

0.6% (16 of 2,614) of total commercial operations occurred between 10pm - 7am.

0.5 flights - Nightly average for all late night (10:00 PM—7:00 AM) commercial flights, includes unanticipated delays.

0.3 flights - Nightly average for commercial flights after 11 PM.

Of the 16 Late-Night Operations, 56% were due to mechanical issues, 19% were due to air traffic control conditions, 6% were due to staffing-related issues, 6% were due to diversions, 6% were due to explicit air traffic control direction and 6% were due to unknown reasons.

AIRPORT NOISE VIOLATIONS						
LGB Current Month & Calendar Year-To-Date Statistics						
October 2018						
October				CY-T-D 2018		
Air Carrier Noise Violations	2018	2017	Change	2018	2017	Change
American/Mesa Airlines	0	0		17	6	183.3%
Delta/SkyWest Airlines	0	0		5	4	25.0%
FedEx	0	0		0	0	
Hawaiian Airlines	2	0	200.0%	3	0	300.0%
JetBlue Airways	6	10	-40.0%	201	219	-8.2%
Southwest Airlines	0	0		0	3	-300.0%
UPS	0	0		0	0	
Subtotal	8	10	-20.0%	226	232	-2.6%
Commuter Noise Violations	2018	2017	Change	2018	2017	Change
American/SkyWest Airlines	0	0		0	0	
Delta/SkyWest Airlines	0	0		0	0	
Subtotal	0	0		0	0	
Non-Commercial Noise Violations	2018	2017	Change	2018	2017	Change
All GA, Charter & Other	12	18	-33.3%	112	146	-23.3%
TOTAL	20	28	-28.6%	338	378	-10.6%
Monetary Fines	2018	2017		2018	2017	
Airport Surcharges	\$3,000	\$1,900		\$60,300	\$21,900	
Consent Decree	\$36,000	\$48,000		\$936,000	\$1,128,000	
TOTAL	\$39,000	\$49,900		\$996,300	\$1,149,900	

AIRPORT OPERATIONS						
LGB Current Month & Calendar Year-To-Date Statistics						
October 2018						
October				CY-T-D 2018		
Airport Operations (FAA)	2018	2017	Change	2018	2017	Change
Air Carrier + Commuter Carriers	2,614	3,112	-16.0%	29,672	29,905	-0.8%
Air Taxi + General Aviation	21,203	25,421	-16.6%	196,884	237,499	-17.1%
Military Operations	109	133	-18.0%	1,235	1,175	5.1%
Total Aircraft Operations	23,926	28,666	-16.5%	227,791	268,579	-15.2%

Notes:

0.1% (20 of 23,926) of the Airport's total aircraft operations (Commercial & GA) resulted in an aircraft noise violation.
0.3% (8 of 2,614) of the Airport's Commercial operations (Commercial & Commuter) resulted in an aircraft noise violation.

AIRCRAFT NOISE VIOLATORS

October 2018

OWNERNAME	DATE	TIME	A/D	RWY	FLIGHT #	A/C TYPE	ORIG/DEST	SEL	LIMIT	STATUS
Avanti 180 LLC	10/2/2018	17:45:36	A	26R		P180		95.8	93.0	VIO
JetBlue Airways	10/2/2018	23:44:31	A	30	JBU405	A320	BOS	92.6	79.0	VIO + Alt Enf
Delta Air Lines	10/6/2018	23:17:36	A	30		B752		94.1	79.0	VIO
Skechers USA Inc	10/7/2018	23:26:16	A	30		GL5T		85.6	79.0	VIO
Olympia Aviation LLC	10/8/2018	23:38:51	D	30		MD81		102.2	79.0	VIO
JetBlue Airways	10/9/2018	23:24:16	A	26R	JBU405	A320	BOS	93.4	n/a	VIO + Alt Enf
JetBlue Airways	10/11/2018	6:17:14	A	30	JBU278	A321	SFO	93.9	90.0	VIO + Alt Enf
Monte Carlo Associates LLC	10/11/2018	9:08:24	D	26R		F900		95.3	92.0	VIO
Mashair LLC	10/13/2018	0:31:29	A	30		C525		85.6	79.0	VIO
Hawaiian Airlines	10/15/2018	23:13:03	A	30	HAL70	A21N	HNL	92.6	79.0	VIO
N767CJ LLC	10/17/2018	4:25:34	A	30		H25C		88.2	79.0	VIO
Skechers USA Inc	10/25/2018	3:33:58	A	30		GL5T		86.3	79.0	VIO
Hawaiian Airlines	10/26/2018	0:11:46	A	30	HAL70	A21N	HNL	94.7	79.0	VIO
Big Wednesday Air LLC	10/27/2018	22:07:55	A	30		PC12		92.4	90.0	VIO
GHS Leasing Co	10/27/2018	23:50:54	A	30		LJ60		84.1	79.0	VIO
Pakawalup LLC	10/28/2018	23:59:28	D	30		C750		81.2	79.0	VIO
JetBlue Airways	10/30/2018	23:17:47	A	30	JBU179	A320	LAS	92.8	90.0	VIO + Alt Enf
JetBlue Airways	10/31/2018	0:06:30	D	30	JBU1926	A320	SJC	89.3	79.0	VIO + Alt Enf
JetBlue Airways	10/31/2018	2:43:15	A	30	JBU1925	A320	SJC	92.5	79.0	VIO + Alt Enf
Franklin/Templeton Travel Inc	10/31/2018	23:25:30	A	30		GLF5		87.0	79.0	VIO

DEFINITIONS:

A/C Type — Aircraft Type

RWY — Runway

A/D— Arrival / Departure

SEL — SENEL — Single Event Noise Exposure Level (dBA)

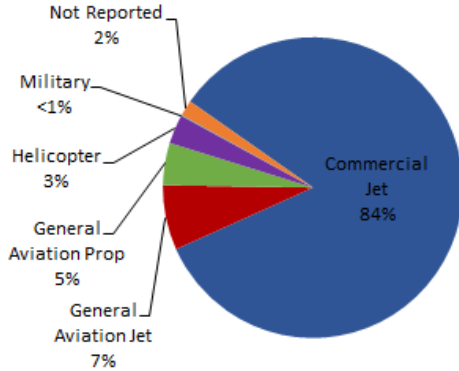
ALT ENF — Alternative Enforcement

VIO—Violation

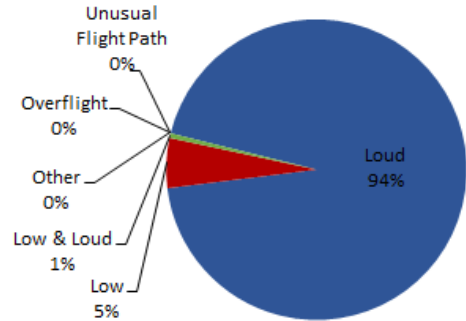
LGB AIRCRAFT NOISE COMPLAINTS

October 2018

Complaints by Aircraft Types



Complaints by Concern



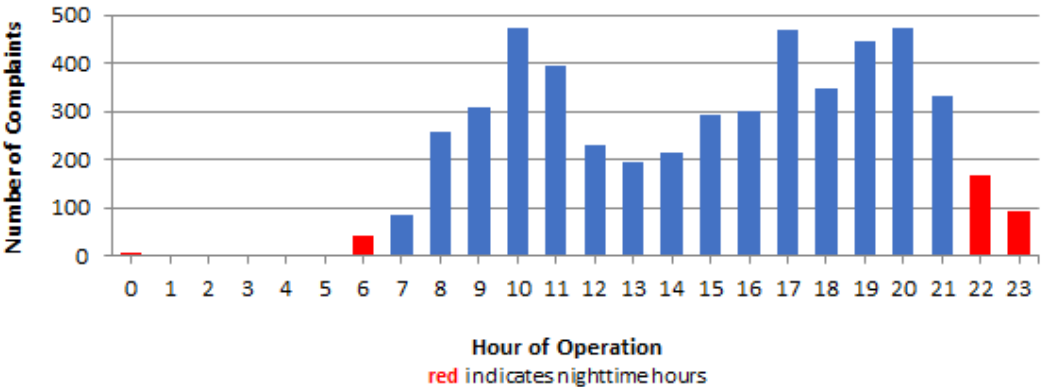
Complaints by Zip Code ¹		
Zip Code	Complaints	Units
90278	271	1
90501	1	1
90713	8	1
90720	2	2
90740	7	3
90805	29	2
90807	36	20
90808	23	17
90815	1	1
92612	36	1
92620	1	1
92626	393	2
92646	17	1
92647	1,567	6
92648	1,737	15
92649	1,017	16
92651	2	1
Not Reported	7	7
Grand Total	5,155	98

Long Beach Residents' Helicopter Complaints Submitted to FAA ²				
Zip Code	Individual Complaints	Number of Individuals	Anonymous Complaints	Total Complaints
90802	9	1	18	27
90803	98	6	70	168
90808	0	n/a	2	2
90814	16	1	358	374
Grand Total	123	8	448	571

¹ These data include data submitted directly to Long Beach Airport and does not include data submitted to FAA.

² These data reflect helicopter noise complaints submitted directly to FAA.

Complaints by Time of Operation





long beach airport



Long Beach Airport

4100 E. Donald Douglas Drive, Long Beach, CA 90808

www.lgb.org • lgbapt@longbeach.gov

Administration • (562) 570-2619