

## Airport Advisory Commission

**Jeffrey Anderson**  
Chair

**Wayne Chaney Sr.**  
Vice Chair

**Alvaro Castillo**

**Katie Larson**

**Rita Nayak**

**Miles Nevin**

**Geetanjali Reuben**

**Jeff Rowe**

**Mary Sophiea**

## Airport Management

**Cynthia Guidry**  
Director

**Juan López-Ríos**  
Deputy Airport Director

**Ken Mason**  
Executive Assistant

**Claudia Lewis**  
Manager of Administration  
& Finance

**Ron Reeves**  
Airport Operations & Facilities  
Manager

**Ambi Thurai**  
Engineering Officer

**Dale Worsham**  
Administrative Officer

**Karl Zittel**  
Airside Operations Officer

**Matthew Brookes**  
Airport Properties Officer

**Scott Garrett**  
Facilities Management Officer

**Mony Chhey**  
Financial Services Officer

**Scott Korobkin**  
Superintendent of Safety and  
Security

**Kate Kuykendall**  
Public Affairs Officer

**Ryan McMullan**  
Noise & Environmental Affairs  
Officer



**long beach**  
airport



# Long Beach Airport Monthly Noise Report October 2019

**COMMERCIAL AIRCRAFT LATE NIGHT ACTIVITY**  
**LGB Current Month & Calendar Year-To-Date Statistics (10 PM- 7AM)**  
**October 2019**

October				Calendar Year-To-Date		
10PM - 11PM Activity	2019	2018	Change	2019	2018	Change
<b>Air Carrier &amp; Commuter Operations</b>	<b>2,813</b>	<b>2,614</b>	<b>7.6%</b>	<b>27,377</b>	<b>29,672</b>	<b>-7.7%</b>
American/Mesa/SkyWest Airlines	1	0	100.0%	15	29	-48.3%
Delta/SkyWest/Compass Airlines	0	1	-100.0%	23	18	27.8%
FedEx	0	0		0	0	
Hawaiian Airlines	0	1	-100.0%	3	2	50.0%
JetBlue Airways	5	4	25.0%	97	283	-65.7%
Southwest Airlines	1	1	0.0%	9	10	-10.0%
UPS	0	0		0	0	
<b>Subtotal 10PM-11PM</b>	<b>7</b>	<b>7</b>	<b>0.0%</b>	<b>147</b>	<b>342</b>	<b>-57.0%</b>
11PM- 7AM Activity	2019	2018	Change	2019	2018	Change
American/Mesa/SkyWest Airlines	0	0		10	15	-33.3%
Delta/SkyWest/Compass Airlines	0	0		4	5	-20.0%
FedEx	0	0		0	0	
Hawaiian Airlines	0	2	-100.0%	2	3	-33.3%
JetBlue Airways	3	7	-57.1%	63	173	-63.6%
Southwest Airlines	0	0		0	0	
UPS	0	0		3	0	300.0%
<b>Subtotal 11PM-7AM</b>	<b>3</b>	<b>9</b>	<b>-66.7%</b>	<b>82</b>	<b>196</b>	<b>-58.2%</b>
<b>TOTAL</b>	<b>10</b>	<b>16</b>	<b>-37.5%</b>	<b>229</b>	<b>538</b>	<b>-57.4%</b>

Notes:

0.4% (10 of 2,813) of total commercial operations occurred between 10pm - 7am.

0.3 flights - Nightly average for all late night (10:00 PM—7:00 AM) commercial flights, includes unanticipated delays.

0.1 flights - Nightly average for commercial flights after 11 PM.

Of the 10 Late-Night Operations, 40% were due to mechanical issues, 20% were due to staffing-related issues, 10% were due to air traffic control conditions, 10% were due to poor weather conditions, 10% were due to medical reasons and 10% were due to unknown reasons.

<b>AIRPORT NOISE VIOLATIONS</b>						
<b>LGB Current Month &amp; Calendar Year-To-Date Statistics</b>						
<b>October 2019</b>						
<b>October</b>				<b>Calendar Year-To-Date</b>		
<b>Air Carrier Noise Violations</b>	<b>2019</b>	<b>2018</b>	<b>Change</b>	<b>2019</b>	<b>2018</b>	<b>Change</b>
American/Mesa Airlines	0	0		12	17	-29.4%
Delta/SkyWest/Compass	0	0		4	5	-20.0%
FedEx	0	0		0	0	
Hawaiian Airlines	0	2	-100.0%	2	3	-33.3%
JetBlue Airways	3	6	-50.0%	66	201	-67.2%
Southwest Airlines	0	0		1	0	100.0%
UPS	0	0		1	0	100.0%
<b>Subtotal</b>	<b>3</b>	<b>8</b>	<b>-62.5%</b>	<b>86</b>	<b>226</b>	<b>-61.9%</b>
<b>Commuter Noise Violations</b>	<b>2019</b>	<b>2018</b>	<b>Change</b>	<b>2019</b>	<b>2018</b>	<b>Change</b>
American/SkyWest Airlines	0	0		0	0	
Delta/SkyWest/Compass	0	0		0	0	
<b>Subtotal</b>	<b>0</b>	<b>0</b>		<b>0</b>	<b>0</b>	
<b>Non-Commercial Noise Violations</b>	<b>2019</b>	<b>2018</b>	<b>Change</b>	<b>2019</b>	<b>2018</b>	<b>Change</b>
All GA, Charter & Other	11	12	-8.3%	130	112	16.1%
<b>TOTAL</b>	<b>14</b>	<b>20</b>	<b>-30.0%</b>	<b>216</b>	<b>338</b>	<b>-36.1%</b>
<b>Monetary Fines</b>		<b>2019</b>	<b>2018</b>	<b>2019</b>	<b>2018</b>	
Airport Surcharges		\$1,700	\$3,000	\$31,300	\$60,300	
Consent Decree		\$18,000	\$36,000	\$360,000	\$936,000	
<b>TOTAL</b>		<b>\$19,700</b>	<b>\$39,000</b>	<b>\$391,300</b>	<b>\$996,300</b>	

<b>AIRPORT OPERATIONS</b>						
<b>LGB Current Month &amp; Calendar Year-To-Date Statistics</b>						
<b>October 2019</b>						
<b>October</b>				<b>Calendar Year-To-Date</b>		
<b>Airport Operations (FAA)</b>	<b>2019</b>	<b>2018</b>	<b>Change</b>	<b>2019</b>	<b>2018</b>	<b>Change</b>
Air Carrier + Commuter Carriers	2,813	2,614	7.6%	27,377	29,672	-7.7%
Air Taxi + General Aviation	28,441	21,203	34.1%	243,890	196,884	23.9%
Military Operations	98	109	-10.1%	1,022	1,235	-17.2%
<b>Total Aircraft Operations</b>	<b>31,352</b>	<b>23,926</b>	<b>31.0%</b>	<b>272,289</b>	<b>227,791</b>	<b>19.5%</b>

Notes:

0.04% (14 of 31,254) of the Airport's total aircraft operations (Commercial & GA) resulted in an aircraft noise violation.  
0.1% (3 of 2,813) of the Airport's Commercial operations (Commercial & Commuter) resulted in an aircraft noise violation.

# AIRCRAFT NOISE VIOLATORS

## October 2019

OWNERNAME	DATE	TIME	A/D	RWY	FLIGHT #	A/C TYPE	ORIG/DEST	SEL	LIMIT	STATUS
Private	10/2/2019	11:19:02	A	26R		PA44		90.5	88.0	VIO
Private	10/3/2019	11:11:11	A	26R		PA44		90.8	88.0	VIO
M13 Holding LLC	10/3/2019	15:42:06	A	26R		PC12		90.7	88.0	VIO
JetBlue Airways	10/3/2019	23:15:10	A	30	JBU347	A320	OAK	93.5	79.0	VIO + Alt Enf
Capt. Kids Inc.	10/4/2019	23:42:53	A	30		PA28		84.7	79.0	VIO
NetJets Inc.	10/18/2019	6:27:27	D	30		CL35		92.7	90.0	VIO
Vandelay America LLC	10/18/2019	10:04:45	D	26R		T6		104.7	92.0	VIO
Swift Air LLC	10/18/2019	23:23:54	D	30		B734		96.2	79.0	VIO
Keegan Organization LLC	10/21/2019	23:41:29	A	30		C25C		83.6	79.0	VIO
Svetfur Aviation LLC	10/22/2019	20:40:22	A	26R		C414		91.1	88.0	VIO
Go Far Aviation LLC	10/23/2019	8:39:43	D	26R		C525		94.9	92.0	VIO
JetBlue Airways	10/28/2019	2:36:10	A	30	JBU405	A320	ABQ	92.8	79.0	VIO + Alt Enf
JetBlue Airways	10/29/2019	0:56:52	A	30	JBU405	A320	SLC	93.7	79.0	VIO + Alt Enf
Platinum Equity LLC	10/29/2019	1:07:57	A	30		G650		86.8	79.0	VIO

**DEFINITIONS:**

**A/C Type** — Aircraft Type

**RWY** — Runway

**A/D**— Arrival / Departure

**SEL** — SENEL — Single Event Noise Exposure Level (dBA)

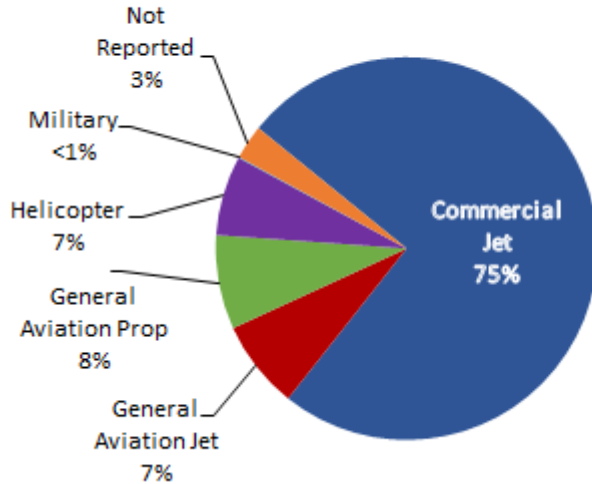
**ALT ENF** — Alternative Enforcement

**VIO**—Violation

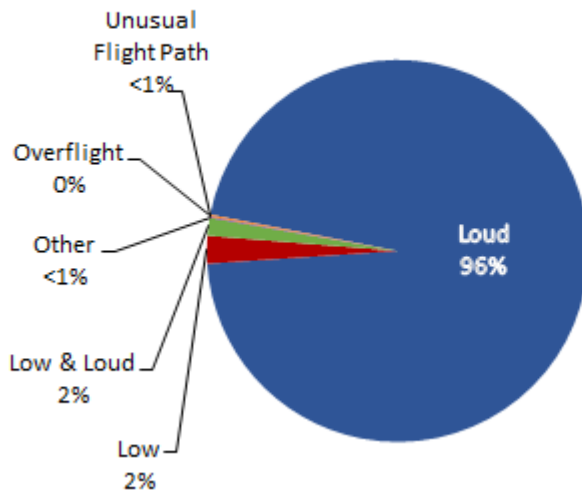
# LGB AIRCRAFT NOISE COMPLAINTS

## October 2019

### Complaints by Aircraft Types



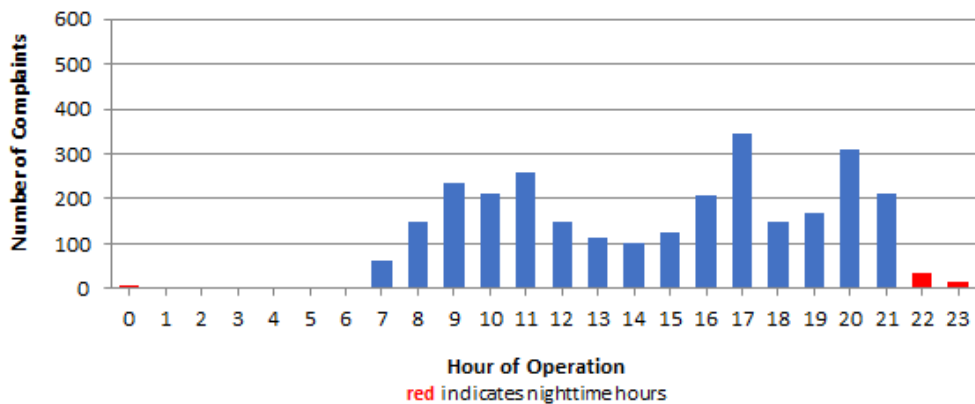
### Complaints by Concern



### Complaints by Zip Code

Zip Code	Complaints	Units
90278	323	3
90505	22	1
90731	1	1
90740	6	2
90803	1	1
90805	12	1
90807	42	14
90808	13	5
90815	5	4
92612	20	1
92615	4	1
92625	1	1
92626	403	1
92627	14	3
92629	3	1
92646	6	1
92647	661	5
92648	626	17
92649	664	4
92656	3	1
92660	7	5
92661	3	1
92662	3	3
92676	3	1
92807	6	2
92867	4	1
92869	1	1
Not Reported	8	6
<b>Grand Total</b>	<b>2,865</b>	<b>88</b>

### Complaints by Time of Operation





# long beach airport



## Long Beach Airport

4100 E. Donald Douglas Drive, Long Beach, CA 90808

[www.lgb.org](http://www.lgb.org) • [lgbapt@longbeach.gov](mailto:lgbapt@longbeach.gov)

Administration • (562) 570-2619