

## Airport Advisory Commission

**Jeffrey Anderson**  
Chair

**Wayne Chaney Sr.**  
Vice Chair

**Alvaro Castillo**

**Katie Larson**

**Rita Nayak**

**Miles Nevin**

**Geetanjali Reuben**

**Jeff Rowe**

**Mary Sophia**

## Airport Management

**Cynthia Guidry**  
Director

**Juan López-Ríos**  
Deputy Airport Director

**Ken Mason**  
Executive Assistant

**Claudia Lewis**  
Manager of Administration  
& Finance

**Ron Reeves**  
Airport Operations & Facilities  
Manager

**Ambi Thurai**  
Engineering Officer

**Dale Worsham**  
Administrative Officer

**Karl Zittel**  
Airside Operations Officer

**Matthew Brookes**  
Airport Properties Officer

**Scott Garrett**  
Facilities Management Officer

**Mony Chhey**  
Financial Services Officer

**Scott Korobkin**  
Superintendent of Safety and  
Security

**Kate Kuykendall**  
Public Affairs Officer

**Ryan McMullan**  
Noise & Environmental Affairs  
Officer



# Long Beach Airport Monthly Noise Report November 2019

**COMMERCIAL AIRCRAFT LATE NIGHT ACTIVITY**  
**LGB Current Month & Calendar Year-To-Date Statistics (10 PM- 7AM)**  
**November 2019**

November				Calendar Year-To-Date		
10PM - 11PM Activity	2019	2018	Change	2019	2018	Change
<b>Air Carrier &amp; Commuter Operations</b>	<b>2,854</b>	<b>2,531</b>	<b>12.8%</b>	<b>30,231</b>	<b>32,203</b>	<b>-6.1%</b>
American/Mesa/SkyWest Airlines	0	0		15	29	-48.3%
Delta/SkyWest/Compass Airlines	3	1	200.0%	26	19	36.8%
FedEx	0	0		0	0	
Hawaiian Airlines	0	0		3	2	50.0%
JetBlue Airways	8	8	0.0%	105	291	-63.9%
Southwest Airlines	0	0		9	10	-10.0%
UPS	0	1	-100.0%	0	1	-100.0%
<b>Subtotal 10PM-11PM</b>	<b>11</b>	<b>10</b>	<b>10.0%</b>	<b>158</b>	<b>352</b>	<b>-55.1%</b>
11PM- 7AM Activity	2019	2018	Change	2019	2018	Change
American/Mesa/SkyWest Airlines	0	0		10	15	-33.3%
Delta/SkyWest/Compass Airlines	0	1	-100.0%	4	6	-33.0%
FedEx	1	0	100.0%	1	0	100.0%
Hawaiian Airlines	0	1	-100.0%	2	4	-50.0%
JetBlue Airways	9	7	28.6%	72	180	-60.0%
Southwest Airlines	0	0		0	0	
UPS	0	1	-100.0%	3	1	200.0%
<b>Subtotal 11PM-7AM</b>	<b>10</b>	<b>10</b>	<b>0.0%</b>	<b>92</b>	<b>206</b>	<b>-55.3%</b>
<b>TOTAL</b>	<b>21</b>	<b>20</b>	<b>5.0%</b>	<b>250</b>	<b>558</b>	<b>-55.2%</b>

Notes:

0.7% (21 of 2,854) of total commercial operations occurred between 10pm - 7am.

0.7 flights - Nightly average for all late night (10:00 PM—7:00 AM) commercial flights, includes unanticipated delays.

0.3 flights - Nightly average for commercial flights after 11 PM.

Of the 21 Late-Night Operations, 33% were due to mechanical issues, 24% were due to staffing-related issues, 19% were due to poor weather conditions, 14% were due to unknown reasons and 10% occurred during the five-minute grace period.

**AIRPORT NOISE VIOLATIONS**  
**LGB Current Month & Calendar Year-To-Date Statistics**  
**November 2019**

November				Calendar Year-To-Date		
<b>Air Carrier Noise Violations</b>	<b>2019</b>	<b>2018</b>	<b>Change</b>	<b>2019</b>	<b>2018</b>	<b>Change</b>
American/Mesa Airlines	0	0		12	17	-29.4%
Delta/SkyWest/Compass	0	0		4	5	-20.0%
FedEx	1	0	100.0%	1	0	100.0%
Hawaiian Airlines	0	1	-100.0%	2	4	-50.0%
JetBlue Airways	10	4	150.0%	76	205	-62.9%
Southwest Airlines	0	0		1	0	100.0%
UPS	0	1	-100.0%	1	1	0.0%
<b>Subtotal</b>	<b>11</b>	<b>6</b>	<b>83.3%</b>	<b>97</b>	<b>232</b>	<b>-58.2%</b>
<b>Commuter Noise Violations</b>	<b>2019</b>	<b>2018</b>	<b>Change</b>	<b>2019</b>	<b>2018</b>	<b>Change</b>
American/SkyWest Airlines	0	0		0	0	
Delta/SkyWest/Compass	0	0		0	0	
<b>Subtotal</b>	<b>0</b>	<b>0</b>		<b>0</b>	<b>0</b>	
<b>Non-Commercial Noise Violations</b>	<b>2019</b>	<b>2018</b>	<b>Change</b>	<b>2019</b>	<b>2018</b>	<b>Change</b>
All GA, Charter & Other	6	10	-40.0%	136	122	11.5%
<b>TOTAL</b>	<b>17</b>	<b>16</b>	<b>6.3%</b>	<b>233</b>	<b>354</b>	<b>-34.2%</b>
<b>Monetary Fines</b>	<b>2019</b>	<b>2018</b>		<b>2019</b>	<b>2018</b>	
Airport Surcharges	\$2,700	\$2,200		\$34,000	\$62,500	
Consent Decree	\$36,000	\$24,000		\$396,000	\$960,000	
<b>TOTAL</b>	<b>\$38,700</b>	<b>\$26,200</b>		<b>\$430,000</b>	<b>\$1,022,500</b>	

**AIRPORT OPERATIONS**  
**LGB Current Month & Calendar Year-To-Date Statistics**  
**November 2019**

November				Calendar Year-To-Date		
<b>Airport Operations (FAA)</b>	<b>2019</b>	<b>2018</b>	<b>Change</b>	<b>2019</b>	<b>2018</b>	<b>Change</b>
Air Carrier + Commuter Carriers	2,854	2,531	12.8%	30,231	32,203	-6.1%
Air Taxi + General Aviation	22,546	21,057	7.1%	266,436	217,941	22.3%
Military Operations	93	91	2.2%	1,115	1,326	-15.9%
<b>Total Aircraft Operations</b>	<b>25,493</b>	<b>23,679</b>	<b>7.7%</b>	<b>297,782</b>	<b>251,470</b>	<b>18.4%</b>

Notes:

0.07% (17 of 25,400) of the Airport's total aircraft operations (Commercial & GA) resulted in an aircraft noise violation.  
0.4% (11 of 2,854) of the Airport's Commercial operations (Commercial & Commuter) resulted in an aircraft noise violation.

# AIRCRAFT NOISE VIOLATORS

## November 2019

OWNERNAME	DATE	TIME	A/D	RWY	FLIGHT #	A/C TYPE	ORIG/DEST	SEL	LIMIT	STATUS
Private	11/2/2019	23:05:29	D	30		G650		86.2	79.0	VIO
JetBlue Airways	11/8/2019	2:01:53	A	30	JBU405	A320	BOS	92.8	79.0	VIO + Alt Enf
JetBlue Airways	11/13/2019	0:06:20	A	30	JBU405	A320	BOS	93.7	79.0	VIO + Alt Enf
West Coast Charters LLC	11/14/2019	12:08:34	A	26R		B350		90.7	88.0	VIO
Blue Sky Mountain LLC	11/15/2019	23:10:08	A	30		C510		87.1	79.0	VIO
JetBlue Airways	11/16/2019	23:40:14	A	30	JBU1925	A320	SJC	92.1	79.0	VIO + Alt Enf
Federal Express	11/18/2019	23:36:45	D	30	FDX1351	A306	LAX	93.5	79.0	VIO
WJV658 LLC	11/22/2019	17:20:17	A	26R		BE76		90.2	88.0	VIO
N819AM LLC	11/22/2019	23:30:50	D	30		G150		92.1	79.0	VIO
Swift Air LLC	11/24/2019	0:12:26	A	30		B734		96.1	79.0	VIO
JetBlue Airways	11/26/2019	22:15:56	A	30	JBU405	A320	BOS	92.4	90.0	VIO
JetBlue Airways	11/27/2019	23:07:09	D	30	JBU1926	A320	SJC	90.6	79.0	VIO + Alt Enf
JetBlue Airways	11/27/2019	23:11:18	A	30	JBU405	A320	MSP	94.3	79.0	VIO + Alt Enf
JetBlue Airways	11/27/2019	23:19:17	A	30	JBU1013	A320	DEN	93.1	79.0	VIO + Alt Enf
JetBlue Airways	11/27/2019	23:28:16	A	30	JBU2507	A320	SEA	93.7	79.0	VIO + Alt Enf
JetBlue Airways	11/28/2019	0:18:35	D	30	JBU1006	A320	SEA	87.9	79.0	VIO + Alt Enf
JetBlue Airways	11/28/2019	1:41:32	A	30	JBU1925	A320	SJC	92.8	79.0	VIO + Alt Enf

**DEFINITIONS:**

**A/C Type** — Aircraft Type

**RWY** — Runway

**A/D** — Arrival / Departure

**SEL** — SENEL — Single Event Noise Exposure Level (dBA)

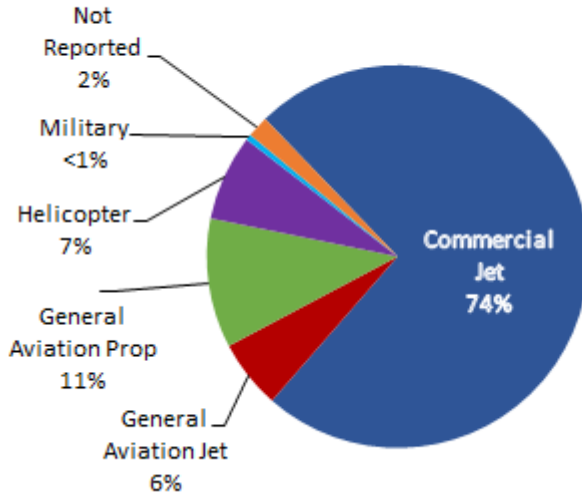
**ALT ENF** — Alternative Enforcement

**VIO** — Violation

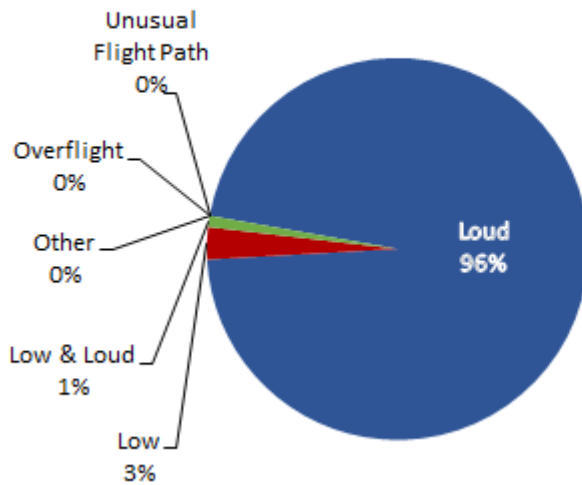
# LGB AIRCRAFT NOISE COMPLAINTS

## November 2019

### Complaints by Aircraft Types



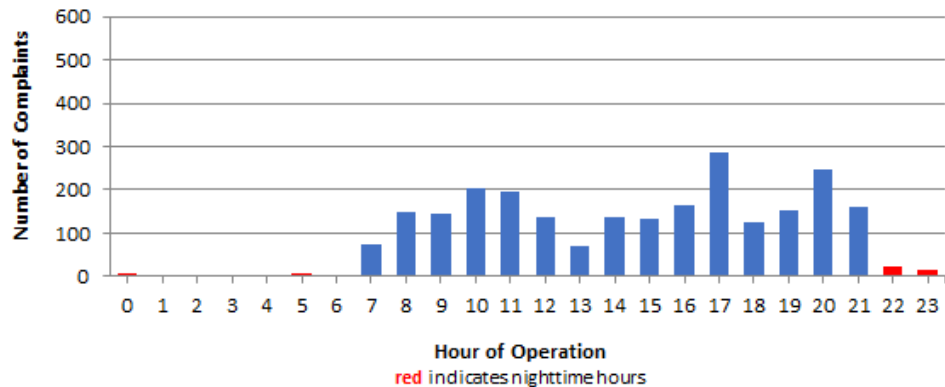
### Complaints by Concern



### Complaints by Zip Code

Zip Code	Complaints	Units
90254	2	1
90278	347	3
90505	2	1
90731	1	1
90740	1	1
90805	17	1
90807	24	10
90808	32	6
90815	1	1
92612	18	1
92615	7	1
92626	444	1
92627	14	2
92646	2	1
92647	746	5
92648	638	14
92649	80	6
92653	2	1
92656	8	2
92660	9	6
92661	2	1
92662	2	2
92677	2	2
92807	24	2
92869	1	1
Not Reported	7	6
<b>Grand Total</b>	<b>2,433</b>	<b>79</b>

### Complaints by Time of Operation





# long beach airport



## Long Beach Airport

4100 E. Donald Douglas Drive, Long Beach, CA 90808

[www.lgb.org](http://www.lgb.org) • [lgbapt@longbeach.gov](mailto:lgbapt@longbeach.gov)

Administration • (562) 570-2619