

## Airport Advisory Commission

**Wayne Chaney Sr.**  
Chair

**Jeffrey Anderson**  
Vice Chair

**Alvaro Castillo**

**Rita Nayak**

**Phil Ramsdale**

**Geetanjali Reuben**

**Jeff Rowe**

**Roland B. Scott, Jr.**

**Mary Sophiea**

## Airport Management

**Claudia Lewis**  
Interim Airport Director

**Juan López-Ríos**  
Deputy Airport Director

**Ken Mason**  
Executive Assistant

**Ron Reeves**  
Airport Operations Manager

**Ambi Thurai**  
Engineering Officer

**Dale Worsham**  
Administrative Officer

**Karl Zittel**  
Airside Operations Officer

**Matthew Brookes**  
Airport Properties Officer

**Scott Garrett**  
Facilities Management Officer

**Mony Chhey**  
Financial Services Officer

**Scott Korobkin**  
Superintendent of Safety and  
Security

**Ryan McMullan**  
Noise & Environmental Affairs  
Officer



# Long Beach Airport Monthly Noise Report January 2019

**COMMERCIAL AIRCRAFT LATE NIGHT ACTIVITY**  
**LGB Current Month & Calendar Year-To-Date Statistics (10 PM- 7AM)**  
**January 2019**

January				Calendar Year-To-Date		
10PM - 11PM Activity	2019	2018	Change	2019	2018	Change
<b>Air Carrier &amp; Commuter Operations</b>	<b>2,585</b>	<b>3,128</b>	<b>-17.4%</b>	<b>2,585</b>	<b>3,128</b>	<b>-17.4%</b>
American/Mesa/SkyWest Airlines	2	1	100.0%	2	1	100.0%
Delta/SkyWest/Compass Airlines	1	2	-50.0%	1	2	-50.0%
FedEx	0	0		0	0	
Hawaiian Airlines	2	0	200.0%	2	0	200.0%
JetBlue Airways	9	31	-71.0%	9	31	-71.0%
Southwest Airlines	0	1	-100.0%	0	1	-100.0%
UPS	0	0		0	0	
<b>Subtotal 10PM-11PM</b>	<b>14</b>	<b>35</b>	<b>-60.0%</b>	<b>14</b>	<b>35</b>	<b>-60.0%</b>
<b>11PM- 7AM Activity</b>	<b>2019</b>	<b>2018</b>	<b>Change</b>	<b>2019</b>	<b>2018</b>	<b>Change</b>
American/Mesa/SkyWest Airlines	0	1	-100.0%	0	1	-100.0%
Delta/SkyWest/Compass Airlines	0	1	-100.0%	0	1	-100.0%
FedEx	0	0		0	0	
Hawaiian Airlines	1	0	100.0%	1	0	100.0%
JetBlue Airways	7	31	-77.4%	7	31	-77.4%
Southwest Airlines	0	0		0	0	
UPS	0	0		0	0	
<b>Subtotal 11PM-7AM</b>	<b>8</b>	<b>33</b>	<b>-75.8%</b>	<b>8</b>	<b>33</b>	<b>-75.8%</b>
<b>TOTAL</b>	<b>22</b>	<b>68</b>	<b>-67.6%</b>	<b>22</b>	<b>68</b>	<b>-67.6%</b>

Notes:

0.9% (22 of 2,585) of total commercial operations occurred between 10pm - 7am.

0.7 flights - Nightly average for all late night (10:00 PM—7:00 AM) commercial flights, includes unanticipated delays.

0.3 flights - Nightly average for commercial flights after 11 PM.

Of the 22 Late-Night Operations, 46% were due to mechanical issues, 18% were due to ferry flights, 14% were due to air traffic control conditions, 9% occurred during the five-minute grace period, 9% were due to unknown reasons and 5% were due to catering issues.

**AIRPORT NOISE VIOLATIONS**  
**LGB Current Month & Calendar Year-To-Date Statistics**  
**January 2019**

January				Calendar Year-To-Date		
<b>Air Carrier Noise Violations</b>	<b>2019</b>	<b>2018</b>	<b>Change</b>	<b>2019</b>	<b>2018</b>	<b>Change</b>
American/Mesa Airlines	1	1	0.0%	1	1	0.0%
Delta/SkyWest/Compass	0	1	-100.0%	0	1	-100.0%
FedEx	0	0		0	0	
Hawaiian Airlines	1	0	100.0%	1	0	100.0%
JetBlue Airways	6	35	-82.9%	6	35	-82.9%
Southwest Airlines	0	0		0	0	
UPS	0	0		0	0	
<b>Subtotal</b>	<b>8</b>	<b>37</b>	<b>-78.4%</b>	<b>8</b>	<b>37</b>	<b>-78.4%</b>
<b>Commuter Noise Violations</b>	<b>2019</b>	<b>2018</b>	<b>Change</b>	<b>2019</b>	<b>2018</b>	<b>Change</b>
American/SkyWest Airlines	0	0		0	0	
Delta/SkyWest/Compass	0	0		0	0	
<b>Subtotal</b>	<b>0</b>	<b>0</b>		<b>0</b>	<b>0</b>	
<b>Non-Commercial Noise Violations</b>	<b>2019</b>	<b>2018</b>	<b>Change</b>	<b>2019</b>	<b>2018</b>	<b>Change</b>
All GA, Charter & Other	4	10	-60.0%	4	10	-60.0%
<b>TOTAL</b>	<b>12</b>	<b>47</b>	<b>-74.5%</b>	<b>12</b>	<b>47</b>	<b>-74.5%</b>
<b>Monetary Fines</b>	<b>2019</b>	<b>2018</b>		<b>2019</b>	<b>2018</b>	
Airport Surcharges	\$2,700	\$2,500		\$2,700	\$2,500	
Consent Decree	\$36,000	\$174,000		\$36,000	\$174,000	
<b>TOTAL</b>	<b>\$38,700</b>	<b>\$176,500</b>		<b>\$38,700</b>	<b>\$176,500</b>	

**AIRPORT OPERATIONS**  
**LGB Current Month & Calendar Year-To-Date Statistics**  
**January 2019**

January				Calendar Year-To-Date		
<b>Airport Operations (FAA)</b>	<b>2019</b>	<b>2018</b>	<b>Change</b>	<b>2019</b>	<b>2018</b>	<b>Change</b>
Air Carrier + Commuter Carriers	2,585	3,128	-17.4%	2,585	3,128	-17.4%
Air Taxi + General Aviation	21,957	22,145	-0.8%	21,957	22,145	-0.8%
Military Operations	119	132	-9.8%	119	132	-9.8%
<b>Total Aircraft Operations</b>	<b>24,661</b>	<b>25,405</b>	<b>-2.9%</b>	<b>24,661</b>	<b>25,405</b>	<b>-2.9%</b>

Notes:

0.1% (12 of 24,661) of the Airport's total aircraft operations (Commercial & GA) resulted in an aircraft noise violation.  
0.3% (8 of 2,585) of the Airport's Commercial operations (Commercial & Commuter) resulted in an aircraft noise violation.

# AIRCRAFT NOISE VIOLATORS

## January 2019

OWNERNAME	DATE	TIME	A/D	RWY	FLIGHT #	A/C TYPE	ORIG/DEST	SEL	LIMIT	STATUS
JetBlue Airways	1/1/2019	0:41:53	D	30	JBU6180	A320	RNO	83.4	79.0	VIO + Alt Enf
ECG Aviation Inc.	1/1/2019	15:54:52	A	26R		C310		92.5	88.0	VIO
Global Pilot Inc.	1/2/2019	3:40:30	A	30		BE35		83.7	79.0	VIO
Swift Air LLC	1/4/2019	23:08:00	D	30		B734		94.3	79.0	VIO
American Airlines	1/5/2019	22:52:08	A	30	ASH5791	CRJ9	PHX	92.3	90.0	VIO
JetBlue Airways	1/5/2019	23:13:46	A	30	JBU347	A320	OAK	93.1	79.0	VIO + Alt Enf
JetBlue Airways	1/7/2019	23:18:06	D	30	JBU6110	A320	AUS	87.8	79.0	VIO + Alt Enf
Hawaiian Airlines	1/11/2019	6:31:50	A	30	HAL70	A21N	HNL	94.4	90.0	VIO
JetBlue Airways	1/13/2019	0:49:58	A	30	JBU531	A320	SLC	93.5	79.0	VIO + Alt Enf
JetBlue Airways	1/15/2019	23:11:24	A	30	JBU679	A320	LAS	93.3	79.0	VIO + Alt Enf
JetBlue Airways	1/24/2019	23:08:05	A	26R	JBU679	A320	LAS	91.4	n/a	VIO + Alt Enf
IRG Wings LLC	1/31/2019	5:12:05	D	30		GALX		83.1	79.0	VIO

**DEFINITIONS:**

**A/C Type** — Aircraft Type

**RWY** — Runway

**A/D**— Arrival / Departure

**SEL** — SENEL — Single Event Noise Exposure Level (dBA)

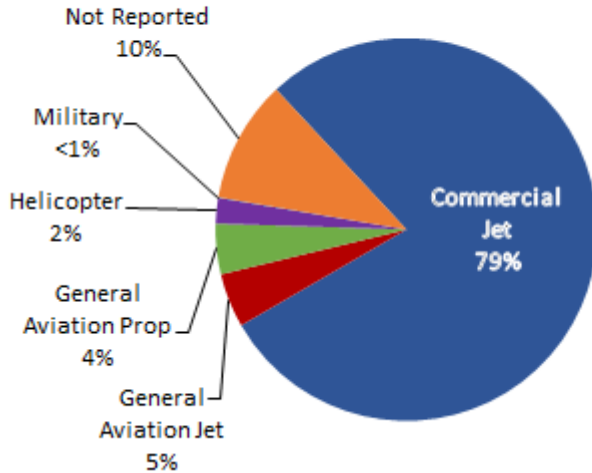
**ALT ENF** — Alternative Enforcement

**VIO**—Violation

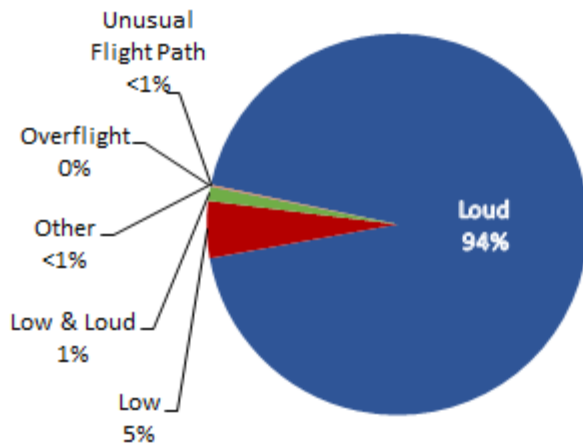
# LGB AIRCRAFT NOISE COMPLAINTS

## January 2019

### Complaints by Aircraft Types



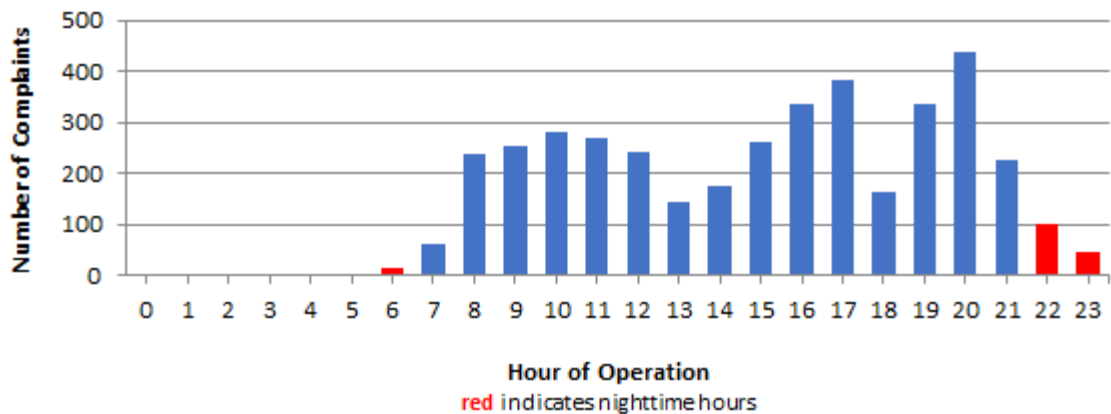
### Complaints by Concern



### Complaints by Zip Code

Zip Code	Complaints	Units
90278	204	3
90630	3	1
90712	4	3
90713	3	1
90731	1	1
90740	5	1
90802	1	1
90805	16	3
90807	25	12
90808	1	1
90815	1	1
92612	41	1
92626	372	1
92646	6	1
92647	936	5
92648	1,635	17
92649	680	5
92651	1	1
92660	3	1
92676	34	1
92677	2	1
92679	1	1
Not Reported	1	1
<b>Grand Total</b>	<b>3,976</b>	<b>64</b>

### Complaints by Time of Operation





# long beach airport



## Long Beach Airport

4100 E. Donald Douglas Drive, Long Beach, CA 90808

[www.lgb.org](http://www.lgb.org) • [lgbapt@longbeach.gov](mailto:lgbapt@longbeach.gov)

Administration • (562) 570-2619