

Airport Advisory Commission

Wayne Chaney Sr.
Chair

Jeffrey Anderson
Vice Chair

Alvaro Castillo

Rita Nayak

Phil Ramsdale

Geetanjali Reuben

Jeff Rowe

Roland B. Scott, Jr.

Mary Sophiea

Airport Management

Claudia Lewis
Interim Airport Director

Juan López-Ríos
Deputy Airport Director

Ken Mason
Executive Assistant

Ron Reeves
Airport Operations Manager

Ambi Thurai
Engineering Officer

Dale Worsham
Administrative Officer

Karl Zittel
Airsides Operations Officer

Matthew Brookes
Airport Properties Officer

Scott Garrett
Facilities Management Officer

Mony Chhey
Financial Services Officer

Scott Korobkin
Superintendent of Safety and Security

Ryan McMullan
Noise & Environmental Affairs Officer



Long Beach Airport Monthly Noise Report February 2019

COMMERCIAL AIRCRAFT LATE NIGHT ACTIVITY
LGB Current Month & Calendar Year-To-Date Statistics (10 PM- 7AM)
February 2019

February				Calendar Year-To-Date		
10PM - 11PM Activity	2019	2018	Change	2019	2018	Change
Air Carrier & Commuter Operations	2,301	2,863	-19.6%	4,886	5,991	-18.4%
American/Mesa/SkyWest Airlines	0	7	-100.0%	2	8	-75.0%
Delta/SkyWest/Compass Airlines	5	3	66.7%	6	5	20.0%
FedEx	0	0		0	0	
Hawaiian Airlines	0	0		2	0	
JetBlue Airways	22	37	-40.5%	31	68	-54.4%
Southwest Airlines	2	0		2	1	100.0%
UPS	0	0		0	0	
Subtotal 10PM-11PM	29	47	-38.3%	43	82	-47.6%
11PM- 7AM Activity	2019	2018	Change	2019	2018	Change
American/Mesa/SkyWest Airlines	0	0		0	1	-100.0%
Delta/SkyWest/Compass Airlines	0	1	-100.0%	0	2	-100.0%
FedEx	0	0		0	0	
Hawaiian Airlines	0	0		1	0	100.0%
JetBlue Airways	11	8	37.5%	18	39	-53.8%
Southwest Airlines	0	0		0	0	
UPS	0	0		0	0	
Subtotal 11PM-7AM	11	9	22.2%	19	42	-54.8%
TOTAL	40	56	-28.6%	62	124	-50.0%

Notes:

1.7% (40 of 2,301) of total commercial operations occurred between 10pm - 7am.

1.4 flights - Nightly average for all late night (10:00 PM—7:00 AM) commercial flights, includes unanticipated delays.

0.4 flights - Nightly average for commercial flights after 11 PM.

Of the 40 Late-Night Operations, 50% were due to mechanical issues, 20% were due to poor weather conditions, 13% were due to air traffic control conditions, 5% were due to staffing-related issues, 5% were due to ferry flights, 5% occurred during the five-minute grace period, and 3% were due to customer-related issues.

AIRPORT NOISE VIOLATIONS
LGB Current Month & Calendar Year-To-Date Statistics
February 2019

	February			Calendar Year-To-Date		
Air Carrier Noise Violations	2019	2018	Change	2019	2018	Change
American/Mesa Airlines	0	2	-100.0%	1	3	-66.7%
Delta/SkyWest/Compass	0	1	-100.0%	0	2	-100.0%
FedEx	0	0		0	0	
Hawaiian Airlines	0	0		1	0	100.0%
JetBlue Airways	11	14	-21.4%	17	49	-65.3%
Southwest Airlines	0	0		0	0	
UPS	0	0		0	0	
Subtotal	11	17	-35.3%	19	54	-64.8%
Commuter Noise Violations	2019	2018	Change	2019	2018	Change
American/SkyWest Airlines	0	0		0	0	
Delta/SkyWest/Compass	0	0		0	0	
Subtotal	0	0		0	0	
Non-Commercial Noise Violations	2019	2018	Change	2019	2018	Change
All GA, Charter & Other	13	13	0.0%	17	23	-26.1%
TOTAL	24	30	-20.0%	36	77	-53.2%
Monetary Fines	2019	2018		2019	2018	
Airport Surcharges	\$4,500	\$3,600		\$7,200	\$6,100	
Consent Decree	\$60,000	\$48,000		\$96,000	\$222,000	
TOTAL	\$64,500	\$51,600		\$103,200	\$228,100	

AIRPORT OPERATIONS
LGB Current Month & Calendar Year-To-Date Statistics
February 2019

	February			Calendar Year-To-Date		
Airport Operations (FAA)	2019	2018	Change	2019	2018	Change
Air Carrier + Commuter Carriers	2,301	2,863	-19.6%	4,886	5,991	-18.4%
Air Taxi + General Aviation	20,957	19,210	9.1%	42,914	41,355	3.8%
Military Operations	113	94	20.2%	232	226	2.7%
Total Aircraft Operations	23,371	22,167	5.4%	48,032	47,572	1.0%

Notes:

0.1% (24 of 23,371) of the Airport's total aircraft operations (Commercial & GA) resulted in an aircraft noise violation.
0.5% (11 of 2,301) of the Airport's Commercial operations (Commercial & Commuter) resulted in an aircraft noise violation.

AIRCRAFT NOISE VIOLATORS

February 2019

OWNERNAME	DATE	TIME	A/D	RWY	FLIGHT #	A/C TYPE	ORIG/DEST	SEL	LIMIT	STATUS
Private	2/1/2019	1:05:39	D	30		PA32		88.4	79.0	VIO
Feterik Aviation LLC	2/5/2019	6:53:51	A	30		FA50		95.0	90.0	VIO
BCJA LLC	2/6/2019	2:30:46	D	30		PRM1		81.4	79.0	VIO
JetBlue Airways	2/8/2019	23:17:00	A	30	JBU1635	A320	SFO	94.0	79.0	VIO + Alt Enf
JetBlue Airways	2/8/2019	23:19:11	A	30	JBU1013	A320	DEN	93.6	79.0	VIO + Alt Enf
JetBlue Airways	2/10/2019	23:05:46	A	30	JBU405	A320	BOS	93.2	79.0	VIO + Alt Enf
Idaho Associates LLC	2/11/2019	0:04:38	D	30		GLF4		83.1	79.0	VIO
Air Prestigio LLC	2/12/2019	1:02:36	A	30		GLF4		89.8	79.0	VIO
Pacific Int'l Vegeta- ble Marketing Inc.	2/13/2019	14:12:11	D	8L		C25C		90.6	88.0	VIO
Cathexis Holdings LP	2/13/2019	23:41:16	A	30		F900		88.0	79.0	VIO
JetBlue Airways	2/13/2019	23:58:53	A	30	JBU1013	A320	PHX	93.7	79.0	VIO + Alt Enf
Cathexis Holdings LP	2/14/2019	22:31:18	D	30		F900		95.8	90.0	VIO
JetBlue Airways	2/14/2019	23:17:22	A	30	JBU347	A320	OAK	93.9	79.0	VIO + Alt Enf
JetBlue Airways	2/15/2019	1:22:24	A	30	JBU365	A320	SMF	92.8	79.0	VIO + Alt Enf
JetBlue Airways	2/18/2019	0:24:55	A	30	JBU679	A320	LAS	93.8	79.0	VIO + Alt Enf
JetBlue Airways	2/18/2019	0:56:57	A	30	JBU1179	A320	LAS	92.7	79.0	VIO + Alt Enf
JetBlue Airways	2/19/2019	1:27:04	A	30	JBU679	A320	LAS	92.7	79.0	VIO + Alt Enf
Advanced Air LLC	2/20/2019	16:38:45	A	26R		B350		90.5	88.0	VIO
JetBlue Airways	2/21/2019	22:12:34	A	30	JBU6190	A320	RNO	93.4	90.0	VIO
Helinet Aviation Services LLC	2/22/2019	0:41:32	A	30		AS50		85.3	79.0	VIO
32Eagle LLC	2/23/2019	9:10:24	D	26R		C210		96.0	92.0	VIO
JetBlue Airways	2/26/2019	1:18:50	A	30	JBU679	A320	LAS	93.4	79.0	VIO + Alt Enf
Valley Logistics LLC	2/26/2019	4:24:43	D	30		E55P		85.9	79.0	VIO
Avanti Partners LLC	2/28/2019	17:34:45	A	26L		P180		98.5	93.0	VIO

DEFINITIONS:

A/C Type — Aircraft Type

RWY — Runway

A/D — Arrival / Departure

SEL — SENEL — Single Event Noise Exposure Level (dBA)

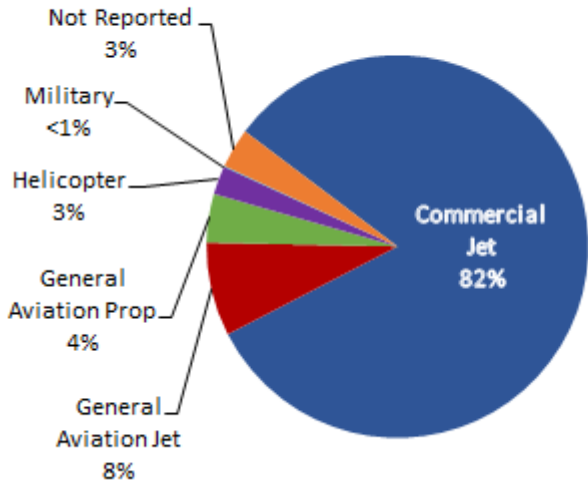
ALT ENF — Alternative Enforcement

VIO — Violation

LGB AIRCRAFT NOISE COMPLAINTS

February 2019

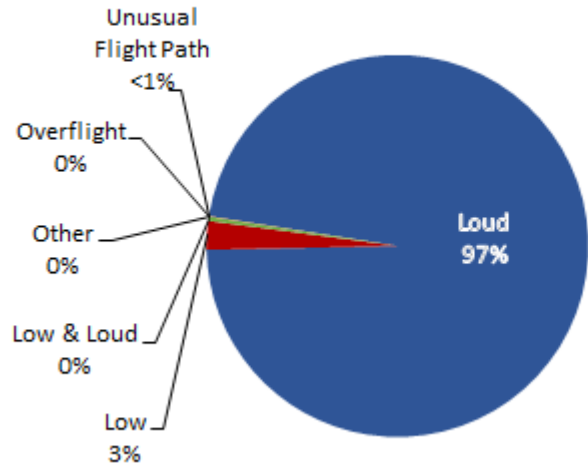
Complaints by Aircraft Types



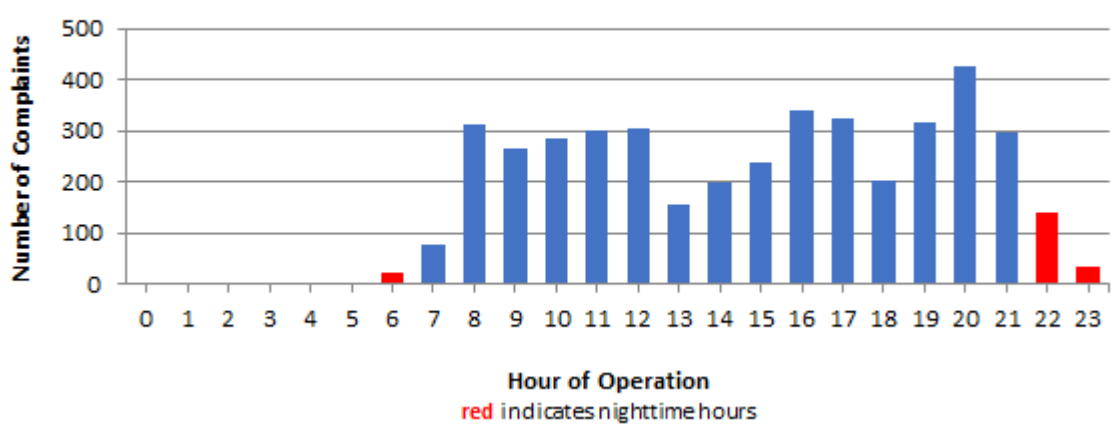
Complaints by Zip Code

Zip Code	Complaints	Units
90278	163	2
90505	2	1
90713	1	1
90731	1	1
90740	17	1
90755	1	1
90803	1	1
90805	18	2
90807	14	5
90808	1	1
90814	1	1
92612	36	1
92626	515	1
92647	834	4
92648	2,505	18
92649	127	4
92651	2	1
92660	2	1
92676	3	1
92677	2	1
Not Reported	4	4
Grand Total	4,250	53

Complaints by Concern



Complaints by Time of Operation





long beach airport



Long Beach Airport

4100 E. Donald Douglas Drive, Long Beach, CA 90808

www.lgb.org • lgbapt@longbeach.gov

Administration • (562) 570-2619