

Airport Advisory Commission

Wayne Chaney Sr.
Chair

Jeffrey Anderson
Vice Chair

Alvaro Castillo

Rita Nayak

Phil Ramsdale

Geetanjali Reuben

Jeff Rowe

Roland B. Scott, Jr.

Mary Sophiea

Airport Management

Claudia Lewis
Interim Airport Director

Juan López-Ríos
Deputy Airport Director

Ken Mason
Executive Assistant

Ron Reeves
Airport Operations Manager

Ambi Thurai
Engineering Officer

Dale Worsham
Administrative Officer

Karl Zittel
Airsides Operations Officer

Matthew Brookes
Airport Properties Officer

Scott Garrett
Facilities Management Officer

Mony Chhey
Financial Services Officer

Scott Korobkin
Superintendent of Safety and Security

Ryan McMullan
Noise & Environmental Affairs Officer



long beach
airport



Long Beach Airport Monthly Noise Report March 2019

COMMERCIAL AIRCRAFT LATE NIGHT ACTIVITY
LGB Current Month & Calendar Year-To-Date Statistics (10 PM- 7AM)
March 2019

March				Calendar Year-To-Date		
10PM - 11PM Activity	2019	2018	Change	2019	2018	Change
Air Carrier & Commuter Operations	2,593	3,206	-19.1%	7,479	9,197	-18.7%
American/Mesa/SkyWest Airlines	0	2	-100.0%	2	10	-80.0%
Delta/SkyWest/Compass Airlines	5	4	25.0%	11	9	22.2%
FedEx	0	0		0	0	
Hawaiian Airlines	1	0	100.0%	3	0	300.0%
JetBlue Airways	13	53	-75.5%	44	121	-63.6%
Southwest Airlines	1	0	100.0%	3	1	200.0%
UPS	0	0		0	0	
Subtotal 10PM-11PM	20	59	-66.1%	63	141	-55.3%
11PM- 7AM Activity	2019	2018	Change	2019	2018	Change
American/Mesa/SkyWest Airlines	0	1	-100.0%	0	2	-100.0%
Delta/SkyWest/Compass Airlines	3	1	200.0%	3	3	0.0%
FedEx	0	0		0	0	
Hawaiian Airlines	0	0		1	0	100.0%
JetBlue Airways	4	24	-83.3%	22	63	-65.1%
Southwest Airlines	0	0		0	0	
UPS	1	0	100.0%	1	0	100.0%
Subtotal 11PM-7AM	8	26	-69.2%	27	68	-60.3%
TOTAL	28	85	-67.1%	90	209	-56.9%

Notes:

1.1% (28 of 2,593) of total commercial operations occurred between 10pm - 7am.

0.9 flights - Nightly average for all late night (10:00 PM—7:00 AM) commercial flights, includes unanticipated delays.

0.3 flights - Nightly average for commercial flights after 11 PM.

Of the 28 Late-Night Operations, 46% were due to mechanical issues, 14% were due to staffing-related issues, 14% were due to unknown reasons, 7% were due to poor weather conditions, 7% were due to air traffic control conditions, 7% occurred during the five-minute grace period, and 4% were due to ferry flight operations.

AIRPORT NOISE VIOLATIONS						
LGB Current Month & Calendar Year-To-Date Statistics						
March 2019						
March				Calendar Year-To-Date		
Air Carrier Noise Violations	2019	2018	Change	2019	2018	Change
American/Mesa Airlines	0	2	-100.0%	1	5	-80.0%
Delta/SkyWest/Compass	2	1	100.0%	2	3	-33.3%
FedEx	0	0		0	0	
Hawaiian Airlines	0	0		1	0	100.0%
JetBlue Airways	7	29	-75.9%	24	78	-69.2%
Southwest Airlines	0	0		0	0	
UPS	1	0	100.0%	1	0	100.0%
Subtotal	10	32	-68.8%	29	86	-66.3%
Commuter Noise Violations	2019	2018	Change	2019	2018	Change
American/SkyWest Airlines	0	0		0	0	
Delta/SkyWest/Compass	0	0		0	0	
Subtotal	0	0		0	0	
Non-Commercial Noise Violations	2019	2018	Change	2019	2018	Change
All GA, Charter & Other	14	10	40.0%	31	33	-6.1%
TOTAL	24	42	-42.9%	60	119	-49.6%
Monetary Fines	2019	2018		2019	2018	
Airport Surcharges	\$3,300	\$10,200		\$10,500	\$16,300	
Consent Decree	\$24,000	\$120,000		\$120,000	\$342,000	
TOTAL	\$27,300	\$130,200		\$130,500	\$358,300	

AIRPORT OPERATIONS						
LGB Current Month & Calendar Year-To-Date Statistics						
March 2019						
March				Calendar Year-To-Date		
Airport Operations (FAA)	2019	2018	Change	2019	2018	Change
Air Carrier + Commuter Carriers	2,593	3,206	-19.1%	7,479	9,197	-18.7%
Air Taxi + General Aviation	23,314	18,492	26.1%	66,228	59,847	10.7%
Military Operations	121	141	-14.2%	353	367	-3.8%
Total Aircraft Operations	26,028	21,839	19.2%	74,060	69,411	6.7%

Notes:

0.1% (24 of 25,907) of the Airport's total aircraft operations (Commercial & GA) resulted in an aircraft noise violation.
0.4% (10 of 2,593) of the Airport's Commercial operations (Commercial & Commuter) resulted in an aircraft noise violation.

AIRCRAFT NOISE VIOLATORS

March 2019

OWNERNAME	DATE	TIME	A/D	RWY	FLIGHT #	A/C TYPE	ORIG/DEST	SEL	LIMIT	STATUS
Cinema Aircraft Exec. Transportation LLC	3/1/2019	22:44:20	A	30		GLF4		93.9	90.0	VIO
Delta / SkyWest / Compass Airlines	3/1/2019	23:26:24	A	30	CPZ5807	E75S	SLC	92.5	79.0	VIO
JetBlue Airways	3/3/2019	0:51:18	A	30	JBU405	A320	ABQ	94.5	79.0	VIO + Alt Enf
JetBlue Airways	3/3/2019	22:38:48	A	30	JBU1013	A320	JFK	93.8	90.0	VIO
Private	3/5/2019	23:24:54	A	30		C501		84.2	79.0	VIO
JetBlue Airways	3/6/2019	0:03:09	A	30	JBU6105	A320	JFK	91.7	79.0	VIO + Alt Enf
NetJets Inc.	3/7/2019	5:51:04	A	30		C680		87.2	79.0	VIO
JetBlue Airways	3/8/2019	22:48:46	A	30	JBU679	A320	LAS	93.6	90.0	VIO
Delta / SkyWest / Compass Airlines	3/8/2019	23:36:57	A	30	CPZ5742	E75L	SLC	92.9	79.0	VIO
Private	3/8/2019	23:53:24	D	30		M20P		83.2	79.0	VIO
Mensa Aviation	3/10/2019	5:47:17	D	30		C25C		88.7	79.0	VIO
JetBlue Airways	3/11/2019	0:21:33	A	30	JBU1013	A320	JFK	93.3	79.0	VIO + Alt Enf
Private	3/11/2019	9:17:50	D	26R		PA30		94.4	92.0	VIO
Private	3/13/2019	23:18:24	D	30		BE55		88.9	79.0	VIO
UPS	3/15/2019	1:10:13	D	30		B763		97.6	79.0	VIO
Chrysler Aviation Inc.	3/17/2019	0:15:06	A	30		C560		82.9	79.0	VIO
Private	3/17/2019	12:27:12	A	26L		C336		100.2	93.0	VIO
Helinet Aviation Services LLC	3/22/2019	0:54:56	A	30		AS30		87.7	79.0	VIO
Point to Point LLC	3/22/2019	12:23:19	A	26R		SR22		95.0	92.0	VIO
Thienes Engineering Inc.	3/27/2019	0:27:43	A	30		C525		86.8	79.0	VIO
Joseph Aviation	3/28/2019	11:41:33	A	30		GLF3		104.0	101.5	VIO
Metro-Jet LLC	3/28/2019	23:05:09	A	30		SW4		85.6	79.0	VIO
JetBlue Airways	3/28/2019	23:09:05	A	30	JBU1013	A320	JFK	93.7	79.0	VIO + Alt Enf
JetBlue Airways	3/29/2019	22:07:32	D	30	JBU504	A320	BOS	94.8	90.0	VIO

DEFINITIONS:

A/C Type — Aircraft Type

RWY — Runway

A/D — Arrival / Departure

SEL — SENEL — Single Event Noise Exposure Level (dBA)

ALT ENF — Alternative Enforcement

VIO — Violation

AIR CARRIER NOISE BUDGET PERFORMANCE

April 2018 - March 2019

RMT #	NOISE BUDGET	ACTUAL	PERCENT BUDGET USED
9	70.7	57.2	81.0%
10	84.6	76.8	90.8%

DEFINITIONS:

RMT — Remote Monitoring Terminal

TOTAL NOISE BUDGET PERFORMANCE

April 2018 - March 2019

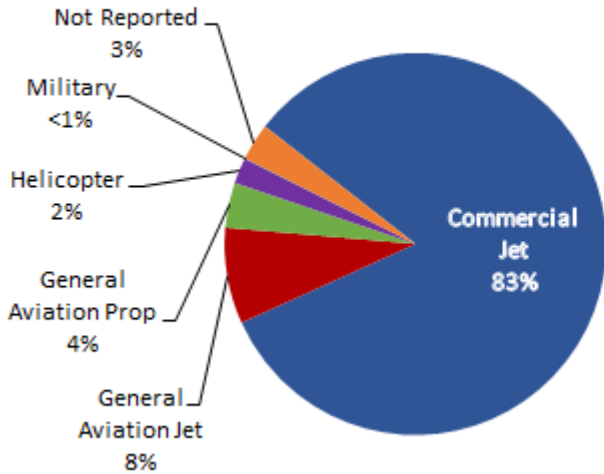
RMT #	NOISE BUDGET	ACTUAL	PERCENT BUDGET USED
9	102.7	69.9	68.1%
10	120.9	91.7	75.9%

Source: LGB staff calculations

LGB AIRCRAFT NOISE COMPLAINTS

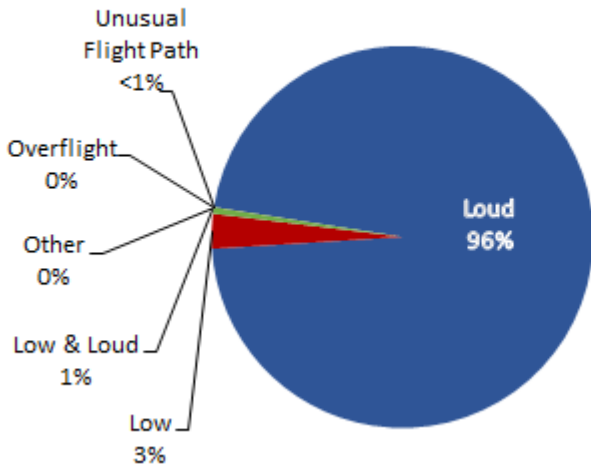
March 2019

Complaints by Aircraft Types

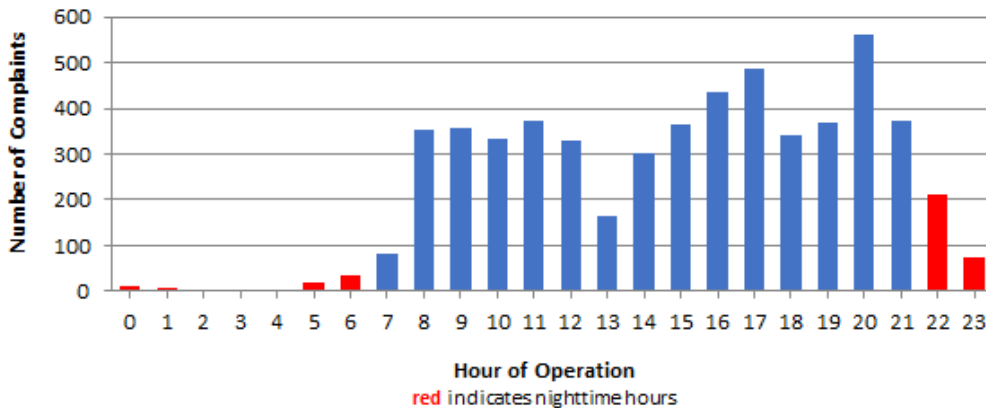


Complaints by Zip Code		
Zip Code	Complaints	Units
90278	236	2
90713	1	1
90731	1	1
90740	10	2
90755	1	1
90805	17	1
90807	14	8
90808	5	3
92612	25	1
92626	460	2
92646	1	1
92647	1,109	5
92648	3,045	19
92649	640	4
92651	5	1
92660	2	1
92677	3	1
Not Reported	8	7
Grand Total	5,583	61

Complaints by Concern



Complaints by Time of Operation





long beach airport



Long Beach Airport

4100 E. Donald Douglas Drive, Long Beach, CA 90808

www.lgb.org • lgbapt@longbeach.gov

Administration • (562) 570-2619