

## Airport Advisory Commission

**Jeffrey Anderson**  
Chair

**Wayne Chaney Sr.**  
Vice Chair

**Alvaro Castillo**

**Katie Larson**

**Rita Nayak**

**Miles Nevin**

**Geetanjali Reuben**

**Jeff Rowe**

**Mary Sophiea**

## Airport Management

**Claudia Lewis**  
Interim Airport Director

**Juan López-Ríos**  
Deputy Airport Director

**Ken Mason**  
Executive Assistant

**Ron Reeves**  
Airport Operations Manager

**Ambi Thurai**  
Engineering Officer

**Dale Worsham**  
Administrative Officer

**Karl Zittel**  
Airsides Operations Officer

**Matthew Brookes**  
Airport Properties Officer

**Scott Garrett**  
Facilities Management Officer

**Mony Chhey**  
Financial Services Officer

**Scott Korobkin**  
Superintendent of Safety and  
Security

**Ryan McMullan**  
Noise & Environmental Affairs  
Officer



**long beach**  
airport



# Long Beach Airport Monthly Noise Report May 2019

**COMMERCIAL AIRCRAFT LATE NIGHT ACTIVITY**  
**LGB Current Month & Calendar Year-To-Date Statistics (10 PM- 7AM)**  
**May 2019**

				Calendar Year-To-Date		
				2019		
				2018		
				Change		
				2019		
				2018		
				Change		
<b>May</b>						
<b>10PM - 11PM Activity</b>	<b>2019</b>	<b>2018</b>	<b>Change</b>	<b>2019</b>	<b>2018</b>	<b>Change</b>
<b>Air Carrier &amp; Commuter Operations</b>	<b>2,863</b>	<b>3,160</b>	<b>-9.4%</b>	<b>13,048</b>	<b>15,437</b>	<b>-15.5%</b>
American/Mesa/SkyWest Airlines	3	6	-50.0%	5	19	-73.7%
Delta/SkyWest/Compass Airlines	1	2	-50.0%	13	11	18.2%
FedEx	0	0		0	0	
Hawaiian Airlines	0	0		3	0	300.0%
JetBlue Airways	8	35	-77.1%	62	186	-66.7%
Southwest Airlines	1	3	-66.7%	4	7	-42.9%
UPS	0	0		0	0	
<b>Subtotal 10PM-11PM</b>	<b>13</b>	<b>46</b>	<b>-71.7%</b>	<b>87</b>	<b>223</b>	<b>-61.0%</b>
<b>11PM- 7AM Activity</b>	<b>2019</b>	<b>2018</b>	<b>Change</b>	<b>2019</b>	<b>2018</b>	<b>Change</b>
American/Mesa/SkyWest Airlines	2	0	200.0%	2	2	0.0%
Delta/SkyWest/Compass Airlines	0	0		3	4	-25.0%
FedEx	0	0		0	0	
Hawaiian Airlines	1	0	100.0%	2	0	200.0%
JetBlue Airways	5	24	-79.2%	33	104	-68.3%
Southwest Airlines	0	0		0	0	
UPS	0	0		2	0	200.0%
<b>Subtotal 11PM-7AM</b>	<b>8</b>	<b>24</b>	<b>-66.7%</b>	<b>42</b>	<b>110</b>	<b>-61.8%</b>
<b>TOTAL</b>	<b>21</b>	<b>70</b>	<b>-70.0%</b>	<b>129</b>	<b>333</b>	<b>-61.3%</b>

Notes:

0.7% (21 of 2,863) of total commercial operations occurred between 10pm - 7am.

0.7 flights - Nightly average for all late night (10:00 PM—7:00 AM) commercial flights, includes unanticipated delays.

0.3 flights - Nightly average for commercial flights after 11 PM.

Of the 21 Late-Night Operations, 29% were due to unknown reasons, 24% were due to mechanical issues, 24% were due to poor weather conditions, 14% occurred during the five-minute grace period, 5% were due to air traffic control conditions and 5% were due to staffing-related issues.

<b>AIRPORT NOISE VIOLATIONS</b>						
<b>LGB Current Month &amp; Calendar Year-To-Date Statistics</b>						
<b>May 2019</b>						
<b>May</b>				<b>Calendar Year-To-Date</b>		
<b>Air Carrier Noise Violations</b>	<b>2019</b>	<b>2018</b>	<b>Change</b>	<b>2019</b>	<b>2018</b>	<b>Change</b>
American/Mesa Airlines	3	0	300.0%	4	5	-20.0%
Delta/SkyWest/Compass	0	0		2	4	-50.0%
FedEx	0	0		0	0	
Hawaiian Airlines	1	0	100.0%	2	0	200.0%
JetBlue Airways	4	25	-84.0%	36	124	-71.0%
Southwest Airlines	0	0		0	0	
UPS	0	0		1	0	100.0%
<b>Subtotal</b>	<b>8</b>	<b>25</b>	<b>-68.0%</b>	<b>45</b>	<b>133</b>	<b>-66.2%</b>
<b>Commuter Noise Violations</b>	<b>2019</b>	<b>2018</b>	<b>Change</b>	<b>2019</b>	<b>2018</b>	<b>Change</b>
American/SkyWest Airlines	0	0		0	0	
Delta/SkyWest/Compass	0	0		0	0	
<b>Subtotal</b>	<b>0</b>	<b>0</b>		<b>0</b>	<b>0</b>	
<b>Non-Commercial Noise Violations</b>	<b>2019</b>	<b>2018</b>	<b>Change</b>	<b>2019</b>	<b>2018</b>	<b>Change</b>
All GA, Charter & Other	14	13	7.7%	61	57	7.0%
<b>TOTAL</b>	<b>22</b>	<b>38</b>	<b>-42.1%</b>	<b>106</b>	<b>190</b>	<b>-44.2%</b>
<b>Monetary Fines</b>	<b>2019</b>	<b>2018</b>		<b>2019</b>	<b>2018</b>	
Airport Surcharges	\$2,700	\$7,900		\$16,300	\$31,200	
Consent Decree	\$24,000	\$120,000		\$180,000	\$558,000	
<b>TOTAL</b>	<b>\$26,700</b>	<b>\$127,900</b>		<b>\$196,300</b>	<b>\$589,200</b>	

<b>AIRPORT OPERATIONS</b>						
<b>LGB Current Month &amp; Calendar Year-To-Date Statistics</b>						
<b>May 2019</b>						
<b>May</b>				<b>Calendar Year-To-Date</b>		
<b>Airport Operations (FAA)</b>	<b>2019</b>	<b>2018</b>	<b>Change</b>	<b>2019</b>	<b>2018</b>	<b>Change</b>
Air Carrier + Commuter Carriers	2,863	3,160	-9.4%	13,048	15,437	-15.5%
Air Taxi + General Aviation	23,362	19,783	18.1%	112,400	100,223	12.1%
Military Operations	83	185	-55.1%	575	701	-18.0%
<b>Total Aircraft Operations</b>	<b>26,308</b>	<b>23,128</b>	<b>13.7%</b>	<b>126,023</b>	<b>116,361</b>	<b>8.3%</b>

Notes:

0.1% (22 of 26,225) of the Airport's total aircraft operations (Commercial & GA) resulted in an aircraft noise violation.  
0.3% (8 of 2,863) of the Airport's Commercial operations (Commercial & Commuter) resulted in an aircraft noise violation.

# AIRCRAFT NOISE VIOLATORS

## May 2019

OWNERNAME	DATE	TIME	A/D	RWY	FLIGHT #	A/C TYPE	ORIG/DEST	SEL	LIMIT	STATUS
N510TL LLC	5/1/2019	6:28:02	A	30		BE40		92.5	90.0	VIO
American Airlines	5/4/2019	1:03:06	A	30	ASH5719	CRJ9	PHX	91.9	79.0	VIO
Aikawa Medical Management Inc	5/4/2019	23:13:12	A	30		C680		86.2	79.0	VIO
JetBlue Airways	5/7/2019	1:31:08	A	30	JBU405	A320	BOS	93.7	79.0	VIO + Alt Enf
Aircraft Guaranty Corp. Trustee	5/7/2019	23:40:20	A	30		P46T		88.9	79.0	VIO
American Airlines	5/8/2019	23:55:57	A	26R	ASH5719	CRJ9	PHX	92.5	N/A	VIO
Private	5/13/2019	0:24:51	D	30		BE35		83.1	79.0	VIO
Glacier Aviation Inc	5/17/2019	5:48:32	D	30		C750		83.3	79.0	VIO
Murray Company	5/17/2019	16:08:03	D	26R		C340		95	92.0	VIO
Private	5/18/2019	9:22:20	D	26R		T5		96.1	92.0	VIO
Keegan Organization LLC	5/18/2019	23:22:22	A	30		C25C		81.8	79.0	VIO
Hawaiian Airlines	5/20/2019	5:14:20	A	30	HAL70	A21N	HNL	93.9	79.0	VIO
GHS Leasing Co.	5/21/2019	5:48:26	A	30		LJ60		85.4	79.0	VIO
DB Franchising USA LLC	5/21/2019	23:44:02	D	30		C441		90.3	79.0	VIO
American Airlines	5/24/2019	22:26:52	A	30	ASH5719	CRJ9	PHX	92.5	90.0	VIO
JF LLC	5/26/2019	15:07:25	D	26R		C25C		94.3	92.0	VIO
JetBlue Airways	5/26/2019	23:08:07	D	30	JBU6110	A320	SMF	86.5	79.0	VIO + Alt Enf
Silver Creek Aviation Services	5/29/2019	5:36:54	D	30		C208		88.3	79.0	VIO
Business Aviation Consultants Inc	5/30/2019	12:53:30	D	26R		BE55		94.2	92.0	VIO
JetBlue Airways	5/30/2019	23:33:08	A	30	JBU679	A320	LAS	93	79.0	VIO + Alt Enf
N767CJ LLC	5/31/2019	4:34:46	D	30		H25C		88.5	79.0	VIO
JetBlue Airways	5/31/2019	23:22:36	A	30	JBU405	A320	BOS	93.1	79.0	VIO + Alt Enf

**DEFINITIONS:**

**A/C Type** — Aircraft Type

**RWY** — Runway

**A/D** — Arrival / Departure

**SEL** — SENEL — Single Event Noise Exposure Level (dBA)

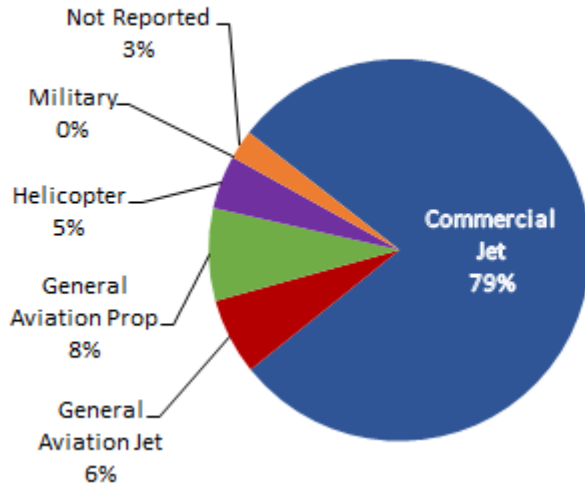
**ALT ENF** — Alternative Enforcement

**VIO** — Violation

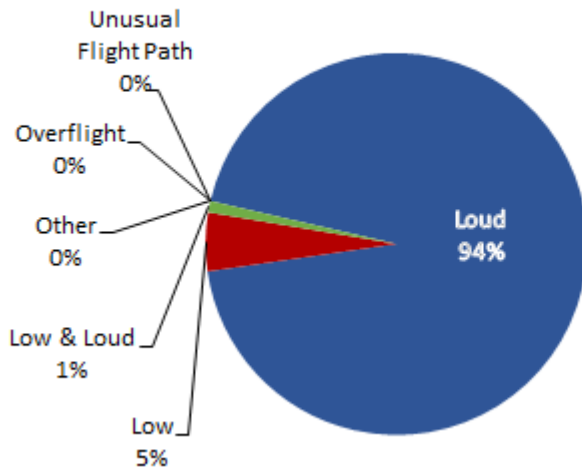
# LGB AIRCRAFT NOISE COMPLAINTS

## May 2019

### Complaints by Aircraft Types



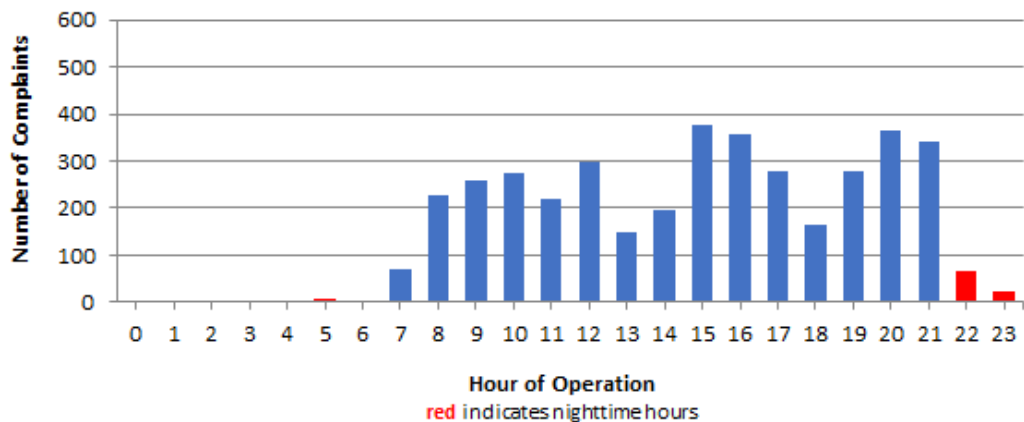
### Complaints by Concern



### Complaints by Zip Code

Zip Code	Complaints	Units
90254	4	1
90278	118	3
90505	2	1
90731	1	1
90740	8	1
90755	1	1
90803	1	1
90804	1	1
90805	25	1
90806	1	1
90807	22	6
90808	5	3
90814	1	1
90815	6	2
92612	46	1
92626	609	1
92629	3	1
92647	1,068	7
92648	1,273	18
92649	724	3
92651	9	2
92656	1	1
92660	8	2
92663	2	1
92676	5	1
92677	8	3
Not Reported	6	6
<b>Grand Total</b>	<b>3,958</b>	<b>71</b>

### Complaints by Time of Operation





# long beach airport



## Long Beach Airport

4100 E. Donald Douglas Drive, Long Beach, CA 90808

[www.lgb.org](http://www.lgb.org) • [lgbapt@longbeach.gov](mailto:lgbapt@longbeach.gov)

Administration • (562) 570-2619