

Airport Advisory Commission

Alvaro Castillo
Chair

Wayne Chaney Sr.
Vice Chair

Jeffrey Anderson

Katie Larson

Rita Nayak

Miles Nevin

Geetanjali Reuben

Jeff Rowe



Airport Management

Cynthia Guidry
Director

Juan López-Ríos
Deputy Airport Director

Ken Mason
Executive Assistant

Claudia Lewis
Manager of Administration
& Finance

Ron Reeves
Airport Operations & Facilities
Manager

Ambi Thurai
Engineering Officer

Dale Worsham
Administrative Officer

Karl Zittel
Airsides Operations Officer

Matthew Brookes
Airport Properties Officer

Scott Garrett
Facilities Management Officer

Mony Chhey
Financial Services Officer

Scott Korobkin
Superintendent of Safety and
Security

Kate Kuykendall
Public Affairs Officer

Ryan McMullan
Noise & Environmental Affairs
Officer



Long Beach Airport Monthly Noise Report July 2020

COMMERCIAL AIRCRAFT LATE NIGHT ACTIVITY
LGB Current Month & Calendar Year-To-Date Statistics (10 PM- 7AM)
July 2020

July				Calendar Year-To-Date		
10PM - 11PM Activity	2020	2019	Change	2020	2019	Change
Air Carrier & Commuter Operations	1,150	2,933	-60.8%	11,372	18,805	-39.5%
American/Mesa/SkyWest Airlines	0	4	-100.0%	0	13	-100.0%
Delta/SkyWest/Compass Airlines	0	1	-100.0%	7	19	-63.2%
FedEx	0	0		0	0	
Hawaiian Airlines	0	0		1	3	-66.7%
JetBlue Airways	1	10	-90.0%	22	77	-71.4%
Southwest Airlines	0	2	-100.0%	0	7	-100.0%
UPS	0	0		0	0	
Subtotal 10PM-11PM	1	17	-94.1%	30	119	-74.8%
11PM- 7AM Activity	2020	2019	Change	2020	2019	Change
American/Mesa/SkyWest Airlines	0	4	-100.0%	0	9	-100.0%
Delta/SkyWest/Compass Airlines	0	1	-100.0%	0	4	-100.0%
FedEx	0	0		0	0	
Hawaiian Airlines	0	0		2	2	0.0%
JetBlue Airways	1	10	-90.0%	18	51	-64.7%
Southwest Airlines	0	0		0	0	
UPS	0	0		0	2	-100.0%
Subtotal 11PM-7AM	1	15	-93.3%	20	68	-70.6%
TOTAL	2	32	-93.8%	50	187	-73.3%

Notes:

0.2% (2 of 1,150) of total commercial operations occurred between 10pm - 7am.

0.06 flights - Nightly average for all late night (10:00 PM—7:00 AM) commercial flights, includes unanticipated delays.

0.03 flights - Nightly average for commercial flights after 11 PM.

AIRPORT NOISE VIOLATIONS						
LGB Current Month & Calendar Year-To-Date Statistics						
July 2020						
July				Calendar Year-To-Date		
Air Carrier Noise Violations	2020	2019	Change	2020	2019	Change
American/Mesa Airlines	0	4	-100.0%	0	11	-100.0%
Delta/SkyWest/Compass	0	1	-100.0%	1	4	-75.0%
FedEx	0	0		0	0	
Hawaiian Airlines	0	0		2	2	0.0%
JetBlue Airways	1	10	-90.0%	16	54	-70.4%
Southwest Airlines	0	0		0	0	
UPS	0	0		0	1	-100.0%
Subtotal	1	15	-93.3%	19	72	-73.6%
Commuter Noise Violations	2020	2019	Change	2020	2019	Change
American/SkyWest Airlines	0	0		0	0	
Delta/SkyWest/Compass	0	0		0	0	
Subtotal	0	0		0	0	
Non-Commercial Noise Violations	2020	2019	Change	2020	2019	Change
All GA, Charter & Other	12	11	9.1%	54	91	-40.7%
TOTAL	13	26	-50.0%	73	163	-55.2%
Monetary Fines	2020	2019		2020	2019	
Airport Surcharges	\$0	\$4,500		\$6,800	\$25,000	
Consent Decree	\$0	\$60,000		\$78,000	\$288,000	
TOTAL	\$0	\$64,500		\$84,800	\$313,000	

AIRPORT OPERATIONS						
LGB Current Month & Calendar Year-To-Date Statistics						
July 2020						
July				Calendar Year-To-Date		
Airport Operations (FAA)	2020	2019	Change	2020	2019	Change
Air Carrier + Commuter Carriers	1,150	2,933	-60.8%	11,372	18,805	-39.5%
Air Taxi + General Aviation	24,763	27,068	-8.5%	145,042	164,061	-11.6%
Military Operations	127	73	74.0%	748	740	1.1%
Total Aircraft Operations	26,040	30,074	-13.4%	157,162	183,606	-14.4%

Notes:

0.05% (13 of 25,913) of the Airport's total aircraft operations (Commercial & GA) resulted in an aircraft noise violation.

0.09% (1 of 1,150) of the Airport's Commercial operations (Commercial & Commuter) resulted in an aircraft noise violation.

AIRCRAFT NOISE VIOLATORS

July 2020

OWNERNAME	DATE	TIME	A/D	RWY	FLIGHT #	A/C TYPE	ORIG/DEST	SEL	LIMIT	STATUS
Mann Aviation Inc.	7/2/2020	4:50:14	D	30		C172		84.1	79.0	VIO
Private	7/5/2020	23:49:26	A	30		P32R		84.5	79.0	VIO
Private	7/7/2020	19:14:34	T	26R		C172		n/a	n/a	VIO
Private	7/7/2020	19:46:16	T	26R		C152		n/a	n/a	VIO
So. Cal Flyers LLC	7/11/2020	5:42:55	D	30		C510		83.7	79.0	VIO
JetBlue Airways	7/12/2020	23:25:20	A	30	JBU531	A320	SLC	91.8	79.0	VIO + Alt Enf
Private	7/16/2020	14:44:12	D	26R		BE60		95.1	92.0	VIO
Robin Motorsports And Aviation LLC	7/20/2020	5:53:23	D	30		SR22		83.0	79.0	VIO
Van Horn Aviation LLC	7/21/2020	15:21:20	D	26L		T-6G		101.2	95.0	VIO
ToView Aviation LLC	7/22/2020	19:22:46	T	26R		LTSP		n/a	n/a	VIO
Private	7/22/2020	19:44:12	T	26R		C172		n/a	n/a	VIO
JPH LLC	7/27/2020	0:16:51	A	30		C500		81.8	79.0	VIO
Private	7/29/2020	20:24:49	D	26R		P32T		94.2	92.0	VIO

DEFINITIONS:

A/C Type — Aircraft Type

A — Arrival

ALT ENF — Alternative Enforcement

D — Departure

RWY — Runway

SEL — SENEL — Single Event Noise Exposure Level (dBA)

VIO—Violation

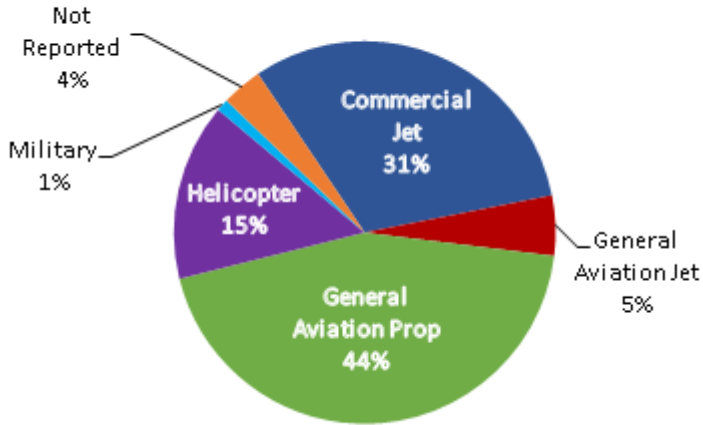
T—Touch and Go

VIO—Violation

LGB AIRCRAFT NOISE COMPLAINTS

July 2020

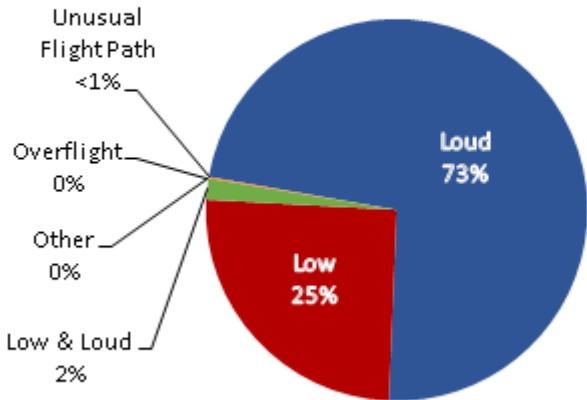
Complaints by Aircraft Types



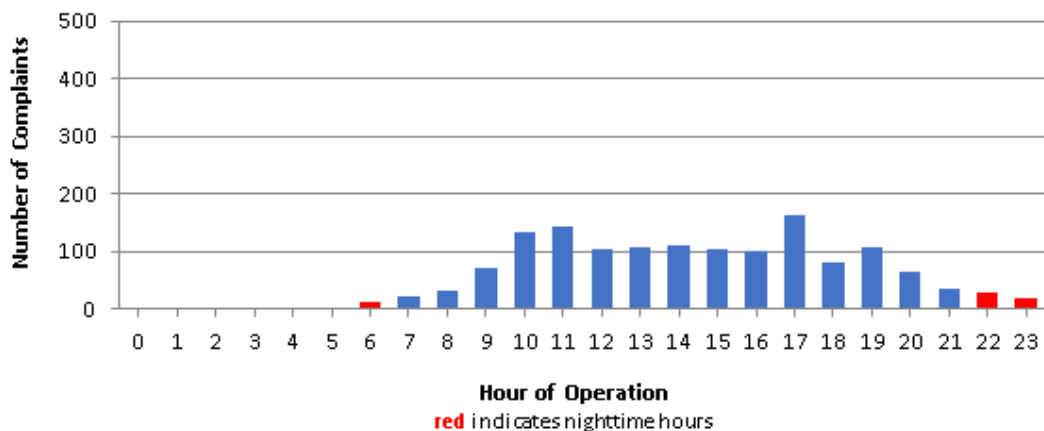
Complaints by Zip Code

Zip Code	Complaints	Units
90242	2	1
90278	234	1
90712	43	1
90740	3	1
90755	1	1
90805	15	3
90807	122	24
90808	4	2
90815	6	5
91364	1	1
92612	220	1
92615	1	1
92626	244	1
92627	10	2
92647	351	2
92648	137	10
92649	26	4
92651	2	1
92656	1	1
92660	4	1
92661	3	1
92869	16	1
Not Reported	10	8
Grand Total	1,456	74

Complaints by Concern



Complaints by Time of Operation





long beach airport



Long Beach Airport

4100 E. Donald Douglas Drive, Long Beach, CA 90808

www.lgb.org • lgbapt@longbeach.gov

Administration • (562) 570-2619