

## Airport Advisory Commission

**Alvaro Castillo**  
Chair

**Wayne Chaney Sr.**  
Vice Chair

**Jeffrey Anderson**

**Katie Larson**

**Rita Nayak**

**Miles Nevin**

**Geetanjali Reuben**

**Jeff Rowe**

**Mary Sophia**

## Airport Management

**Cynthia Guidry**  
Director

**Juan López-Ríos**  
Deputy Airport Director

**Ken Mason**  
Executive Assistant

**Claudia Lewis**  
Manager of Administration  
& Finance

**Ron Reeves**  
Airport Operations & Facilities  
Manager

**Ambi Thurai**  
Engineering Officer

**Dale Worsham**  
Administrative Officer

**Karl Zittel**  
Airsides Operations Officer

**Matthew Brookes**  
Airport Properties Officer

**Scott Garrett**  
Facilities Management Officer

**Mony Chhey**  
Financial Services Officer

**Scott Korobkin**  
Superintendent of Safety and  
Security

**Kate Kuykendall**  
Public Affairs Officer

**Ryan McMullan**  
Noise & Environmental Affairs  
Officer



# Long Beach Airport Monthly Noise Report June 2020



<b>AIRPORT NOISE VIOLATIONS</b>						
<b>LGB Current Month &amp; Calendar Year-To-Date Statistics</b>						
<b>June 2020</b>						
<b>June</b>				<b>Calendar Year-To-Date</b>		
<b>Air Carrier Noise Violations</b>	<b>2020</b>	<b>2019</b>	<b>Change</b>	<b>2020</b>	<b>2019</b>	<b>Change</b>
American/Mesa Airlines	0	3	-100.0%	0	7	-100.0%
Delta/SkyWest/Compass	0	1	-100.0%	1	3	-66.7%
FedEx	0	0		0	0	
Hawaiian Airlines	0	0		2	2	0.0%
JetBlue Airways	1	8	-87.5%	15	44	-65.9%
Southwest Airlines	0	0		0	0	
UPS	0	0		0	1	-100.0%
<b>Subtotal</b>	<b>1</b>	<b>12</b>	<b>-91.7%</b>	<b>18</b>	<b>57</b>	<b>-68.4%</b>
<b>Commuter Noise Violations</b>	<b>2020</b>	<b>2019</b>	<b>Change</b>	<b>2020</b>	<b>2019</b>	<b>Change</b>
American/SkyWest Airlines	0	0		0	0	
Delta/SkyWest/Compass	0	0		0	0	
<b>Subtotal</b>	<b>0</b>	<b>0</b>		<b>0</b>	<b>0</b>	
<b>Non-Commercial Noise Violations</b>	<b>2020</b>	<b>2019</b>	<b>Change</b>	<b>2020</b>	<b>2019</b>	<b>Change</b>
All GA, Charter & Other	5	19	-73.7%	42	80	-47.5%
<b>TOTAL</b>	<b>6</b>	<b>31</b>	<b>-80.6%</b>	<b>60</b>	<b>137</b>	<b>-56.2%</b>
<b>Monetary Fines</b>	<b>2020</b>	<b>2019</b>		<b>2020</b>	<b>2019</b>	
Airport Surcharges	\$300	\$4,200		\$6,800	\$20,500	
Consent Decree	\$6,000	\$48,000		\$78,000	\$228,000	
<b>TOTAL</b>	<b>\$6,300</b>	<b>\$52,200</b>		<b>\$84,800</b>	<b>\$248,500</b>	

<b>AIRPORT OPERATIONS</b>						
<b>LGB Current Month &amp; Calendar Year-To-Date Statistics</b>						
<b>June 2020</b>						
<b>June</b>				<b>Calendar Year-To-Date</b>		
<b>Airport Operations (FAA)</b>	<b>2020</b>	<b>2019</b>	<b>Change</b>	<b>2020</b>	<b>2019</b>	<b>Change</b>
Air Carrier + Commuter Carriers	830	2,824	-70.6%	10,222	15,872	-35.6%
Air Taxi + General Aviation	22,031	24,593	-10.4%	120,279	136,993	-12.2%
Military Operations	99	92	7.6%	621	667	-6.9%
<b>Total Aircraft Operations</b>	<b>22,960</b>	<b>27,509</b>	<b>-16.5%</b>	<b>131,122</b>	<b>153,532</b>	<b>-14.6%</b>

Notes:

0.03% (10 of 22,861) of the Airport's total aircraft operations (Commercial & GA) resulted in an aircraft noise violation.

0.1% (1 of 830) of the Airport's Commercial operations (Commercial & Commuter) resulted in an aircraft noise violation.

## AIRCRAFT NOISE VIOLATORS

### June 2020

OWNERNAME	DATE	TIME	A/D	RWY	FLIGHT #	A/C TYPE	ORIG/DEST	SEL	LIMIT	STATUS
Sierra Systems	6/4/2020	10:18:39	D	26R		C337		99.3	92.0	VIO
JetBlue Airways	6/11/2020	23:59:09	A	30	JBU231	A320	SLC	92.0	79.0	VIO + Alt Enf
Private	6/18/2020	19:37:37	M	30		PA30		N/A	N/A	VIO
Horowitz Transportation LLC	6/21/2020	23:32:14	A	30		B350		83.7	79.0	VIO
Private	6/23/2020	20:26:54	M	30		C182		N/A	N/A	VIO
Private	6/29/2020	20:16:22	T	26R		P28A		N/A	N/A	VIO

**DEFINITIONS:**

**A/C Type** — Aircraft Type

**RWY** — Runway

**A** — Arrival

**SEL** — SENEL — Single Event Noise Exposure Level (dBA)

**ALT ENF** — Alternative Enforcement

**VIO**—Violation

**D** — Departure

**T**—Touch and Go

**M**—Missed Approach

**VIO**—Violation

## AIR CARRIER NOISE BUDGET PERFORMANCE

### July 2019 - June 2020

RMT #	NOISE BUDGET	ACTUAL	PERCENT BUDGET USED
9	70.7	36.8	52.1%
10	84.6	51.4	60.8%

## TOTAL NOISE BUDGET PERFORMANCE

### July 2019 - June 2020

RMT #	NOISE BUDGET	ACTUAL	PERCENT BUDGET USED
9	102.7	44.9	43.7%
10	120.9	62.3	51.5%

Source: Long Beach Airport Staff Calculations

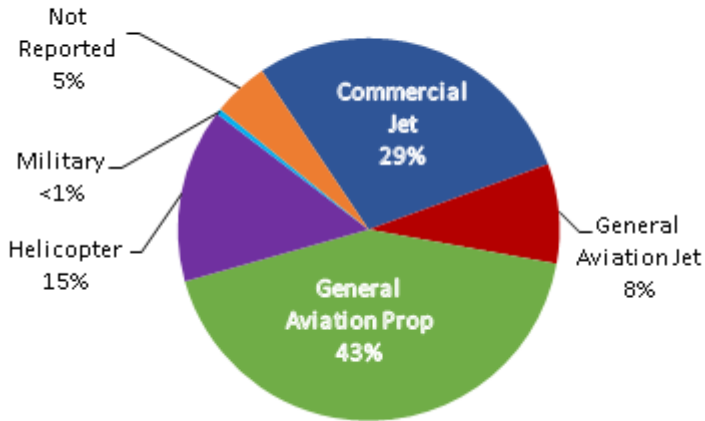
**DEFINITIONS:**

**RMT** — Remote Monitoring Terminal

# LGB AIRCRAFT NOISE COMPLAINTS

June 2020

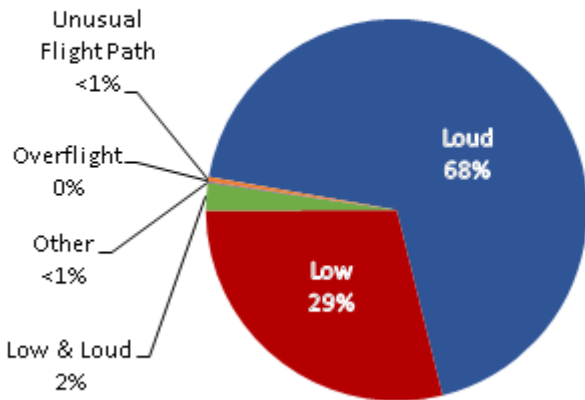
## Complaints by Aircraft Types



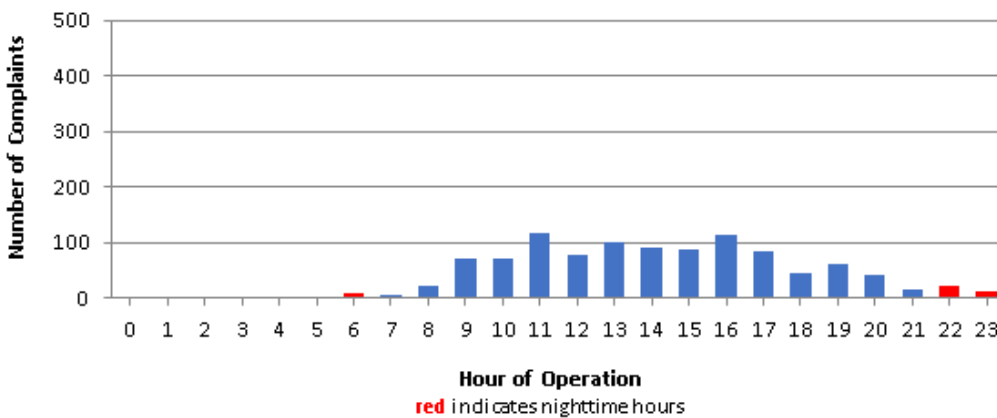
## Complaints by Zip Code

Zip Code	Complaints	Units
90242	9	1
90254	9	1
90278	71	1
90712	16	1
90803	1	1
90805	10	2
90807	40	21
90808	5	4
90815	4	3
91364	1	1
92612	254	1
92615	4	1
92626	229	3
92627	3	1
92647	221	3
92648	132	10
92649	6	2
92651	2	2
92660	1	1
92661	2	1
92662	2	2
92677	1	1
92807	3	1
92869	24	2
Not Reported	9	6
<b>Grand Total</b>	<b>1,059</b>	<b>73</b>

## Complaints by Concern



## Complaints by Time of Operation





# long beach airport



## Long Beach Airport

4100 E. Donald Douglas Drive, Long Beach, CA 90808

[www.lgb.org](http://www.lgb.org) • [lgbapt@longbeach.gov](mailto:lgbapt@longbeach.gov)

Administration • (562) 570-2619