

Airport Advisory Commission

Jeffrey Anderson
Chair

Wayne Chaney Sr.
Vice Chair

Alvaro Castillo

Katie Larson

Rita Nayak

Miles Nevin

Geetanjali Reuben

Jeff Rowe

Mary Sophia

Airport Management

Cynthia Guidry
Director

Juan López-Ríos
Deputy Airport Director

Ken Mason
Executive Assistant

Claudia Lewis
Manager of Administration
& Finance

Ron Reeves
Airport Operations & Facilities
Manager

Ambi Thurai
Engineering Officer

Dale Worsham
Administrative Officer

Karl Zittel
Airside Operations Officer

Matthew Brookes
Airport Properties Officer

Scott Garrett
Facilities Management Officer

Mony Chhey
Financial Services Officer

Scott Korobkin
Superintendent of Safety and
Security

Kate Kuykendall
Public Affairs Officer

Ryan McMullan
Noise & Environmental Affairs
Officer



Long Beach Airport Monthly Noise Report April 2020

COMMERCIAL AIRCRAFT LATE NIGHT ACTIVITY
LGB Current Month & Calendar Year-To-Date Statistics (10 PM- 7AM)
April 2020

April				Calendar Year-To-Date		
10PM - 11PM Activity	2020	2019	Change	2020	2019	Change
Air Carrier & Commuter Operations	610	2,706	-77.5%	8,792	10,185	-13.7%
American/Mesa/SkyWest Airlines	0	0		0	2	-100.0%
Delta/SkyWest/Compass Airlines	0	1	-100.0%	7	12	-41.7%
FedEx	0	0		0	0	
Hawaiian Airlines	0	0		1	3	-66.7%
JetBlue Airways	0	10	-100.0%	21	54	-61.1%
Southwest Airlines	0	0		0	3	-100.0%
UPS	0	0		0	0	
Subtotal 10PM-11PM	0	11	-100.0%	29	74	-60.8%
11PM- 7AM Activity	2020	2019	Change	2020	2019	Change
American/Mesa/SkyWest Airlines	0	0		0	0	
Delta/SkyWest/Compass Airlines	0	0		0	3	-100.0%
FedEx	0	0		0	0	
Hawaiian Airlines	0	0		2	1	100.0%
JetBlue Airways	0	6	-100.0%	16	28	-42.9%
Southwest Airlines	0	0		0	0	
UPS	0	1	-100.0%	0	2	-100.0%
Subtotal 11PM-7AM	0	7	-100.0%	18	34	-47.1%
TOTAL	0	18	-100.0%	47	108	-56.5%

Notes:

0.0% (0 of 610) of total commercial operations occurred between 10pm - 7am.

0.0 flights - Nightly average for all late night (10:00 PM—7:00 AM) commercial flights, includes unanticipated delays.

0.0 flights - Nightly average for commercial flights after 11 PM.

AIRPORT NOISE VIOLATIONS						
LGB Current Month & Calendar Year-To-Date Statistics						
April 2020						
April				Calendar Year-To-Date		
Air Carrier Noise Violations	2020	2019	Change	2020	2019	Change
American/Mesa Airlines	0	0		0	1	-100.0%
Delta/SkyWest/Compass	0	0		1	2	-50.0%
FedEx	0	0		0	0	
Hawaiian Airlines	0	0		2	1	100.0%
JetBlue Airways	0	8	-100.0%	14	32	-56.3%
Southwest Airlines	0	0		0	0	
UPS	0	0		0	1	-100.0%
Subtotal	0	8	-100.0%	17	37	-54.1%
Commuter Noise Violations	2020	2019	Change	2020	2019	Change
American/SkyWest Airlines	0	0		0	0	
Delta/SkyWest/Compass	0	0		0	0	
Subtotal	0	0		0	0	
Non-Commercial Noise Violations	2020	2019	Change	2020	2019	Change
All GA, Charter & Other	7	16	-56.3%	36	47	-23.4%
TOTAL	7	24	-70.8%	53	84	-36.9%
Monetary Fines	2020	2019		2020	2019	
Airport Surcharges	\$300	\$3,100		\$6,500	\$13,600	
Consent Decree	\$0	\$36,000		\$72,000	\$156,000	
TOTAL	\$300	\$39,100		\$78,500	\$169,600	

AIRPORT OPERATIONS						
LGB Current Month & Calendar Year-To-Date Statistics						
April 2020						
April				Calendar Year-To-Date		
Airport Operations (FAA)	2020	2019	Change	2020	2019	Change
Air Carrier + Commuter Carriers	610	2,706	-77.5%	8,792	10,185	-13.7%
Air Taxi + General Aviation	11,965	22,810	-47.5%	78,440	89,038	-11.9%
Military Operations	119	139	-14.4%	411	492	-16.5%
Total Aircraft Operations	12,694	25,655	-50.5%	87,643	99,715	-12.1%

Notes:

0.06% (7 of 12,575) of the Airport's total aircraft operations (Commercial & GA) resulted in an aircraft noise violation.

0.0% (0 of 610) of the Airport's Commercial operations (Commercial & Commuter) resulted in an aircraft noise violation.

AIRCRAFT NOISE VIOLATORS

April 2020

OWNERNAME	DATE	TIME	A/D	RWY	FLIGHT #	A/C TYPE	ORIG/DEST	SEL	LIMIT	STATUS
Bank of Utah Trustee	4/4/2020	0:36:02	A	30		GLF4		89.4	79.0	VIO
5 Star Jet LLC	4/4/2020	0:53:30	A	30		GLF4		89.9	79.0	VIO
Falcon Landing LLC	4/6/2020	0:34:56	A	30		G650		86.8	79.0	VIO
Berry Aviation, Inc.	4/6/2020	5:49:31	A	30		E120		90.7	79.0	VIO
Valley Logistics LLC	4/8/2020	4:40:31	D	30		E55P		86.4	79.0	VIO
Elevate Jet LLC	4/21/2020	2:02:44	A	30		E135		87.9	79.0	VIO
5 Star Jet LLC	4/24/2020	23:16:34	A	30		GLF4		89.1	79.0	VIO

DEFINITIONS:

A/C Type — Aircraft Type

RWY — Runway

A/D— Arrival / Departure

SEL — SENEL — Single Event Noise Exposure Level (dBA)

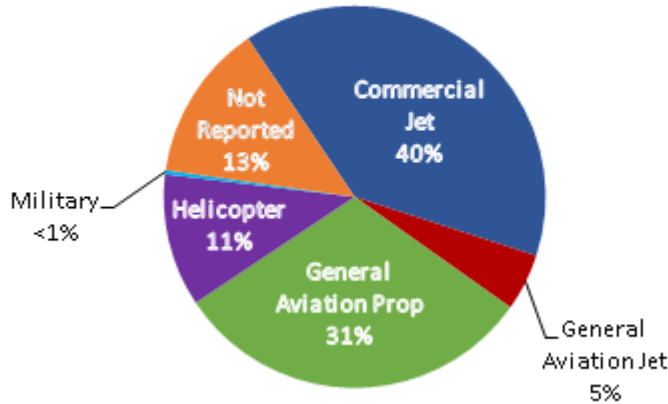
ALT ENF — Alternative Enforcement

VIO—Violation

LGB AIRCRAFT NOISE COMPLAINTS

April 2020

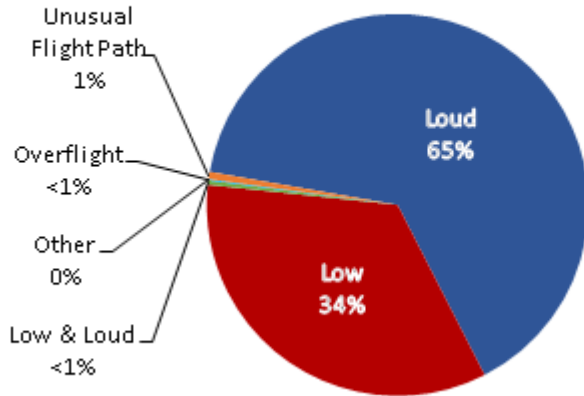
Complaints by Aircraft Types



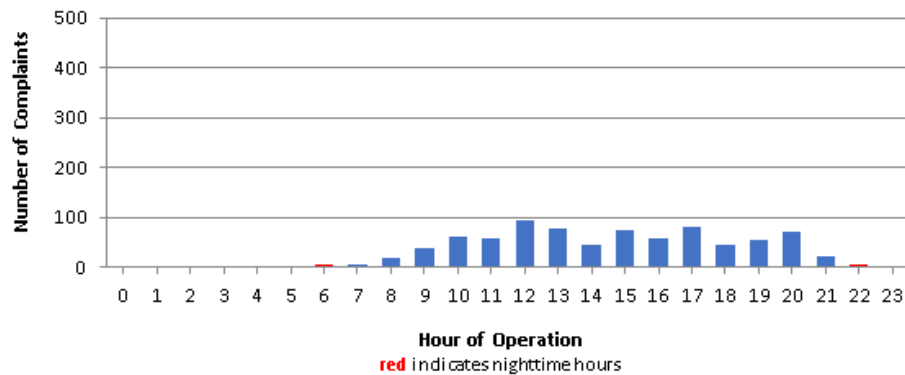
Complaints by Zip Code

Zip Code	Complaints	Units
90242	4	1
90278	10	1
90713	1	1
90717	1	1
90805	20	1
90807	17	7
90808	3	2
92612	264	1
92615	2	1
92626	150	2
92629	3	1
92647	227	4
92648	108	10
92649	9	1
92656	1	1
92661	1	1
92869	4	1
Not Reported	2	2
Grand Total	827	39

Complaints by Concern



Complaints by Time of Operation





long beach airport



Long Beach Airport

4100 E. Donald Douglas Drive, Long Beach, CA 90808

www.lgb.org • lgbapt@longbeach.gov

Administration • (562) 570-2619