

Airport Advisory Commission

Alvaro Castillo
Chair

Wayne Chaney Sr.
Vice Chair

Jeffrey Anderson

Robert L. Duarte Jr.

Katie Larson

Rita Nayak

Miles Nevin

Geetanjali Reuben



long beach
airport



Airport Management

Cynthia Guidry
Director

Juan López-Ríos
Deputy Airport Director

Ken Mason
Executive Assistant

Claudia Lewis
Manager of Administration
& Finance

Ron Reeves
Airport Operations & Facilities
Manager

Ambi Thurai
Engineering Officer

Dale Worsham
Administrative Officer

Karl Zittel
Airside Operations Officer

Matthew Brookes
Airport Properties Officer

Scott Garrett
Facilities Management Officer

Mony Chhey
Financial Services Officer

Scott Korobkin
Superintendent of Safety and
Security

Kate Kuykendall
Public Affairs Officer

Ryan McMullan
Noise & Environmental Affairs
Officer



Long Beach Airport Monthly Noise Report December 2020

COMMERCIAL AIRCRAFT LATE NIGHT ACTIVITY
LGB Current Month & Calendar Year-To-Date Statistics (10 PM- 7AM)
December 2020

December				Calendar Year-To-Date		
10PM - 11PM Activity	2020	2019	Change	2020	2019	Change
Air Carrier & Commuter Operations	1,426	3,005	-52.5%	17,334	33,236	-47.8%
American/Mesa/SkyWest Airlines	0	0		0	15	-100.0%
Delta/SkyWest/Compass Airlines	0	2	-100.0%	12	28	-57.1%
FedEx	0	0		0	0	
Hawaiian Airlines	0	2	-100.0%	1	5	-80.0%
JetBlue Airways	0	23	-100.0%	22	128	-82.8%
Southwest Airlines	1	1	0.0%	1	10	-90.0%
UPS	0	1	-100.0%	0	1	-100.0%
Subtotal 10PM-11PM	1	29	-96.6%	36	187	-80.7%
11PM- 7AM Activity	2020	2019	Change	2020	2019	Change
American/Mesa/SkyWest Airlines	0	0		0	10	-100.0%
Delta/SkyWest/Compass Airlines	0	0		0	4	-100.0%
FedEx	0	0		0	1	-100.0%
Hawaiian Airlines	0	1	-100.0%	2	3	-33.3%
JetBlue Airways	0	16	-100.0%	18	88	-79.5%
Southwest Airlines	0	0		0	0	
UPS	0	0		0	3	-100.0%
Subtotal 11PM-7AM	0	17	-100.0%	20	109	-81.7%
TOTAL	1	46	-97.8%	56	296	-81.1%

Notes:

0.07% (1 of 1,426) of total commercial operations occurred between 10pm - 7am.
0.03 flights - Nightly average for all late night (10:00 PM—7:00 AM) commercial flights, includes unanticipated delays.
0.0 flights - Nightly average for commercial flights after 11 PM.

AIRPORT NOISE VIOLATIONS						
LGB Current Month & Calendar Year-To-Date Statistics						
December 2020						
	December			Calendar Year-To-Date		
Air Carrier Noise Violations	2020	2019	Change	2020	2019	Change
American/Mesa Airlines	0	0		0	12	-100.0%
Delta/SkyWest/Compass	0	0		1	4	-75.0%
FedEx	0	0		0	1	-100.0%
Hawaiian Airlines	0	0		2	2	0.0%
JetBlue Airways	0	20	-100.0%	16	96	-83.3%
Southwest Airlines	0	0		0	1	-100.0%
UPS	0	0		0	1	-100.0%
Subtotal	0	20	-100.0%	19	117	-83.8%
Commuter Noise Violations	2020	2019	Change	2020	2019	Change
American/SkyWest Airlines	0	0		0	0	
Delta/SkyWest/Compass	0	0		0	0	
Subtotal	0	0		0	0	
Non-Commercial Noise Violations	2020	2019	Change	2020	2019	Change
All GA, Charter & Other	4	14	-71.4%	109	150	-27.3%
TOTAL	4	34	-88.2%	128	267	-52.1%
Monetary Fines	2020	2019		2020	2019	
Airport Surcharges	\$0	\$6,100		\$8,400	\$40,100	
Consent Decree	\$0	\$96,000		\$78,000	\$492,000	
TOTAL	\$0	\$102,100		\$86,400	\$532,100	

AIRPORT OPERATIONS						
LGB Current Month & Calendar Year-To-Date Statistics						
December 2020						
	December			Calendar Year-To-Date		
Airport Operations (FAA)	2020	2019	Change	2020	2019	Change
Air Carrier + Commuter Carriers	1,426	3,005	-52.5%	17,334	33,236	-47.8%
Air Taxi + General Aviation	22,465	21,113	6.4%	268,919	287,549	-6.5%
Military Operations	86	84	2.4%	1,225	1,199	2.2%
Total Aircraft Operations	23,977	24,202	-0.9%	287,478	321,984	-10.7%

Notes:

0.02% (11 of 23,891) of the Airport's total aircraft operations (Commercial & GA) resulted in an aircraft noise violation.
0.0% (0 of 1,426) of the Airport's Commercial operations (Commercial & Commuter) resulted in an aircraft noise violation.

AIRCRAFT NOISE VIOLATORS

December 2020

OWNERNAME	DATE	TIME	A/D	RWY	FLIGHT #	A/C TYPE	ORIG/DEST	SEL	LIMIT	STATUS
2514 LLC	12/9/2020	0:46:51	A	30		F2TH		87.5	79.0	VIO
Bank of Utah Trustee	12/12/2020	0:12:18	D	30		G650		88.8	79.0	VIO
KKA Enterprises LLC	12/22/2020	5:19:16	A	30		GALX		88.6	79.0	VIO
O C Flight Lessons LLC	12/26/2020	15:23:09	T	26L		C172		n/a	n/a	VIO

DEFINITIONS:

A/C Type — Aircraft Type

A — Arrival

D — Departure

RWY — Runway

SEL — SENEL — Single Event Noise Exposure Level (dBA)

T—Touch and Go

VIO—Violation

AIR CARRIER NOISE BUDGET PERFORMANCE

January 2020 - December 2020

RMT #	NOISE BUDGET	ACTUAL	PERCENT BUDGET USED
9	70.7	17.5	24.7%
10	84.6	27.2	32.1%

Source: Long Beach Airport Staff Calculations

DEFINITIONS:

RMT — Remote Monitoring Terminal

TOTAL NOISE BUDGET PERFORMANCE

January 2020 - December 2020

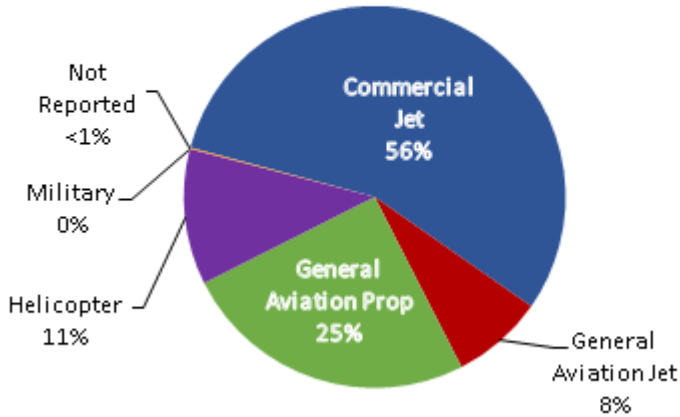
RMT #	NOISE BUDGET	ACTUAL	PERCENT BUDGET USED
9	102.7	23.6	23.0%
10	120.9	36.3	30.0%

Source: Long Beach Airport Staff Calculations

LGB AIRCRAFT NOISE COMPLAINTS

December 2020

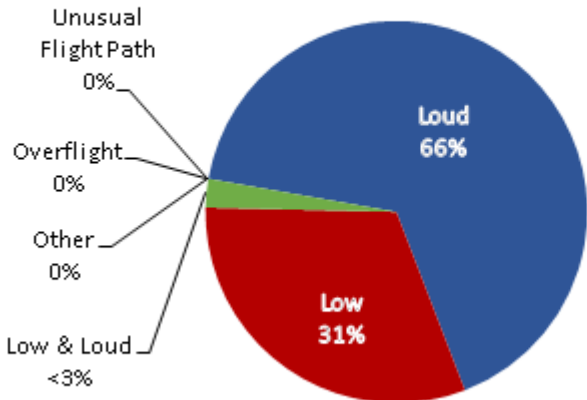
Complaints by Aircraft Types



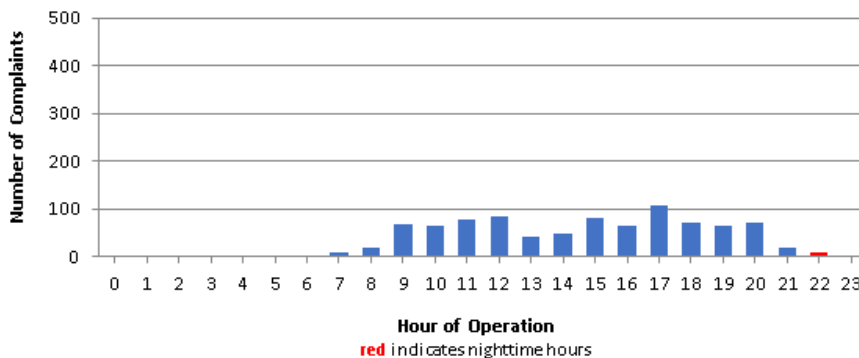
Complaints by Zip Code

Zip Code	Complaints	Units
90242	13	1
90278	31	1
90746	16	1
90805	9	1
90807	20	6
90808	2	2
90815	3	1
91364	3	1
92604	1	1
92612	38	1
92615	3	1
92626	255	2
92627	11	1
92646	2	1
92647	430	2
92648	38	3
92649	20	2
92651	2	1
92653	3	1
92656	7	1
92660	2	1
92661	3	1
92869	1	1
Grand Total	913	34

Complaints by Concern



Complaints by Time of Operation





long beach airport



Long Beach Airport

4100 E. Donald Douglas Drive, Long Beach, CA 90808

www.lgb.org • lgbapt@longbeach.gov

Administration • (562) 570-2619