

## Airport Advisory Commission

**Miles Nevin**  
Chair

**Alvaro Castillo**  
Vice Chair

**Jeffrey Anderson**

**Christine Bos**

**Wayne Chaney Sr.**

**Robert L. Duarte Jr.**

**Katie Larson**

**Rita Nayak**

**Geetanjali Reuben**

## Airport Management

**Cynthia Guidry**  
Director

**Juan López-Ríos**  
Deputy Airport Director

**Ken Mason**  
Executive Assistant

**Claudia Lewis**  
Manager of Administration  
& Finance

**Ron Reeves**  
Airport Operations & Facilities  
Manager

**Ambi Thurai**  
Engineering Officer

**Dale Worsham**  
Administrative Officer

**Karl Zittel**  
Airsides Operations Officer

**Matthew Brookes**  
Airport Properties Officer

**Scott Garrett**  
Facilities Management Officer

**Mony Chhey**  
Financial Services Officer

**Scott Korobkin**  
Superintendent of Safety and  
Security

**Kate Kuykendall**  
Public Affairs Officer

**Ryan McMullan**  
Noise & Environmental Affairs  
Officer



# Long Beach Airport Monthly Noise Report July 2021



<b>AIRPORT NOISE VIOLATIONS</b>						
<b>LGB Current Month &amp; Calendar Year-To-Date Statistics</b>						
<b>July 2021</b>						
<b>July</b>				<b>Calendar Year-To-Date</b>		
<b>Air Carrier Noise Violations</b>	<b>2021</b>	<b>2020</b>	<b>Change</b>	<b>2021</b>	<b>2020</b>	<b>Change</b>
American/Mesa/SkyWest/Envoy	0	0		0	0	
Delta/SkyWest Airlines	0	0		0	1	-100.0%
FedEx	0	0		0	0	
Hawaiian Airlines	0	0		0	2	-100.0%
JetBlue Airways	0	1	-100.0%	0	16	-100.0%
Southwest Airlines	1	0	100.0%	1	0	100.0%
UPS	0	0		1	0	100.0%
<b>Subtotal</b>	<b>1</b>	<b>1</b>	<b>0.0%</b>	<b>2</b>	<b>19</b>	<b>-89.5%</b>
<b>Commuter Noise Violations</b>	<b>2021</b>	<b>2020</b>	<b>Change</b>	<b>2021</b>	<b>2020</b>	<b>Change</b>
American/Mesa/SkyWest/Envoy	0	0		0	0	
Delta/SkyWest Airlines	0	0		0	0	
<b>Subtotal</b>	<b>0</b>	<b>0</b>		<b>0</b>	<b>0</b>	
<b>Non-Commercial Noise Violations</b>	<b>2021</b>	<b>2020</b>	<b>Change</b>	<b>2021</b>	<b>2020</b>	<b>Change</b>
All GA, Charter & Other	13	12	8.3%	89	54	64.8%
<b>TOTAL</b>	<b>14</b>	<b>13</b>	<b>7.7%</b>	<b>91</b>	<b>73</b>	<b>24.7%</b>
<b>Monetary Fines</b>	<b>2021</b>	<b>2020</b>		<b>2021</b>	<b>2020</b>	
Airport Surcharges	\$200	\$0		\$2,300	\$6,800	
Consent Decree	\$0	\$0		\$0	\$78,000	
<b>TOTAL</b>	<b>\$200</b>	<b>\$0</b>		<b>\$2,300</b>	<b>\$84,800</b>	

<b>AIRPORT OPERATIONS</b>						
<b>LGB Current Month &amp; Calendar Year-To-Date Statistics</b>						
<b>July 2021</b>						
<b>July</b>				<b>Calendar Year-To-Date</b>		
<b>Airport Operations (FAA)</b>	<b>2021</b>	<b>2020</b>	<b>Change</b>	<b>2021</b>	<b>2020</b>	<b>Change</b>
Air Carrier + Commuter Carriers	2,174	1,150	89.0%	12,941	11,372	13.8%
Air Taxi + General Aviation	29,874	24,763	20.6%	187,631	145,042	29.4%
Military Operations	122	127	-3.9%	716	748	-4.3%
<b>Total Aircraft Operations</b>	<b>32,170</b>	<b>26,040</b>	<b>23.5%</b>	<b>201,288</b>	<b>157,162</b>	<b>28.1%</b>

Notes:

0.04% (14 of 32,170) of the Airport's total aircraft operations (Commercial & GA) resulted in an aircraft noise violation.

0.05% (1 of 2,174) of the Airport's Commercial operations (Commercial & Commuter) resulted in an aircraft noise violation.

# AIRCRAFT NOISE VIOLATORS

## July 2021

OWNERNAME	DATE	TIME	A/D	RWY	FLIGHT #	A/C TYPE	ORIG/DEST	SEL	LIMIT	STATUS
NWC Leasing LLC	7/1/2021	14:59:41	D	26R		PA30		94.3	92.0	VIO
Private	7/5/2021	23:32:59	A	30		PA44		81.8	79.0	VIO
Sierra American Corp.	7/7/2021	22:40:59	D	30		FA20		95.7	90.0	VIO
Private	7/10/2021	16:59:57	D	26R		BE35		95.6	92.0	VIO
Pacific Connection Inc.	7/13/2021	23:43:36	A	30		FA7X		88.6	79.0	VIO
TVPX ARS Inc. Trustee	7/16/2021	22:23:29	D	30		FA7X		92.8	90.0	VIO
Redleaf Management Co. LLC	7/19/2021	0:38:40	A	30		F900		90.2	79.0	VIO
Private	7/20/2021	23:11:54	D	30		BE58		83.2	79.0	VIO
Private	7/22/2021	23:46:52	A	30		PA44		82.9	79.0	VIO
Private	7/22/2021	23:46:52	A	30		PA44		82.9	79.0	VIO
Southwest Airlines	7/25/2021	23:47:21	A	30	SWA5037	B737	LAS	92.5	79.0	VIO
Private	7/26/2021	5:52:37	A	30		C25B		85.9	79.0	VIO
West Coast Charters LLC	7/29/2021	0:43:57	A	30		B350		86.6	79.0	VIO
Bank of Utah Trustee	7/30/2021	23:24:28	A	30		CRJ7		89.7	79.0	VIO

**DEFINITIONS:**

**A/C Type** — Aircraft Type

**A/D** — Arrival/Departure

**RWY** — Runway

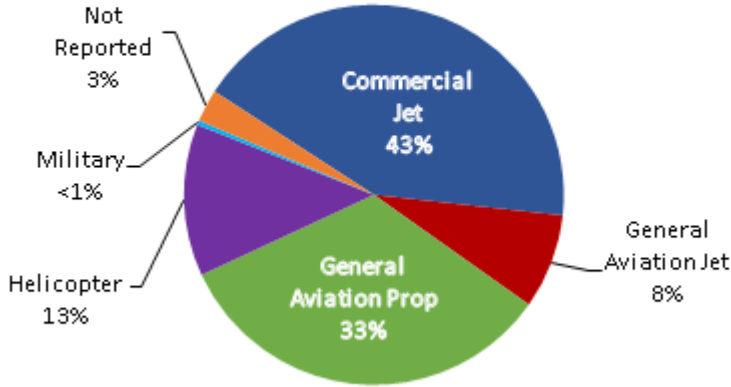
**SEL** — SENEL — Single Event Noise Exposure Level (dBA)

**VIO** — Violation

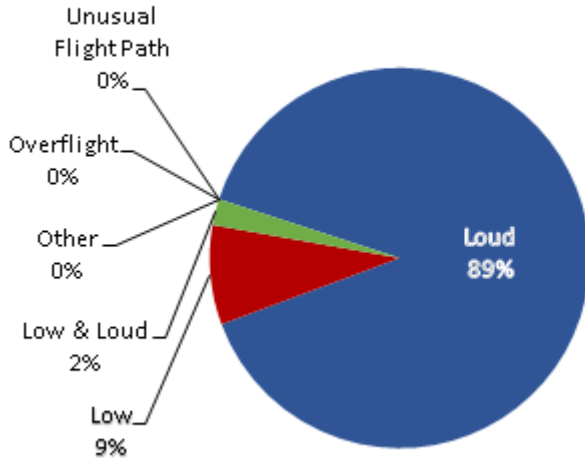
# LGB AIRCRAFT NOISE COMPLAINTS

July 2021

## Complaints by Aircraft Types



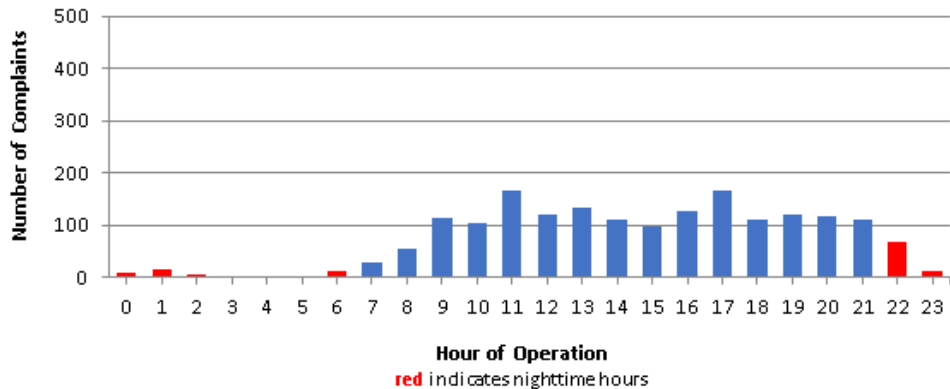
## Complaints by Concern



## Complaints by Zip Code

Zip Code	Complaints	Units
90242	3	1
90254	2	1
90277	1	1
90278	68	1
90712	1	1
90731	1	1
90745	2	1
90746	47	4
90803	1	1
90805	15	2
90807	162	26
90808	4	3
90815	2	2
91364	2	1
92612	64	1
92626	379	1
92627	3	1
92646	1	1
92647	539	2
92648	220	12
92649	12	3
92651	2	2
92656	1	1
92660	2	2
92661	6	1
92676	1	1
92887	258	1
Not Reported	10	10
<b>Grand Total</b>	<b>1,809</b>	<b>85</b>

## Complaints by Time of Operation





# long beach airport



## Long Beach Airport

4100 E. Donald Douglas Drive, Long Beach, CA 90808

[www.lgb.org](http://www.lgb.org) • [lgbapt@longbeach.gov](mailto:lgbapt@longbeach.gov)

Administration • (562) 570-2619