

## Airport Advisory Commission

**Miles Nevin**  
Chair

**Katie Larson**  
Vice Chair

**Jeffrey Anderson**

**Christine Bos**

**Wayne Chaney Sr.**

**Robert L. Duarte Jr.**

**Mireya LaFarga**

**Geetanjali Reuben**

**Dede Rossi**

## Airport Management

**Cynthia Guidry**  
Director

**Juan López-Ríos**  
Deputy Airport Director

**Ken Mason**  
Executive Assistant

**Claudia Lewis**  
Manager of Administration  
& Finance

**Ron Reeves**  
Airport Operations & Facilities  
Manager

**Ambi Thurai**  
Engineering Officer

**Dale Worsham**  
Administrative Officer

**Karl Zittel**  
Airside Operations Officer

**Matthew Brookes**  
Airport Properties Officer

**Scott Garrett**  
Facilities Management Officer

**Mony Chhey**  
Financial Services Officer

**Scott Korobkin**  
Superintendent of Safety and  
Security

**Kate Kuykendall**  
Public Affairs Officer

**Ryan McMullan**  
Noise & Environmental Affairs  
Officer



**long beach**  
airport



# Long Beach Airport Monthly Noise Report December 2021

**COMMERCIAL AIRCRAFT LATE NIGHT ACTIVITY**  
**LGB Current Month & Calendar Year-To-Date Statistics (10 PM- 7AM)**  
**December 2021**

December				Calendar Year-To-Date		
10PM - 11PM Activity	2021	2020	Change	2021	2020	Change
<b>Air Carrier &amp; Commuter Operations</b>	<b>2,803</b>	<b>1,426</b>	<b>96.6%</b>	<b>25,194</b>	<b>17,334</b>	<b>45.3%</b>
American/Mesa/SkyWest/Envoy	0	0		2	0	100.0%
Delta/SkyWest Airlines	7	0	100.0%	20	12	66.7%
FedEx	0	0		0	0	
Hawaiian Airlines	1	0	100.0%	4	1	300.0%
JetBlue Airways	0	0		0	22	-100.0%
Southwest Airlines	3	1	200.0%	37	1	3,600.0%
UPS	0	0		1	0	100.0%
<b>Subtotal 10PM-11PM</b>	<b>11</b>	<b>1</b>	<b>1,000.0%</b>	<b>64</b>	<b>36</b>	<b>77.8%</b>
<b>11PM- 7AM Activity</b>	<b>2021</b>	<b>2020</b>	<b>Change</b>	<b>2021</b>	<b>2020</b>	<b>Change</b>
American/Mesa/SkyWest/Envoy	0	0		3	0	300.0%
Delta/SkyWest Airlines	2	0	200.0%	4	0	400.0%
FedEx	0	0		0	0	
Hawaiian Airlines	0	0		0	2	-100.0%
JetBlue Airways	0	0		0	18	-100.0%
Southwest Airlines	0	0		2	0	100.0%
UPS	0	0		1	0	100.0%
<b>Subtotal 11PM-7AM</b>	<b>2</b>	<b>0</b>	<b>200.0%</b>	<b>10</b>	<b>20</b>	<b>-50.0%</b>
<b>TOTAL</b>	<b>13</b>	<b>1</b>	<b>1,200.0%</b>	<b>74</b>	<b>56</b>	<b>32.1%</b>

Notes:

0.4% (13 of 2,803) of total commercial operations occurred between 10pm - 7am.

0.4 flights - Nightly average for all late night (10:00 PM—7:00 AM) commercial flights, includes unanticipated delays.

0.06 flights - Nightly average for commercial flights after 11 PM.

<b>AIRPORT NOISE VIOLATIONS</b>						
<b>LGB Current Month &amp; Calendar Year-To-Date Statistics</b>						
<b>December 2021</b>						
	<b>December</b>			<b>Calendar Year-To-Date</b>		
<b>Air Carrier Noise Violations</b>	<b>2021</b>	<b>2020</b>	<b>Change</b>	<b>2021</b>	<b>2020</b>	<b>Change</b>
American/Mesa/SkyWest/Envoy	0	0		0	0	
Delta/SkyWest Airlines	2	0	100.0%	4	1	300.0%
FedEx	0	0		0	0	
Hawaiian Airlines	0	0		0	2	-100.0%
JetBlue Airways	0	0		0	16	-100.0%
Southwest Airlines	0	0		1	0	100.0%
UPS	0	0		1	0	100.0%
<b>Subtotal</b>	<b>2</b>	<b>0</b>	<b>100.0%</b>	<b>6</b>	<b>19</b>	<b>-68.4%</b>
<b>Commuter Noise Violations</b>	<b>2021</b>	<b>2020</b>	<b>Change</b>	<b>2021</b>	<b>2020</b>	<b>Change</b>
American/Mesa/SkyWest/Envoy	0	0		0	0	
Delta/SkyWest Airlines	0	0		0	0	
<b>Subtotal</b>	<b>0</b>	<b>0</b>		<b>0</b>	<b>0</b>	
<b>Non-Commercial Noise Violations</b>	<b>2021</b>	<b>2020</b>	<b>Change</b>	<b>2021</b>	<b>2020</b>	<b>Change</b>
All GA, Charter & Other	16	4	300.0%	149	109	36.7%
<b>TOTAL</b>	<b>18</b>	<b>4</b>	<b>350.0%</b>	<b>155</b>	<b>128</b>	<b>21.1%</b>
<b>Monetary Fines</b>	<b>2021</b>	<b>2020</b>		<b>2021</b>	<b>2020</b>	
Airport Surcharges	\$1,300	\$0		\$6,100	\$8,400	
Consent Decree	\$0	\$0		\$0	\$78,000	
<b>TOTAL</b>	<b>\$1,300</b>	<b>\$0</b>		<b>\$6,100</b>	<b>\$86,400</b>	

<b>AIRPORT OPERATIONS</b>						
<b>LGB Current Month &amp; Calendar Year-To-Date Statistics</b>						
<b>December 2021</b>						
	<b>December</b>			<b>Calendar Year-To-Date</b>		
<b>Airport Operations (FAA)</b>	<b>2021</b>	<b>2020</b>	<b>Change</b>	<b>2021</b>	<b>2020</b>	<b>Change</b>
Air Carrier + Commuter Carriers	2,803	1,426	96.6%	25,194	17,334	45.3%
Air Taxi + General Aviation	23,429	22,465	4.3%	323,572	268,919	20.3%
Military Operations	57	86	-33.7%	1,256	1,225	2.5%
<b>Total Aircraft Operations</b>	<b>26,289</b>	<b>23,977</b>	<b>9.6%</b>	<b>350,022</b>	<b>287,478</b>	<b>21.8%</b>

Notes:

0.07% (18 of 26,232) of the Airport's total aircraft operations (Commercial & GA) resulted in an aircraft noise violation.

0.07% (2 of 2,803) of the Airport's Commercial operations (Commercial & Commuter) resulted in an aircraft noise violation.

# AIRCRAFT NOISE VIOLATORS

## December 2021

OWNERNAME	DATE	TIME	A/D	RWY	FLIGHT #	A/C TYPE	ORIG/DEST	SEL	LIMIT	STATUS
Air Prestigio LLC	12/3/2021	0:37:43	A	30		GLF4		89.7	79.0	VIO
Ricalichan LLC	12/3/2021	23:08:35	D	30		E55P		91.7	79.0	VIO
Victor 401 LLC	12/3/2021	23:49:30	D	30		PC12		82.0	79.0	VIO
TS Aviation LLC	12/8/2021	18:54:48	D	30		GLF3		107.1	102.5	VIO
Raj Consulting LLC	12/8/2021	23:11:05	A	30		C68A		81.2	79.0	VIO
Private	12/8/2021	23:49:25	A	30		F900		87.8	79.0	VIO
Beach Aviation II LLC	12/11/2021	0:02:41	A	30		PRM1		88.7	79.0	VIO
Aero Jet Express	12/11/2021	1:22:08	A	30		LJ31		87.5	79.0	VIO
Ricalichan LLC	12/12/2021	0:20:33	D	30		E55P		87.8	79.0	VIO
Jolly Roger 1985 LLC	12/13/2021	0:45:23	A	30		C25B		86.6	79.0	VIO
Alpine Global Management LLC	12/14/2021	0:52:35	A	30		GLF4		87.6	79.0	VIO
Delta Air Lines / SkyWest Airlines	12/15/2021	0:31:22	A	30	SKW3892	E75L	SLC	91.1	79.0	VIO
Flexjet, LLC	12/19/2021	0:51:07	A	30		GLEX		86.9	79.0	VIO
JB Aviation LLC	12/20/2021	5:51:22	A	30		LJ45		88.1	79.0	VIO
Flexjet, LLC	12/21/2021	2:08:16	A	30		GLEX		86.6	79.0	VIO
Delta Air Lines / SkyWest Airlines	12/29/2021	1:34:51	A	30	SKW3892	E75L	SLC	91.1	79.0	VIO
ALC A332 1016 LLC	12/31/2021	22:24:19	A	30		A332		94.4	90.0	VIO
Private	12/31/2021	23:52:40	D	30		C172		85.0	79.0	VIO

**DEFINITIONS:**

**A/C Type** — Aircraft Type

**RWY** — Runway

**A** — Arrival

**SEL** — SENEL — Single Event Noise Exposure Level (dBA)

**D** — Departure

**VIO**—Violation

**AIR CARRIER NOISE BUDGET PERFORMANCE**  
**January 2021 - December 2021**

RMT #	NOISE BUDGET	ACTUAL	PERCENT BUDGET USED
9	70.7	27.4	38.8%
10	84.6	43.7	51.7%

Source: Long Beach Airport Staff Calculations

**DEFINITIONS:**

**RMT** — Remote Monitoring Terminal

**TOTAL NOISE BUDGET PERFORMANCE**  
**January 2021 - December 2021**

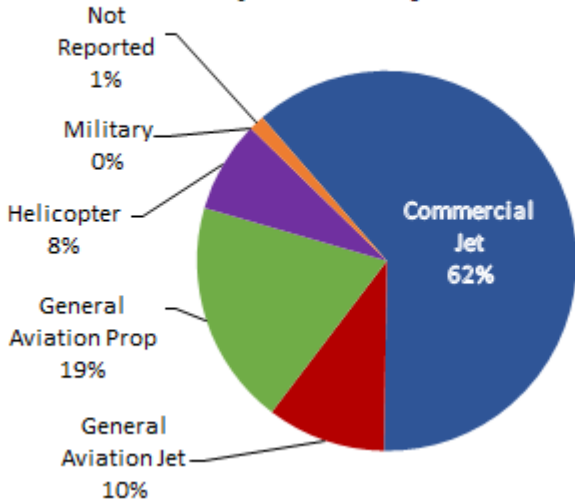
RMT #	NOISE BUDGET	ACTUAL	PERCENT BUDGET USED
9	102.7	36.6	35.7%
10	120.9	55.1	45.6%

Source: Long Beach Airport Staff Calculations

# LGB AIRCRAFT NOISE COMPLAINTS

## December 2021

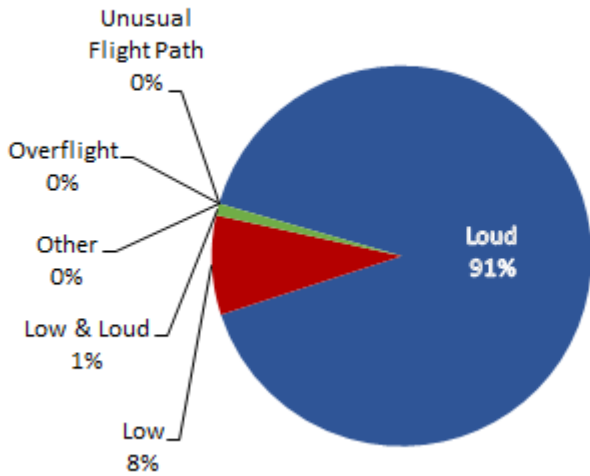
### Complaints by Aircraft Types



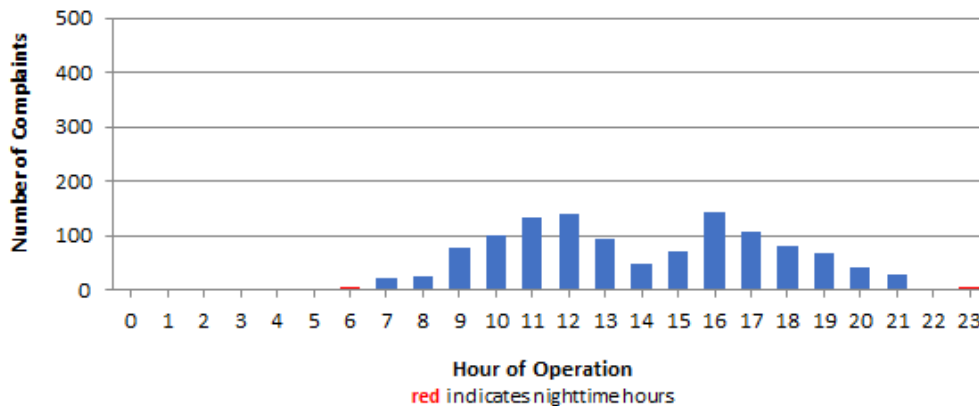
### Complaints by Zip Code

Zip Code	Complaints	Units
90242	2	1
90278	64	2
90805	5	1
90806	1	1
90807	61	19
90808	1	1
90814	1	1
90815	5	2
91364	1	1
92612	28	1
92626	524	1
92627	7	1
92629	1	1
92647	450	3
92648	51	9
92651	1	1
92656	1	1
92661	1	1
Not Reported	2	2
<b>Grand Total</b>	<b>1,207</b>	<b>50</b>

### Complaints by Concern



### Complaints by Time of Operation





# long beach airport



## Long Beach Airport

4100 E. Donald Douglas Drive, Long Beach, CA 90808

[www.lgb.org](http://www.lgb.org) • [lgbapt@longbeach.gov](mailto:lgbapt@longbeach.gov)

Administration • (562) 570-2619