

Airport Advisory Commission

Alvaro Castillo
Chair

Wayne Chaney Sr.
Vice Chair

Jeffrey Anderson

Christine Bos

Robert L. Duarte Jr.

Katie Larson

Rita Nayak

Miles Nevin

Geetanjali Reuben

Airport Management

Cynthia Guidry
Director

Juan López-Ríos
Deputy Airport Director

Ken Mason
Executive Assistant

Claudia Lewis
Manager of Administration
& Finance

Ron Reeves
Airport Operations & Facilities
Manager

Ambi Thurai
Engineering Officer

Dale Worsham
Administrative Officer

Karl Zittel
Airside Operations Officer

Matthew Brookes
Airport Properties Officer

Scott Garrett
Facilities Management Officer

Mony Chhey
Financial Services Officer

Scott Korobkin
Superintendent of Safety and
Security

Kate Kuykendall
Public Affairs Officer

Ryan McMullan
Noise & Environmental Affairs
Officer



long beach
airport



Long Beach Airport Monthly Noise Report March 2021

COMMERCIAL AIRCRAFT LATE NIGHT ACTIVITY
LGB Current Month & Calendar Year-To-Date Statistics (10 PM- 7AM)
March 2021

				Calendar Year-To-Date		
				2021 2020 Change		
				2021 2020 Change		
March						
10PM - 11PM Activity				2021 2020 Change		
Air Carrier & Commuter Operations				4,450 8,182 -45.6%		
American/Mesa/SkyWest Airlines	0	0		0	0	
Delta/SkyWest/Compass Airlines	1	2	-50.0%	1	7	-85.7%
FedEx	0	0		0	0	
Hawaiian Airlines	0	1	-100.0%	1	1	0.0%
JetBlue Airways	0	4	-100.0%	0	21	-100.0%
Southwest Airlines	1	0	100.0%	1	0	100.0%
UPS	0	0		1	0	100.0%
Subtotal 10PM-11PM	2	7	-71.4%	4	29	-86.2%
11PM- 7AM Activity				2021 2020 Change		
American/Mesa/SkyWest Airlines	0	0		0	0	
Delta/SkyWest/Compass Airlines	0	0		0	0	
FedEx	0	0		0	0	
Hawaiian Airlines	0	1	-100.0%	0	2	-100.0%
JetBlue Airways	0	6	-100.0%	0	16	-100.0%
Southwest Airlines	0	0		0	0	
UPS	0	0		1	0	1000%
Subtotal 11PM-7AM	0	7	-100.0%	1	18	-94.4%
TOTAL	2	14	-85.7%	5	47	-89.4%

Notes:

0.1% (1 of 1,874) of total commercial operations occurred between 10pm - 7am.

0.06 flights - Nightly average for all late night (10:00 PM—7:00 AM) commercial flights, includes unanticipated delays.

0.0 flights - Nightly average for commercial flights after 11 PM.

AIRPORT NOISE VIOLATIONS						
LGB Current Month & Calendar Year-To-Date Statistics						
March 2021						
March				Calendar Year-To-Date		
Air Carrier Noise Violations	2021	2020	Change	2021	2020	Change
American/Mesa Airlines	0	0		0	0	
Delta/SkyWest/Compass	0	0		0	1	-100.0%
FedEx	0	0		0	0	
Hawaiian Airlines	0	1	-100.0%	0	2	-100.0%
JetBlue Airways	0	3	-100.0%	0	14	-100.0%
Southwest Airlines	0	0		0	0	
UPS	0	0		1	0	100.0%
Subtotal	0	4	-100.0%	1	17	-94.1%
Commuter Noise Violations	2021	2020	Change	2021	2020	Change
American/SkyWest Airlines	0	0		0	0	
Delta/SkyWest/Compass	0	0		0	0	
Subtotal	0	0		0	0	
Non-Commercial Noise Violations	2021	2020	Change	2021	2020	Change
All GA, Charter & Other	9	6	50.0%	26	29	-10.3%
TOTAL	9	10	-10.0%	27	46	-41.3%
Monetary Fines	2021	2020		2021	2020	
Airport Surcharges	\$200	\$1,600		\$300	\$6,200	
Consent Decree	\$0	\$18,000		\$0	\$72,000	
TOTAL	\$200	\$19,600		\$300	\$78,200	

AIRPORT OPERATIONS						
LGB Current Month & Calendar Year-To-Date Statistics						
March 2021						
March				Calendar Year-To-Date		
Airport Operations (FAA)	2021	2020	Change	2021	2020	Change
Air Carrier + Commuter Carriers	1,874	2,457	-23.7%	4,450	8,182	-45.6%
Air Taxi + General Aviation	27,795	18,860	47.4%	73,955	66,475	11.3%
Military Operations	85	97	-12.4%	311	292	6.5%
Total Aircraft Operations	29,754	21,414	38.9%	78,716	74,949	5.0%

Notes:

0.03% (9 of 29,669) of the Airport's total aircraft operations (Commercial & GA) resulted in an aircraft noise violation.

0.0% (0 of 1,874) of the Airport's Commercial operations (Commercial & Commuter) resulted in an aircraft noise violation.

AIRCRAFT NOISE VIOLATORS

March 2021

OWNERNAME	DATE	TIME	A/D	RWY	FLIGHT #	A/C TYPE	ORIG/DEST	SEL	LIMIT	STATUS
Falcon Landing LLC	3/2/2021	2:02:54	A	30		GLF6		85.7	79.0	VIO
Paragon Aviation LLC	3/3/2021	15:20:02	D	8L		COL3		92.4	88.0	VIO
Private	3/6/2021	15:43:13	A	26R		LNC4		90.4	88.0	VIO
TCN Transport V LLC	3/6/2021	23:20:01	A	30		GLFV		86.9	79.0	VIO
Private	3/16/2021	8:22:32	D	26R		BE36		96.2	92.0	VIO
Private	3/18/2021	11:29:20	D	26R		BE3S		96.9	92.0	VIO
Air Prestigio LLC	3/19/2021	23:09:51	A	30		GLF4		90.7	79.0	VIO
Career Aviation Co. Inc.	3/20/2021	1:09:41	D	30		SW3		82.2	79.0	VIO
Mustang Sally Aviation LLC	3/25/2021	13:19:09	D	8L		BE58		95.7	88.0	VIO

DEFINITIONS:

A/C Type — Aircraft Type

A — Arrival

D — Departure

RWY — Runway

SEL — SENEL — Single Event Noise Exposure Level (dBA)

T—Touch and Go

VIO—Violation

AIR CARRIER NOISE BUDGET PERFORMANCE

April 2020 - March 2021

RMT #	NOISE BUDGET	ACTUAL	PERCENT BUDGET USED
9	70.7	10.9	15.4%
10	84.6	19.2	22.7%

Source: Long Beach Airport Staff Calculations

DEFINITIONS:

RMT — Remote Monitoring Terminal

TOTAL NOISE BUDGET PERFORMANCE

April 2020 - March 2021

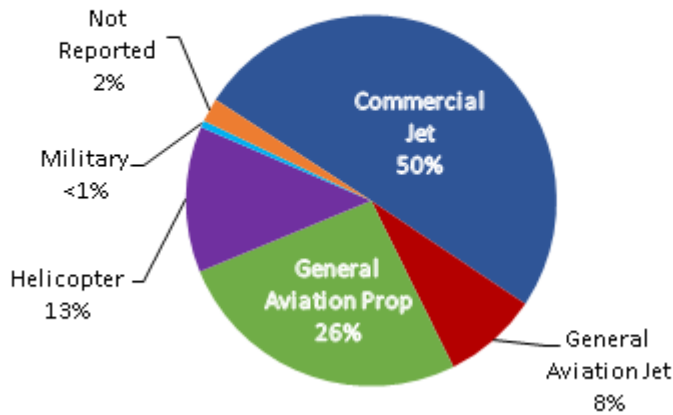
RMT #	NOISE BUDGET	ACTUAL	PERCENT BUDGET USED
9	102.7	16.1	15.7%
10	120.9	27.6	22.8%

Source: Long Beach Airport Staff Calculations

LGB AIRCRAFT NOISE COMPLAINTS

March 2021

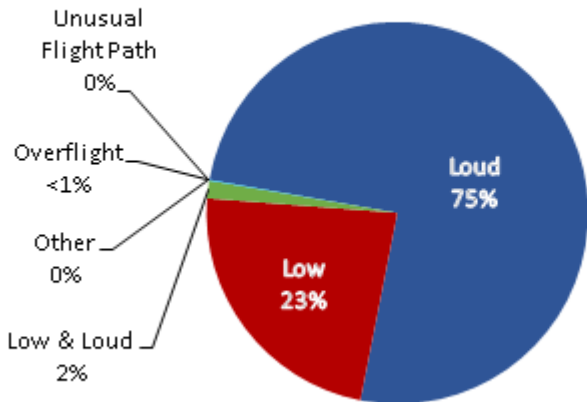
Complaints by Aircraft Types



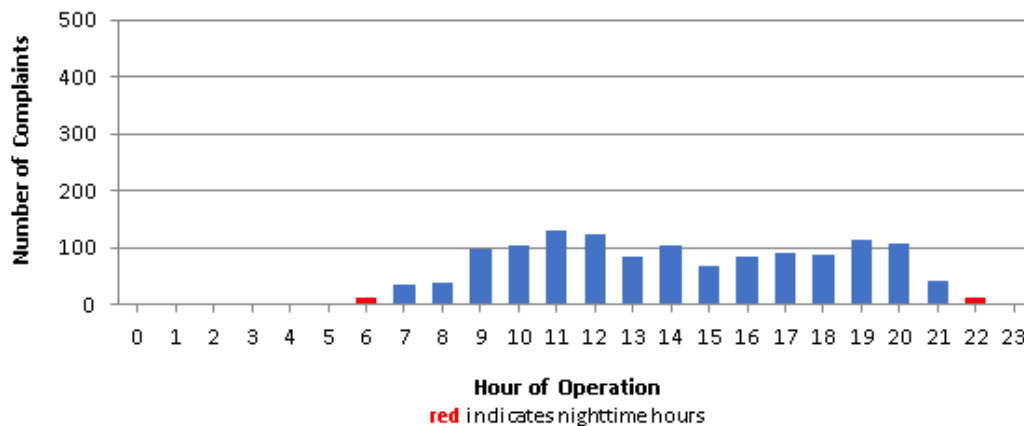
Complaints by Zip Code

Zip Code	Complaints	Units
90242	6	1
90278	92	1
90505	1	1
90746	1	1
90802	1	1
90803	3	1
90805	28	3
90807	83	11
90808	5	2
90815	7	1
91364	3	1
92612	43	1
92615	2	1
92626	448	1
92627	9	1
92646	23	3
92647	496	3
92648	70	5
92649	4	3
92656	5	2
92660	8	2
92661	4	1
92676	5	1
92869	2	1
Not Reported	1	1
Grand Total	1,350	50

Complaints by Concern



Complaints by Time of Operation





long beach airport



Long Beach Airport

4100 E. Donald Douglas Drive, Long Beach, CA 90808

www.lgb.org • lgbapt@longbeach.gov

Administration • (562) 570-2619