

## Airport Advisory Commission

**Miles Nevin**  
Chair

**Katie Larson**  
Vice Chair

**Jeffrey Anderson**

**Christine Bos**

**Wayne Chaney Sr.**

**Robert L. Duarte Jr.**

**Mireya LaFarga**

**Geetanjali Reuben**

**Dede Rossi**

## Airport Management

**Cynthia Guidry**  
Director

**Juan López-Ríos**  
Deputy Airport Director

**Ken Mason**  
Executive Assistant

**Claudia Lewis**  
Manager of Administration  
& Finance

**Ron Reeves**  
Airport Operations & Facilities  
Manager

**Ambi Thurai**  
Engineering Officer

**Dale Worsham**  
Administrative Officer

**Karl Zittel**  
Airside Operations Officer

**Matthew Brookes**  
Airport Properties Officer

**Scott Garrett**  
Facilities Management Officer

**Mony Chhey**  
Financial Services Officer

**Scott Korobkin**  
Superintendent of Safety and  
Security

**Kate Kuykendall**  
Public Affairs Officer

**Ryan McMullan**  
Noise & Environmental Affairs  
Officer



# Long Beach Airport Monthly Noise Report November 2021

**COMMERCIAL AIRCRAFT LATE NIGHT ACTIVITY**  
**LGB Current Month & Calendar Year-To-Date Statistics (10 PM- 7AM)**  
**November 2021**

November				Calendar Year-To-Date		
10PM - 11PM Activity	2021	2020	Change	2021	2020	Change
<b>Air Carrier &amp; Commuter Operations</b>	<b>2,723</b>	<b>1,276</b>	<b>113.4%</b>	<b>22,391</b>	<b>15,908</b>	<b>40.8%</b>
American/Mesa/SkyWest/Envoy	0	0		2	0	100.0%
Delta/SkyWest Airlines	1	3	-66.7%	13	12	8.3%
FedEx	0	0		0	0	
Hawaiian Airlines	0	0		3	1	200.0%
JetBlue Airways	0	0		0	22	-100.0%
Southwest Airlines	1	0	100.0%	34	0	100.0%
UPS	0	0		1	0	100.0%
<b>Subtotal 10PM-11PM</b>	<b>2</b>	<b>3</b>	<b>-33.3%</b>	<b>53</b>	<b>35</b>	<b>51.4%</b>
<b>11PM- 7AM Activity</b>	<b>2021</b>	<b>2020</b>	<b>Change</b>	<b>2021</b>	<b>2020</b>	<b>Change</b>
American/Mesa/SkyWest/Envoy	3	0	100.0%	3	0	100.0%
Delta/SkyWest Airlines	0	0		2	0	100.0%
FedEx	0	0		0	0	
Hawaiian Airlines	0	0		0	2	-100.0%
JetBlue Airways	0	0		0	18	-100.0%
Southwest Airlines	0	0		2	0	100.0%
UPS	0	0		1	0	100.0%
<b>Subtotal 11PM-7AM</b>	<b>3</b>	<b>0</b>	<b>100.0%</b>	<b>8</b>	<b>20</b>	<b>-60.0%</b>
<b>TOTAL</b>	<b>5</b>	<b>3</b>	<b>66.7%</b>	<b>61</b>	<b>55</b>	<b>10.9%</b>

Notes:

0.2% (5 of 2,723) of total commercial operations occurred between 10pm - 7am.

0.2 flights - Nightly average for all late night (10:00 PM—7:00 AM) commercial flights, includes unanticipated delays.

0.1 flights - Nightly average for commercial flights after 11 PM.

<b>AIRPORT NOISE VIOLATIONS</b>						
<b>LGB Current Month &amp; Calendar Year-To-Date Statistics</b>						
<b>November 2021</b>						
<b>November</b>				<b>Calendar Year-To-Date</b>		
<b>Air Carrier Noise Violations</b>	<b>2021</b>	<b>2020</b>	<b>Change</b>	<b>2021</b>	<b>2020</b>	<b>Change</b>
American/Mesa/SkyWest/Envoy	0	0		0	0	
Delta/SkyWest Airlines	0	0		2	1	100.0%
FedEx	0	0		0	0	
Hawaiian Airlines	0	0		0	2	-100.0%
JetBlue Airways	0	0		0	16	-100.0%
Southwest Airlines	0	0		1	0	100.0%
UPS	0	0		1	0	100.0%
<b>Subtotal</b>	<b>0</b>	<b>0</b>		<b>4</b>	<b>19</b>	<b>-78.9%</b>
<b>Commuter Noise Violations</b>	<b>2021</b>	<b>2020</b>	<b>Change</b>	<b>2021</b>	<b>2020</b>	<b>Change</b>
American/Mesa/SkyWest/Envoy	0	0		0	0	
Delta/SkyWest Airlines	0	0		0	0	
<b>Subtotal</b>	<b>0</b>	<b>0</b>		<b>0</b>	<b>0</b>	
<b>Non-Commercial Noise Violations</b>	<b>2021</b>	<b>2020</b>	<b>Change</b>	<b>2021</b>	<b>2020</b>	<b>Change</b>
All GA, Charter & Other	13	7	85.7%	133	105	26.7%
<b>TOTAL</b>	<b>13</b>	<b>7</b>	<b>85.7%</b>	<b>137</b>	<b>124</b>	<b>10.5%</b>
<b>Monetary Fines</b>	<b>2021</b>	<b>2020</b>		<b>2021</b>	<b>2020</b>	
Airport Surcharges	\$700	\$0		\$4,800	\$8,400	
Consent Decree	\$0	\$0		\$0	\$78,000	
<b>TOTAL</b>	<b>\$700</b>	<b>\$0</b>		<b>\$4,800</b>	<b>\$86,400</b>	

<b>AIRPORT OPERATIONS</b>						
<b>LGB Current Month &amp; Calendar Year-To-Date Statistics</b>						
<b>November 2021</b>						
<b>November</b>				<b>Calendar Year-To-Date</b>		
<b>Airport Operations (FAA)</b>	<b>2021</b>	<b>2020</b>	<b>Change</b>	<b>2021</b>	<b>2020</b>	<b>Change</b>
Air Carrier + Commuter Carriers	2,723	1,276	113.4%	22,391	15,908	40.8%
Air Taxi + General Aviation	27,161	23,306	16.5%	300,143	246,454	21.8%
Military Operations	117	95	23.2%	1,199	1,139	5.3%
<b>Total Aircraft Operations</b>	<b>30,001</b>	<b>24,677</b>	<b>21.6%</b>	<b>323,733</b>	<b>263,501</b>	<b>22.9%</b>

Notes:

0.04% (13 of 29,884) of the Airport's total aircraft operations (Commercial & GA) resulted in an aircraft noise violation.  
0.0% (0 of 2,723) of the Airport's Commercial operations (Commercial & Commuter) resulted in an aircraft noise violation.

# AIRCRAFT NOISE VIOLATORS

## November 2021

OWNERNAME	DATE	TIME	A/D	RWY	FLIGHT #	A/C TYPE	ORIG/DEST	SEL	LIMIT	STATUS
Swift Air LLC/iAero Airways	11/1/2021	23:11:47	D	30		B734		93.1	79.0	VIO
Reach Co LLC	11/2/2021	23:27:07	A	30		BE30		84.8	79.0	VIO
Leconte Dassault LLC	11/6/2021	23:24:17	A	30		F900		87.4	79.0	VIO
Moran Consulting Corp.	11/9/2021	17:45:06	A	26L		BE35		98.2	93.0	VIO
TVPX Aircraft Solutions Inc. Trustee	11/12/2021	3:01:12	A	30		GLEX		86.2	79.0	VIO
TRN Aviation LLC	11/14/2021	1:37:33	A	30		C550		83.2	79.0	VIO
JB Aviation LLC	11/15/2021	5:24:18	A	30		LJ45		86.4	79.0	VIO
Bank of Utah Trustee	11/17/2021	0:52:33	A	30		GL5T		86.7	79.0	VIO
Private	11/19/2021	23:34:08	A	30		G650		87.6	79.0	VIO
Private	11/20/2021	15:45:42	T	26R		C172		n/a	n/a	VIO
TS Aviation LLC	11/22/2021	11:07:12	D	30		GLF3		105.4	102.5	VIO
Corporate Flight Inc	11/24/2021	2:08:18	A	30		H25B		90.0	79.0	VIO
Cavalljet Corp	11/24/2021	3:25:33	D	30		LJ45		83.3	79.0	VIO

**DEFINITIONS:**

**A/C Type** — Aircraft Type

**A/D** — Arrival/Departure

**RWY** — Runway

**SEL** — SENEL — Single Event Noise Exposure Level (dBA)

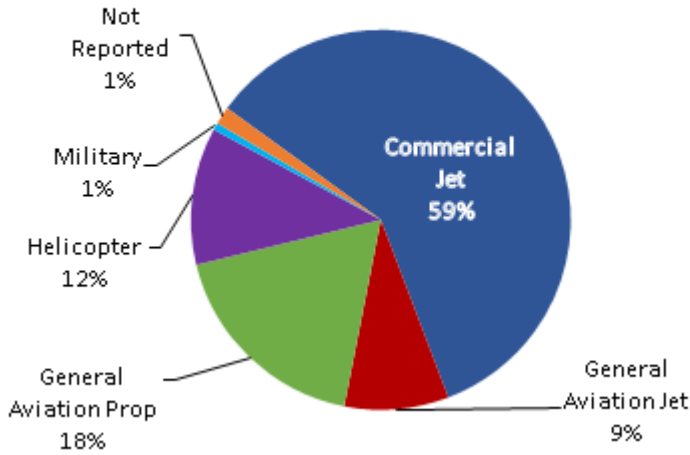
**T** — Touch and Go operation

**VIO** — Violation

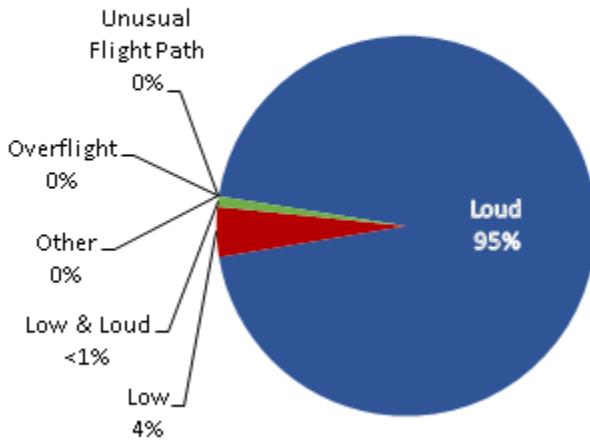
# LGB AIRCRAFT NOISE COMPLAINTS

November 2021

## Complaints by Aircraft Types



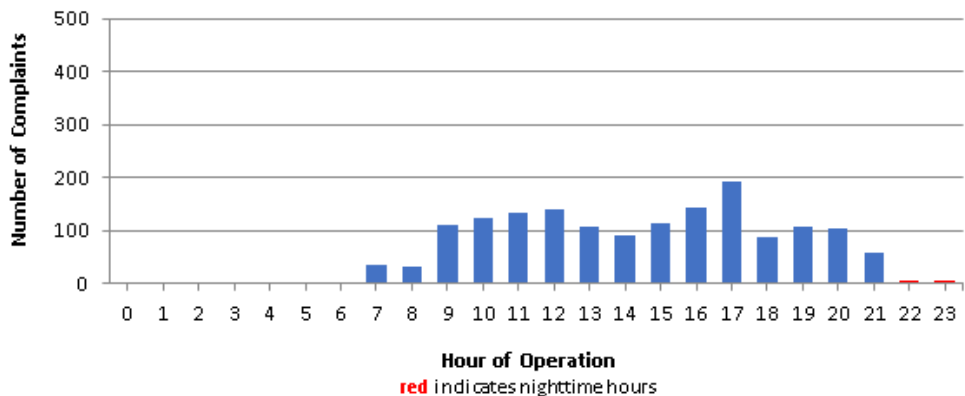
## Complaints by Concern



## Complaints by Zip Code

Zip Code	Complaints	Units
90242	8	1
90254	1	1
90278	55	1
90745	1	1
90746	26	1
90805	4	1
90807	56	15
90808	5	4
90810	2	2
90815	1	1
91364	1	1
92612	6	1
92626	465	1
92627	7	1
92629	2	1
92646	2	1
92647	865	2
92648	69	9
92649	2	1
92651	1	1
92653	3	1
92656	9	1
92660	3	1
92662	1	1
92676	1	1
93105	1	1
Not Reported	4	3
<b>Grand Total</b>	<b>1,601</b>	<b>56</b>

## Complaints by Time of Operation





# long beach airport



## Long Beach Airport

4100 E. Donald Douglas Drive, Long Beach, CA 90808

[www.lgb.org](http://www.lgb.org) • [lgbapt@longbeach.gov](mailto:lgbapt@longbeach.gov)

Administration • (562) 570-2619