

BUSINESS PARTNER BRIEF

NOVEMBER 2020



Director's Message

Each November we take a moment to reflect and be grateful. Our Thanksgiving celebrations may look a little different this year, but the sentiment remains the same and I want to express heartfelt THANKS to all our business partners! Your efforts contribute to LGB's success.

May you and your loved ones enjoy a wonderful Thanksgiving holiday! - Cynthia Guidry

Gulfstream Announcement

Gulfstream's decision to phase out their operations at Long Beach Airport is a significant setback in what has already been a tough year. Gulfstream has been a tremendous business partner since they first established themselves at Long Beach Airport in 1986 and is part of the area's rich aviation history. We are incredibly thankful to them for their partnership over these many years and we wish them all the best as they navigate the current business environment. We've all seen how this pandemic has rippled across the aviation industry and has forced organizations to make very challenging business decisions.

There is no denying that these are trying times, but we have so many reasons to be hopeful, too. LGB is only a few years away from its 100th birthday and that means that our airport has witnessed a few things when it comes to disruptions in the aviation industry!



While change can be very hard, it also presents an opportunity for growth and renewal. As manufacturing jobs have slowly transitioned away from Southern California over the years, for example, Long Beach has experienced a boom in satellite and rocket companies re-locating around Long Beach Airport, all part of the new “space race.” It started with Virgin Orbit and now they’ve been joined by SpinLaunch and Rocket Lab. LGB will adapt to this change and will aggressively seek out new revenue opportunities.

I know this news affects many of your own businesses, too. Please reach out to me or our Leasing team if you’d like to talk through these impacts. So much of our success depends on one another and we’ll need to rely on each other to get through this!

LGB Business Partner Spotlight: FlightSafety

This month we’d like to introduce Todd Bitgood, Center Manager for FlightSafety’s Long Beach Learning Center. Todd has worked for FlightSafety for nearly 20 years and started as an instructor at FlightSafety Tucson in the Learjet Program. He is a certificated Airline Transport Pilot with Gulfstream G-VI, Learjet LR-60, and LR-Jet type ratings; he is also a Gold Seal Certified Flight Instructor (CFI, CFII, and MEI) with over 6,000 hours as a pilot!



Todd Bitgood is the Center Manager for FlightSafety’s Long Beach Learning Center.

Q: Can you tell us about your business?

A: FlightSafety International is the world’s premier professional aviation training company and supplier of flight simulators, visual systems and displays to commercial, government and military organizations. FlightSafety International provides training for pilots, technicians and other aviation professionals from 167 countries and independent territories.

FlightSafety operates the world’s largest fleet of advanced full-flight simulators at Learning Centers and training locations in the United States, Australia, Brazil, Canada, China, France, Hong Kong, India, Japan, the Netherlands, Norway, Singapore, South Africa and the United Kingdom.

Here at our Learning Center in Long Beach, which first opened in 1967, we train pilots and cabin safety attendants on a variety of aircraft including Gulfstream G650, G550, GV, and GIV, as well as Beechcraft King Air and Cessna Citation aircraft. Maintenance technician training is also conducted on most Gulfstream aircraft types.

Q: How has COVID-19 affected your business?

A: We had a temporary slowdown in late March and early April but have steadily been increasing ever since. However, we are training fewer international customers due to COVID-19 related travel restrictions.

Q: What do you like best about operating at LGB?

A: It's a great environment so close to the airport terminal and our fantastic Southern California weather! We're able to serve a large customer base here on the West Coast and are highly accessible through the three airports of LGB, LAX and SNA.

Q: Anything else you'd like to share with your fellow LGB business partners?

A: We very much enjoy the camaraderie and goodwill that we share with our LGB airport community businesses and organizations. Our employees and customers really like the "hometown atmosphere" here at LGB even though we are nestled in the enormous Los Angeles metro region of over 22 million people!

LGB's Outdoor Space a Breath of Fresh Air for Travelers

Airport architects predict that the COVID-19 pandemic will change airport design forever, including by better incorporating outdoor spaces that feel safe and inviting. I'm pleased to share with you that LGB was [recently featured](#) on the Airports Council International (ACI) website as being ahead of the curve as it relates to this emerging trend. ACI is the trade organization for airports around the world.

ACI noted that, with the opening of our award-winning passenger concourse in 2012, LGB became one of the first airports in the country to build a large outdoor space (approximately 20,000 square feet) within a modern passenger concourse. Our outdoor concourse was also chosen for the cover of "[Centerlines](#)," the quarterly print magazine for ACI.

We are fortunate that LGB's award-winning concourse continues to attract accolades, especially as it relates to passenger concerns about health and safety during the pandemic. Please feel free to share these positive stories with your networks!



LGB was one of the first airports in the country to build a large outdoor space within a modern concourse.

Phase II Update

Phase II construction continues to move forward. Last month, the concrete slab on grade placement was completed for the new Checked Baggage Inspection System (CBIS) facility. It looks fantastic!

Demolition of the breezeway south of the terminal unveiled a glimpse of the past. For the first time in many years, the porte-cochère on the south side of our historic 1941 terminal is now fully visible again! Vehicles previously passed through this structure to drop off passengers. You can spot the porte-cochère in this black and white photo of the terminal circa 1963.



The concrete placement slab on grade for the CBIS building was completed last month.



The porte-cochère is visible once again.



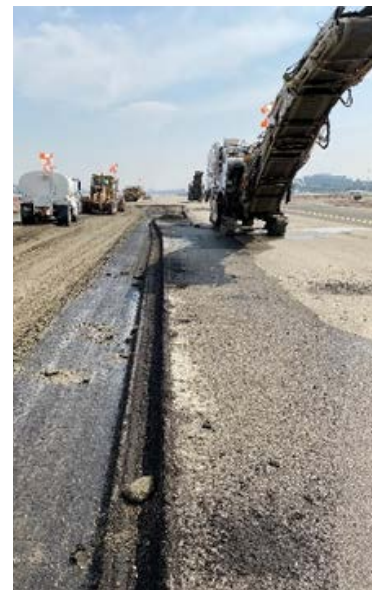
Long Beach Airport terminal circa 1963.

Taxiway D Update

We've started our Taxiway D Improvement Project that will enhance airfield safety. So far, approximately 16,000 sq. yards of existing asphalt concrete pavement has been removed. The milling operations will result in recycled asphalt that can be used on other projects. Recycling of existing material on site saves money and time and is environmentally friendly.



Once removed, the material is hauled away to be recycled.



Grading operations are underway on Taxiway D

Airport Carbon Accreditation

Sustainability is a top priority for our Airport. This is the future of the aviation industry and we want to ensure that LGB is at the forefront of the positive changes taking place in airports across the nation.

I'm pleased to announce that we will be seeking Airport Carbon Accreditation (ACA) for LGB, which is an independent program that tracks and monitors the carbon footprint of airports around the world. This first step is a huge milestone towards our goal to become a carbon neutral airport and a leader in sustainability.

Recently, our Noise and Environmental Affairs Officer, Ryan McMullan, gave a [presentation](#) about LGB and airport tenants' sustainability efforts to the City's Sustainability Committee. I'm sure you'll find this update informative.

LGB Seeks Local Artists for Pandemic Inspired Exhibit

The Airport, in partnership with the Arts Council for Long Beach (ACLB), is seeking uplifting and hopeful art pieces from local women artists for a pandemic-themed art exhibit. Selected works will be printed and installed on the large construction barricades in our publicly accessible areas for a minimum of six months.

The focus on artists who are women is part of ACLB's National Endowment for the Arts grant commemorating the centennial anniversary of the 19th Amendment, which granted women the right to vote. Nearly 20 pieces will be chosen for display and artists will receive a \$500 honorarium for each piece selected by the panel. If you know any artists who may be interested in this exciting project, please encourage them to upload their digital files to the [ACLB website](#) by November 14.

September Commercial Flight Activity Stats

We continue to experience a sharp decline in passengers, but we've also had some modest increases that provide a glimmer of hope. Airline passenger traffic at LGB decreased 81 percent in September 2020 compared with the same period in 2019. In September 2020, LGB served 55,007 passengers. Total air cargo carried by aircraft, both inbound and outbound, decreased 29.4 percent in September 2020 compared to the same time the previous year. In September 2020, 1,104 tons passed through LGB.

Commercial Flight Activity Report

September 2020

	September 2020	September 2019	% Change	YTD 2020	YTD 2019	% Change
Passenger Traffic						
Enplanements	27,814	145,542	-80.9%	440,526	1,326,997	-66.8%
Deplanements	27,193	143,960	-81.1%	442,384	1,321,859	-66.5%
Total Passenger Traffic	55,007	289,502	-81.0%	882,910	2,648,856	-66.7%
Total Air Cargo (Tons)	1,104	1,563	-29.4%	11,500	15,435	-25.5%

Definitions:

Passenger Traffic - Number of airline passengers both enplaned (departures) and deplaned (arrivals).

Air Cargo - Cargo carried by commercial aircraft, both inbound and outbound.

LGB Administrative Office Closures

As a reminder, to help balance the City's budget during this economic downturn Long Beach Airport administrative offices will be closed alternating Fridays until the furlough period ends September 30, 2021. This month a designated furlough day will be the scheduled work day before the City holidays. Airport operations, security and janitorial services will continue uninterrupted.

LGB administrative offices will be closed on the following days:

- Friday, November 13
- Wednesday, November 25
- Thursday, November 26
- Friday, November 27

A complete [list of furlough closure dates](#) is available on the City's website.