

**May 1 - 4**

Congressional Cup 2025  
(Belmont Pier)

**May 10**

Kahakai Battle of the Breakwater  
(Marine Stadium)

**May 16-18**

Long Beach Pride  
Festival & Parade  
(Marina Green & Ocean Blvd.)

**May 31**

LA Wine Fest  
(Shoreline Park)

**June 7**

LB Grand National Ski Race  
(South Shore Launch Ramp)

**June 7-8**

Cali Vibes Festival  
(Marina Green/Rainbow  
Lagoon)

**June 11**

Movie Night Market  
(Harry Bridges  
Memorial Park)

**June 14**

LB Juneteenth Celebration  
(Rainbow Lagoon)

**June 24**

Moonlight Movies at  
the Beach  
(Granada Beach)

## MESSAGE FROM THE BRIDGE



Daylight Saving Time is in full force, The 2025 LB Grand Prix has come and gone and Congressional Cup match racing is taking over the water in front of the Belmont Veterans Memorial Pier.... It is Beach season!

So many amazing activities and recreational opportunities abound in our Long Beach Marinas footprint in the months of May and June. The Acura Grand Prix of Long Beach in April really just kicks off the summer season and sets the stage for marine-related recreation for the next several months. Of course, we have the Congressional Cup during the first weekend of May, which is celebrating 60 years of world-class match racing competition in Long Beach this year. The international regatta gives way to rowing and outrigger regattas in Marine Stadium

the next couple of weeks and then PRIDE comes to Marina Green and Ocean Boulevard with the Long Beach Pride Festival and Long Beach Pride Parade on May 17 & 18. Things only get better in June with the Cali Vibes festival on June 7 & 8 and the Juneteenth Celebration at Rainbow Lagoon on June 14.

While these world class events are entertaining and exciting, they are also a lot to handle logistically. They take up space in the marinas, on the beaches and in marina parking lots. Your Marine Bureau staff is in constant communication with our Special Events Office to mitigate these types of impacts on our customers. Nevertheless impacts do remain and they are inconvenient. Our Marina offices will start communicating with you at least 30 days out on special events that will have a considerable impact on marina access. I highly recommend looking at the City's Special Events Calendar to prepare for upcoming events around your vessel. The best way to mitigate access issues is to be ready for them in advance. Also give a call to our Marina offices and ask about a free reciprocal stay at either Shoreline Marina or Alamitos Bay if you want to get away from an event with your vessel.

Lastly, as you prepare for the summer season brush up on navigation and waterways rules. It is going to busy out on the water this summer and having a fresh glance at the ABCs of Boating, available in our marina offices, could help you prevent an on-water accident or assist another boater in a time of need.

Stay Well and Safe Boating,  
Todd Leland, Manager  
Marinas & Beaches

## THE LATEST NEW ALERTS AND REMINDERS



Marina Offices are open and accepting new vessel permit applications. To provide more comfortable and efficient customer service we have hybrid front desk/window service at ABM and Shoreline offices. Note – Many requests can still be readily handled by phone or email.

Marine Advisory Commission, May 8, 2:30pm – Financial Management staff will make an update presentation to the MAC to provide information on the Marina Revenue Bonds Series 2025 bond sale.

Public Mooring locations – Long Beach Marinas has several public mooring docks located in Rainbow Marina, Shoreline Marina and Alamitos Bay. 3-hour time limit will be enforced. Overstay will result in citation and fine. Repeated citation can result in impound of vessel.

Unauthorized commercial activity is **ILLEGAL IN LONG BEACH** – Please do not engage in unauthorized commercial activity at, on or near Long Beach Marinas property. Violators can and will be cited and punished to the full extent of applicable law. Reminder – Unauthorized Commercial activity will put your slip permit in jeopardy of cancellation.

**DID YOU KNOW** Memorial Day, originally called Decoration Day, was first observed on May 30, 1868, to honor the Union soldiers who died in the Civil War. The highest tides in the world occur in the Bay of Fundy in Canada, where the tidal range can reach up to 52 feet. For comparison Long Beach's tidal range is usually between 3ft-5ft.

## We Give Peace of Mind to Boat Owners

by providing comprehensive and detailed photographic or video updates on the exterior condition of their boats.

**BoatPal.com**



**SHORELINE**  
YACHT GROUP

When you are ready to  
buy or sell, contact:

**Kimberly LeVern**  
**213.798.5117**

Kimberly@kimberlyforyachts.com

[www.shorelineyachtgroup.com](http://www.shorelineyachtgroup.com)



Professional and experienced service  
Available 7 days a week

**CELEBRATING OUR 50<sup>TH</sup> YEAR!**



**Long Beach Yacht Center**

at Shoreline Marina

**ALMOST A YEAR-ROUND BOAT SHOW**



📍 114 E Shoreline Drive, Gangway P  
Long Beach, CA 90802

☎ (562) 983-6622 🌐 [www.cayachtco.com](http://www.cayachtco.com)

✉ [info@cayachtco.com](mailto:info@cayachtco.com)

## SMART RESTROOM PILOT PROGRAM KICKS OFF



On April 15 and April 16 crews deployed portable restrooms at four City Park and Marina locations. Partnering with Throne Labs to improve the local restroom experiences across the city, the pilot program is scheduled to last four months.

“Public restrooms are necessary infrastructure that serves everyone in our community from pickleballers and children to the unhoused,” said Mayor Rex Richardson. “This pilot program with Throne represents our commitment to improving the cleanliness, accessibility, and safety standards of public facilities. By implementing this innovative solution that has proven successful in communities throughout LA County, we’re creating more welcoming public spaces in Long Beach parks.”

Throne restrooms offer ADA-accessible facilities featuring running water sinks, flushing toilets, baby changing stations, and free menstrual products. Each unit is equipped with 21 sensors that provide real-time data on the restroom’s status, health, potential misuse, and usage statistics. Users can access Thrones via text message or mobile application, creating accountability while maintaining user privacy.

There are currently 22 Thrones across LA County that maintain a cleanliness rating that exceeds 4 out of 5 stars, from suburban parks to busy transit stations. After each visit, users provide real-time cleanliness ratings, helping the operations team maintain consistently excellent experiences. Throne has served Long Beach’s Willow Station since May 2024 as part of Throne’s partnership with LA Metro and has proven successful with nearly 13,000 visits by 2,900 users and no security issues.

The pilot program with Throne was facilitated through the City’s Parks, Recreation and Marine Department, and the Technology and Innovation Department (TID). It will be evaluated through comprehensive data collection measuring key performance metrics, including usage patterns, user satisfaction ratings, cleanliness levels, uptime percentage, maintenance responsiveness, and comparative cost analysis.

In the initial two weeks of deployment at DeForrest Park, Harvey Milk Park, Belmont Pier and Shoreline Marina the smart restrooms have been used with high frequency and have been getting positive community reviews. A public survey has been posted at all the Throne locations to gather direct feedback from residents and visitors about their experiences and perceptions of safety, ensuring community voices help shape future restroom infrastructure decisions.



## BASIN 3 GETS THE LAWN TO GARDEN TREATMENT



With new projects in Alamitos Bay Marina, Basin 3 the Marine Bureau Landscape group continues to address non-functional turf in our Marinas. In 2023 the State of California passed Assembly Bill 1572. This bill prohibits the use of potable water to irrigate nonfunctional turf on commercial, municipal, institutional, and multifamily residential properties. A phase-in of this ban for specified property types begins on January 1, 2026.

According to AB 1572, "there is an urgent need for additional efforts to reduce unnecessary water use in urban areas. Although drought conditions from 2014-2017 were said to be the most severe drought since statehood, California saw dry conditions return quickly, with severe curtailments of State Project water deliveries imposed in 2022. At the same time, water supply conditions deteriorated rapidly in the Colorado River Basin, a major source of water for urban Southern California." AB1572 states that efforts currently underway to address the shortfall of water in the Colorado River Basin as further evidence of the need for California to reduce its overall water use and demand on Colorado River water.

AB1572 also notes a large portion of California's treated drinking water is used to irrigate urban landscapes. In a year without drought restrictions, roughly half of all publicly supplied water is used outdoors, primarily for landscape irrigation.

AB 1572 is an extension of past and current state policies to reduce unnecessary water consumption in urban landscapes. It is intended to help California businesses and communities save both water and money, and transition to sustainable alternatives that can keep landscapes beautiful.

Many square feet of nonfunctional turf space has been identified in the Long Beach Marinas. To get ahead of the January 2026 phased ban on watering, our Beach Maintenance Superintendent Kelly Armstrong and his Landscape team lead by Jeff King, Park Maintenance Supervisor have partnered with Long Beach Utilities staff to take advantage of the City's established Lawn 2 Garden rebate program. City staff have also made a community partnership connection with the Surfrider Foundation to assist in the construction of these new water-wise garden spaces.

The layout plans and plant lists for Alamitos Bay Marina are being curated to adhere to local Coastal regulations and meet South East Area Specific Plan environmental standards. Marine Bureau staff is making sure to leave areas of recreational turf interspersed between the new garden locations for pet walking and other recreational activities.

**THE BEST SELECTION OF YACHTS** **LET THE SEA SET YOU FREE**

Ullman yacht sales is the new kid on the block but not new to the neighborhood. We are a part of long, rich history in sailing and strive to bring the same excellence to yacht brokering.

**ERIC HINDERBERGER**  
(562) 377-4460  
ERIC.HINDERBERGER@GMAIL.COM  
ULLMANYACHTSALES.COM

**LET US HELP YOU BUY OR SELL YOUR NEXT YACHT TODAY**

**ULLMAN YACHT SALES**

**SEACOAST YACHTS**  
LOCAL KNOWLEDGE - UNSURPASSED EXPERIENCE - DIGITAL MARKETING

**Sell your boat or buy one... just call me!**

**DANIELLE LORD**  
562-213-2900  
dani@seacoastyachts.com  
www.seacoastyachts.com

## PREVENTING THEFT, IF YOU SEE SOMETHING, SAY SOMETHING

Boat and gear theft is an unfortunate reality and often a crime of opportunity, when valuables are left in plain sight. There are a few precautions you can take to ensure your boat and gear are not targeted.

- Make sure you lock hatches and doors each time you leave the boat for an extended period.
- Stow fishing gear and other valuable items out of sight or off the vessel entirely.
- Consider marking your gear with a unique identifying mark to make it harder for thieves to sell stolen items.
- Chain or lock outboard motors and dinghies to a structural piece of the boat (cleats, stanchions, transoms, etc...).
- Trailers stored in dry lots are encouraged to use coupler locks and/or wheel locks, preventing unauthorized individuals from hooking up to your trailer.

If you do experience theft, please be sure to let the Marina Management team know. If we can identify patterns of occurrences, we can use our resources to help prevent and stop these events. In addition, if you see any suspicious behavior, please report it immediately to Marine Patrol (562) 435-6711.



## THE LONG BEACH MUNI BAND RETURNS TO MARINE STADIUM THIS SUMMER.

PERFORMANCES START JUNE 25.  
VISIT [LBPARKS.ORG](http://LBPARKS.ORG) FOR SCHEDULE.

### Pat's Tackle – Hard to find, worth the trip.



Pat's Tackle stocks everything that fishermen (and hoop-netters) need for local inshore and offshore fishing. Everything from Bay Bass to Bluefin Tuna to Spiny Lobsters, our comprehensive inventory will get you rigged up and ready.

- Frozen Bait
- Line & Lures
- Rigging Tackle
- Knives & Tools
- Rods and Reels
- Licenses – all types
- Line spooling



#### PAT'S TACKLE

On-the-Water Tackle Store

Located on the Alamitos Bay Fuel Dock

227 N. Marina Dr., Long Beach CA 90803 • (562) 594-0888



### Shoreline Yacht Club of Long Beach

*The Friendly Club*

## Call To Arrange a Private Tour (562) 435-4093

### Memberships Available Enhance Your Boating Experience with New Friends

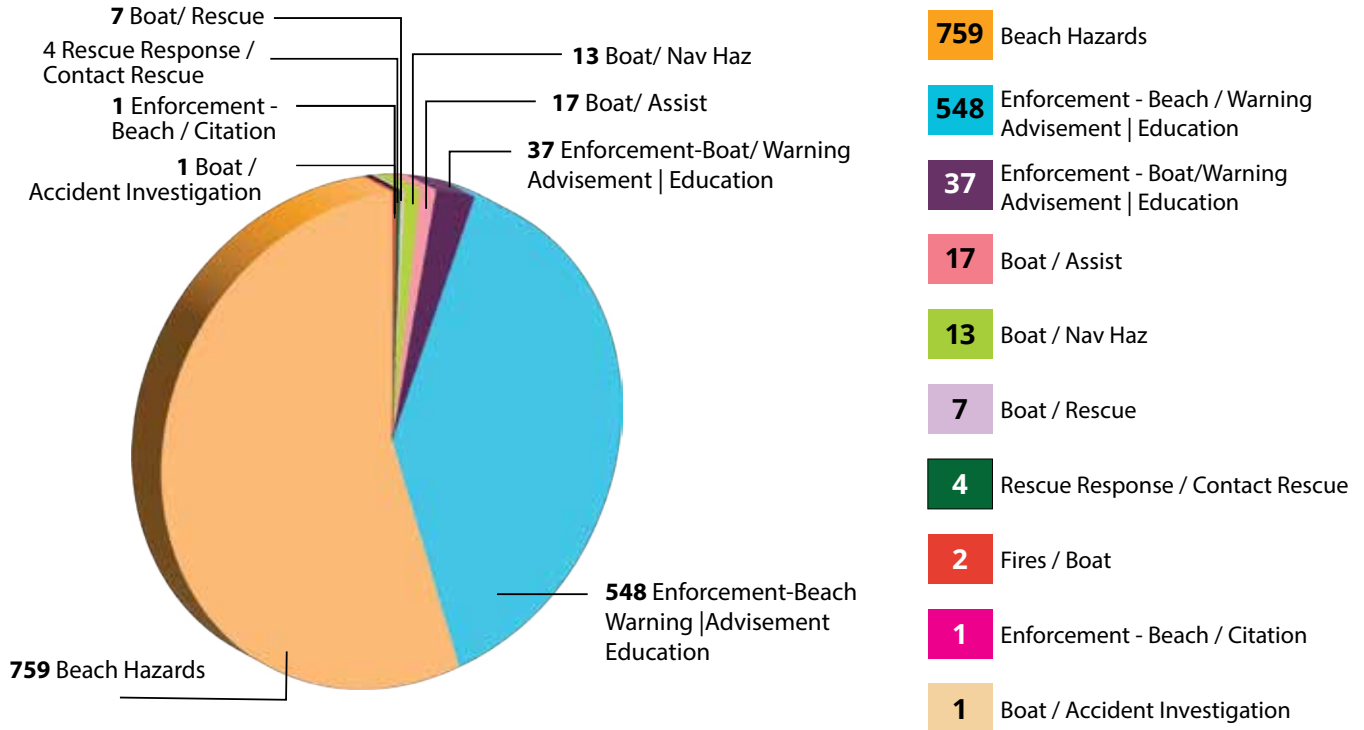
- Monthly, Organized Cruises
- Harbor Racing
- Social Events - over 500 members
- Learn to Sail and Other Educational Activities
- Five Day Meal and Bar Service in our Clubhouse and on our Beautiful Deck

386 Shoreline Drive South

Office closed Mon. & Tues. • Office: (562) 435-4093

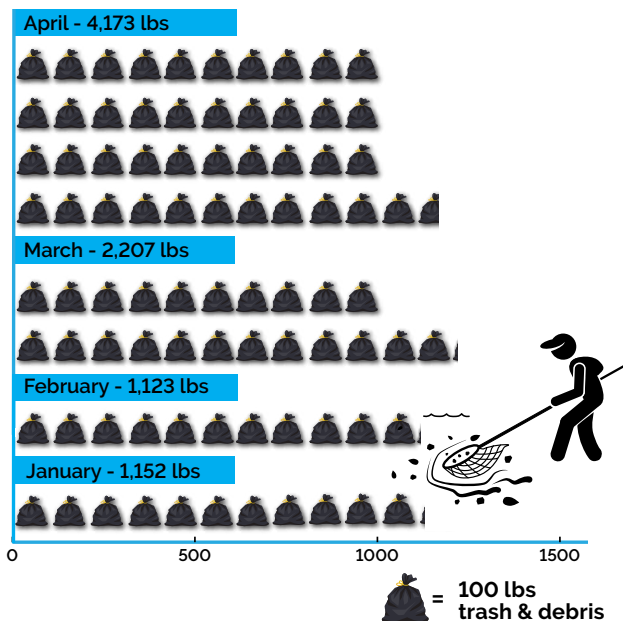
# MARCH MARINE SAFETY

## MARCH 2025

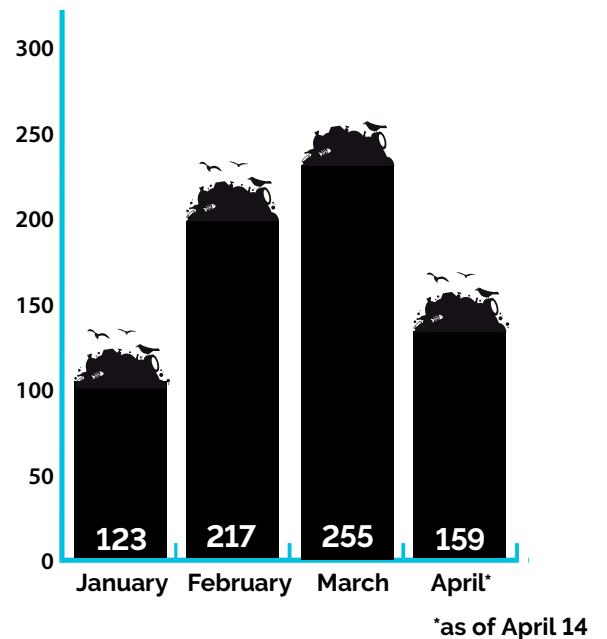


# BEACH & MARINE MAINTENANCE

## Alamitos Bay Trash and Debris Cleared By Hand Using Skimmer Nets



## Amount of Debris in Tons Removed From Beaches





# TIDE CHARTS

**BELMONT MOORING COMPANY**

BELMONT PIER, LONG BEACH, CA  
562-881-0567  
www.belmontmoorings.com

Visit: [www.belmontmoorings.com](http://www.belmontmoorings.com)

Reservations available by text at  
562 881-0567

Payment methods accepted:  
Venmo@belmontmoorings

Cash|Paypal:  
Belmontmoorings@gmail.com

Rules, Regulations and Pricing  
Available on Our Website



**D-IVES PLUS**  
Quality Underwater  
Hull & Yacht Maintenance

Keith Ives-Owner  
(562) 594-8957  
divesplus@earthlink.net

PLEASE CELEBRATE RESPONSIBLY

**IT IS ILLEGAL TO OPERATE ANY VESSEL WHILE UNDER THE INFLUENCE OF ALCOHOL OR DRUGS. THE LEGAL LIMIT IS BAC .08%**

## CONTACT US

Long Beach Police.....911	Alamitos Bay Office.....(562) 570-3215
Marine Patrol Emergency ..... 911 or 9911 (Dock Phone)	<b>Maintenance:</b>
Non Emergency.....(562) 435-6711	During working hours.....(562) 570-1582
Shoreline Office ..... (562) 570-4950	After office hours .....(562) 570-3101



Marina Reader  
Published bi-monthly by the Marine Bureau of the City of Long Beach  
Department of Parks, Recreation & Marine  
205 Marina Drive, Long Beach, CA 90803  
www.longbeach.gov/park/marine  
Contact Todd Leland (562) 570-4960 or  
todd.leland@longbeach.gov

CITY OF  
**LONG BEACH**