



# El Dorado Duck Pond Project Update

Virtual Community Meeting

Wednesday, August 10, 2022

6:00 PM – 7:00 PM



# El Dorado Duck Pond Project Update

## Overview

### Agenda

- Meeting Guidelines
- Introductions
- Presentation
- Q&A

# El Dorado Duck Pond Project Update

## Zoom Meeting Guidelines

### Reminders

- This meeting will be recorded
- Participants are requested to stay muted during presentation
- Use "raise" hand feature to queue up for questions at 6:35 P.M.
- Q&A: 2-minutes each per person
- Presentation and recording will be made available on City's project web page by Friday, August 12, 2022.

# El Dorado Duck Pond Project Update

## Introductions

### City of Long Beach

- City Council District 4
- Public Works
- Parks, Recreation, and Marine

### Project Contractors

- Psomas (Project/Construction Management)
- Los Angeles Engineering (General Contractor)
- LSA (Biologist Consultant)

# El Dorado Duck Pond Project Overview

Beginning  
Fall 2022

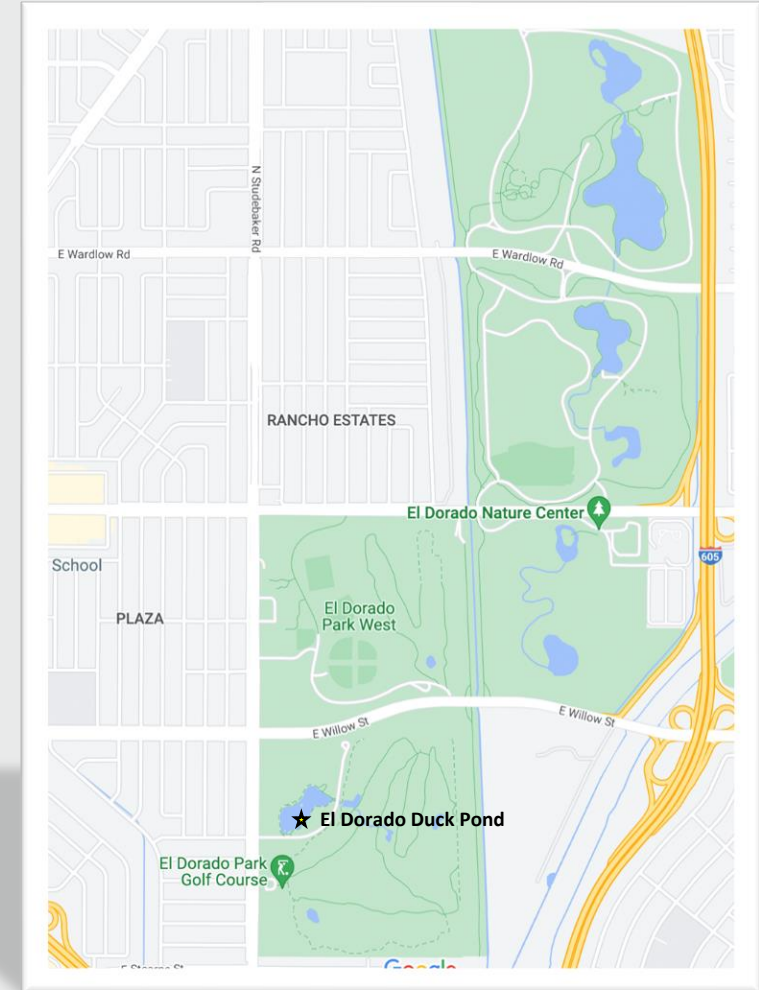
—  
Completion  
Winter 2023



# El Dorado Duck Pond Project Update

## Project Background

- The El Dorado Duck Pond is in El Dorado Park West, a 273-acre regional park located along the eastern border of Long Beach.
- The area around the duck pond includes many recreational amenities including a soccer field, restroom facilities, amphitheater, two parking lots, playground and open space.
- An 18-hole golf course borders the duck pond property to the east. The project will enhance park user's safety and overall experience.



## Project Funding

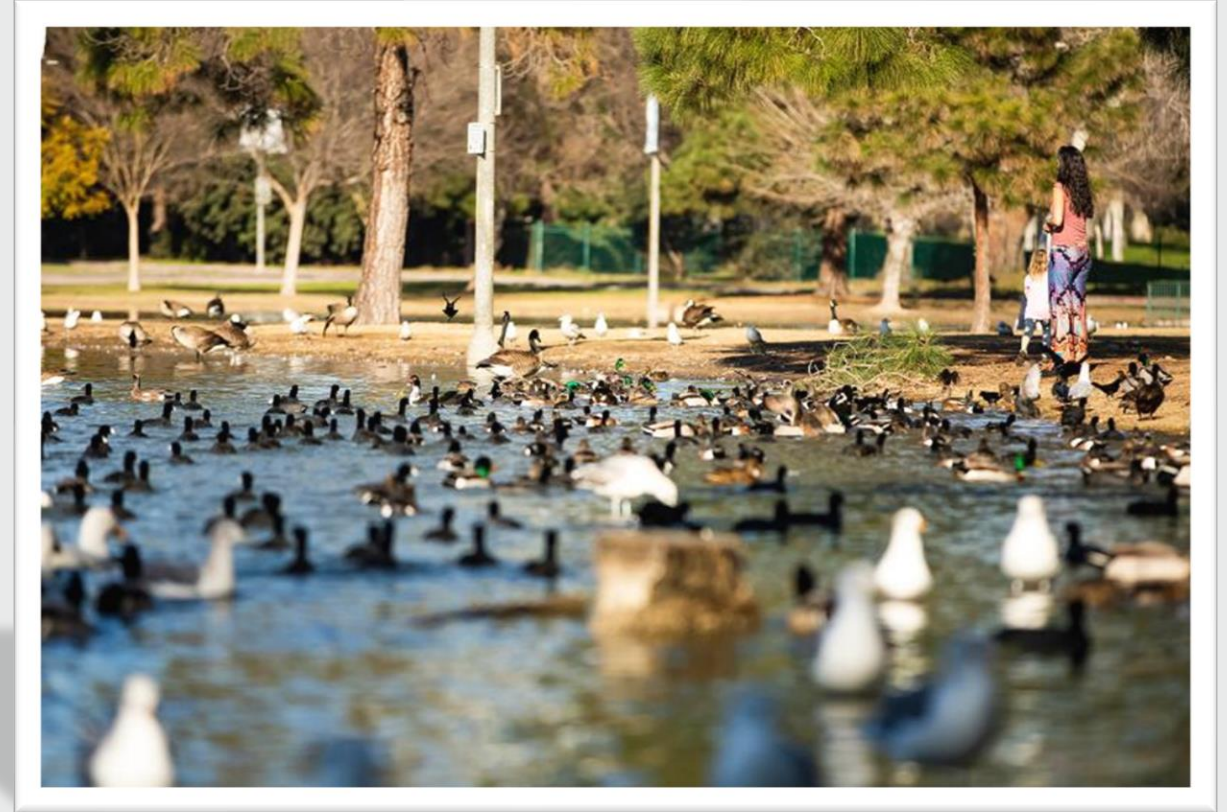
Project cost is **\$9 million**:

- General Capital fund
- Grant Funding
- Measure A
- Measure W
- Water Department

# El Dorado Duck Pond Project Update

## Project Objectives

- Be cost-effective
- Improve water quality
- Protect existing and future wildlife
- Upgrade path of travel and provide ADA accessibility



# Duck Pond Plan

Beginning  
Fall 2022

—  
Completion  
Winter 2023

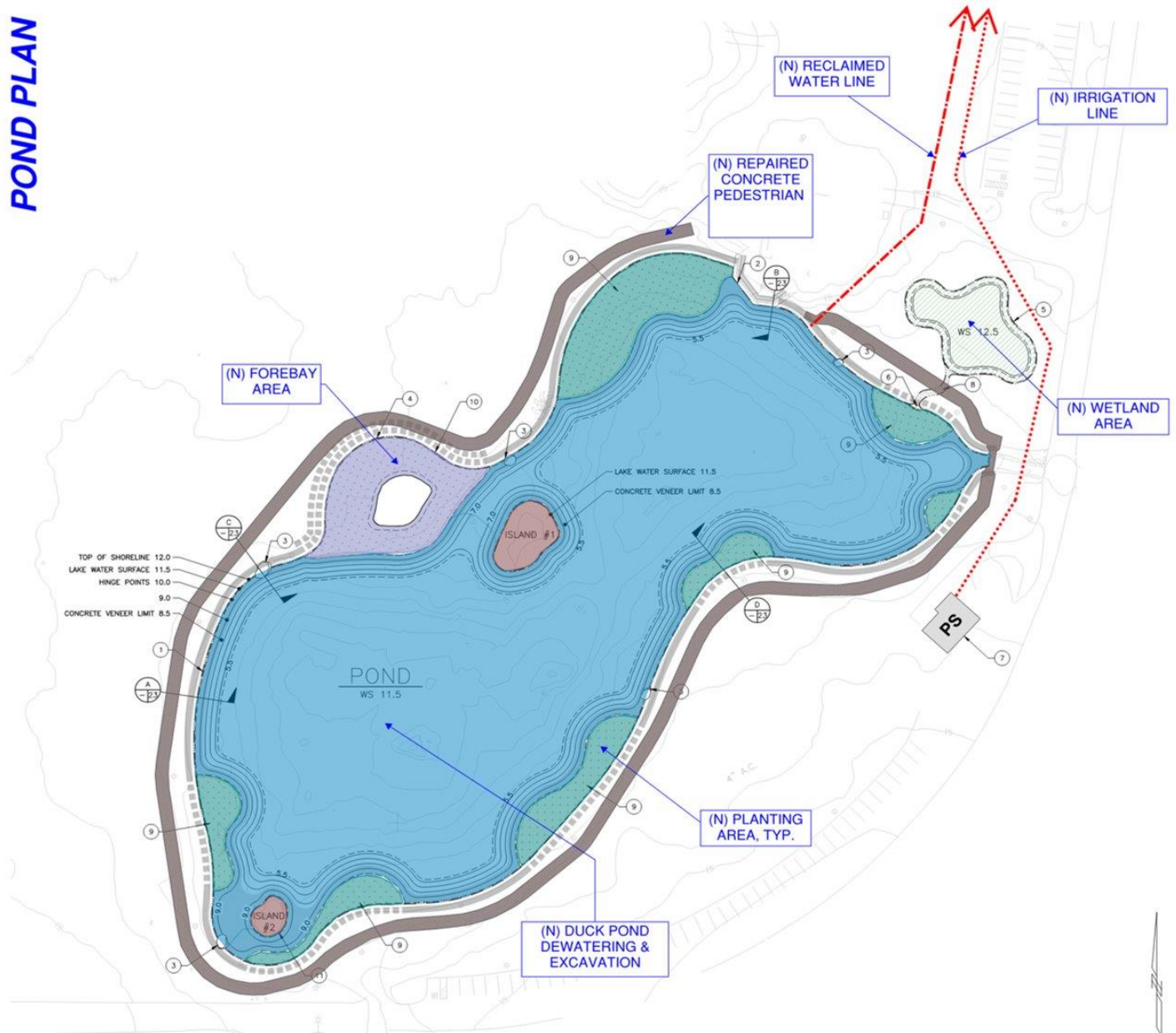
POND PLAN



POND PLAN  
SCALE: 1"=40'

1  
9, 10, 12/22

# POND PLAN



# Construction Site Plan

Beginning  
Fall 2022

Completion  
Winter 2023



## Wildlife Protection

- All relocation procedures will follow the California Department of Fish and Wildlife (CDFW) requirements.
- Fish and turtles will be relocated to nearby existing bodies of water, including within El Dorado Park as well as the Nature Center.
- Fencing will be installed around the project site to induce waterfowl to leave the site. Feeding near the project site is strongly discouraged.

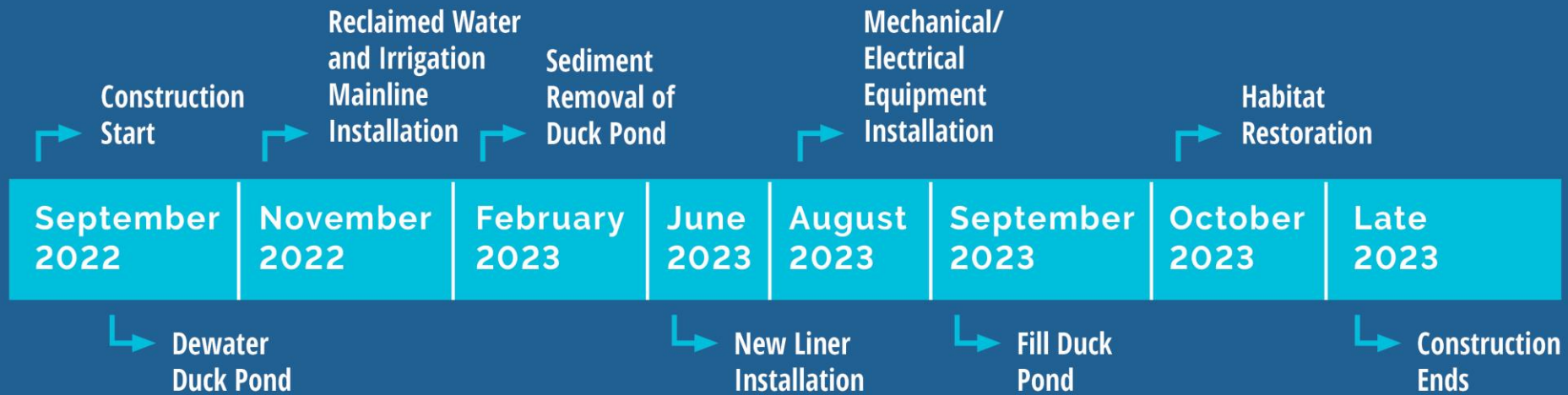
## Wildlife Protection Continued...

- Construction activity will start outside of the nesting season. A nesting bird management plan will be implemented throughout project construction. The overall project construction will benefit wildlife in the area.
- Throughout project construction a biological monitor will be on site to oversee construction activities.

# EL DORADO DUCK POND PROJECT

## ESTIMATED TIMELINE

[longbeach.gov/eldoduckpond](http://longbeach.gov/eldoduckpond)



*\*Construction timeline is set barring unforeseen weather changes or other circumstances.*

# Question & Answer



## Q&A Instructions

1. Questions by "raised hand" feature will be answered in the order they were received; written questions in chat box will be answered at the end of the Q&A.
2. Each participant will have 2-minutes maximum for comments.
3. Unanswered questions are encouraged to be sent to [contactlbpw@longbeach.gov](mailto:contactlbpw@longbeach.gov)

# El Dorado Duck Pond Project Update

## Stay Connected!

### Email:

[ContactLBPW@longbeach.gov](mailto:ContactLBPW@longbeach.gov)

### Project Web Page:

[longbeach.gov/pw/projects/el-dorado-duck-pond-project/](http://longbeach.gov/pw/projects/el-dorado-duck-pond-project/)

### Social Media:

@LBPublicWorks on Facebook, Twitter, and Instagram

A nighttime photograph of a city skyline reflected in water. The scene is illuminated by various city lights, including streetlights and building lights. The water in the foreground is dark, creating a clear reflection of the lights and buildings above. The sky is dark, and the overall atmosphere is vibrant and urban.

**Thank You!**