

Junipero Dog Beach

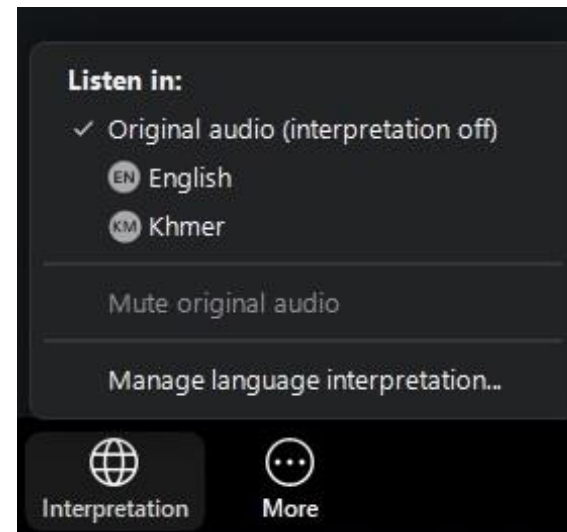
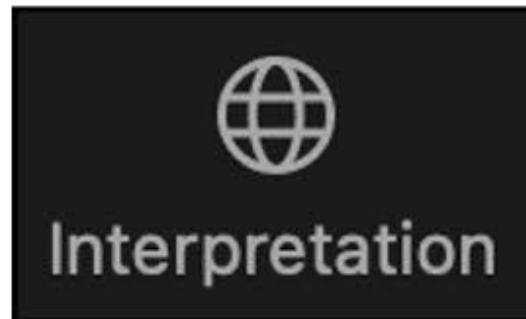
Virtual Community Meeting
Wednesday, February 11, 2026
6 – 7:30 p.m.



Language Interpretation



- Language interpretation can be accessed by clicking the globe “Interpretation” icon
- Select the language you would prefer



Zoom Meeting Logistics



- Participants will be muted during the presentation
- Please hold all project questions until the question-and-answer session at the end of the presentation
- The chat feature is limited communication with the panelist for technical support only. Do not use the chat feature for project questions.

Agenda



- Introductions
- Project Background
- Proposed Location and Concept
- Environmental Studies
- Rosie's Dog Beach Precedent
- Community Input and Next Steps
- Questions & Discussion

Project History



- On July 18, 2023, City Council requested Staff to report on potential sites in District 2 for a second dog beach to better serve residents of Long Beach.
- On March 8, 2024, Staff issued a Memo to the City Council identifying two possible locations for a second dog beach.
- After the release of this memo, City Staff received feedback from the public expressing concerns about the proposed locations as being already heavily used by families, visitors, and actively programmed.
- As part of the FY24 CIP, \$100K in Tidelands funding was authorized to support technical studies, permitting, and project delivery support.



Alamos Beach During Summer

Project Goals



- **Meet demand** to address community interest and demand for a second, off-leash dog beach play area/exercise zone.
- **Provide equitable distribution** of amenities and resources across the City's waterfront, allowing the public who live downtown, in adjacent neighborhoods, or in central Long Beach better access to similar resources.



Aerial photo of Rosie's Dog Beach

Project Precedents



A Proven Local Model: Rosie's Dog Beach

- Rosie's Dog beach was first established in 2003 and expanded in 2013.
- Designation and use was approved by the California Coastal Commission
- Four acres of coastal, unfenced dog play area
- Adjacent to parking lot for simpler maintenance and public access
- Successfully managed for over 20 years



Lifeguard Tower at Rosie's Dog Beach

Project Precedents



How Rosie's Dog Beach Protects the Environment

- Utilize creative signs and markers to define edges and boundaries
- Dog-waste bags and trash receptacles provided for pet owners
- Marine Bureau's routine cleaning, beach sanitization, and monitoring
- Support from Animal Care and Marine Safety for enforcement, as needed



Rosie's Dog Beach

Site Selection Parameters



- **Adjacent to Parking Lot** - For general maintenance and access, dog beach play zones/exercise areas are found to have been more successful when located near a parking lot.
- **Avoid heavily used areas and programming conflicts** - Avoid areas where families gather, including the Wibit water playground, sports courts, playgrounds, and popular beach gathering areas.
- **Contiguous space** - in order to remain comparability to Rosie's, prioritize areas with 4.0 acres of contagious, open beach space
- Based on these parameters, this eliminated Alamitos Beach and West Junipero Beach and resulted in the preferred East Junipero Beach location.



Aerial view of proposed Junipero Dog Beach location

Proposed Junipero Dog Beach



- Located east of Junipero Beach parking lot and east of a stormwater outfall
- Similar to Rosie's, the new Junipero Dog Beach will feature an off-leash, coastal dog play/exercise area approximately 4.0 acres in size
- Work will include installation educational and regulatory signage, and waste-bag dispensers and trash receptacles
- Management approach will be modeled after Rosie's Dog Beach, including its operating hours



Rosie's Dog Beach

Site Selection Parameters



Environmental Studies



What We Studied

- Coastal Commission will require biological studies to determine if the proposed work/improvements will generate impacts
- In 2024, the City engaged a local biologist to conduct these required studies. Work included literature research and in-field surveys, including:
 - Vegetation and eelgrass surveys
 - Bird surveys, including presence of special-status species
 - General wildlife observations



Rosie's Dog Beach

Environmental Findings and Results



The biological studies conducted in the survey area concluded:

- No native vegetation
- No eelgrass or surfgrass present
- No nesting habitat identified within proposed areas

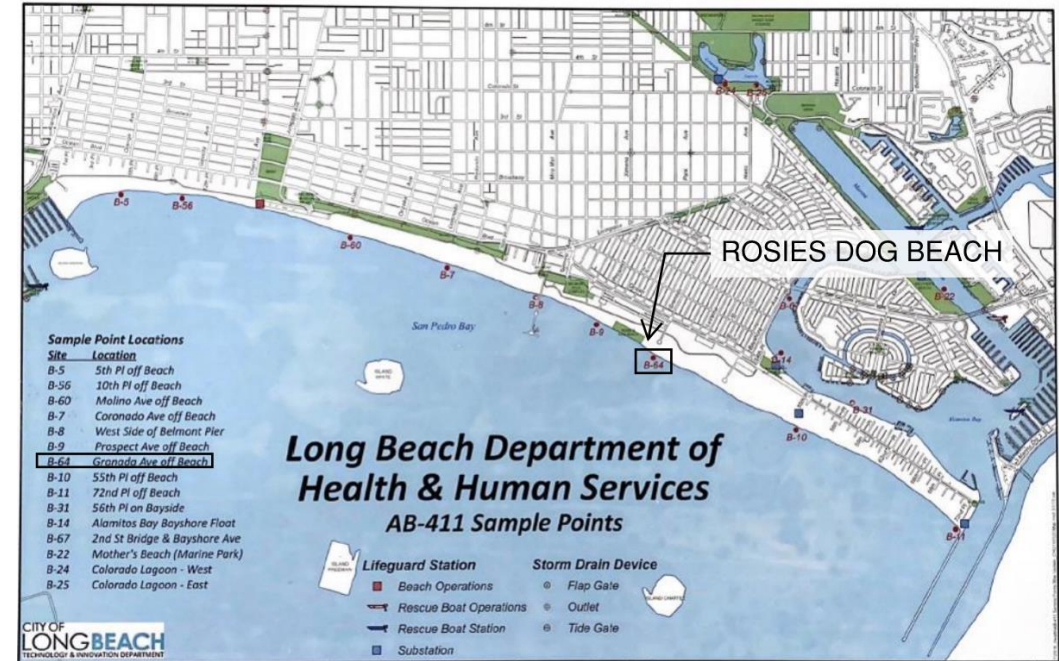


Rosie's Dog Beach

Water Quality Testing



- The City, through the Department of Public Health, conducts weekly water quality testing of recreational surface waters pursuant to AB-411.
- These results are used to inform the public of four possible watch conditions: open, advisory, rain advisory, or closed.
- For Rosie's Dog Beach, water quality tests are conducted at Granada Ave off Beach.
- For the proposed Junipero Dog Beach, water quality tests are already conducted at Molino Ave off Beach.



Water Quality Testing Locations

Operations and Maintenance



- Operations and maintenance would be performed by PRM's Marine Bureau, Beach Maintenance Division
- The Junipero Dog Beach maintenance program would mirror Rosie's Dog Beach, which includes:
 - Daily sand sifting and raking using mechanical equipment, up to 10 inches deep
 - Sand tilling and turnover to expose deeper sand layers to sunlight, supporting natural sanitization and bacteria reduction
 - Daily trash collection services and replenishment of dog waste bags and supplies on an as-needed basis



Beach Maintenance Equipment

Project Timeline (Next Steps)



- **Winter/Early 2026** – Community engagement and collection of feedback.
- **Spring 2026** – CEQA (environmental review) and Regulatory Permit application submittals
- **TBD** - Coastal Commission determination and hearing
- **TBD** - Municipal Code Amendments
- **TBD** – Implementation/Opening



Rosie's Dog Beach

Q&A Logistics



- Submit questions using the Q&A function
- Verbal questions may be asked by using the raise hand feature
- Verbal questions will be limited to 2 minutes
- Limit questions to one at a time
- Questions after the meeting can be emailed to TidelandsCIP@longbeach.gov with Junipero Dog Beach as the subject

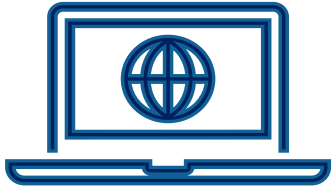


Stay Connected!



Email

TidelandsCIP@longbeach.gov



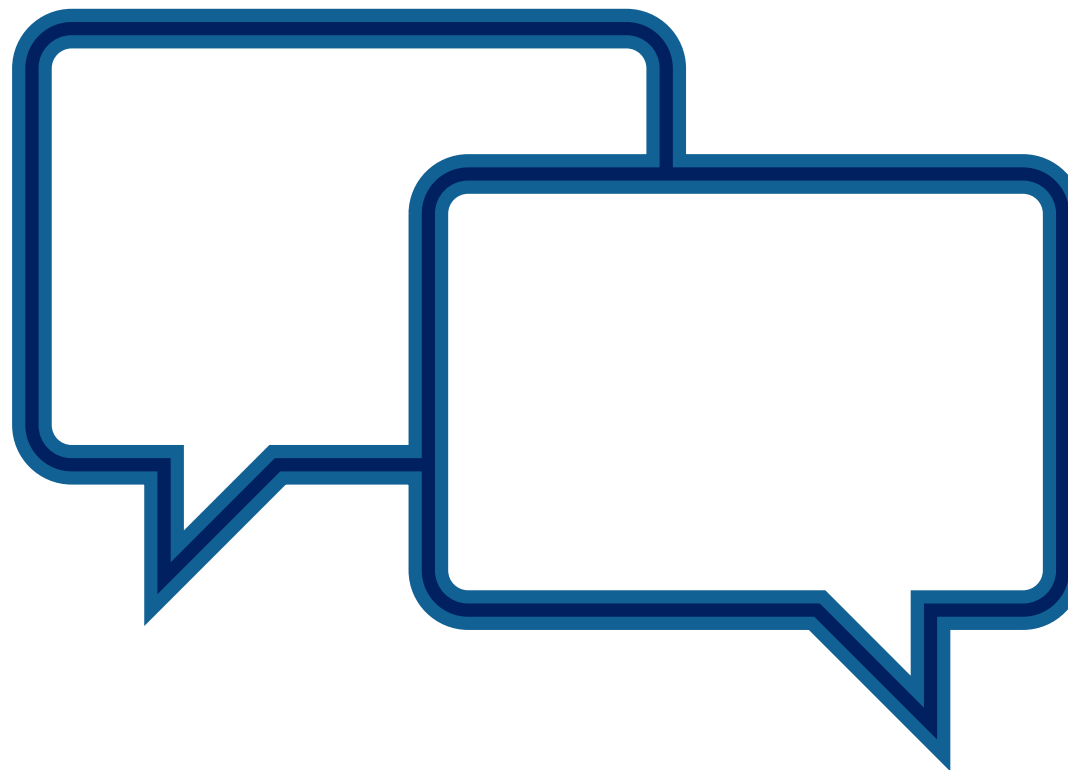
Project webpage

lbcity.info/JuniperoDogBeach



@LBPublicWorks

Q&A



Thank You!



longbeach.gov/pw