

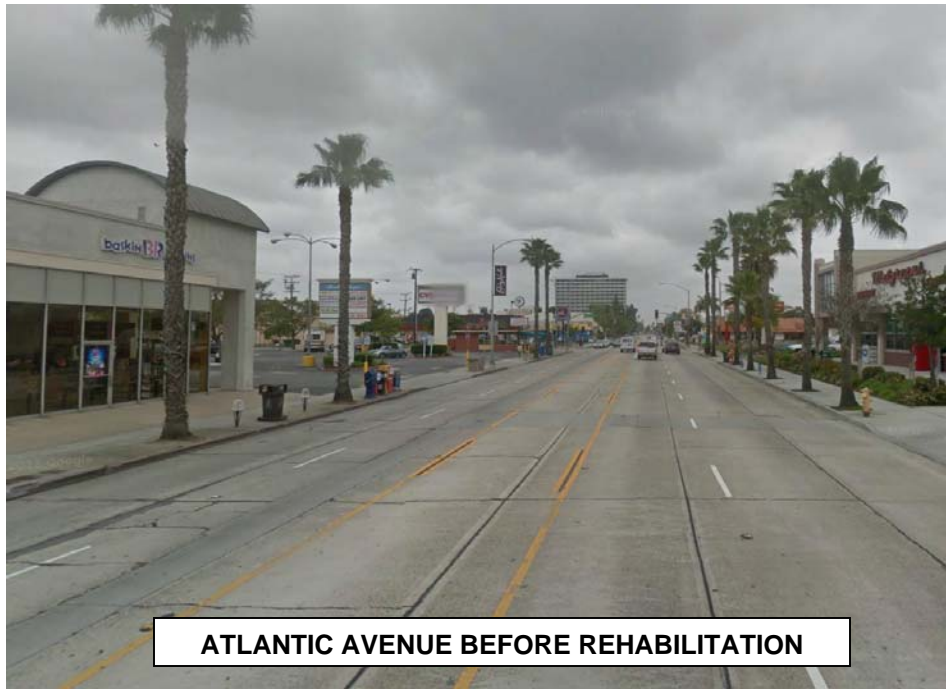


PROJECT SUMMARY:

The City of Long Beach in association with CalRecycle has completed the rehabilitation work on six street projects which included **17,424.35** tons of rubberized asphalt concrete (RAC). Generally, roadway rehabilitation consisted of a minimum two-inch resurfacing which contains crumb rubber derived from scrap tires. A total of **40,656** waste tires were diverted that otherwise would have end up in a landfill.

PROJECT NAME	FROM	TO	LENGTH (miles)	RAC (tons)	Number of PTE's diverted
ATHERTON STREET	<i>Bellflower Blvd.</i>	<i>Palo Verde Ave.</i>	<i>0.93 miles</i>	2,114.14	5,003
ATLANTIC AVENUE	<i>33rd Street</i>	<i>Bixby Road</i>	<i>0.66 miles</i>	4,806.11	11,214
CARSON STREET	<i>Atlantic Ave.</i>	<i>Orange Ave.</i>	<i>1.01 miles</i>	2,340.56	5,462
WOODRUFF AVENUE	<i>Willow St.</i>	<i>Spring St.</i>	<i>0.48 miles</i>	2,334.29	5,446
WOODRUFF AVENUE	<i>Conant St.</i>	<i>Carson St.</i>	<i>0.52 miles</i>	2,609.80	6,090
STEARNS STREET	<i>Bellflower Blvd.</i>	<i>Palo Verde Ave.</i>	<i>0.77 miles</i>	3,189.45	7,441

Total 4.37 miles 17,424.35 tons 40,656 PTE's



ATLANTIC AVENUE BEFORE REHABILITATION



ATLANTIC AVENUE AFTER REHABILITATION



CARSON STREET AFTER REHABILITATION



WOODRUFF AVENUE BEFORE REHABILITATION



WOODRUFF AVENUE AFTER REHABILITATION



WOODRUFF AVENUE AFTER REHABILITATION



STEARNS STREET BEFORE REHABILITATION



STEARNS STREET AFTER REHABILITATION