

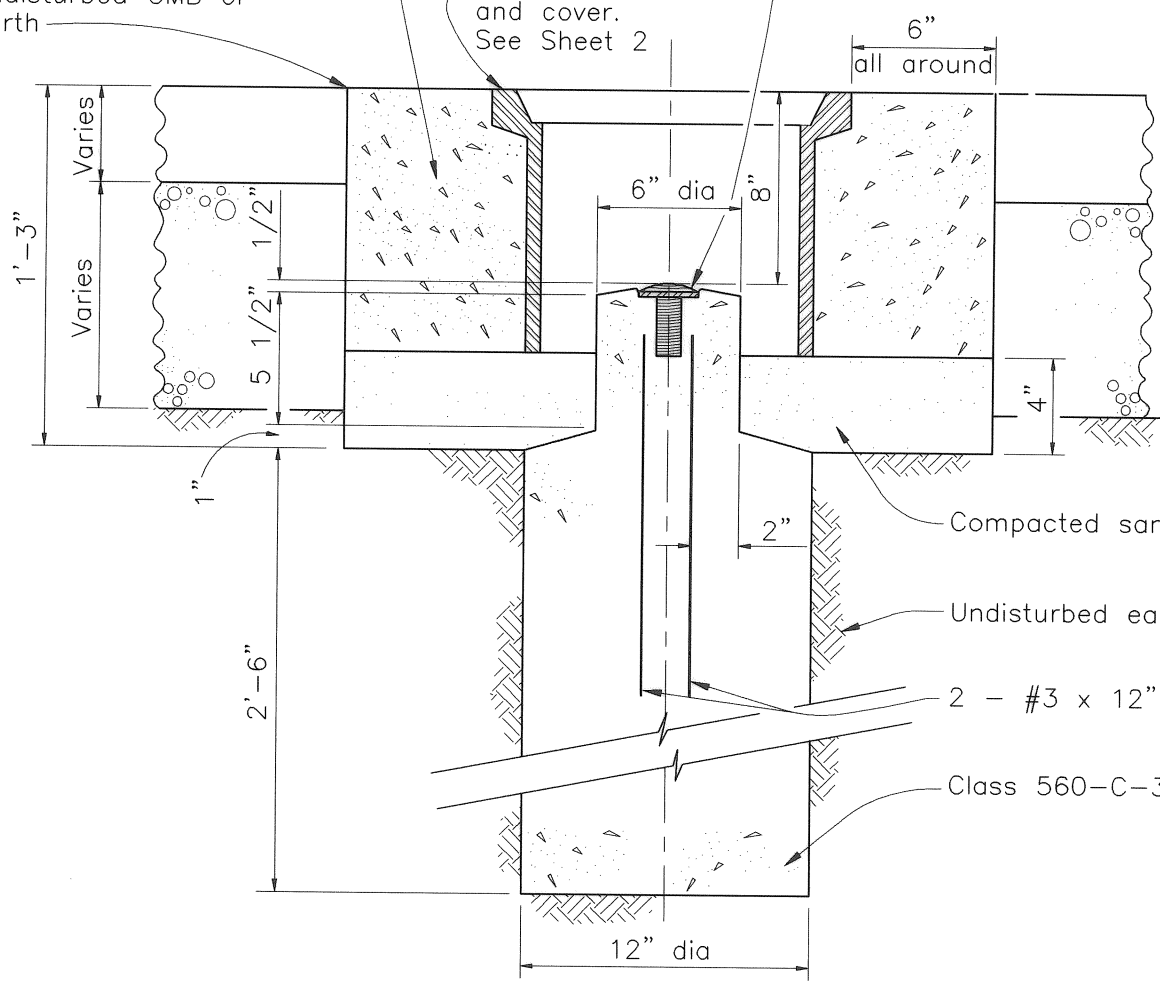
PLAN

Class 560-C-3250 PCC

Pavement shall be cut to neat lines and concrete placed against undisturbed CMB or earth

Brass cap shall be furnished and installed by the Contractor. Domed brass cap shall be 2 1/2" dia with 3/4" x 2 1/2" shank or approved equal. Center within 1/4".

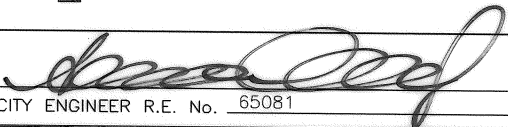
11" cast iron frame and cover. See Sheet 2

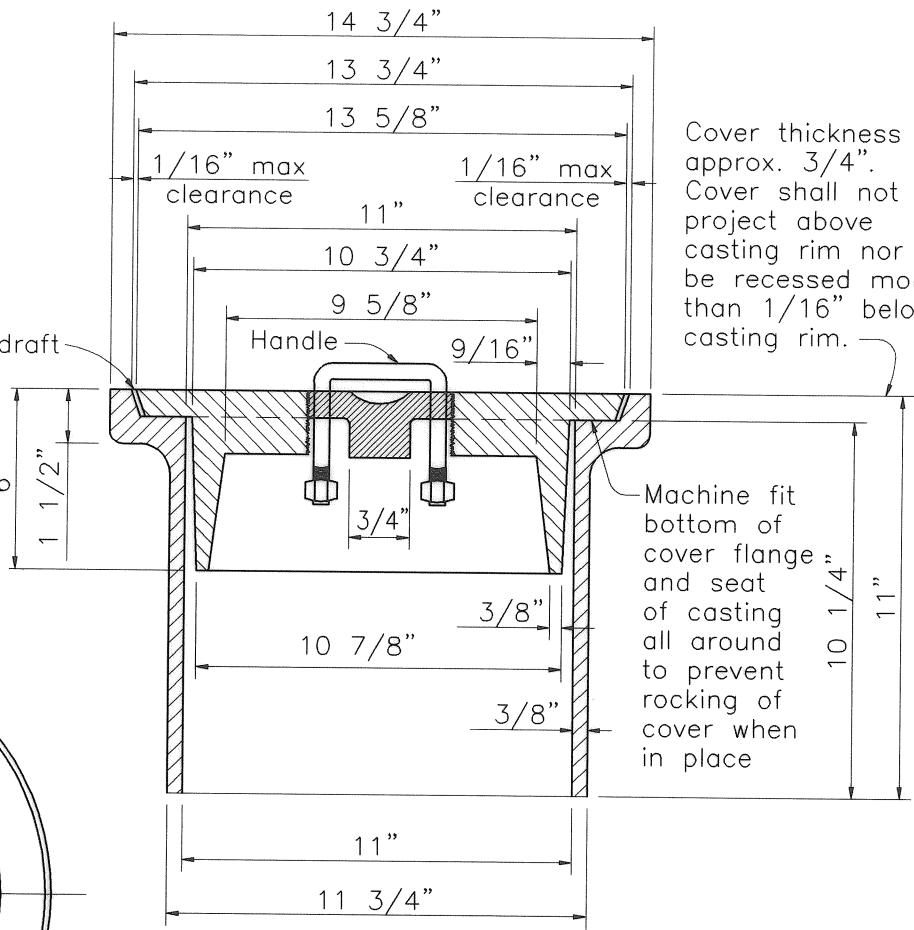
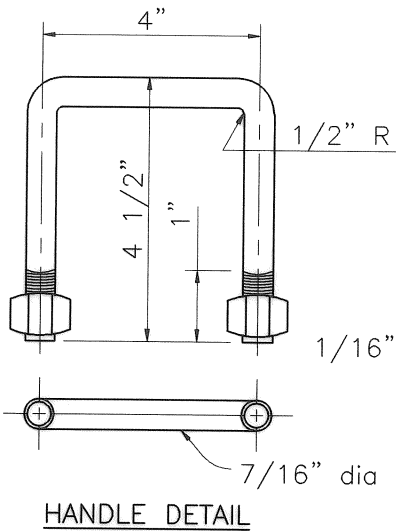


SECTION A-A

NOTE:  
1. Brass Cap shall be submitted to the Survey Section for stamping prior to setting.

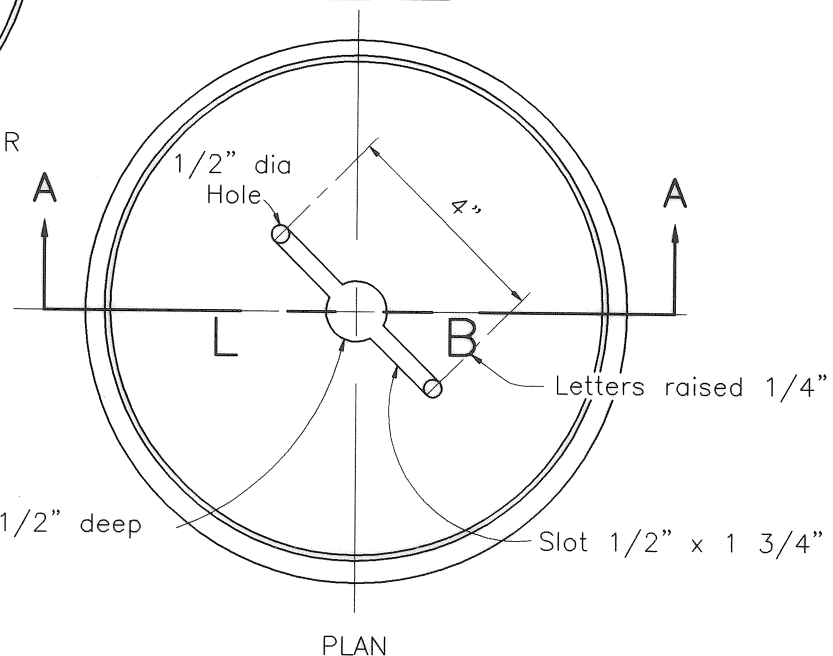
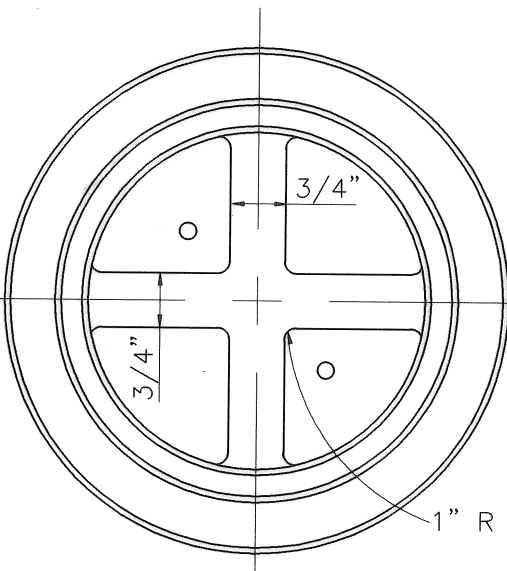
SAVED PATH: R:\Standard Plans\CLBSTD\_2017\CLB--STD PLAN--2017 MULTI-LAYOUT

|                                     |      |   |                      |
|-------------------------------------|------|---|----------------------|
| 4                                   |      | CITY OF LONG BEACH, DEPARTMENT OF PUBLIC WORKS<br>2017 STANDARD PLANS                             | STANDARD<br>PLAN NO. |
| 3                                   |      |   |                      |
| 2                                   |      |   |                      |
| 1                                   |      |   |                      |
| TYPE C $\phi$ INTERSECTION MONUMENT |      |   | 202                  |
| NO.                                 | DATE | APPROVED BY:  | SHEET                |
| REVISIONS                           |      | CITY ENGINEER R.E. No. 65081  | 1 OF 3               |
|                                     |      | DATE: 11/13/17  |                      |



Cover thickness approx. 3/4". Cover shall not project above casting rim nor be recessed more than 1/16" below casting rim.

Machine fit bottom of cover flange and seat of casting all around to prevent rocking of cover when in place



Finger Hole 1 3/4" dia x 1/2" deep

Letters raised 1/4"

Slot 1/2" x 1 3/4"

CAST IRON FRAME DETAILS

SAVED PATH: R:\Standard Plans\CLBSTD\_2017\CLB-STD\_PLAN-2017\_MULTI-LAYOUT

|           |      |
|-----------|------|
| 4         |      |
| 3         |      |
| 2         |      |
| 1         |      |
| NO.       | DATE |
| REVISIONS |      |

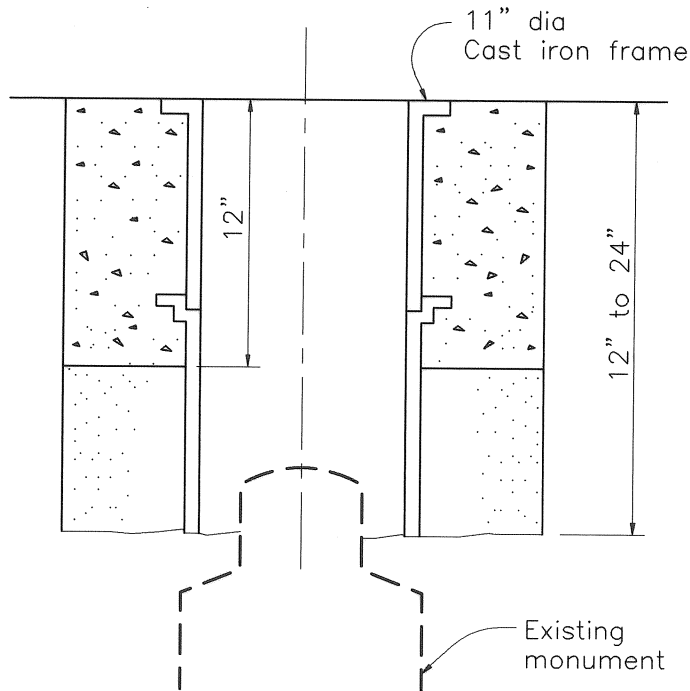
CITY OF LONG BEACH, DEPARTMENT OF PUBLIC WORKS  
2017 STANDARD PLANS

TYPE C  $\text{\textcircled{C}}$  INTERSECTION MONUMENT

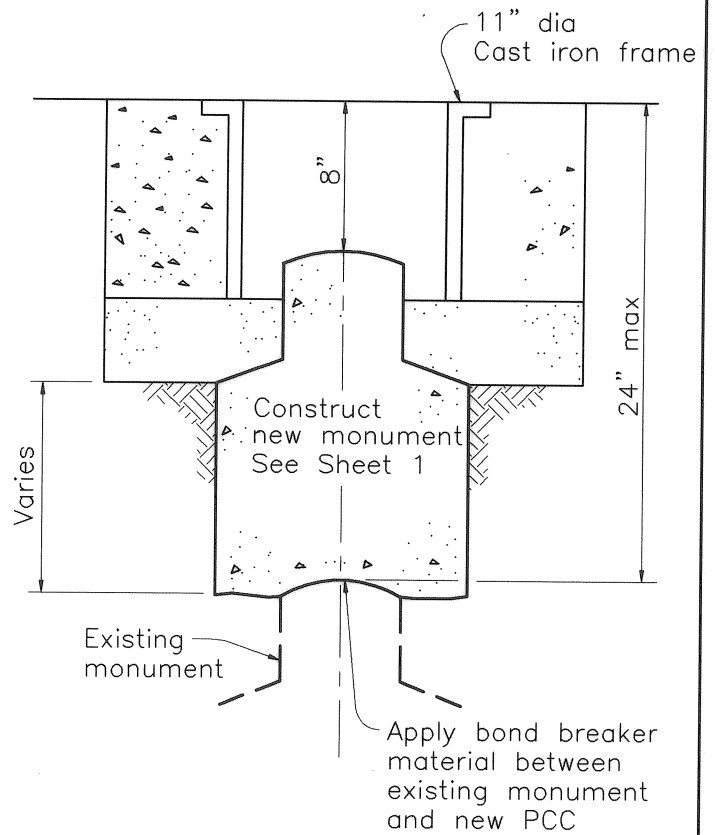
APPROVED BY: *[Signature]* DATE: 11/13/17  
CITY ENGINEER R.E. No. 65081

STANDARD PLAN NO.  
202

SHEET  
2 OF 3



CASE 1



CASE 2

ADJUSTMENT OF EXISTING TYPE C  
 ☉ INTERSECTION MONUMENT

NOTES:

1. See Sheet 1 for additional Notes and Details.
2. Bond breaker material shall be approved by City Engineer.

SAVED PATH: R:\Standard Plans\CLBSTD\_2017\CLB-STD\_PLAN-2017 MULTI-LAYOUT

|                                |      |   |                      |
|--------------------------------|------|---|----------------------|
| 4                              |      | CITY OF LONG BEACH, DEPARTMENT OF PUBLIC WORKS<br>2017 STANDARD PLANS | STANDARD<br>PLAN NO. |
| 3                              |      |   |                      |
| 2                              |      |   |                      |
| 1                              |      |   |                      |
| TYPE C ☉ INTERSECTION MONUMENT |      |   | 202                  |
| NO.                            | DATE | APPROVED BY: <i>[Signature]</i>                                       | DATE: 11/13/17       |
| REVISIONS                      |      | CITY ENGINEER R.E. No. 65081  | SHEET<br>3 OF 3      |